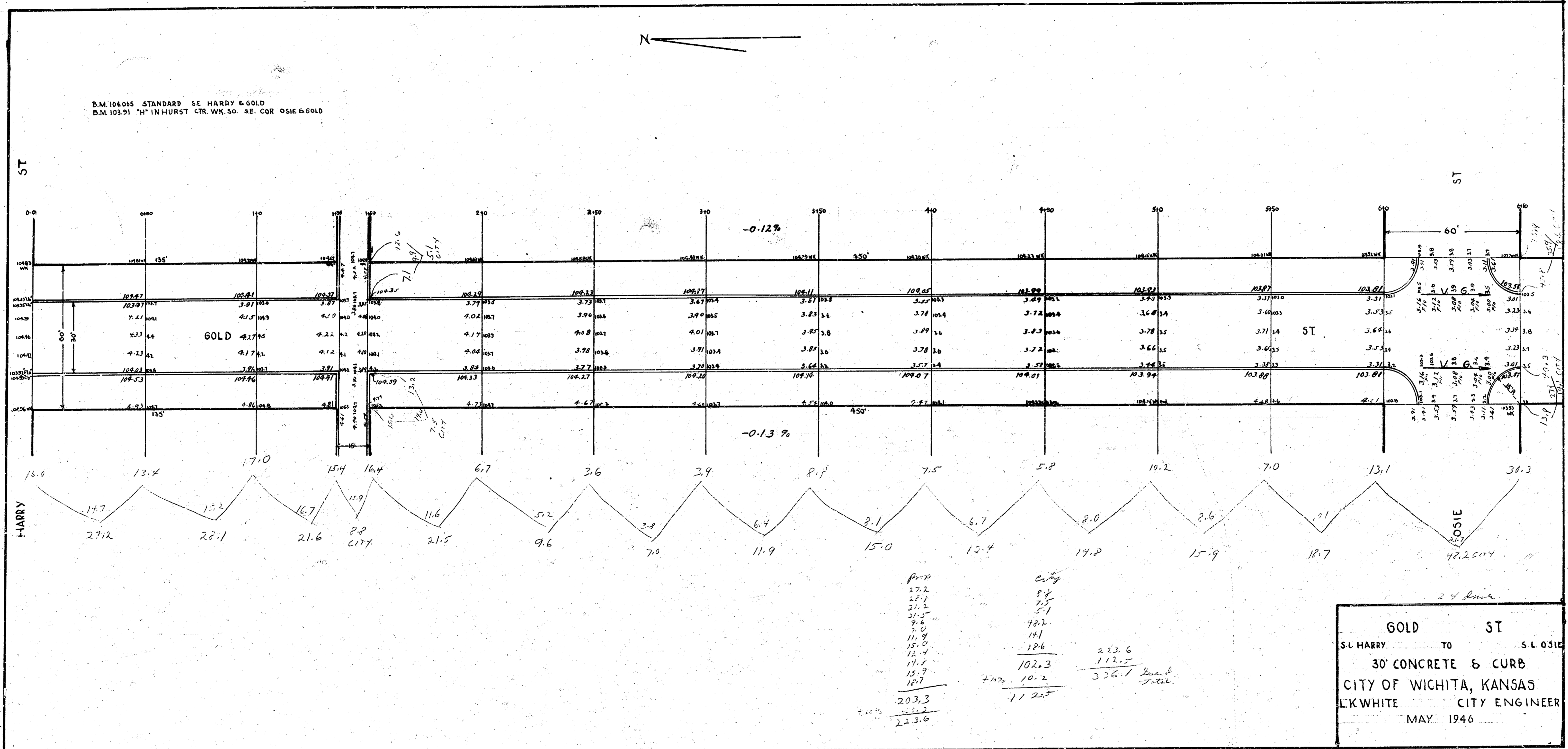
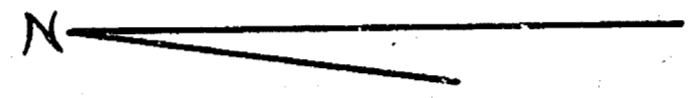


D.M. 10405 STANDARD SE HARRY & GOLD
 B.M. 10391 "N" IN HURST CTR. W.K. SO. SE. COR OSIE & GOLD



ST
 HARRY

ST

GOLD

ST

GOLD ST
 S.E. HARRY TO S.E. OSIE
 30' CONCRETE & CURB
 CITY OF WICHITA, KANSAS
 L.K. WHITE CITY ENGINEER
 MAY 1946

| | |
|---|---|
| 203.3 102.3 10.2 112.5 223.6 326.7 112.5 223.6 326.7 112.5 223.6 326.7 | 203.3 102.3 10.2 112.5 223.6 326.7 112.5 223.6 326.7 112.5 223.6 326.7 |
|---|---|

433 12