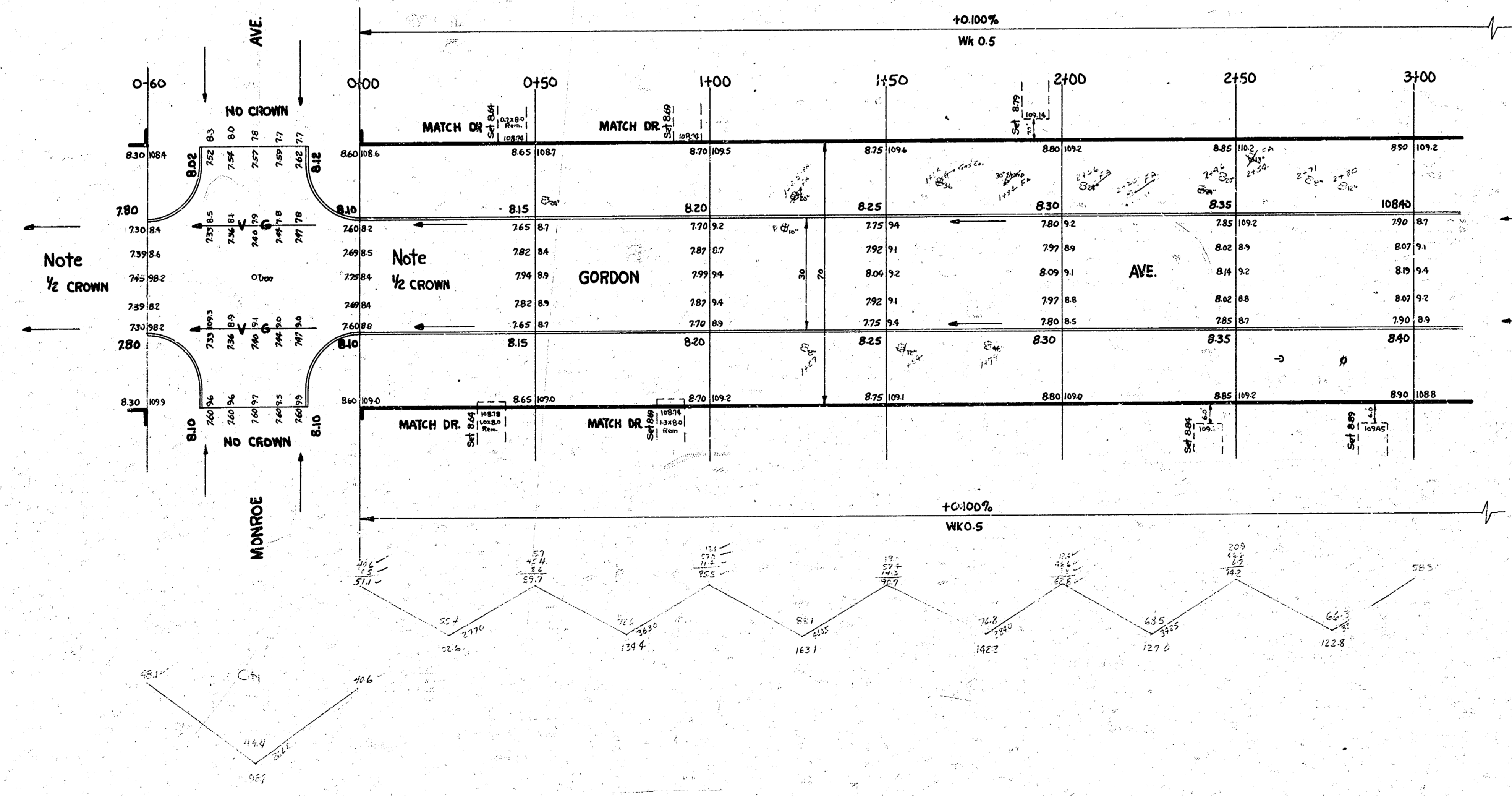
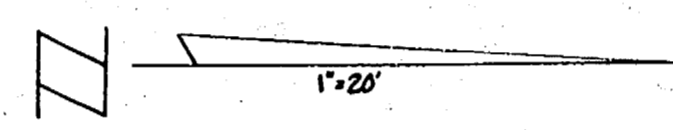


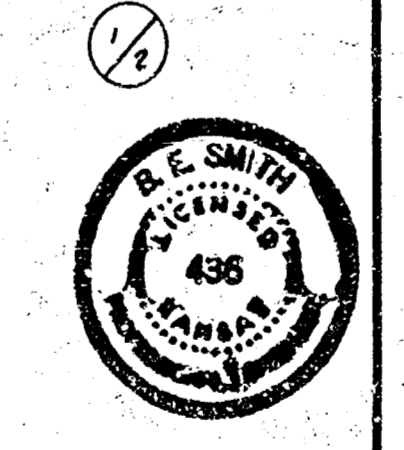
Sta On ϵ
 B.M. 108.01 "G" in Globe E. End Radius, S.E. Cor. Edwards & Monroe.
 B.M. 107.55 R.R. Spike, So. Side Guy Pole S.W. Cor. Gordon & Walker

EXCAV	600P
CITY	392
12-17	250
11-12-77	12,517.47
11-12-77	12,512
5710.00	12,515.00

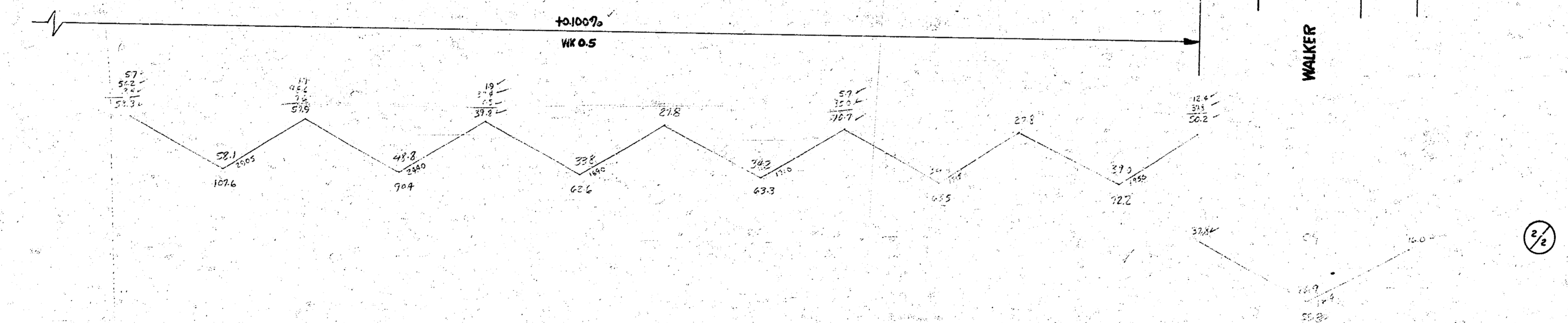
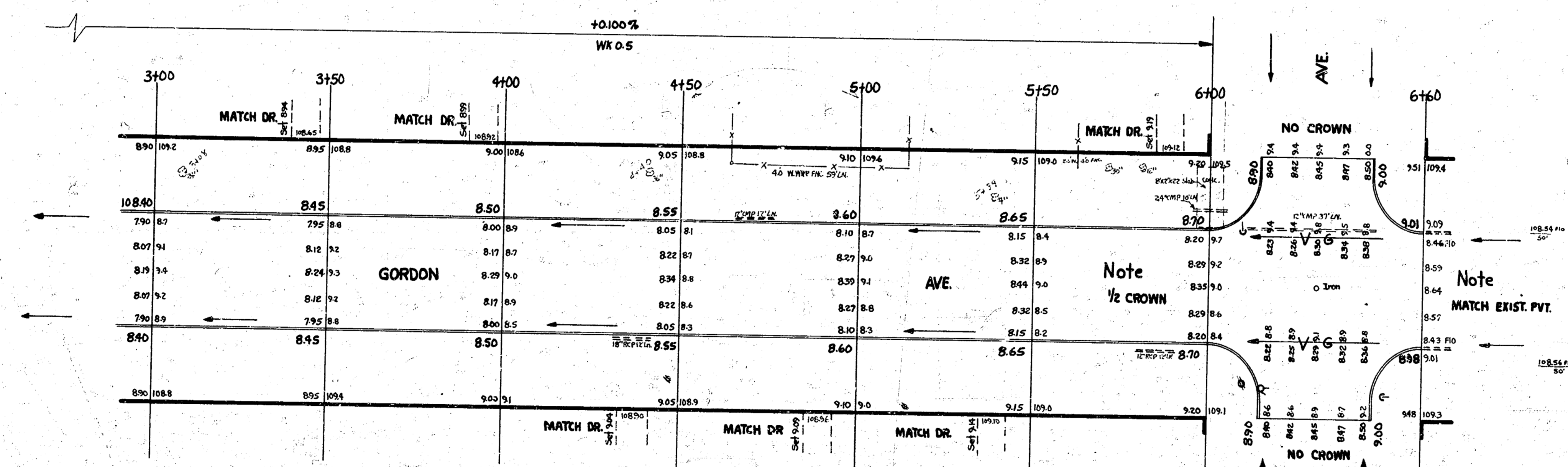
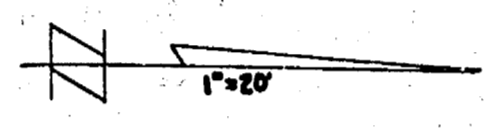


11/17/1955
 B.E. SMITH
 436
 11/17/1955

GORDON AVE.
 S.L. Monroe Ave To N.L. Walker
 30' Conc. 4 Cb.
 CITY OF WICHITA, KANSAS
 B.E. Smith City Engineer
 SEPT. 1955 Proj. No. C 15-177



CH1 PERS. Prop
USE CY 4504.77



GORDON AVE.
Proj. No. C 15-177