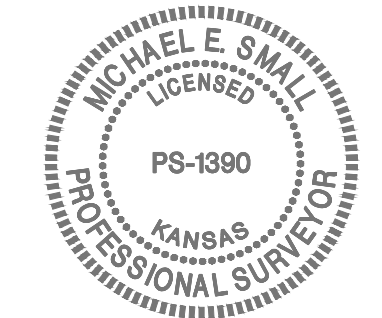
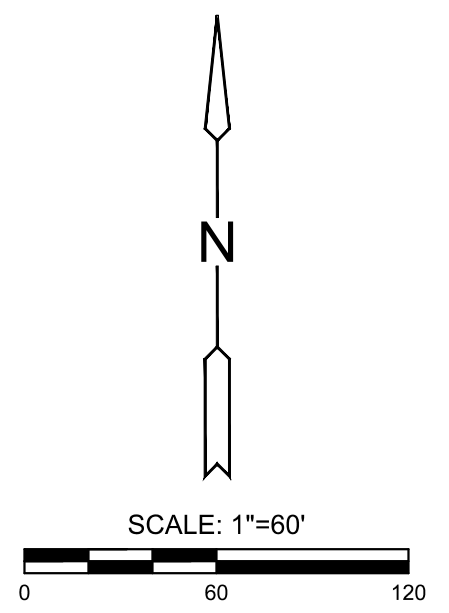
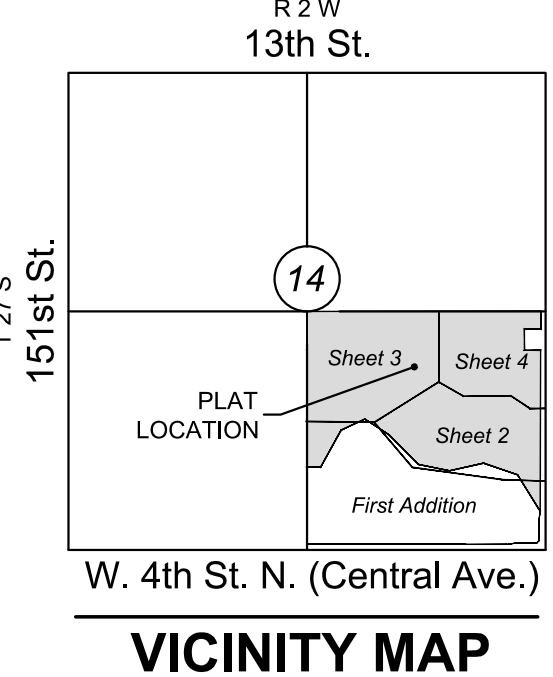


# FINAL PLAT COURTYARDS AT JACOBS FARM SECOND ADDITION

AN ADDITION TO WICHITA,  
SEDGWICK COUNTY, KANSAS



Basis of Bearings: Kansas coordinate system of 1983 south zone bearing of S88°57'26"W on the south line of Southeast Quarter, Section 14, Township 27 South, Range 2 West of the Sixth Principal Meridian, Sedgwick County, Kansas. This plat is surveyed and platted on NAD83 using Kansas state plane south zone coordinates, modified to the surface, having a combined adjustment scale factor of 1.000120014401728

### LEGEND

- Date of Survey: June 2022
- △ = Section Corner Monument Found
  - = Found  $\frac{5}{8}$ " rebar w/ MKEC CLS 39 id. cap
  - = Set  $\frac{3}{8}$ " rebar w/ MKEC CLS 39 id. cap
  - ⊕ = Benchmark
  - (M) = Measured
  - (D) = Described
  - (P) = Platted
  - (CM) = Calculated from Measurement
  - (CD) = Calculated from Described
  - Dmg. = Drainage
  - Util. = Utility
  - Esmt. = Easement
  - U.E. = Utility Easement
  - D.&U.E. = Drainage and Utility Easement
  - ① = Lot
  - ⑦ = Block

MINIMUM PAD ELEVATIONS LOWEST OPENINGS		
LOT(S) inclusive	BLOCK	ELEVATION NAVD 88
89-90	6	1363.6
91	6	1363.4
92	6	1363.1
93	6	1361.8
94	6	1361.5
95	6	1361.0
96	6	1360.7
97	6	1360.1
98	6	1359.8
99-104	6	1358.5

### BENCHMARKS

- BM#1 Nail in top of curb, south side of Lost Creek Road near northwest corner of inlet, 56 feet west and 145 feet north of Northeast Corner of SE  $\frac{1}{4}$ , Sec. 14, T27S, R2W Elev.=1351.54 NAVD88 (offsite)
- BM#2 Nail in northeast corner of traffic signal, northwest corner of Central and 13th Street, 77 feet west and 36 feet north of Southeast Corner of SE  $\frac{1}{4}$ , Sec. 14, T27S, R2W Elev.=1349.14 NAVD88 (offsite)

