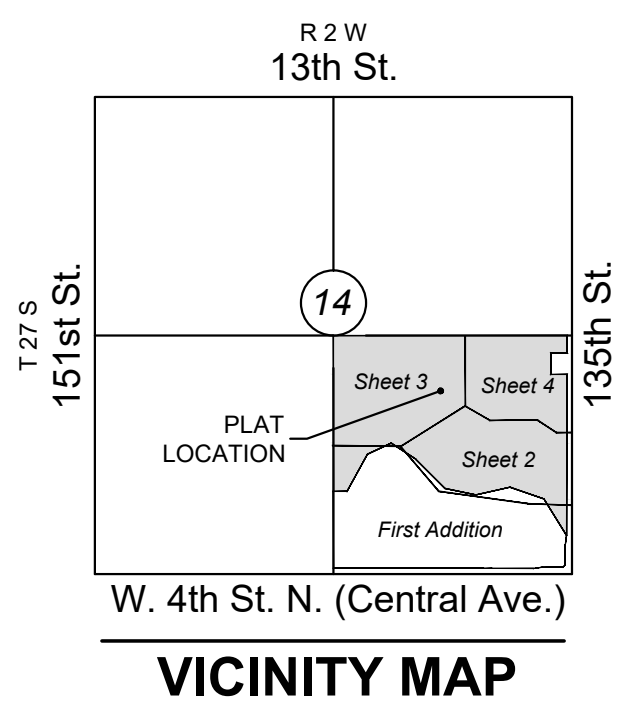


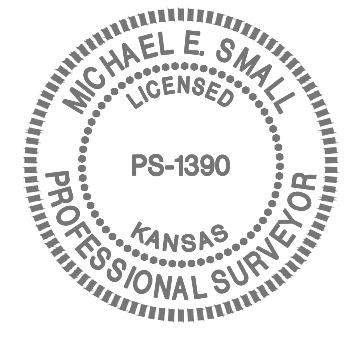
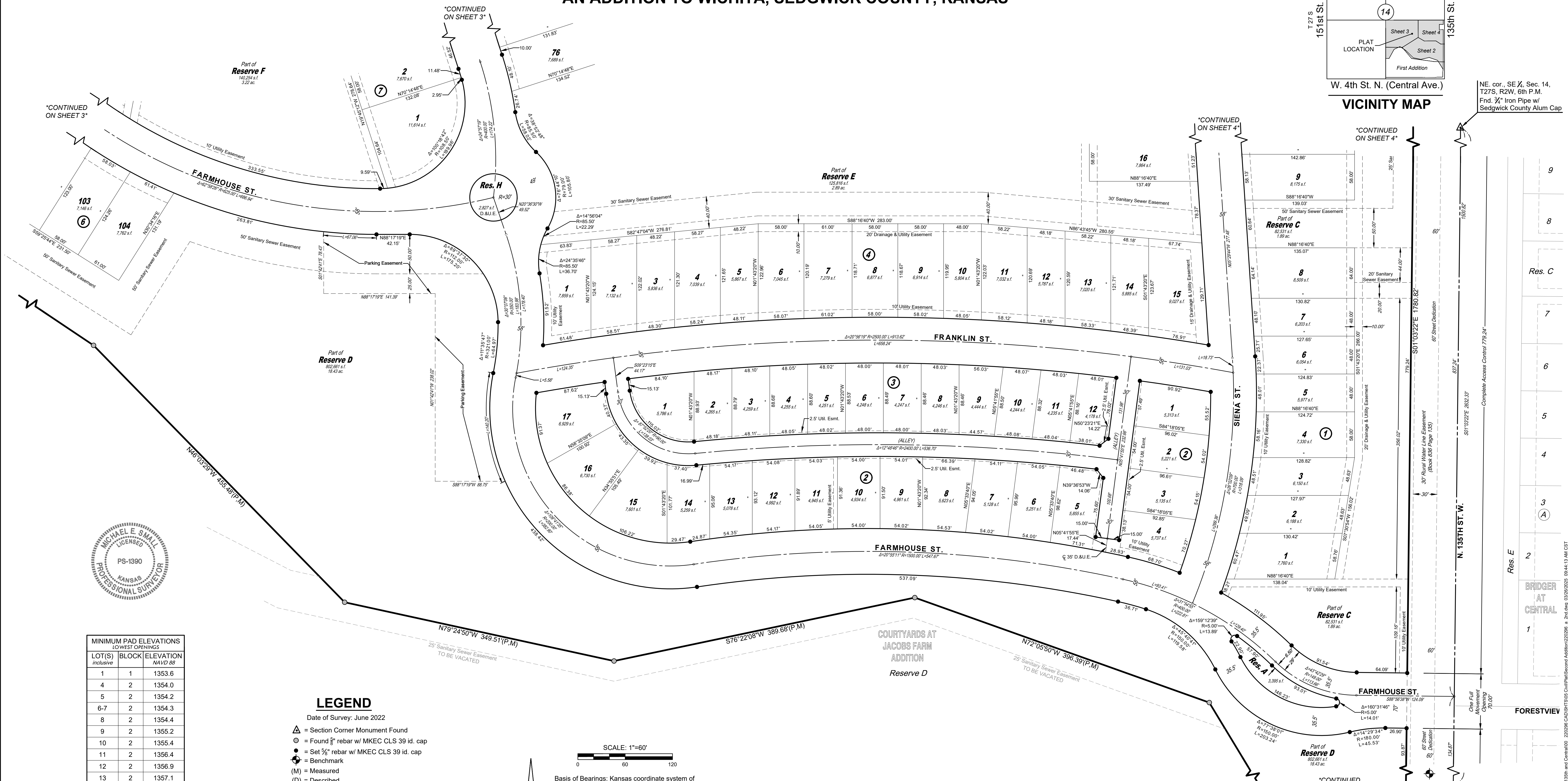
FINAL PLAT

COURTYARDS AT JACOBS FARM SECOND ADDITION

AN ADDITION TO WICHITA, SEDGWICK COUNTY, KANSAS



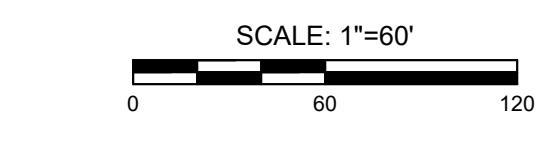
NE. cor., SE 1/4, Sec. 14, T27S, R2W, 6th P.M.
Fnd. 3/4" Iron Pipe w/ Sedgwick County Alum Cap



LOT(S) Inclusive	BLOCK	ELEVATION NAVD 88
1	1	1353.6
4	2	1354.0
5	2	1354.2
6-7	2	1354.3
8	2	1354.4
9	2	1355.2
10	2	1355.4
11	2	1356.4
12	2	1356.9
13	2	1357.1
14	2	1357.3
15-16	2	1357.7
103-104	6	1358.5

Reserve D (between Lot 17, Block 2 and Lot 104, Block 6)	ELEVATION NAVD 88
	1359.0

- ### LEGEND
- Date of Survey: June 2022
- △ = Section Corner Monument Found
 - ⊙ = Found 3/8" rebar w/ MKEC CLS 39 id. cap
 - = Set 3/8" rebar w/ MKEC CLS 39 id. cap
 - ⊕ = Benchmark
 - (M) = Measured
 - (D) = Described
 - (P) = Platted
 - (CM) = Calculated from Measurement
 - (CD) = Calculated from Described
 - Drng. = Drainage
 - Util. = Utility
 - Esmt. = Easement
 - U.E. = Utility Easement
 - D.&U.E. = Drainage and Utility Easement
 - 1 = Lot
 - ① = Block



Basis of Bearings: Kansas coordinate system of 1983 south zone bearing of S88°57'26"W on the south line of Southeast Quarter, Section 14, Township 27 South, Range 2 West of the Sixth Principal Meridian, Sedgwick County, Kansas. This plat is surveyed and platted on NAD83 using Kansas state plane south zone coordinates, modified to the surface, having a combined adjustment scale factor of 1.000120014401728

- ### BENCHMARKS
- BM#1 Nail in top of curb, south side of Lost Creek Road near northwest corner of inlet, 56 feet west and 145 feet north of Northeast Corner of SE 1/4, Sec. 14, T27S, R2W Elev.=1351.54 NAVD88 (offsite)
 - BM#2 Nail in northeast corner of traffic signal, northwest corner of Central and 135th Street, 77 feet west and 36 feet north of Southeast Corner of SE 1/4, Sec. 14, T27S, R2W Elev.=1349.14 NAVD88 (offsite)

