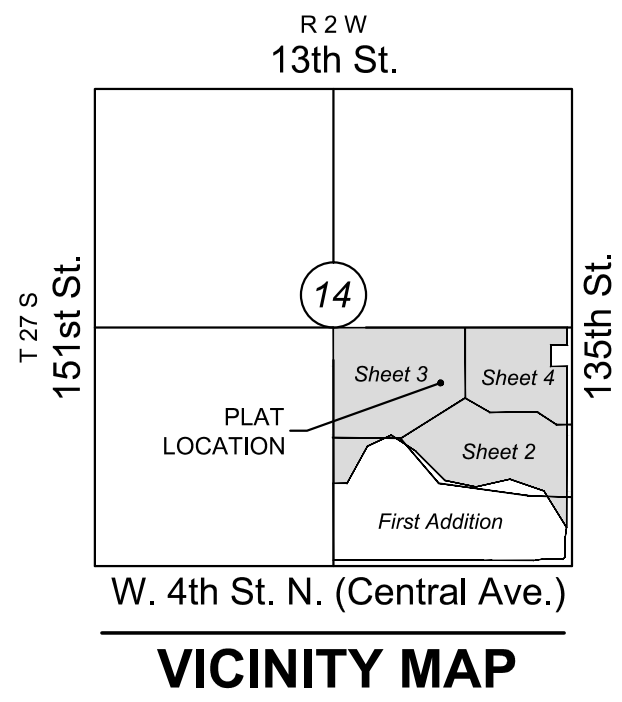


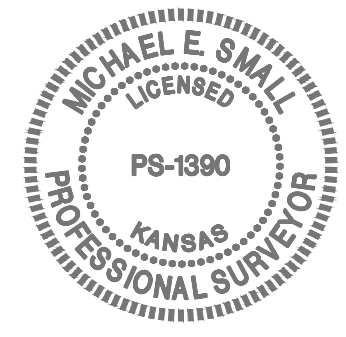
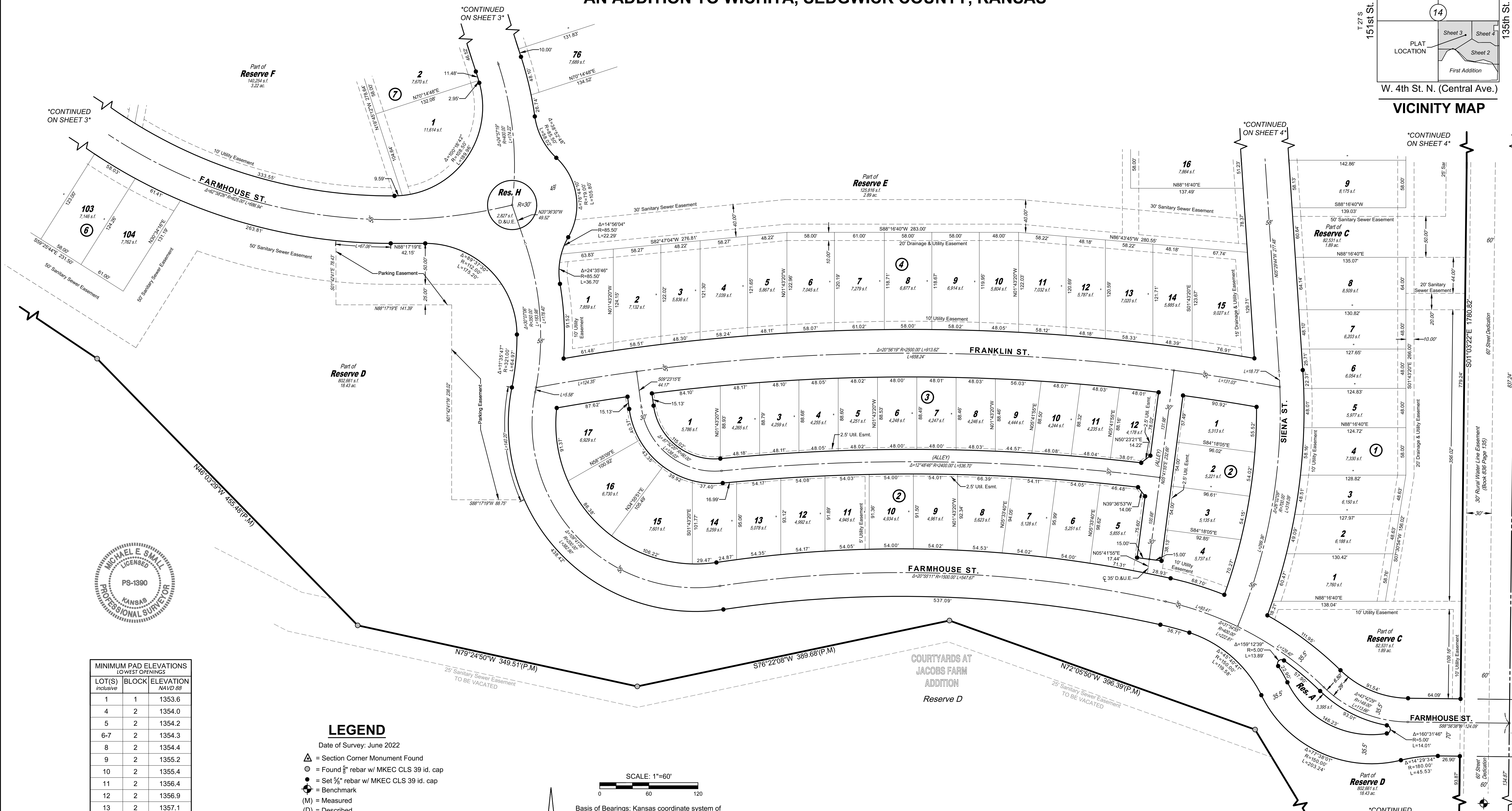
# FINAL PLAT

## COURTYARDS AT JACOBS FARM SECOND ADDITION

AN ADDITION TO WICHITA, SEDGWICK COUNTY, KANSAS

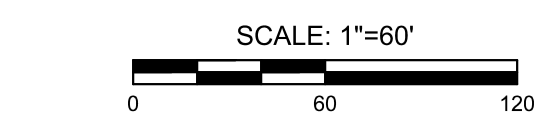


NE. cor., SE ¼, Sec. 14, T27S, R2W, 6th P.M.  
Fnd. ½" Iron Pipe w/ Sedgwick County Alum Cap



MINIMUM PAD ELEVATIONS LOWEST OPENINGS NAVD 88		
LOT(S) Inclusive	BLOCK	ELEVATION
1	1	1353.6
4	2	1354.0
5	2	1354.2
6-7	2	1354.3
8	2	1354.4
9	2	1355.2
10	2	1355.4
11	2	1356.4
12	2	1356.9
13	2	1357.1
14	2	1357.3
15-16	2	1357.7
103-104	6	1358.5
Reserve D (between Lot 17, Block 2 and Lot 104, Block 6)		1359.0

- ### LEGEND
- Date of Survey: June 2022
- △ = Section Corner Monument Found
  - ⊙ = Found 3/8" rebar w/ MKEC CLS 39 id. cap
  - = Set 3/8" rebar w/ MKEC CLS 39 id. cap
  - ⊕ = Benchmark
  - (M) = Measured
  - (D) = Described
  - (P) = Platted
  - (CM) = Calculated from Measurement
  - (CD) = Calculated from Described
  - Drng. = Drainage
  - Util. = Utility
  - Esmt. = Easement
  - U.E. = Utility Easement
  - D.&U.E. = Drainage and Utility Easement
  - ① = Lot
  - ⑦ = Block



Basis of Bearings: Kansas coordinate system of 1983 south zone bearing of S88°57'26"W on the south line of Southeast Quarter, Section 14, Township 27 South, Range 2 West of the Sixth Principal Meridian, Sedgwick County, Kansas.  
This plat is surveyed and platted on NAD83 using Kansas state plane south zone coordinates, modified to the surface, having a combined adjustment scale factor of 1.000120014401728

- ### BENCHMARKS
- BM#1 Nail in top of curb, south side of Lost Creek Road near northwest corner of inlet, 56 feet west and 145 feet north of Northeast Corner of SE ¼, Sec. 14, T27S, R2W Elev.=1351.54 NAVD88 (offsite)
  - BM#2 Nail in northeast corner of traffic signal, northwest corner of Central and 135th Street, 77 feet west and 36 feet north of Southeast Corner of SE ¼, Sec. 14, T27S, R2W Elev.=1349.14 NAVD88 (offsite)

