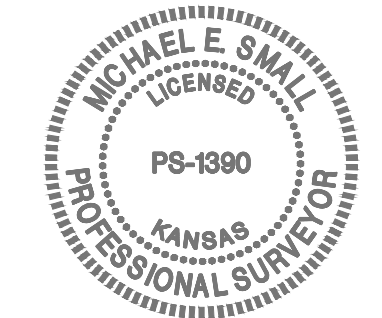
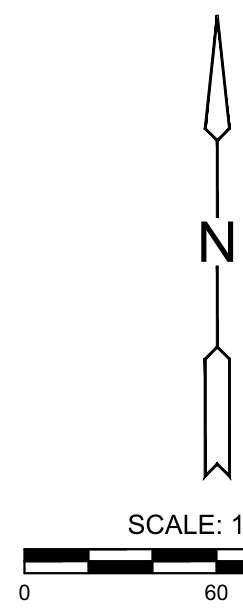
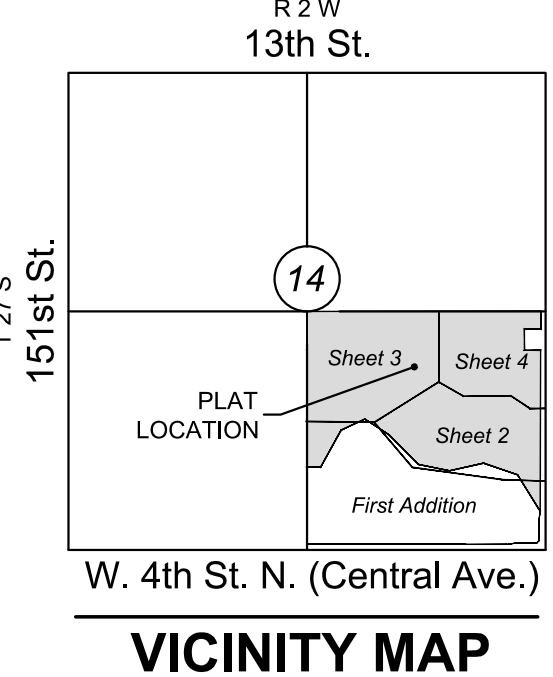


# FINAL PLAT COURTYARDS AT JACOBS FARM SECOND ADDITION

AN ADDITION TO WICHITA,  
SEDGWICK COUNTY, KANSAS



Basis of Bearings: Kansas coordinate system of 1983 south zone bearing of S88°57'26\"/>

### LEGEND

- Date of Survey: June 2022
- △ = Section Corner Monument Found
- = Found 5/8\"/>
- = Set 3/8\"/>
- ⊕ = Benchmark
- (M) = Measured
- (D) = Described
- (P) = Platted
- (CM) = Calculated from Measurement
- (CD) = Calculated from Described
- Dmg. = Drainage
- Util. = Utility
- Esmt. = Easement
- U.E. = Utility Easement
- D.&U.E. = Drainage and Utility Easement
- ① = Lot
- ⑦ = Block

MINIMUM PAD ELEVATIONS LOWEST OPENINGS		
LOT(S) inclusive	BLOCK	ELEVATION NAVD 88
89-90	6	1363.6
91	6	1363.4
92	6	1363.1
93	6	1361.8
94	6	1361.5
95	6	1361.0
96	6	1360.7
97	6	1360.1
98	6	1359.8
99-104	6	1358.5

### BENCHMARKS

- BM#1 Nail in top of curb, south side of Lost Creek Road near northwest corner of inlet, 56 feet west and 145 feet north of Northeast Corner of SE 1/4, Sec. 14, T27S, R2W Elev.=1351.54 NAVD88 (offsite)
- BM#2 Nail in northeast corner of traffic signal, northwest corner of Central and 135th Street, 77 feet west and 36 feet north of Southeast Corner of SE 1/4, Sec. 14, T27S, R2W Elev.=1349.14 NAVD88 (offsite)

