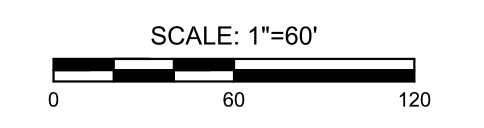
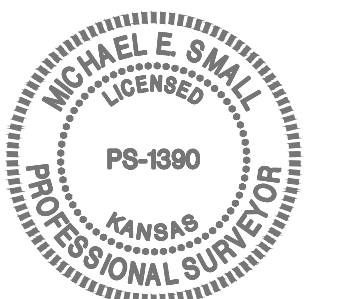
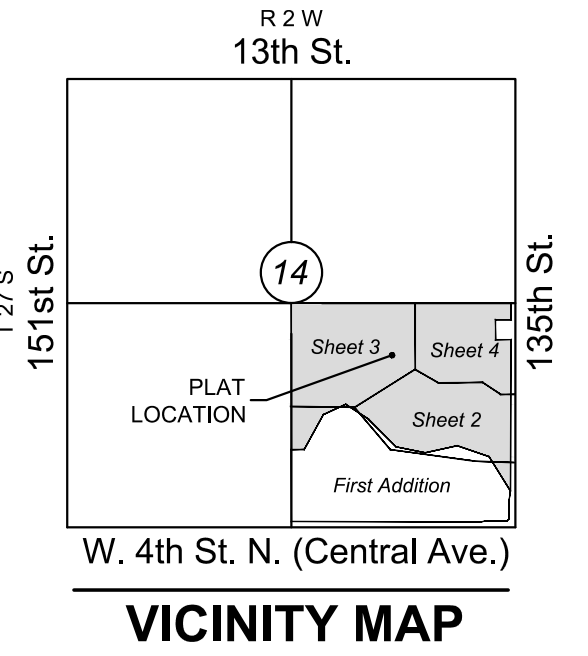


FINAL PLAT COURTYARDS AT JACOBS FARM SECOND ADDITION

AN ADDITION TO WICHITA,
SEDGWICK COUNTY, KANSAS



Basis of Bearings: Kansas coordinate system of 1983 south zone bearing of S88°57'26"W on the south line of Southeast Quarter, Section 14, Township 27 South, Range 2 West of the Sixth Principal Meridian, Sedgwick County, Kansas. This plat is surveyed and platted on NAD83 using Kansas state plane south zone coordinates, modified to the surface, having a combined adjustment scale factor of 1.000120014401728

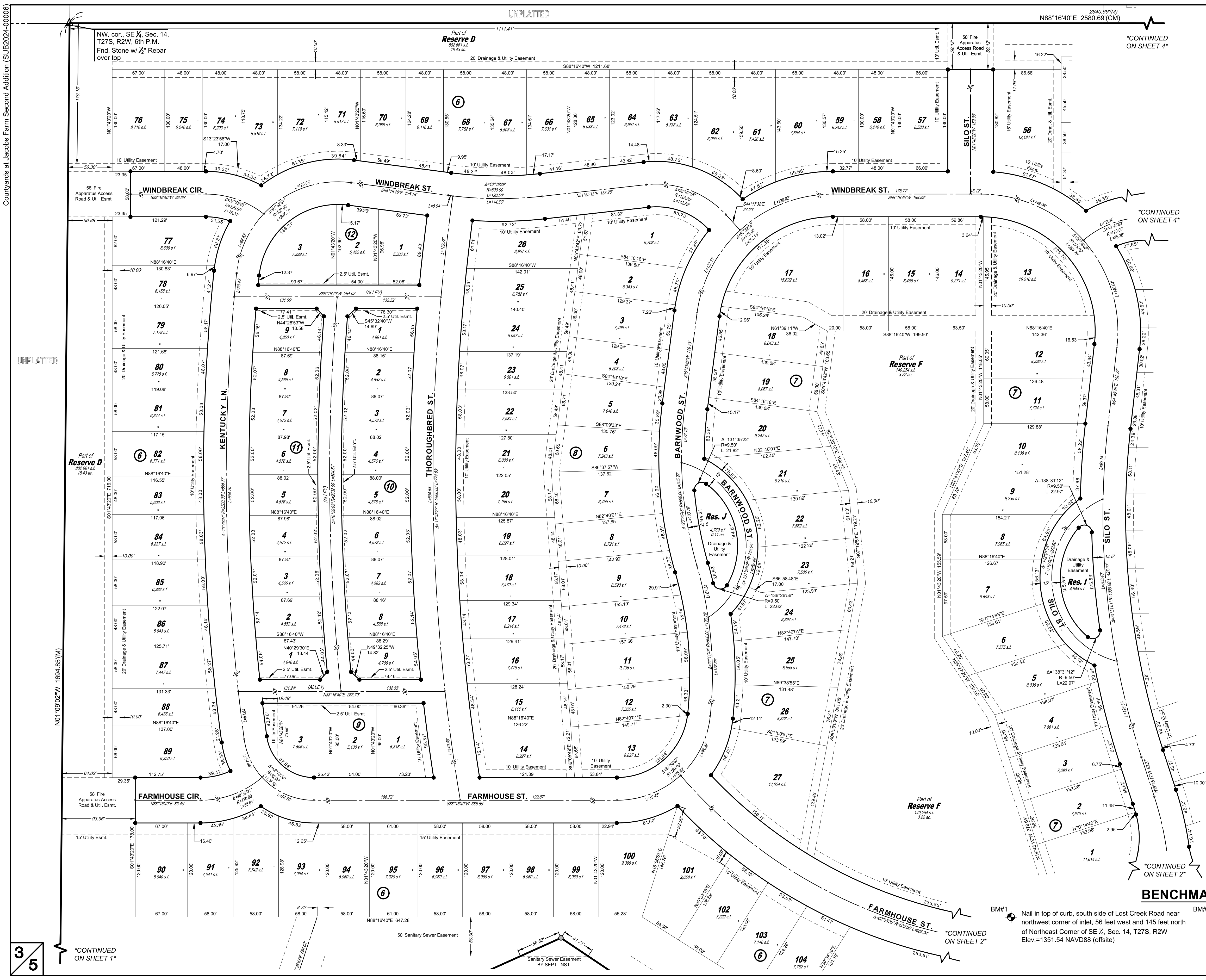
LEGEND

- Date of Survey: June 2022
- △ = Section Corner Monument Found
 - = Found 3/8" rebar w/ MKEC CLS 39 id. cap
 - = Set 3/8" rebar w/ MKEC CLS 39 id. cap
 - ⊕ = Benchmark
 - (M) = Measured
 - (D) = Described
 - (P) = Platted
 - (CM) = Calculated from Measurement
 - (CD) = Calculated from Described
 - Dmg. = Drainage
 - Util. = Utility
 - Esmt. = Easement
 - U.E. = Utility Easement
 - D.&U.E. = Drainage and Utility Easement
 - ① = Lot
 - ⑦ = Block

LOT(S) inclusive	BLOCK	ELEVATION NAVD83
89-90	6	1363.6
91	6	1363.4
92	6	1363.1
93	6	1361.8
94	6	1361.5
95	6	1361.0
96	6	1360.7
97	6	1360.1
98	6	1359.8
99-104	6	1358.5

BENCHMARKS

- BM#1 Nail in top of curb, south side of Lost Creek Road near northwest corner of inlet, 56 feet west and 145 feet north of Northeast Corner of SE 1/4, Sec. 14, T27S, R2W Elev.=1351.54 NAVD88 (offset)
- BM#2 Nail in northeast corner of traffic signal, northwest corner of Central and 135th Street, 77 feet west and 36 feet north of Southeast Corner of SE 1/4, Sec. 14, T27S, R2W Elev.=1349.14 NAVD88 (offset)



3/5
CONTINUED ON SHEET 1

CONTINUED ON SHEET 2

CONTINUED ON SHEET 2

CONTINUED ON SHEET 4

CONTINUED ON SHEET 4

Courtyards at Jacobs Farm Second Addition, (SUB2024-00006)

UNPLATTED

UNPLATTED

NOT TO SCALE

3/5

Courtyards at Jacobs Farm Second Addition, (SUB2024-00006)

