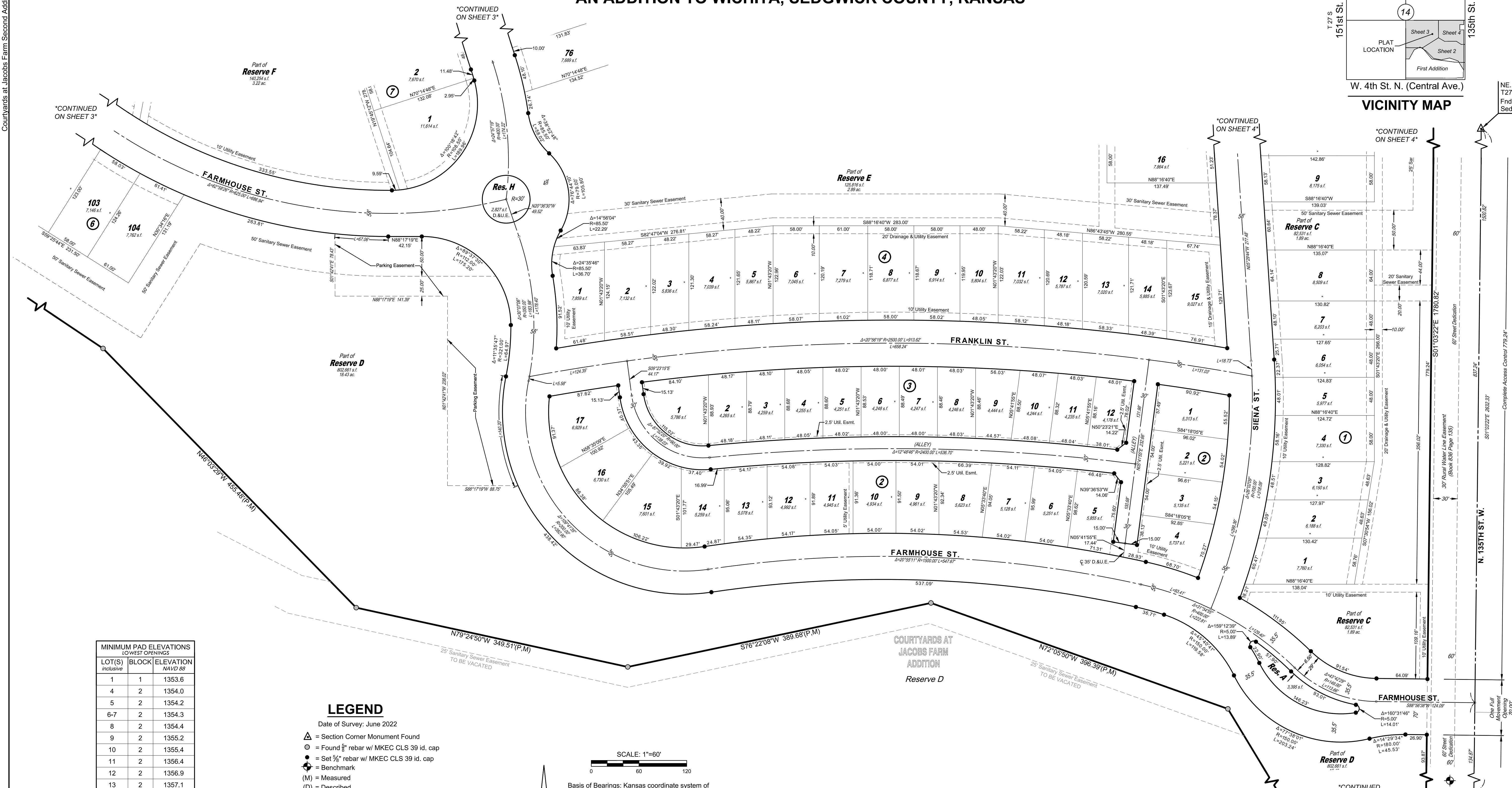
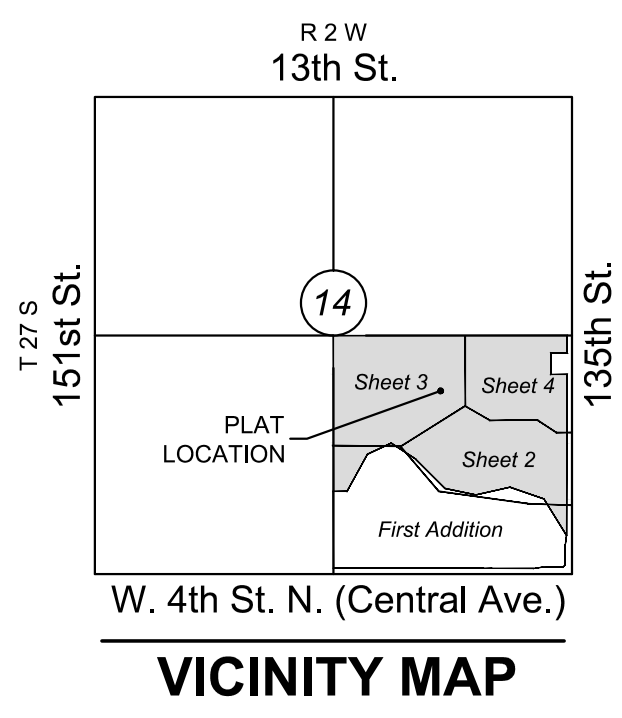


# FINAL PLAT

## COURTYARDS AT JACOBS FARM SECOND ADDITION

AN ADDITION TO WICHITA, SEDGWICK COUNTY, KANSAS



LOT(S) Inclusive	BLOCK	MINIMUM PAD ELEVATIONS LOWEST OPENINGS NAVD88
1	1	1353.6
4	2	1354.0
5	2	1354.2
6-7	2	1354.3
8	2	1354.4
9	2	1355.2
10	2	1355.4
11	2	1356.4
12	2	1356.9
13	2	1357.1
14	2	1357.3
15-16	2	1357.7
104-105	6	1358.5
Reserve F		1359.0

**LEGEND**  
Date of Survey: June 2022

- △ = Section Corner Monument Found
- ⊙ = Found #1 rebar w/ MKEC CLS 39 id. cap
- ⊙ = Set 3/8" rebar w/ MKEC CLS 39 id. cap
- ⊙ = Benchmark
- (M) = Measured
- (D) = Described
- (P) = Platted
- (CM) = Calculated from Measurement
- (CD) = Calculated from Described
- Drng. = Drainage
- Util. = Utility
- Esmt. = Easement
- U.E. = Utility Easement
- D.&U.E. = Drainage and Utility Easement
- 1 = Lot
- ① = Block

**SCALE: 1"=60'**  
0 60 120

Basis of Bearings: Kansas coordinate system of 1983 south zone bearing of S88°57'26"W on the south line of Southeast Quarter, Section 14, Township 27 South, Range 2 West of the Sixth Principal Meridian, Sedgwick County, Kansas.  
This plat is surveyed and platted on NAD83 using Kansas state plane south zone coordinates, modified to the surface, having a combined adjustment scale factor of 1.000120014401728

**BENCHMARKS**

- BM#1 Nail in top of curb, south side of Lost Creek Road near northwest corner of inlet, 56 feet west and 145 feet north of Northeast Corner of SE 1/4, Sec. 14, T27S, R2W Elev.=1351.54 NAVD88 (offsite)
- BM#2 Nail in northeast corner of traffic signal, northwest corner of Central and 135th Street, 77 feet west and 36 feet north of Southeast Corner of SE 1/4, Sec. 14, T27S, R2W Elev.=1349.14 NAVD88

