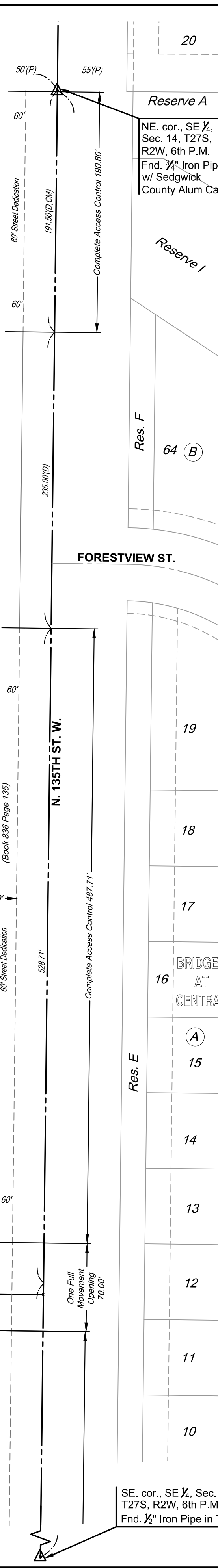
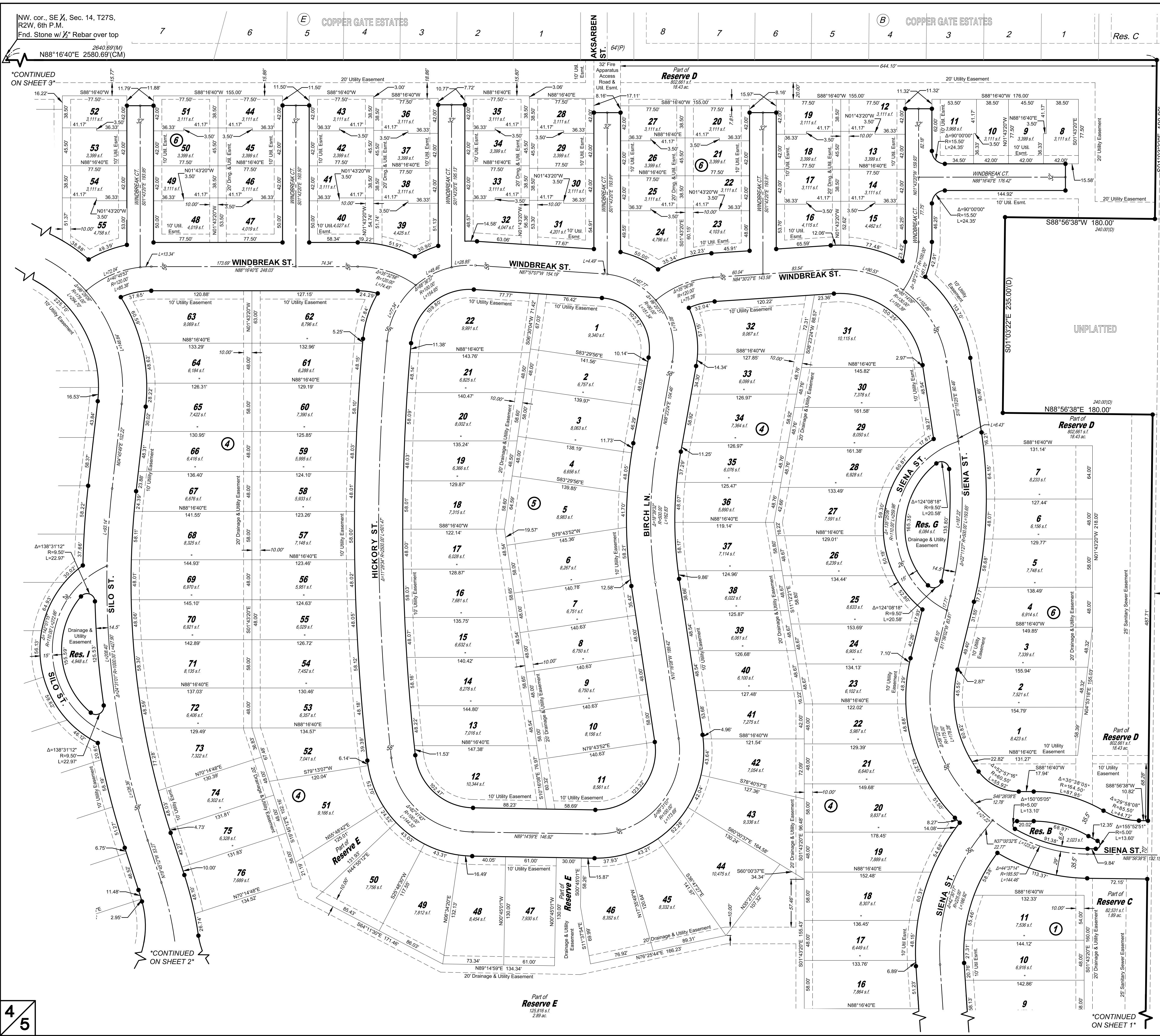
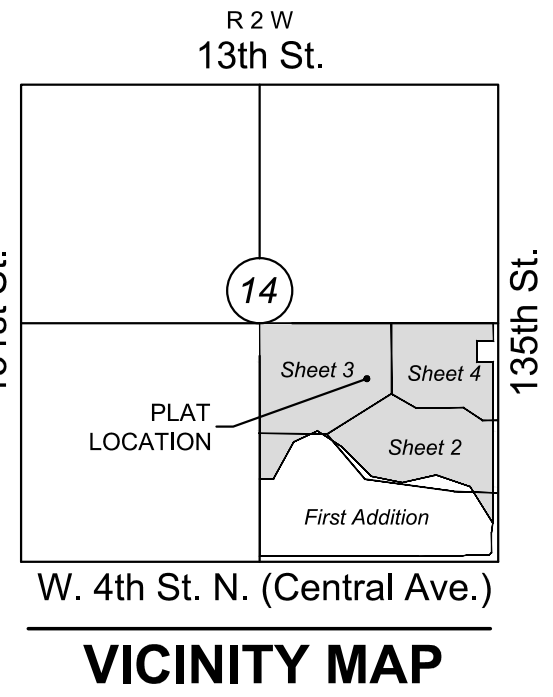


Courtyards at Jacobs Farm Second Addition (SUB2024-00006)



FINAL PLAT COURTYARDS AT JACOBS FARM SECOND ADDITION

AN ADDITION TO WICHITA,
SEDGWICK COUNTY, KANSAS



LEGEND
Date of Survey: June 2022

- △ = Section Corner Monument Found
- = Found 5/8" rebar w/ MKEC CLS 39 id. cap
- = Set 5/8" rebar w/ MKEC CLS 39 id. cap
- ⊕ = Benchmark
- (M) = Measured
- (D) = Described
- (P) = Platted
- (CM) = Calculated from Measurement
- (CD) = Calculated from Described
- Drng. = Drainage
- Util. = Utility
- Esmt. = Easement
- U.E. = Utility Easement
- D.&U.E. = Drainage and Utility Easement
- 1 = Lot
- ① = Block

SCALE: 1"=60'

Basis of Bearings: Kansas coordinate system of 1983 south zone bearing of S88°57'26"W on the south line of Southeast Quarter, Section 14, Township 27 South, Range 2 West of the Sixth Principal Meridian, Sedgwick County, Kansas.

This plat is surveyed and platted on NAD83 using Kansas state plane south zone coordinates, modified to the surface, having a combined adjustment scale factor of 1.000120014401728

BENCHMARKS

- BM#1 Nail in top of curb, south side of Lost Creek Road near northwest corner of inlet, 56 feet west and 145 feet north of Northeast Corner of SE 1/4, Sec. 14, T27S, R2W Elev.=1351.54 NAVD88 (offsite)
- BM#2 Nail in northeast corner of traffic signal, northwest corner of Central and 135th Street, 77 feet west and 36 feet north of Southeast Corner of SE 1/4, Sec. 14, T27S, R2W Elev.=1349.14 NAVD88 (offsite)

MINIMUM PAD ELEVATIONS LOWEST OPENINGS		
LOT(S) inclusive	BLOCK	ELEVATION NAVD 88
8-12	6	1352.0



4/5

SE. cor., SE 1/4, Sec. 14, T27S, R2W, 6th P.M. Fnd. 1/2" Iron Pipe in Thimble

Courtyards at Jacobs Farm Second Addition (SUB2024-00006)