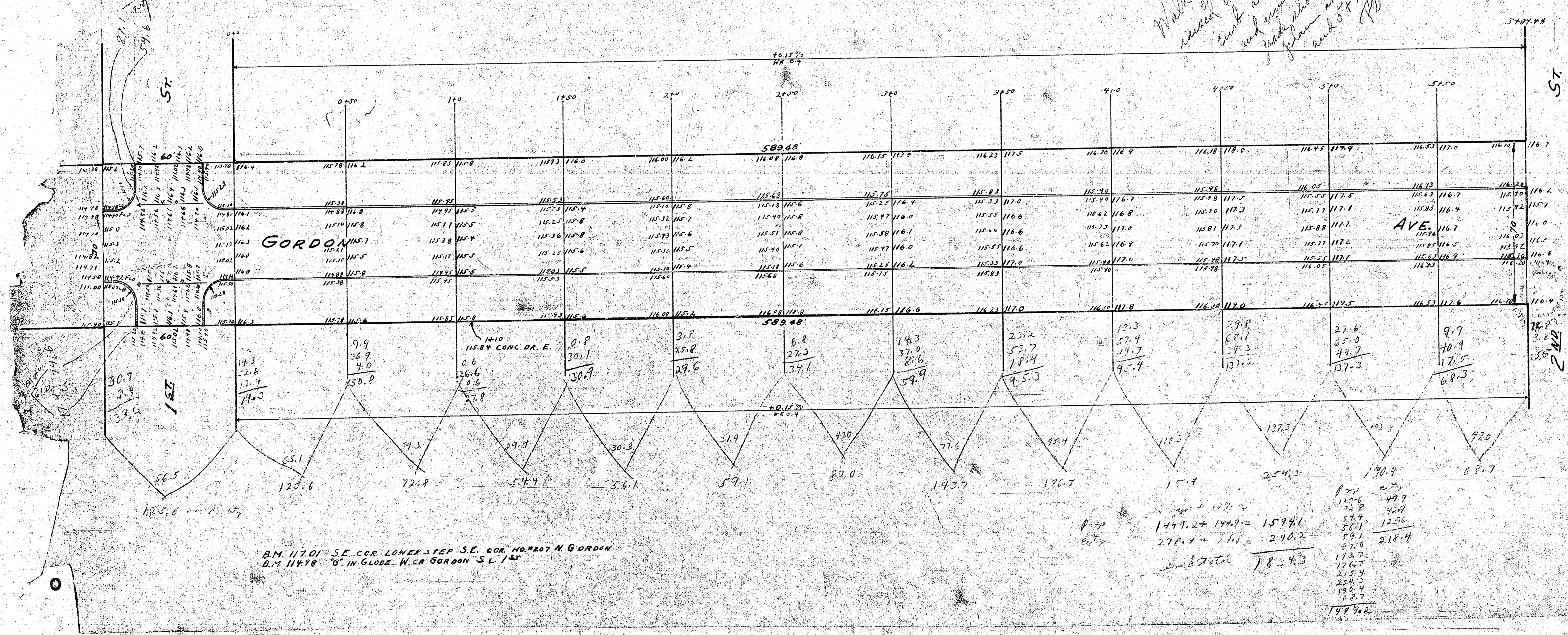


1941
 GORDON AVE. - SL 1ST to SL 2ND
 30' CONC. WITH INT. CB

*Make grade along the
 center of 18' sidewalk to
 curb at 4' 10" to 5' 0"
 and same back to
 sidewalk at 4' 10" to 5' 0"
 and 5' 0" to 7' 0"
 7/24/41*



B.M. 117.01 S.E. COR. LOWER STEP S.E. COR. NO. 207 N. GORDON
 B.M. 114.78 '8' IN GLOBE W. CO. GORDON S.L. 1ST