

IMPROVEMENT PLANS FOR  
**15TH STREET BRIDGE OVER THE WICHITA DRAINAGE CANAL**  
WICHITA, KS

SIDEWALK, PAVING AND GRADING PLAN

PROJECT NO.  
472-2023-085864

SCALE  
1"=10'

DRAWN	DESIGNED	CHECKED
RAM	JRA	JRA

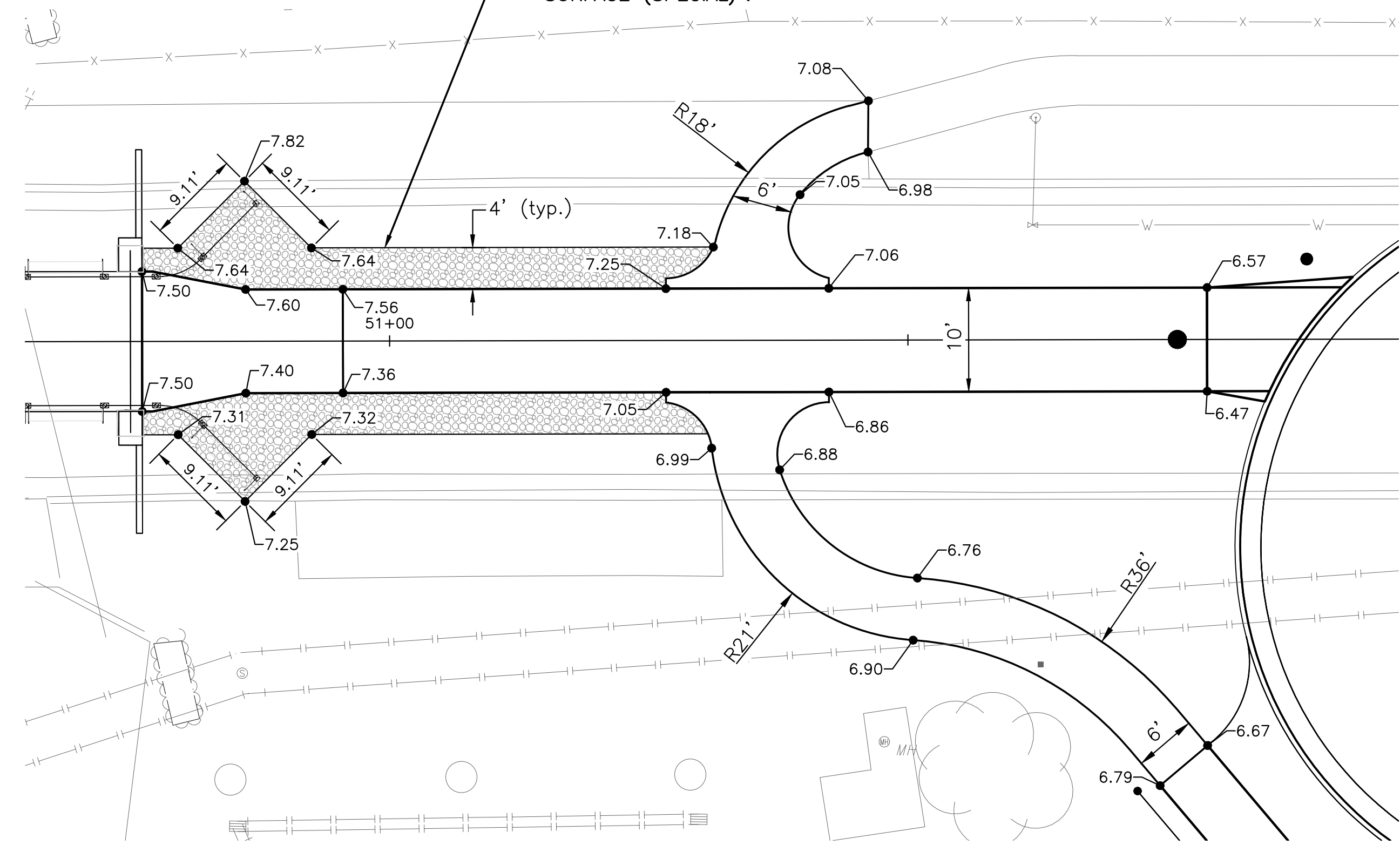
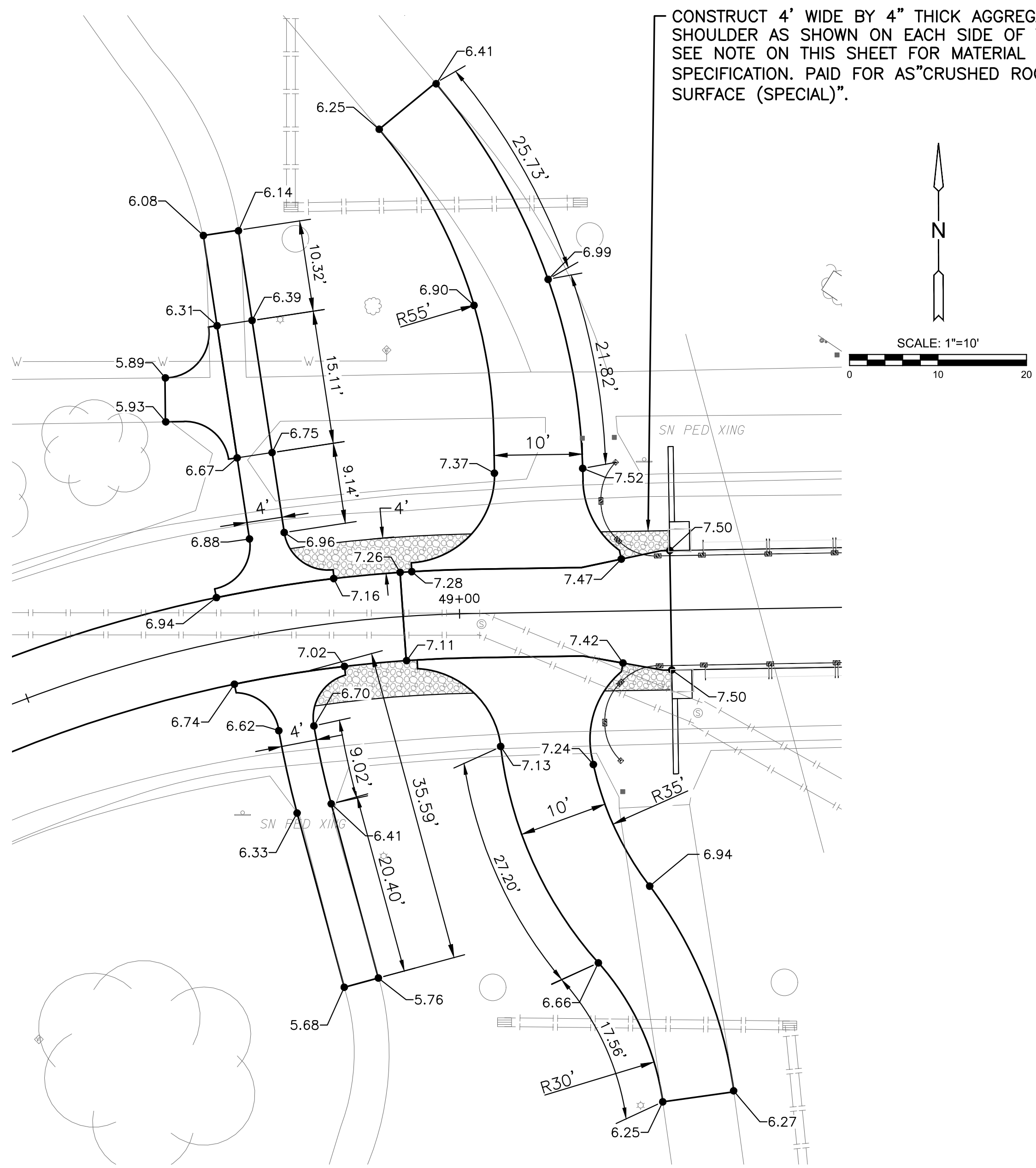
NO.	REVISION	DATE

ISSUED FOR CONSTRUCTION 8-1-2025

SHEET NO.  
10 OF 114

CONSTRUCT 4' WIDE BY 4" THICK AGGREGATE SHOULDER AS SHOWN ON EACH SIDE OF THE PATH. SEE NOTE ON THIS SHEET FOR MATERIAL SPECIFICATION. PAID FOR AS "CRUSHED ROCK SURFACE (SPECIAL)".

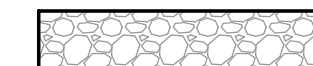
CONSTRUCT 4' WIDE BY 4" THICK AGGREGATE SHOULDER AS SHOWN ON EACH SIDE OF THE PATH. SEE NOTE ON THIS SHEET FOR MATERIAL SPECIFICATION. PAID FOR AS "CRUSHED ROCK SURFACE (SPECIAL)".



DETAIL D (EAST OF BRIDGE)

DETAIL C (WEST OF BRIDGE)

LEGEND

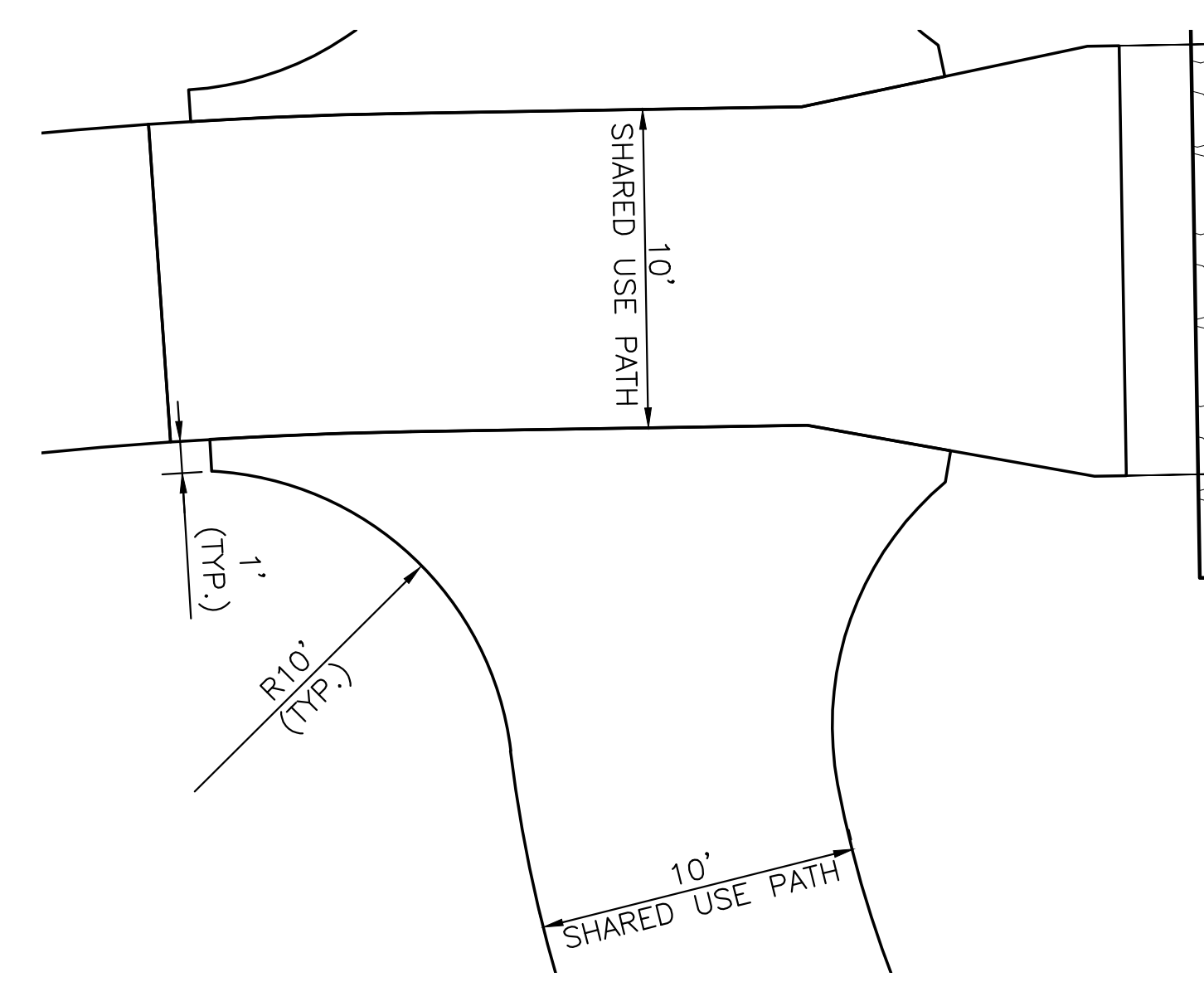
- x.xx PROPOSED ELEVATION
-  AGGREGATE SHOULDER

SURFACING MATERIAL (SPECIAL) SPECIFICATION

ALL FINE AGGREGATE SHALL BE CRUSHED LIMESTONE AND SHALL MEET THE FOLLOWING GRADATION SPECIFICATIONS FOR THE SURFACE MATERIAL. THE FINE AGGREGATE SHALL NOT CONTAIN DIRT, CLAYS OR OTHER DELETERIOUS MATERIAL.

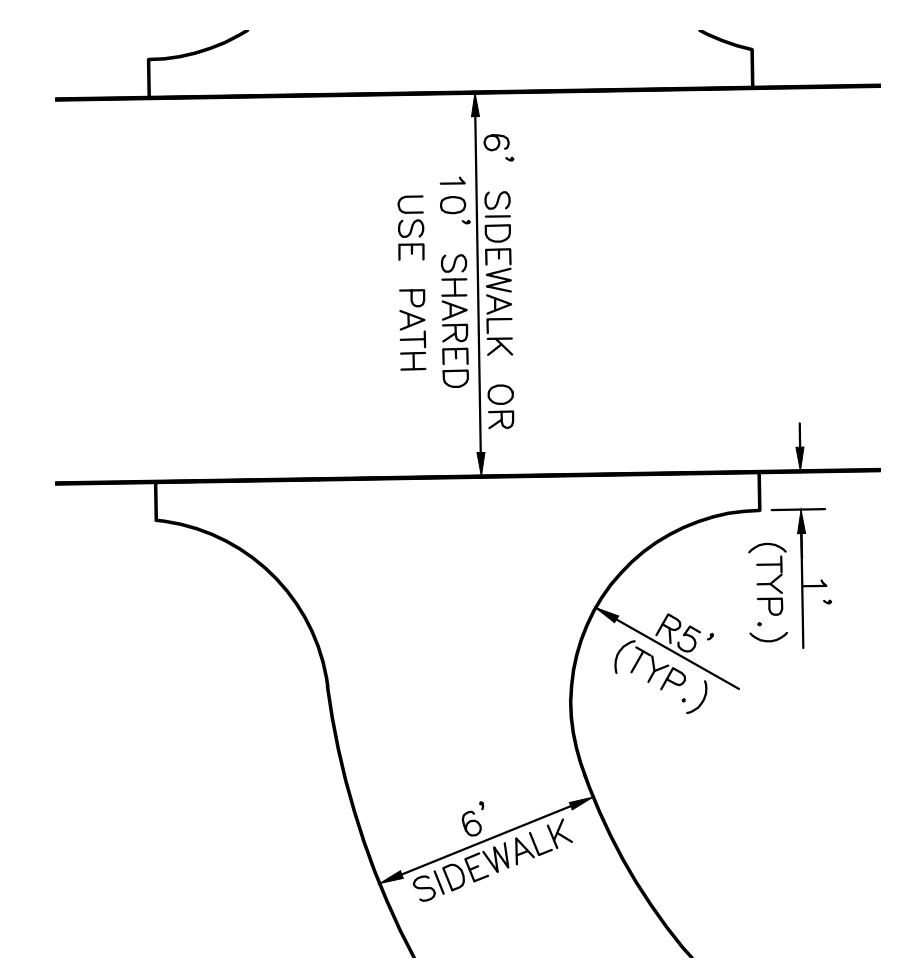
PASSING 3/4 INCH SIEVE	100%
PASSING NO. 4 SIEVE	60-90%
PASSING NO. 10 SIEVE	20-60%
PASSING NO. 40 SIEVE	15-30%
PASSING NO. 200 SIEVE	0-15%

ABSORPTION < 5%



SHARED USE PATH TO SHARED USE PATH WING DETAIL

N.T.S.



SIDEWALK TO SIDEWALK/ SHARED USE PATH WING DETAIL

N.T.S.