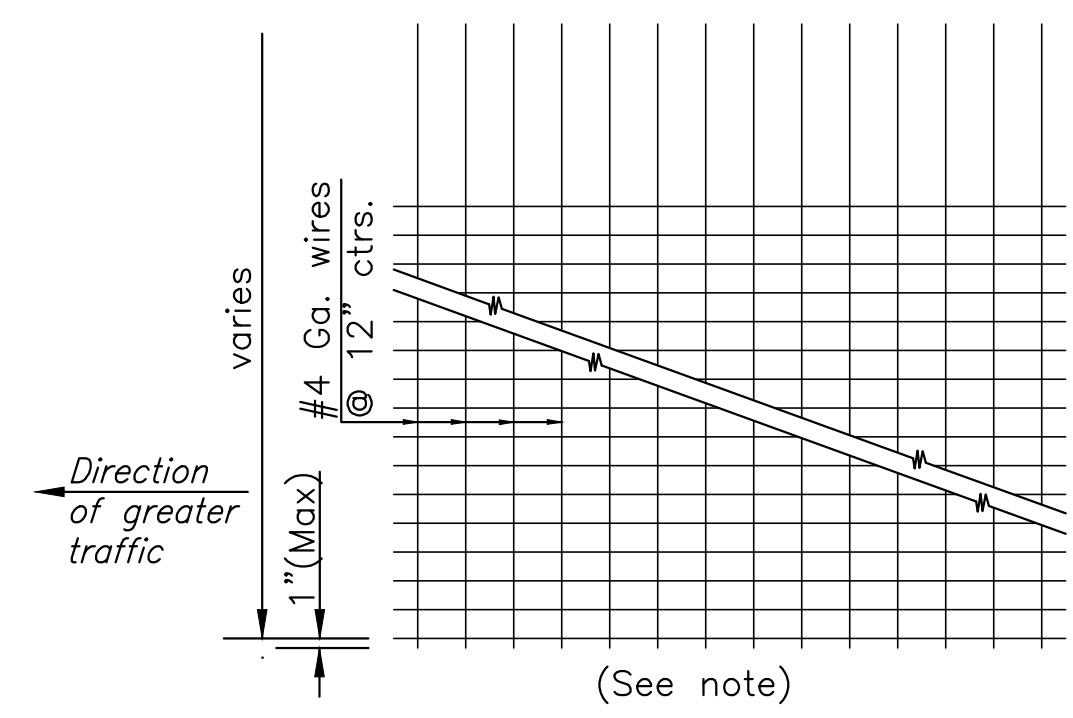
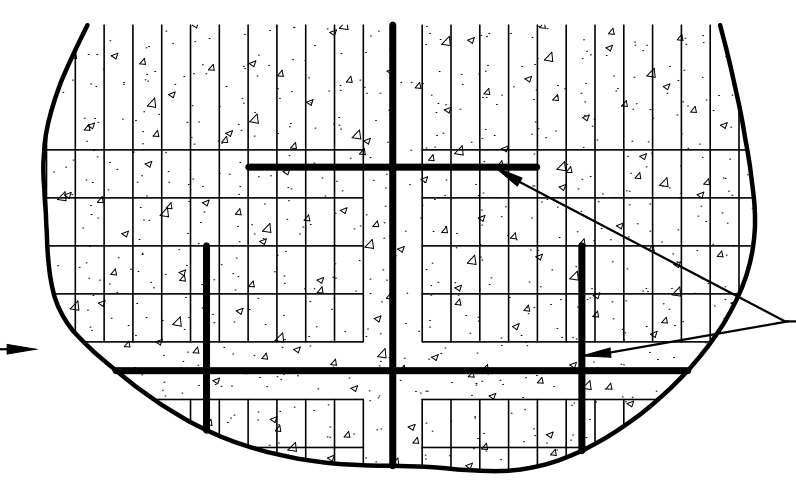


DETAIL OF SEALED CONTRACTION JOINT SAWCUT

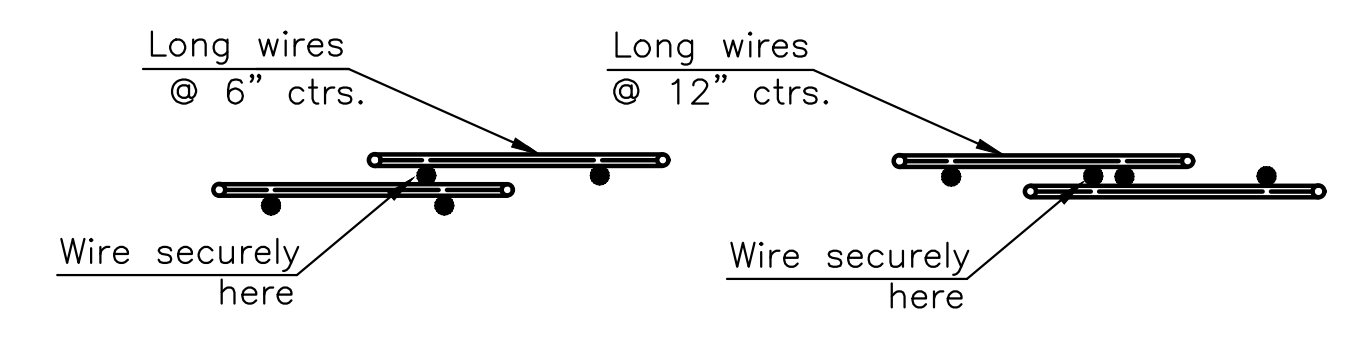
Make an initial $\frac{1}{8}$ " saw cut ($D/3 \pm \frac{1}{4}$ " depth); the second $\frac{3}{8}$ " saw cut is a separate operation done after concrete has gained sufficient strength to avoid spalling as determined by the Engineer.



TYPICAL SHEET OF WELDED WIRE MESH

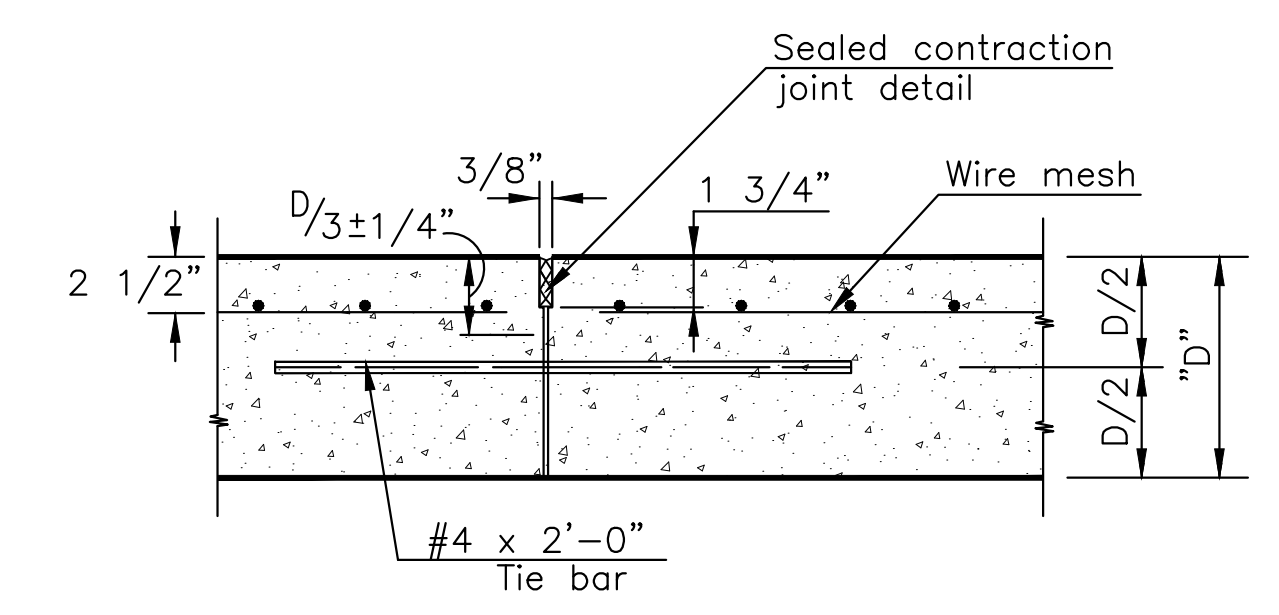


WIRE MESH AND TIE BAR PLACEMENT

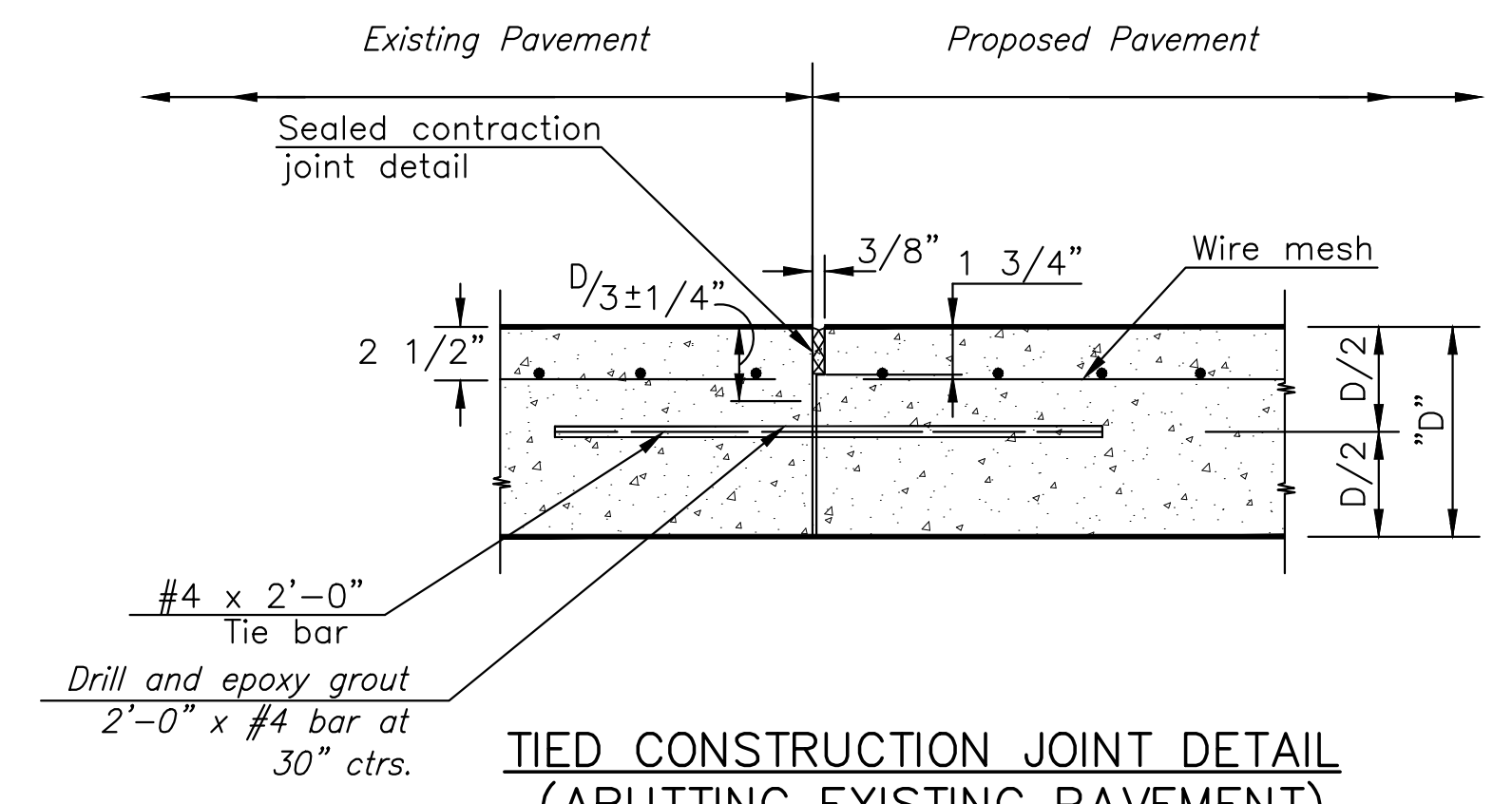


DETAIL OF LAP FOR WIRE MESH

NOTE:
The lap shall extend beyond the first transverse wire of each sheet. The sheets shall be wired securely at the edges and at intervals not to exceed 2'-6" for the full width of the sheet. Approx. weight of wire mesh = 44 lbs. per 100 sq. ft. Other methods for fastening the sheets of wire mesh at the laps may be used with the approval of the Engineer.



TIED CONSTRUCTION JOINT DETAIL



TIED CONSTRUCTION JOINT DETAIL (ABUTTING EXISTING PAVEMENT)

IMPROVEMENT PLANS FOR
15TH STREET BRIDGE OVER THE WICHITA DRAINAGE CANAL
WICHITA, KS

CONCRETE PAVING DETAILS

PROJECT NO.
472-2023-085864

SCALE
NTS

DRAWN DESIGNED CHECKED
LWG JRA JRA

0	ISSUED FOR CONSTRUCTION	8-1-2025
NO.	REVISION	DATE

SHEET NO.