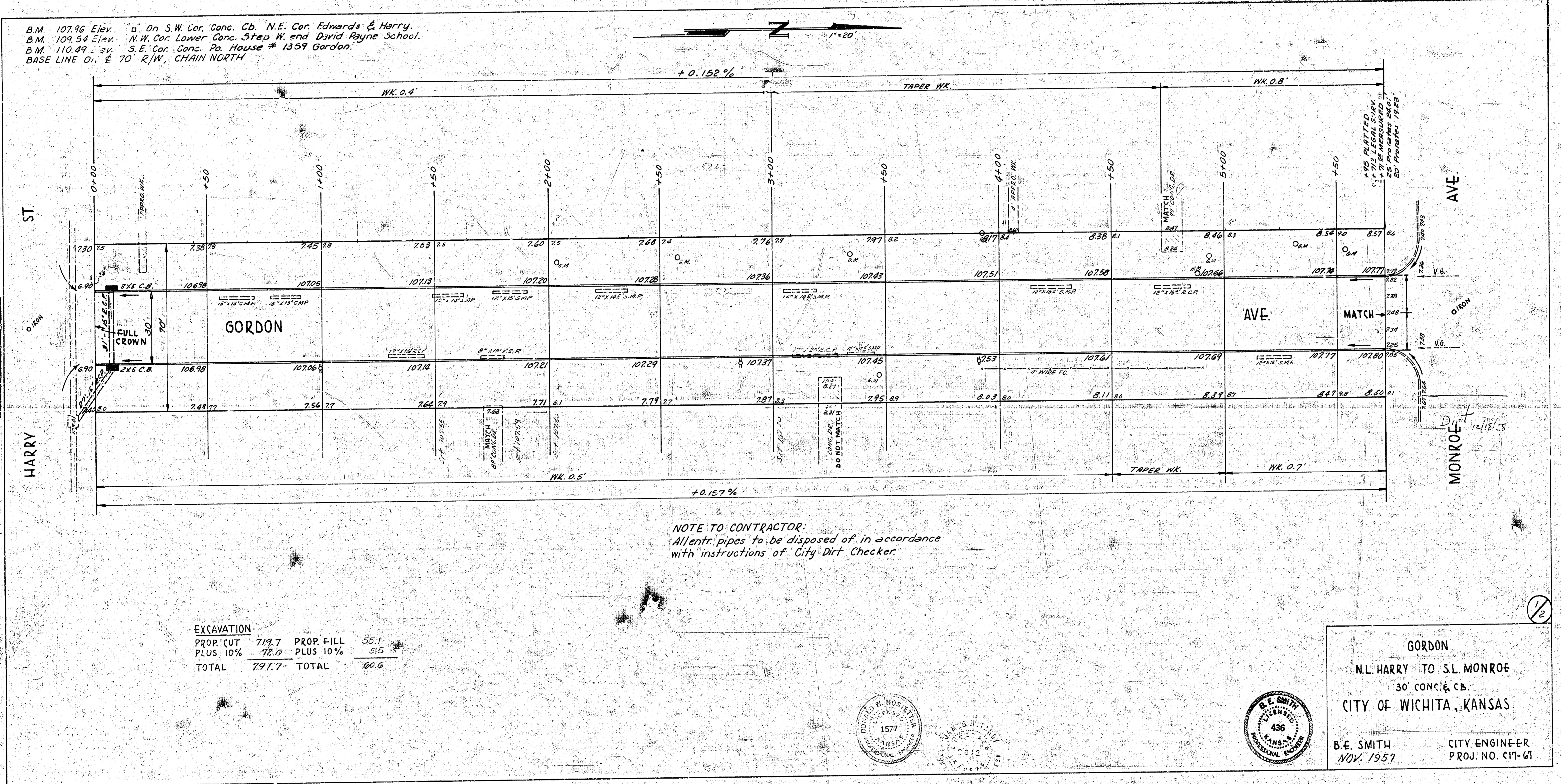
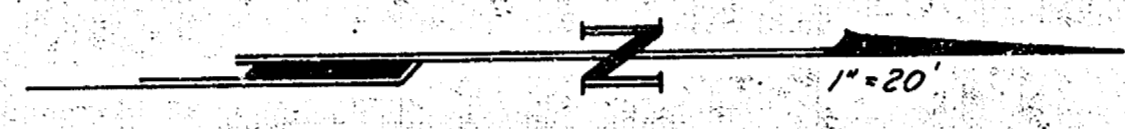


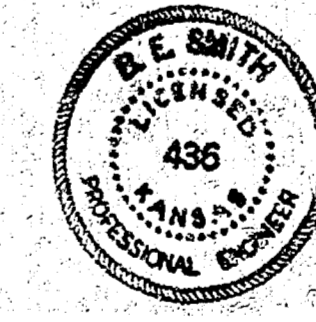
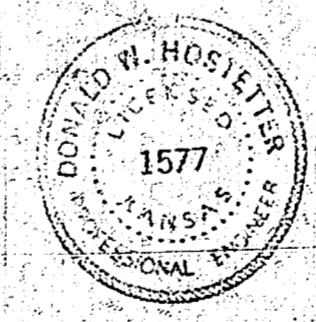
B.M. 10796 Elev. 7.0 On S.W. Cor. Conc. Cb. N.E. Cor. Edwards & Harry.  
 B.M. 10954 Elev. 7.1 N.W. Cor. Lower Conc. Strip W. end David Payne School.  
 B.M. 11049 Elev. 7.2 S.E. Cor. Conc. Pa. House # 1359 Gordon.  
 BASE LINE 0.1' ± 70' R/W, CHAIN NORTH



NOTE TO CONTRACTOR:  
 All entr. pipes to be disposed of in accordance  
 with instructions of City Dirt Checker.

EXCAVATION			
PROP. CUT	719.7	PROP. FILL	55.1
PLUS 10%	72.0	PLUS 10%	5.5
TOTAL	791.7	TOTAL	60.6

GORDON  
 N.L. HARRY TO S.L. MONROE  
 30" CONC. & CB.  
 CITY OF WICHITA, KANSAS  
 B.E. SMITH CITY ENGINEER  
 NOV. 1957 PROJ. NO. C17-61



1/2