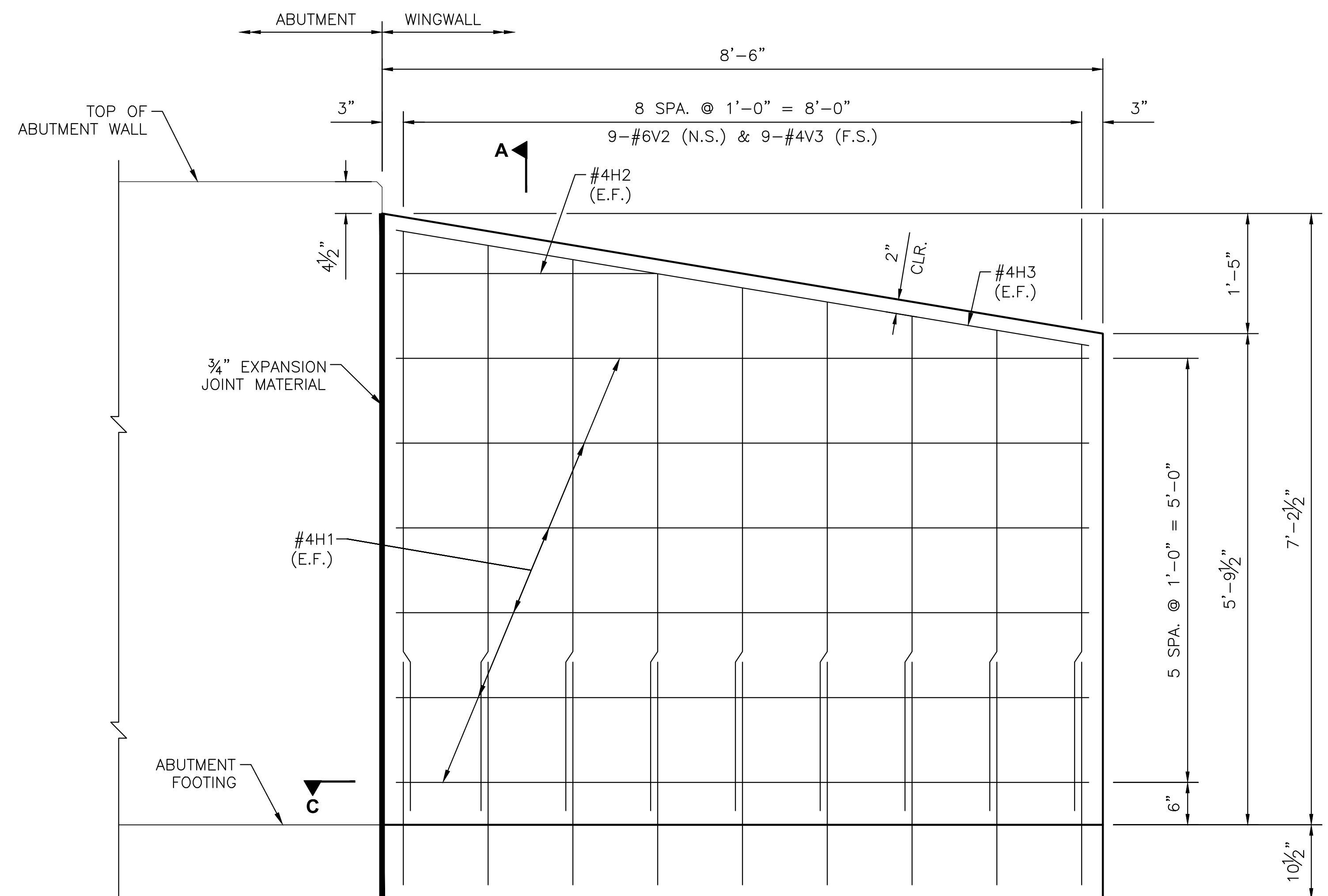
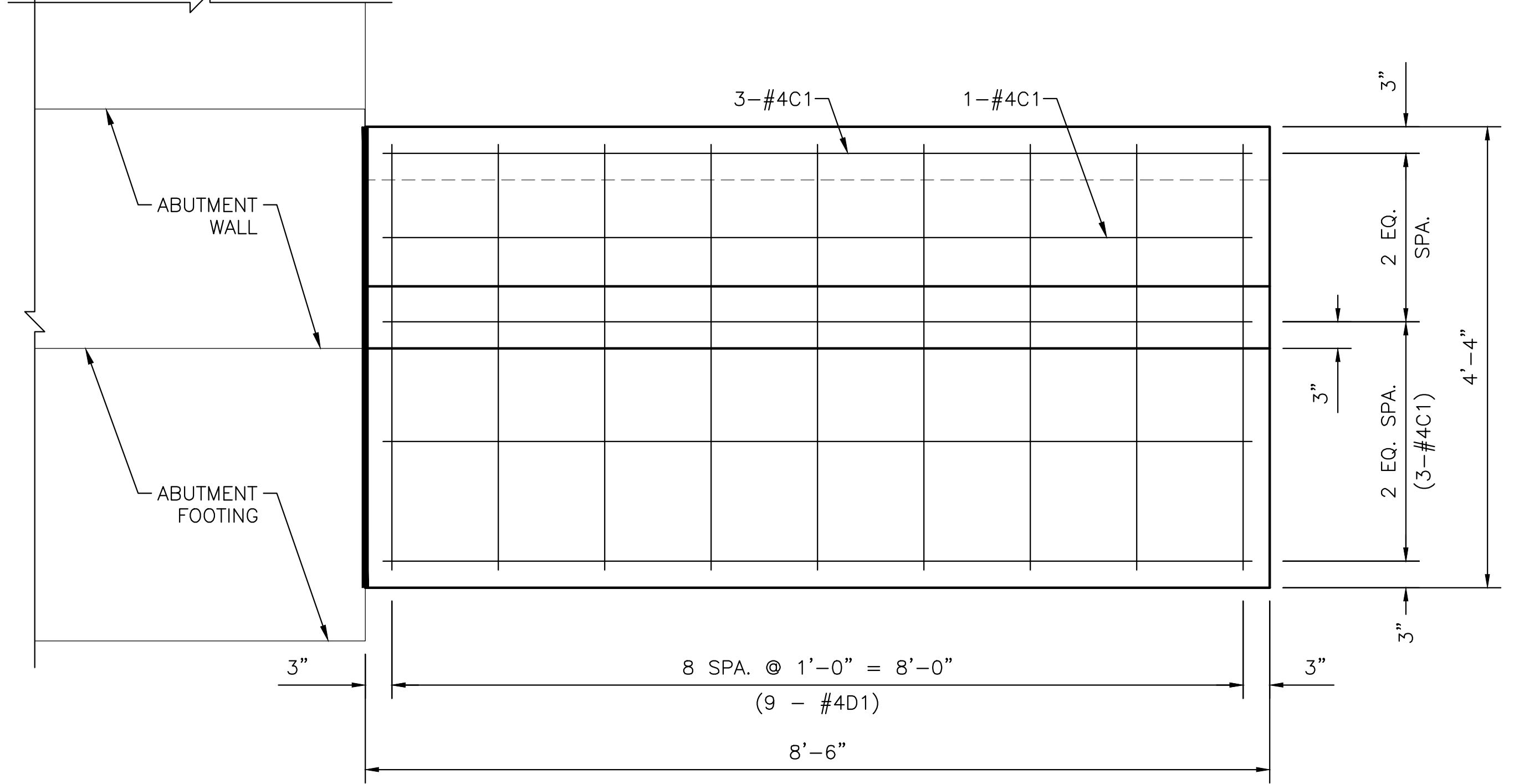


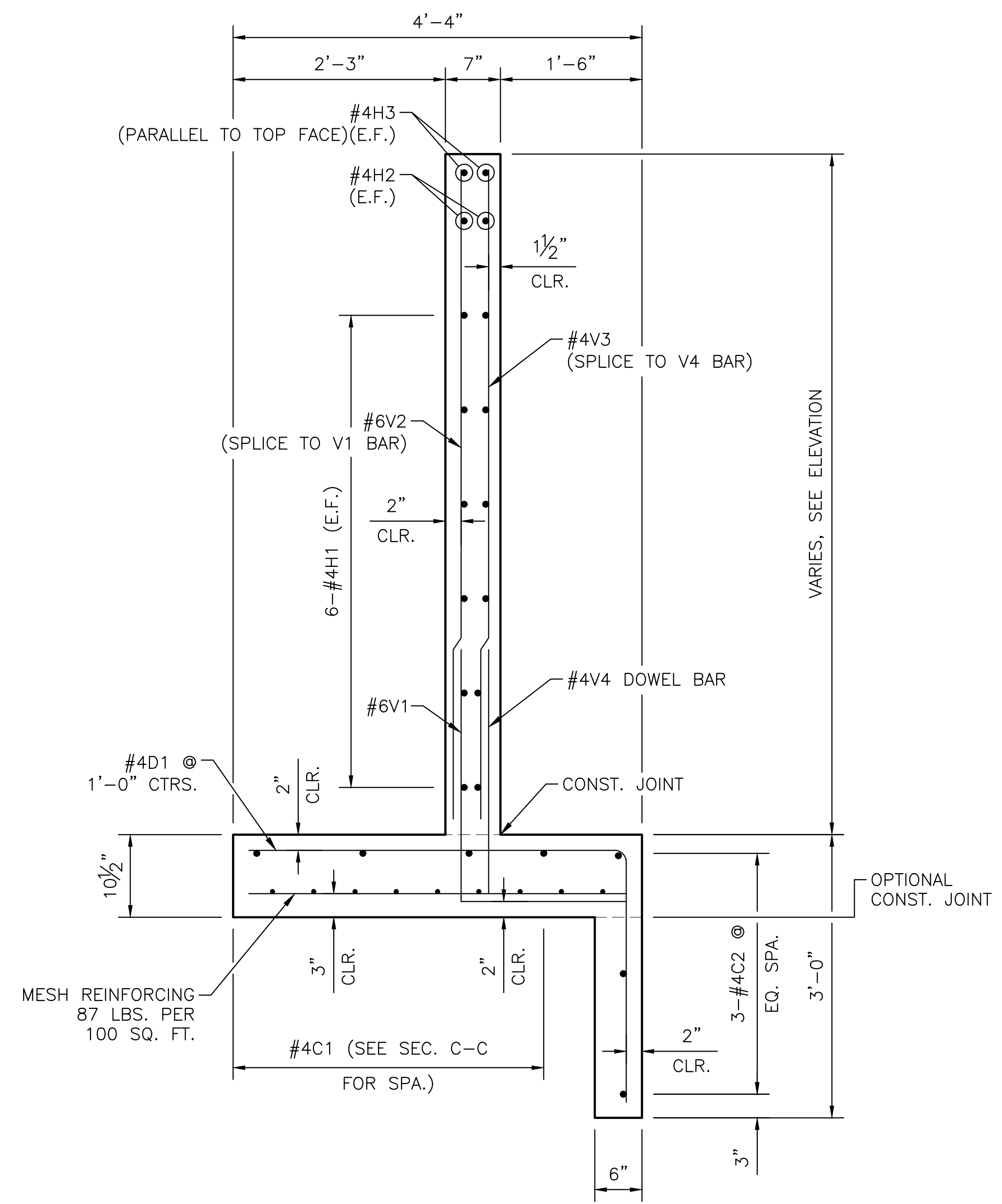
J:\PROJECTS\2023\20231010\431_COW_WDG_BRIDGE REPLACEMENT AT 15TH STREET\100-230431_CAD\SHOTS\06_CIVIL\BRIDGE\230431_WINGWALL DETAILS.DWG
 PLOTTED: Friday, August 01, 2025 @ 02:48PM
 ©2025 MKEC ENGINEERING, INC. ALL RIGHTS RESERVED WWW.MKEC.COM THESE DRAWINGS AND THEIR CONTENTS, INCLUDING, BUT NOT LIMITED TO, ALL CONCEPTS, DESIGNS & DETAILS ARE THE EXCLUSIVE PROPERTY OF MKEC ENGINEERING, INC. (MKEC), AND MAY NOT BE USED OR REPRODUCED IN ANY WAY WITHOUT THE EXPRESS CONSENT OF MKEC.



TYPICAL WINGWALL ELEVATION



SECTION C-C



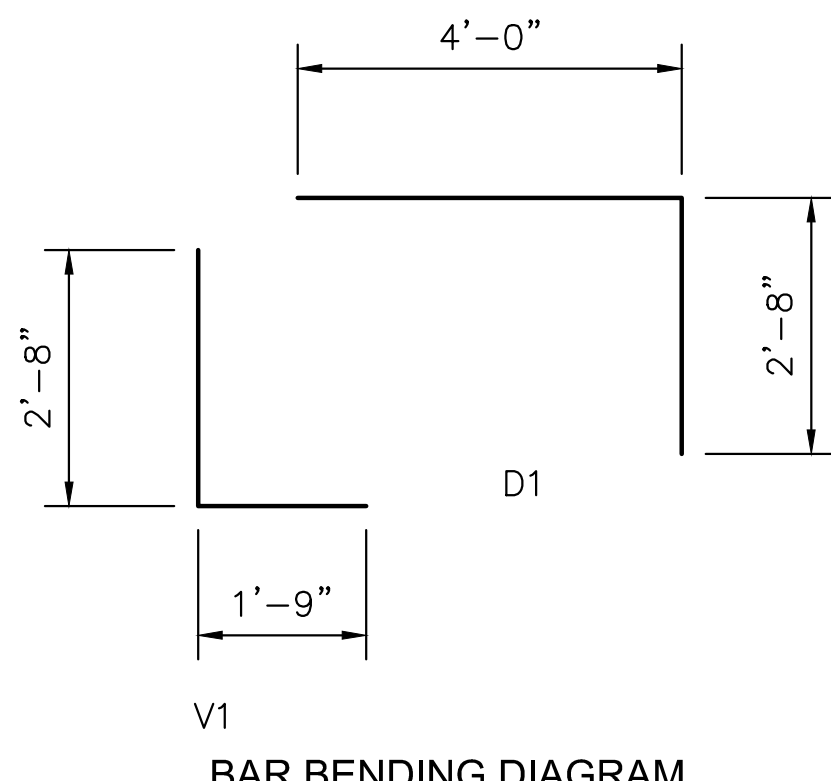
SECTION A-A

NOTE:
 E.F. = EACH FACE
 N.S. = NEAR SIDE
 F.S. = FAR SIDE

NOTE:
 CONST. JOINT MAY BE USED AT CONTRACTOR'S OPTION WHEN APPROVED BY THE ENGINEER. XX BARS OR MESH MAY BE SPLICED THUS: MINIMUM OVERLAP SHALL BE 1'-3". NO INCREASE IN QUANTITIES OR COST SHALL BE ALLOWED WHEN CONTRACTOR ELECTS THIS OPTION.

FOR INFORMATION ONLY

SUMMARY OF QUANTITIES (All Four Wings Included)	
Concrete (Grade 4.0)	11.0 C.Y.
Reinforcing Steel (Gr. 60)	1,360 Lbs.



BAR BENDING DIAGRAM

FOR INFORMATION ONLY

BILL OF REINFORCING STEEL (All Four Wings Included)									
Straight Bars					Bent Bars				
Mark	Size	No.	Length	Remarks	Mark	Size	No.	Length	Remarks
V2	#6	36	6'-2" Avg.	Varies 5'-6" to 6'-10"	V1	#6	36	4'-5"	
V3	#4	36	6'-2" Avg.	Varies 5'-6" to 6'-10"	D1	#4	36	6'-8"	
V4	#4	36	2'-8"						
H1	#4	48	8'-2"						
H2	#4	8	3'-1"						
H3	#4	8	8'-3"						
C1	#4	28	8'-2"						



**IMPROVEMENT PLANS FOR
 15TH STREET BRIDGE OVER THE
 WICHITA DRAINAGE CANAL**
 WICHITA, KS

WINGWALL DETAILS

PROJECT NO. 472-2023-085864

SCALE: _____ NTS

DRAWN	DESIGNED	CHECKED
RAM	DMU	JRA

ISSUED FOR CONSTRUCTION 8-1-2025

NO.	REVISION	DATE

SHEET NO. 30 OF 114