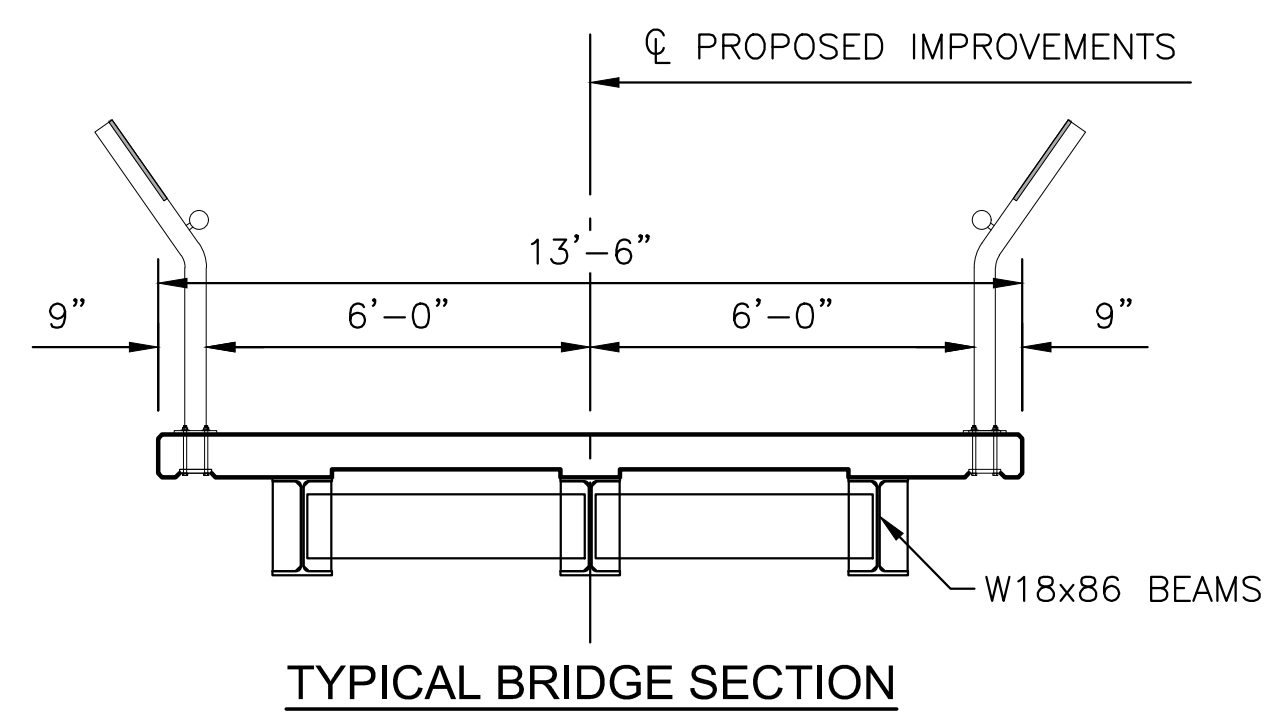
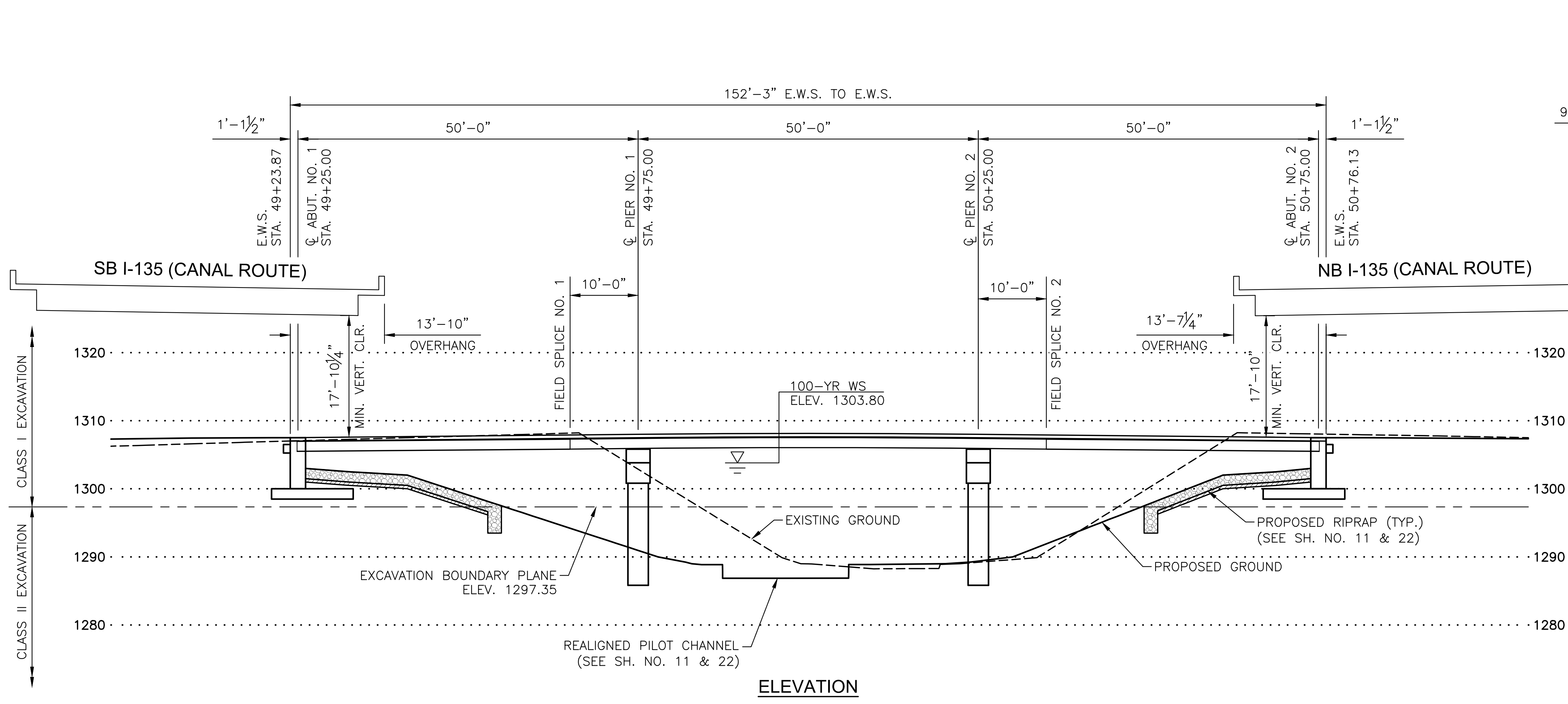


J:\PROJECTS\2023\20230810\10431_COW_WDG_BRIDGE REPLACEMENT AT 15TH STREET\100_230431_CAD\SHOTS\06_CIVIL\BRIDGE\230431_CONSTRUCTION_LAYOUT.DWG
 PLOTTED: Friday, August 01, 2025 @ 09:48:41
 ©2025 MKEC ENGINEERING, INC. ALL RIGHTS RESERVED WWW.MKEC.COM. THESE DRAWINGS AND THEIR CONTENTS, INCLUDING, BUT NOT LIMITED TO, ALL CONCEPTS, DESIGNS, & DETAILS ARE THE EXCLUSIVE PROPERTY OF MKEC ENGINEERING, INC. (MKEC), AND MAY NOT BE USED OR REPRODUCED IN ANY WAY WITHOUT THE EXPRESS CONSENT OF MKEC.



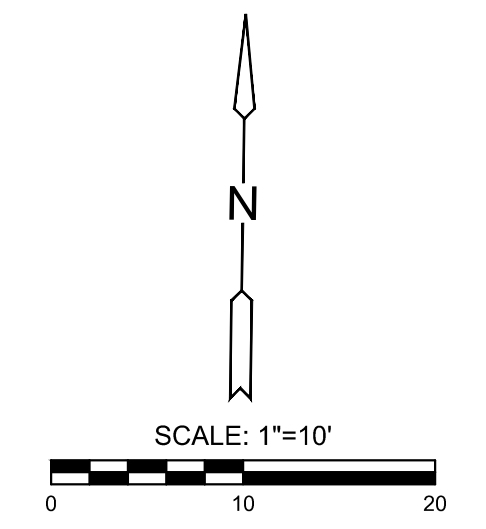
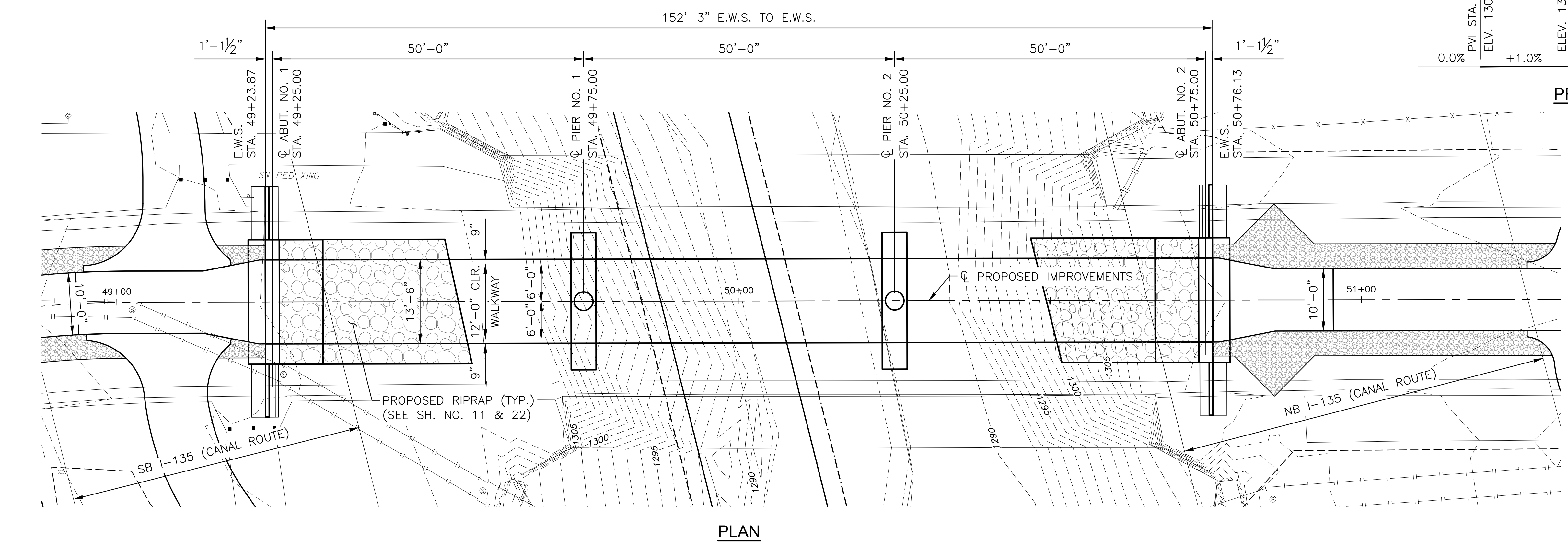
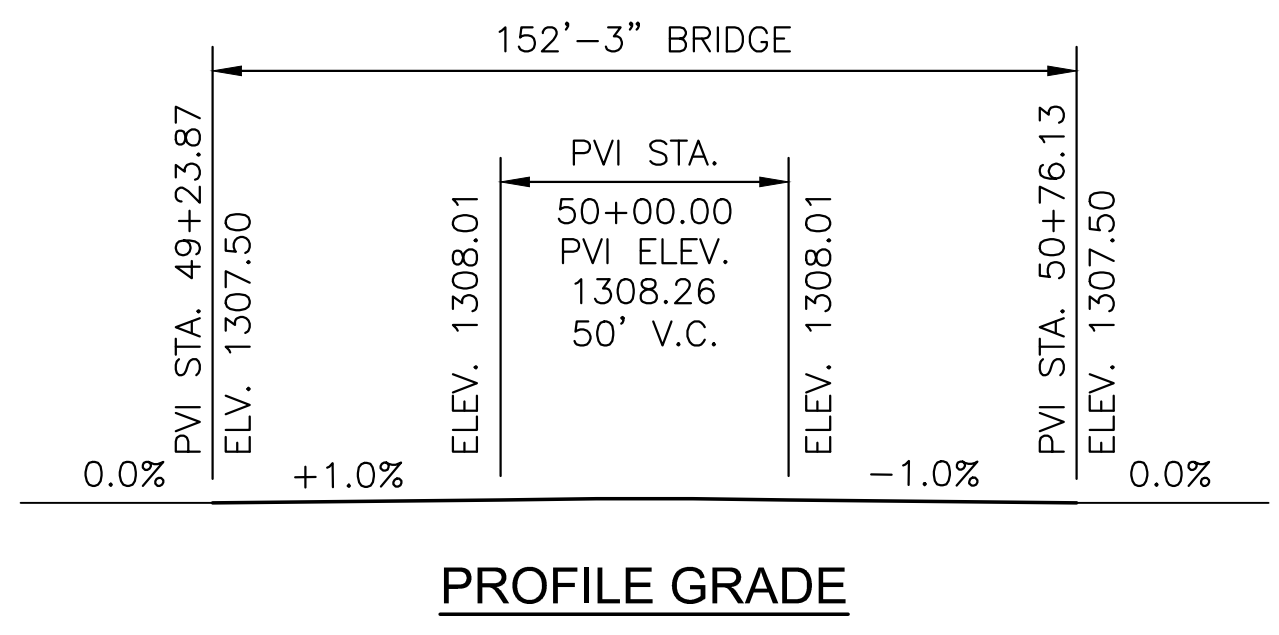
**IMPROVEMENT PLANS FOR
 15TH STREET BRIDGE OVER THE
 WICHITA DRAINAGE CANAL**
 WICHITA, KS



DRAINAGE DATA

Drainage Area	34.9	Sq. Mi.
Design Frequency	100	Years
Design Discharge (Q ₁₀₀)	7,690	cfs
Design High Water Elevation	1303.8	Ft.
Change in Design Backwater	0.0	Ft.
Design Backwater Elevation	1303.3	Ft.
Overtopping Elevation	1308.6	Ft.
Overtopping Discharge	N/A	cfs
Overtopping Frequency	>100	Years
Discharge at Q ₁₀₀	7,690	cfs
Change in Backwater at Q ₁₀₀	0.0	Ft.
Backwater Elevation at Q ₁₀₀	1303.3	Ft.
Historic High Water Elevation	UNKNOWN	Ft.
Ordinary High Water Elevation	**1295.85	Ft.
Existing Waterway Opening	768.7	Sq. Ft.
Total Waterway Provided	1,463.9	Sq. Ft.
Design Waterway Provided	1,303.8	Sq. Ft.
Estimated Ordinary High Water Discharge	**1,720	cfs

** BASED ON PRE-PROJECT CORRECTED EFFECTIVE MODEL.



BRIDGE CONSTRUCTION LAYOUT

PROJECT NO.	472-2023-085864	
SCALE	1"=10'	
DRAWN	DESIGNED	CHECKED
RAM	DMU	JTH
ISSUED FOR CONSTRUCTION	8-1-2025	
NO.	REVISION	DATE
SHEET NO.	34 OF 114	