

STATE	PROJECT NO.	YEAR	SHEET NO.	TOTAL SHEETS
KANSAS	472-2023-085864	2025	47	114

**GENERAL NOTES**

Reference is made to the latest edition of the CRSI "Manual of Standard Practice" for recommended industry practices concerning reinforcing steel.

Use only the following types of bar supports:

- 1) Wire Bar Supports:
  - a) Epoxy coated reinforcing: Class 1 Protection
  - b) Non-epoxy coated reinforcing: Class 1, 2, or 3 Protection
- 2) Plastic Bar Supports
- 3) Supplementary bars

When securing epoxy coated reinforcement, use tie wires or metal clips that are epoxy or plastic coated.

Do not weld reinforcing steel to bar supports or to other reinforcing steel. Shop weld spacer frames for haunched slabs.

Tie bars at all intersections around the perimeter of each mat and at not less than 2'-0" centers or at every intersection, whichever is greater.

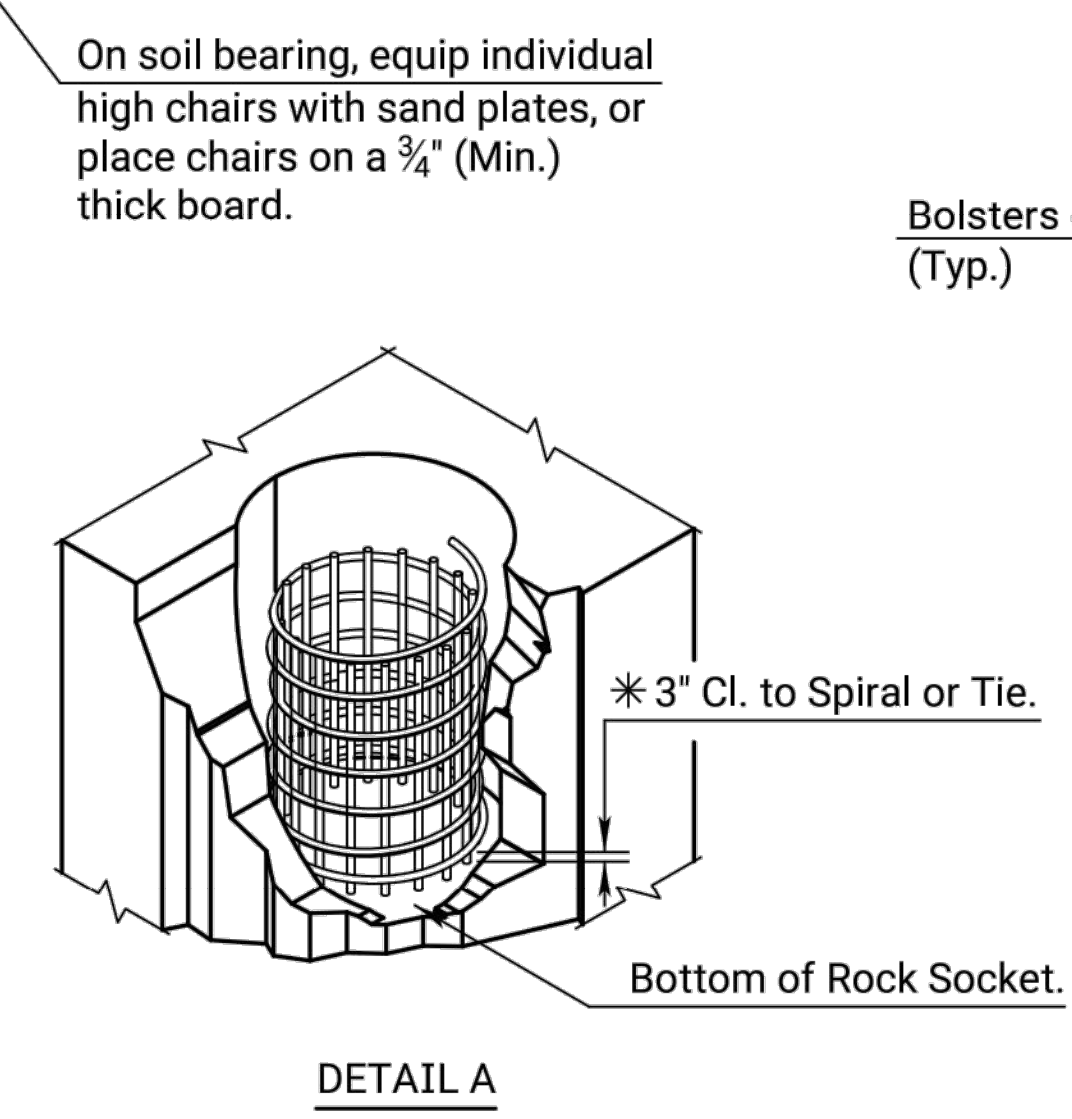
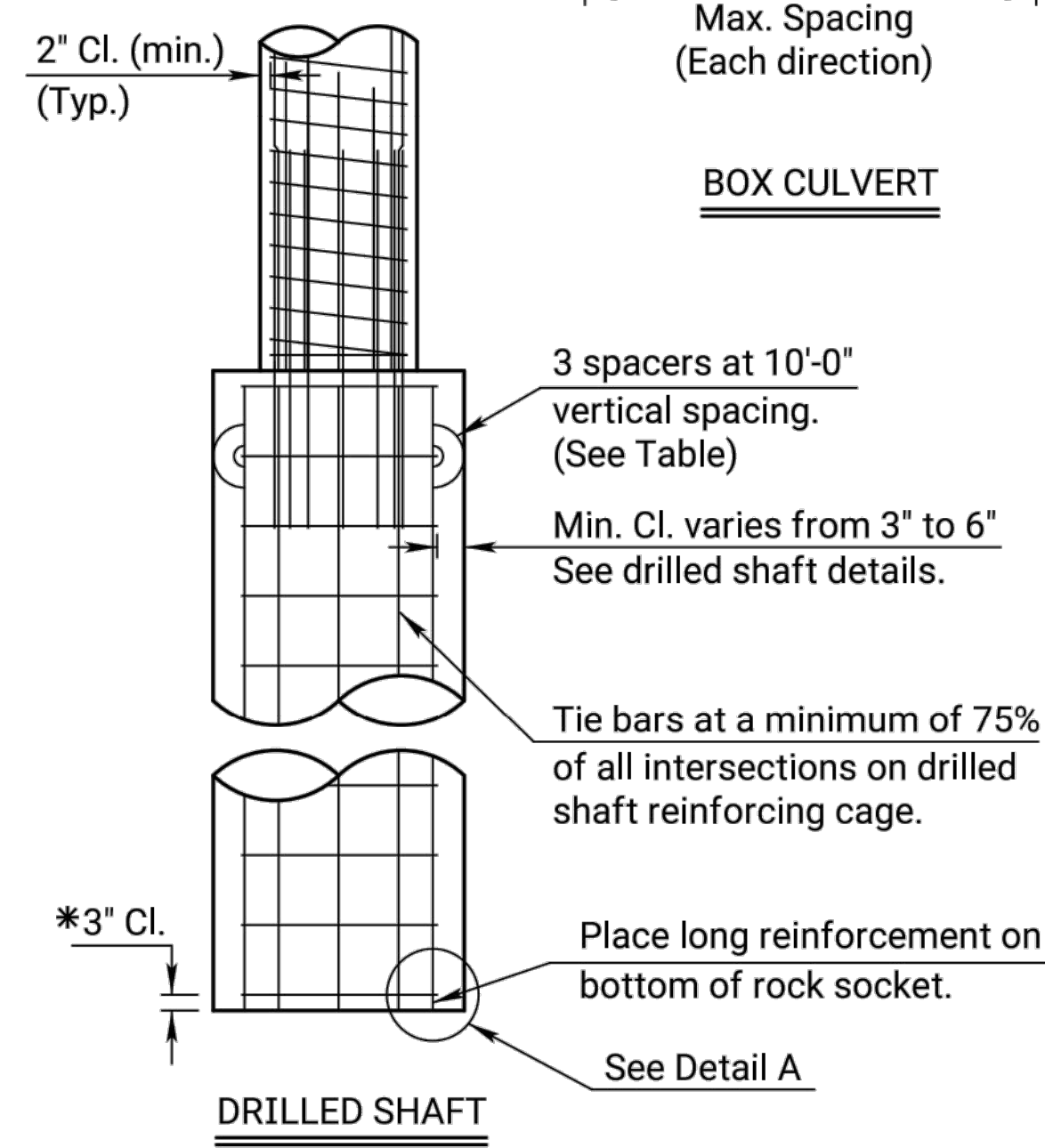
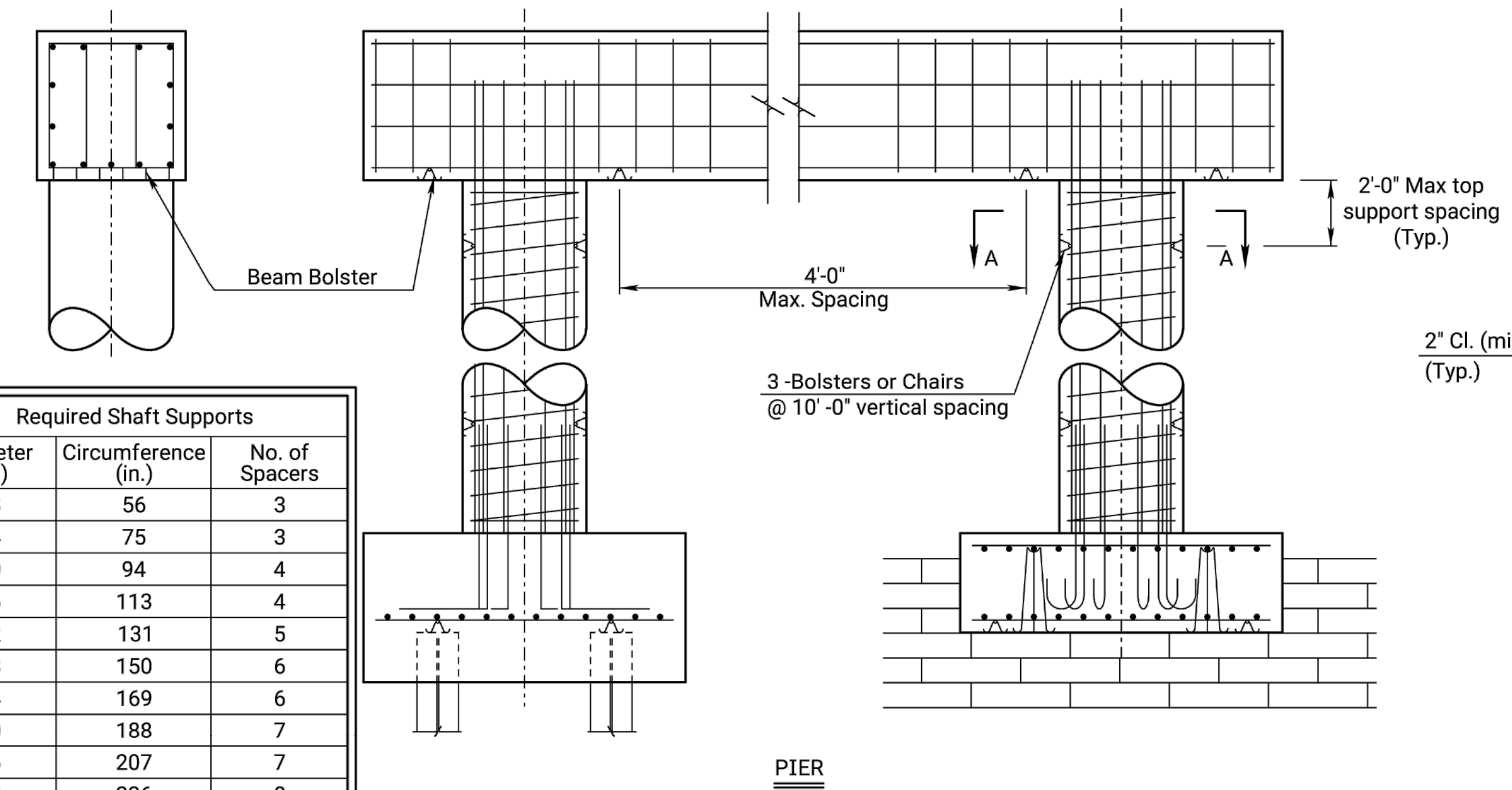
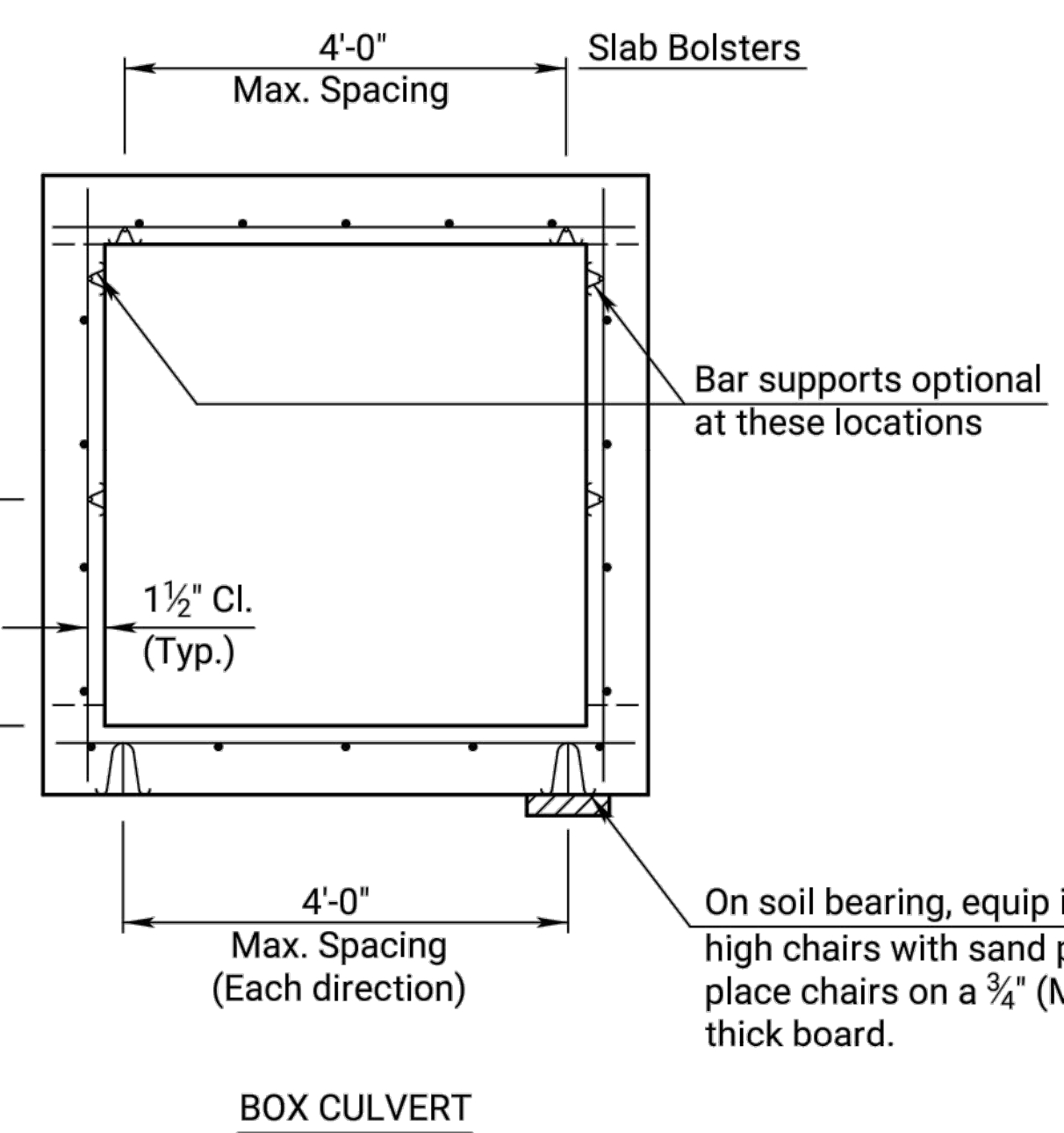
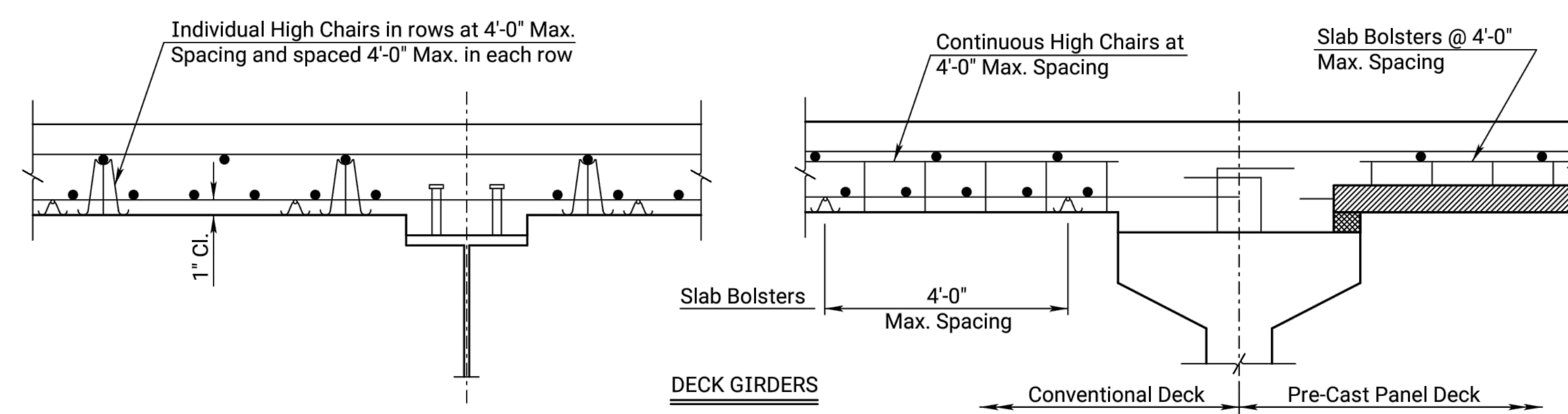
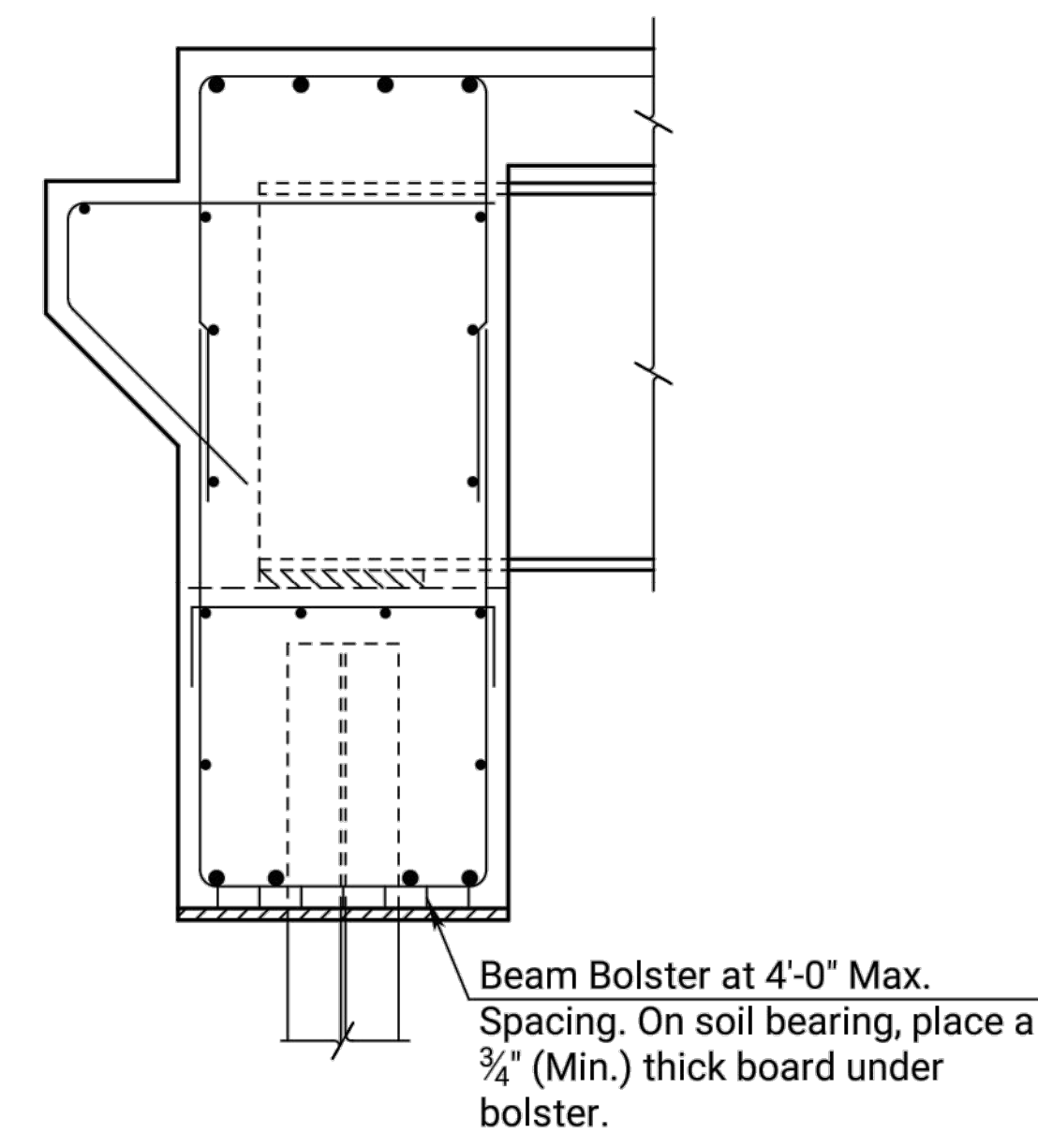
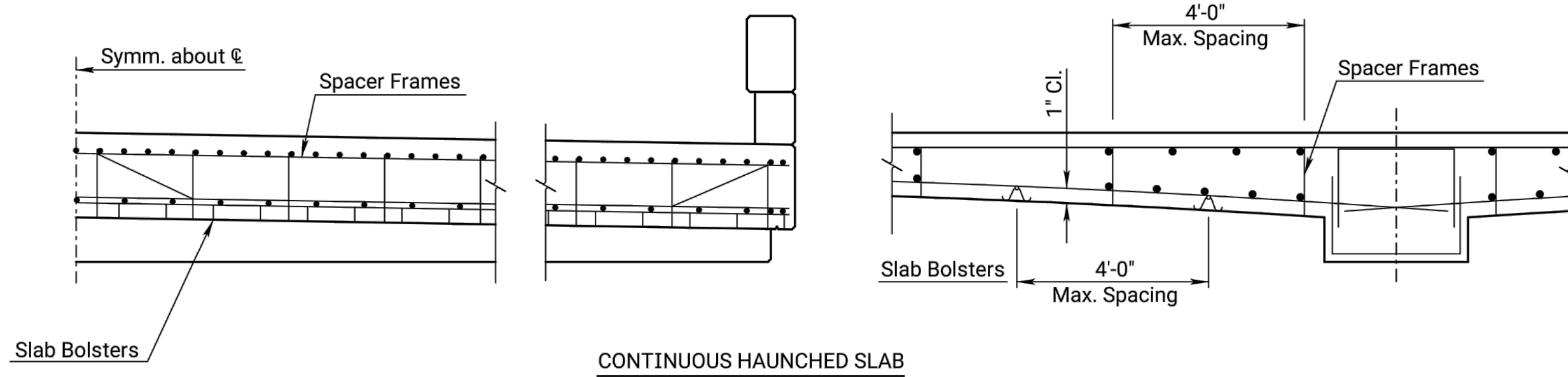
Where more than one length of bar support is required, lap the end legs so they are locked or tied together.

Use proper height supports to maintain the distance between the reinforcing and the formed surface or the top surface of deck slabs within 1/4" of that indicated on the plans.

Spacings shown are maximums. Use sufficient supports, as determined by the Engineer, to retain the reinforcing steel in position.

Construct any platforms, required for the support of workers and/or equipment during concrete placement, directly on the forms and not on the reinforcing steel.

Designs and arrangements of Supports or Spacers other than as shown on this sheet, may be used with the permission of the Engineer.



Required Shaft Supports		
Diameter (in.)	Circumference (in.)	No. of Spacers
18	56	3
24	75	3
30	94	4
36	113	4
42	131	5
48	150	6
54	169	6
60	188	7
66	207	7
72	226	8
78	244	9
84	263	9
90	282	10
96	301	11
102	320	11
108	339	12

05	11-10-10	Column Bar Supports Required	J.P.J.	T.L.F.
04	12-01-05	Drilled Shaft Spiral Steel Placement	J.P.J.	K.F.H.
03	08-21-00	Added Pre-Cast Panel Detail	R.A.M.	K.F.H.
NO.	DATE	REVISIONS	BY	APPD

KANSAS DEPARTMENT OF TRANSPORTATION

**SUPPORTS AND SPACERS FOR REINFORCING STEEL**

BR120

FHWA APPROVAL 11-17-10 APPD Terry L. Fleck

DESIGNED	R.A.M.	DETAILED	R.A.A.	QUANTITIES	TRACED	R.A.A.
DESIGN CK.	L.R.R.	DETAIL CK.	R.A.M.	QUAN. CK.	TRACE CK.	R.A.M.

Plotted by: KDOT#CADD\_Support\_kg.gov 25-JUN-2022 00:07  
J:\Projects\2023\2301010431\_COW\_WDC\_Bridge Replacement at 15th Street\00 230431 CAD\SHTS\05 Civil\Par\230431\_BR120.dwg