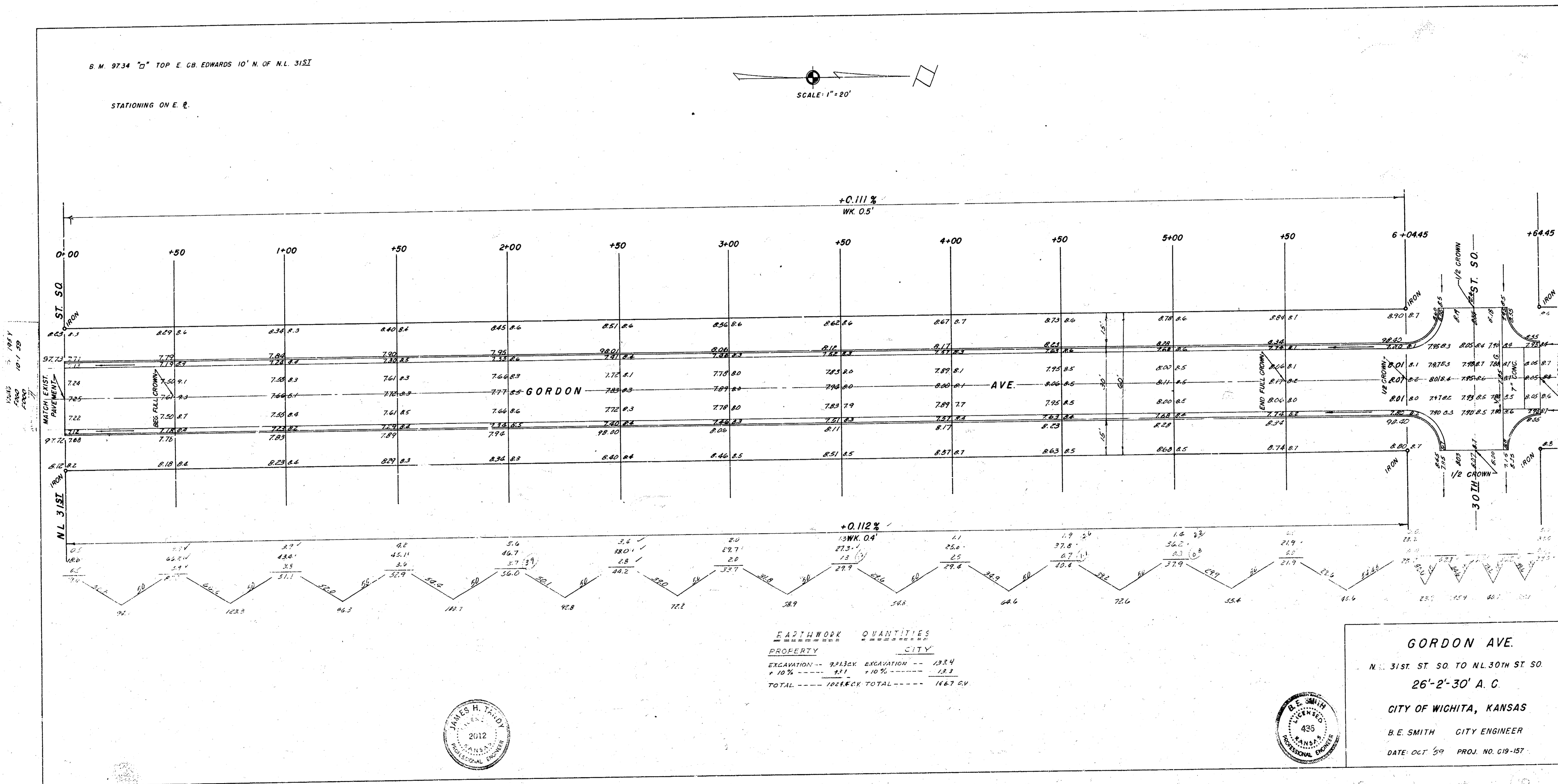
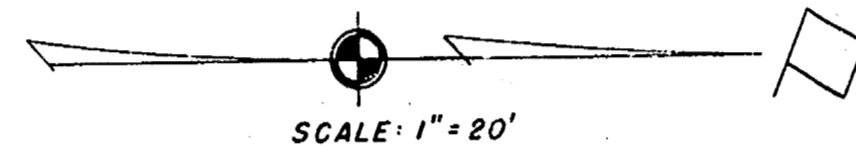


B. M. 9734 "D" TOP E. CB. EDWARDS 10' N. OF N.L. 31ST

STATIONING ON E. E.



EARTHWORK QUANTITIES

PROPERTY	CITY
EXCAVATION -- 7432X	EXCAVATION -- 1224
+ 10% ----- 817	+ 10% ----- 134.2
TOTAL ----- 1616X	TOTAL ----- 1458.2Y



GORDON AVE.
 N. 31ST ST. SO. TO N.L. 30TH ST. SO.
 26'-2'-30' A.C.
 CITY OF WICHITA, KANSAS
 B.E. SMITH CITY ENGINEER
 DATE: OCT '59 PROJ. NO. C19-157