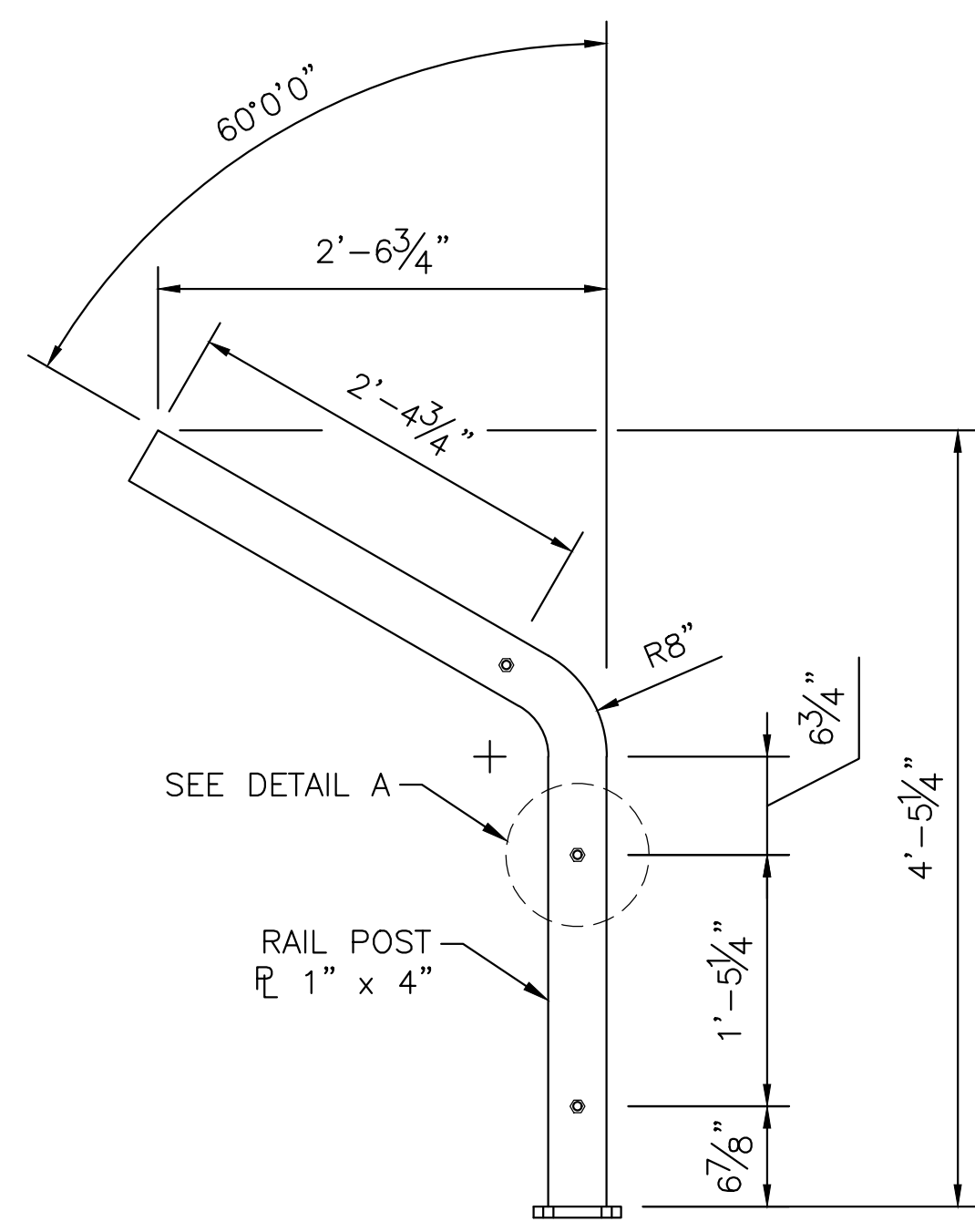
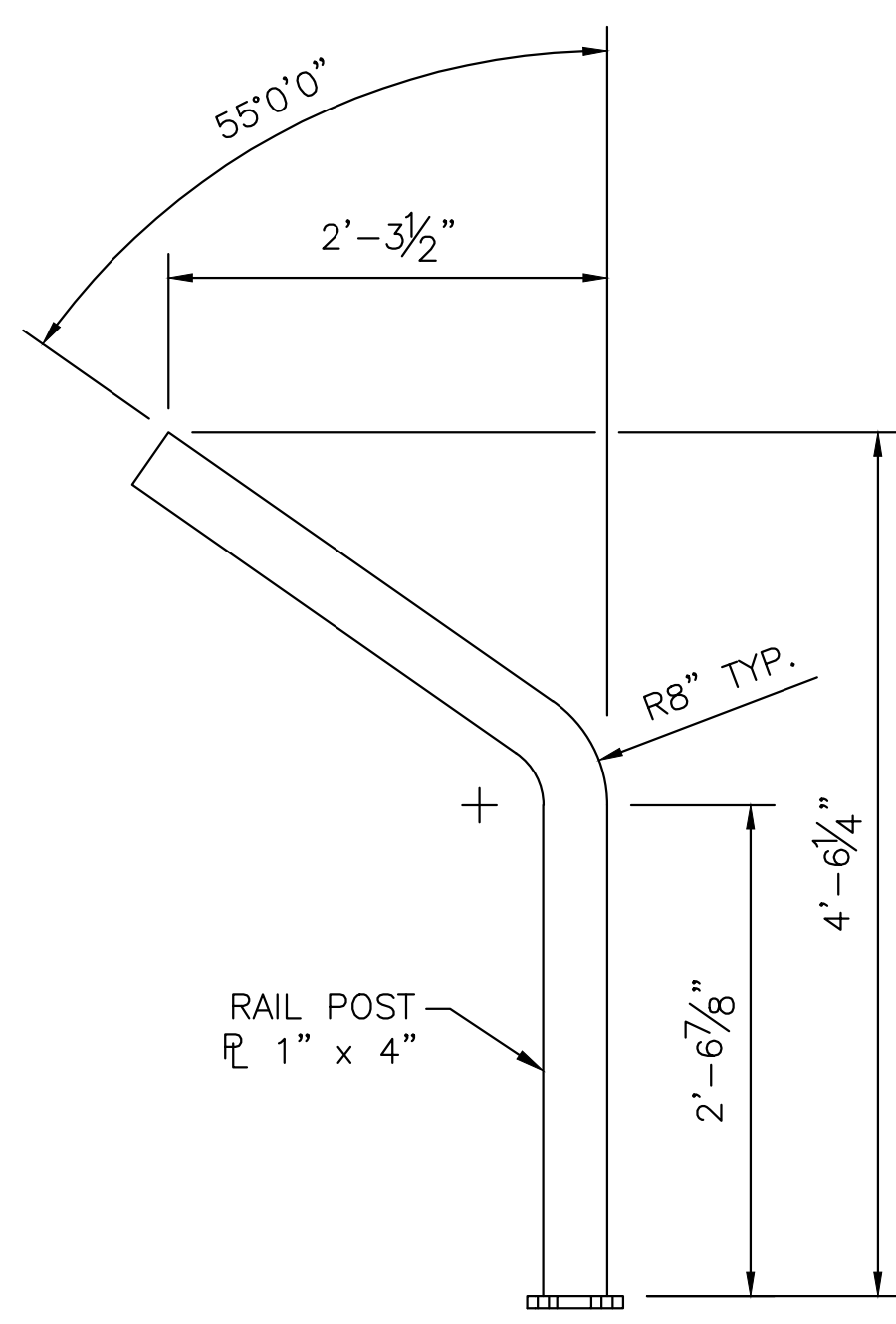


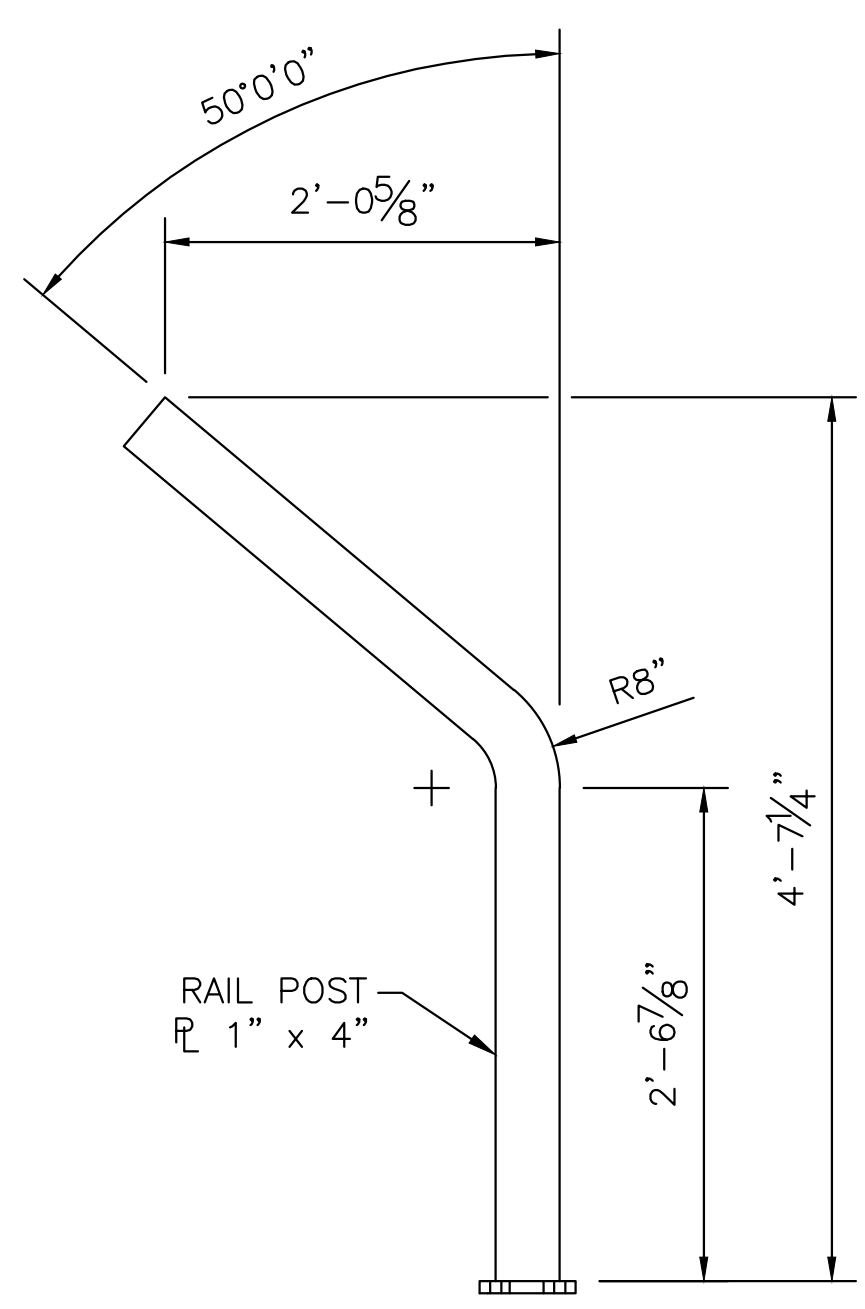
J:\PROJECTS\2023\20231010\431\_COW\_WDC\_BRIDGE REPLACEMENT AT 15TH STREET\100-230431\_CAD\SHOTS\06\_CIVIL\BRIDGE\BRIDGE RAIL\202431\_RAIL POST DETAILS.DWG  
 PLOTTED: Friday, August 01, 2025 @ 02:50PM



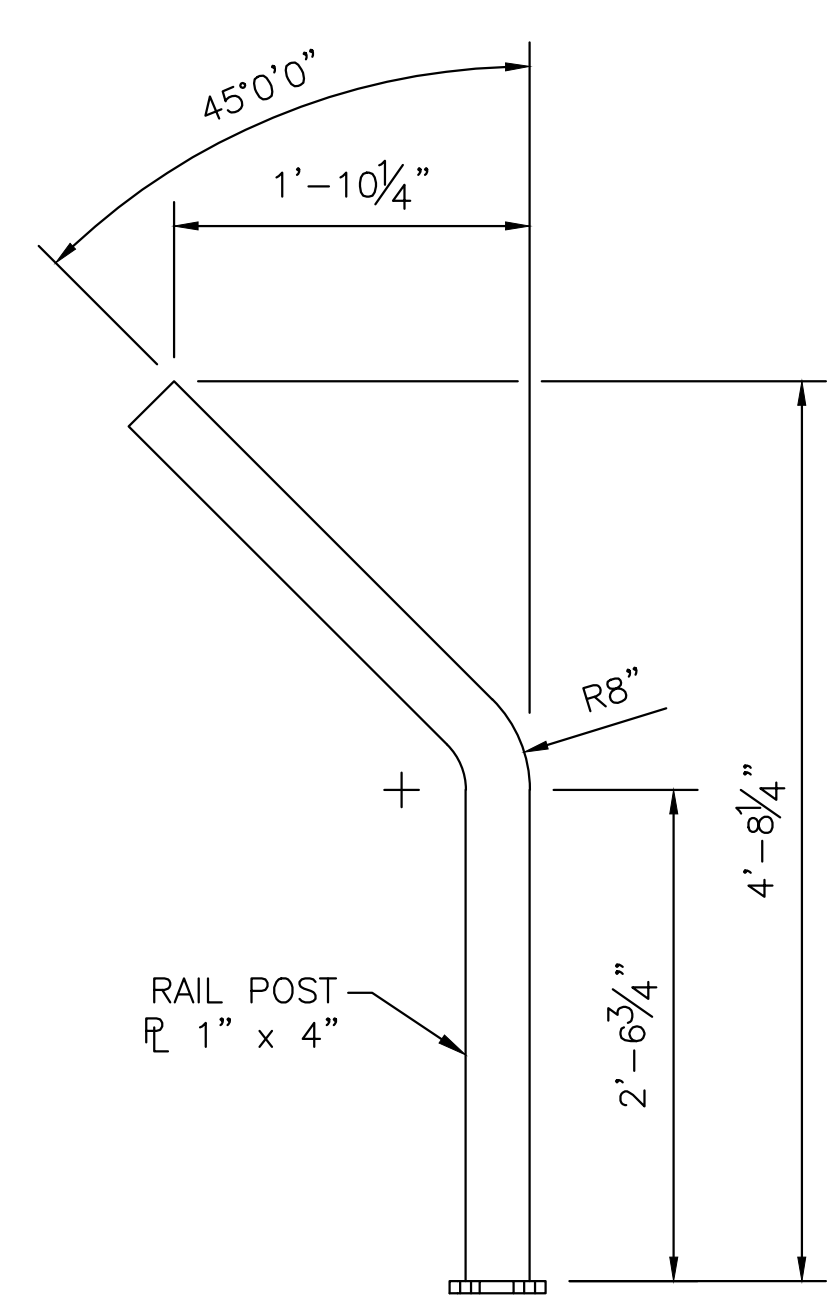
**60A RAIL POSTS**  
 (28 TOTAL REQUIRED)  
 (DRILLED HOLES AND WELDED NUTS ARE PROVIDED ONLY ON POSTS 1, 28, 29 & 32)



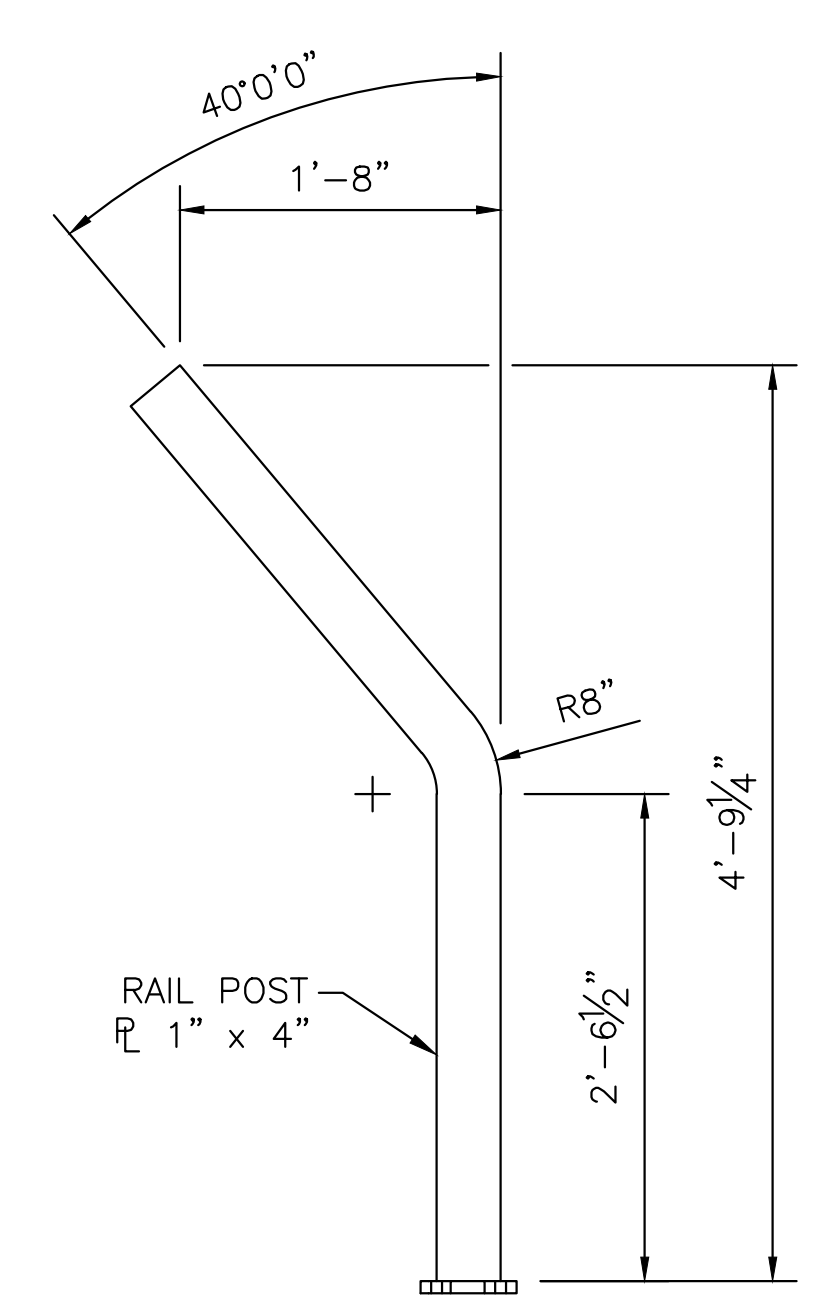
**55B RAIL POSTS**  
 (8 TOTAL REQUIRED)



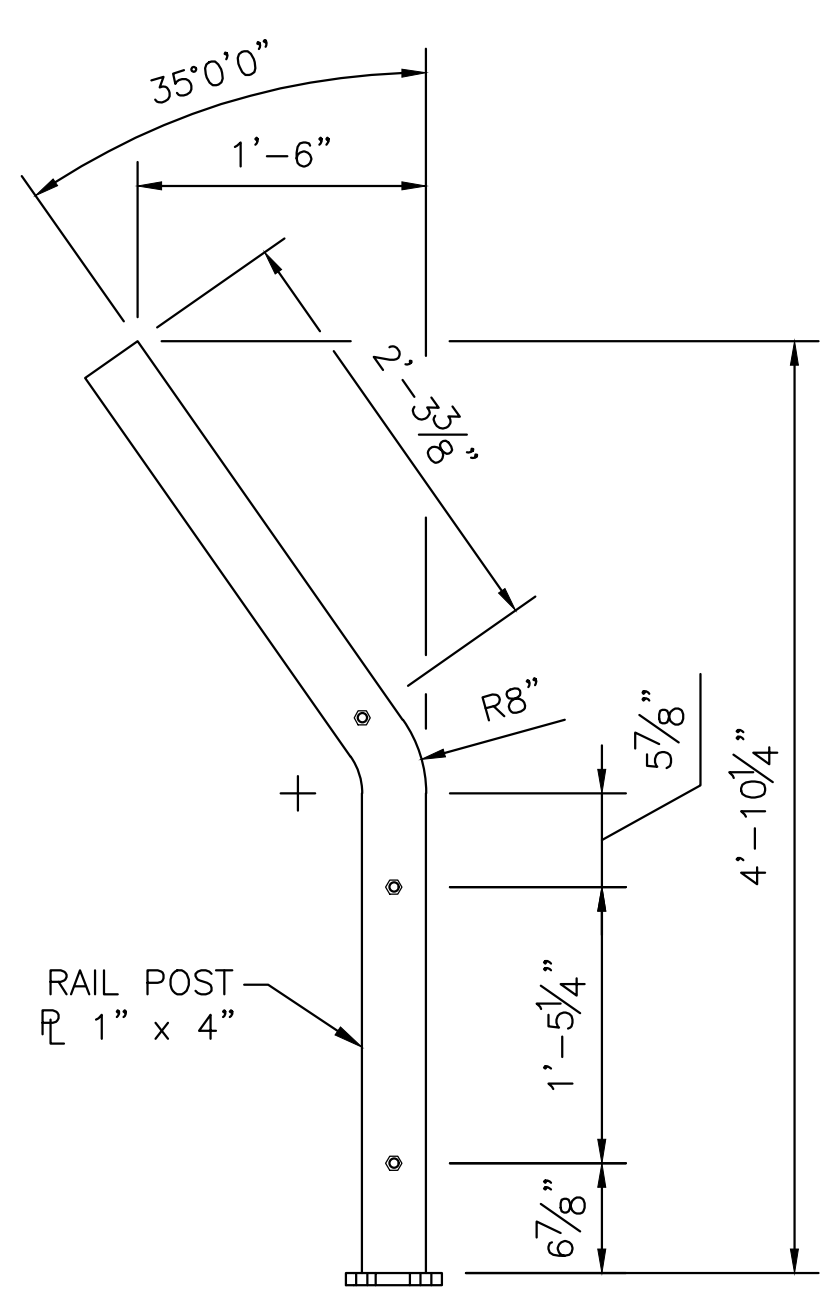
**50C RAIL POSTS**  
 (8 TOTAL REQUIRED)



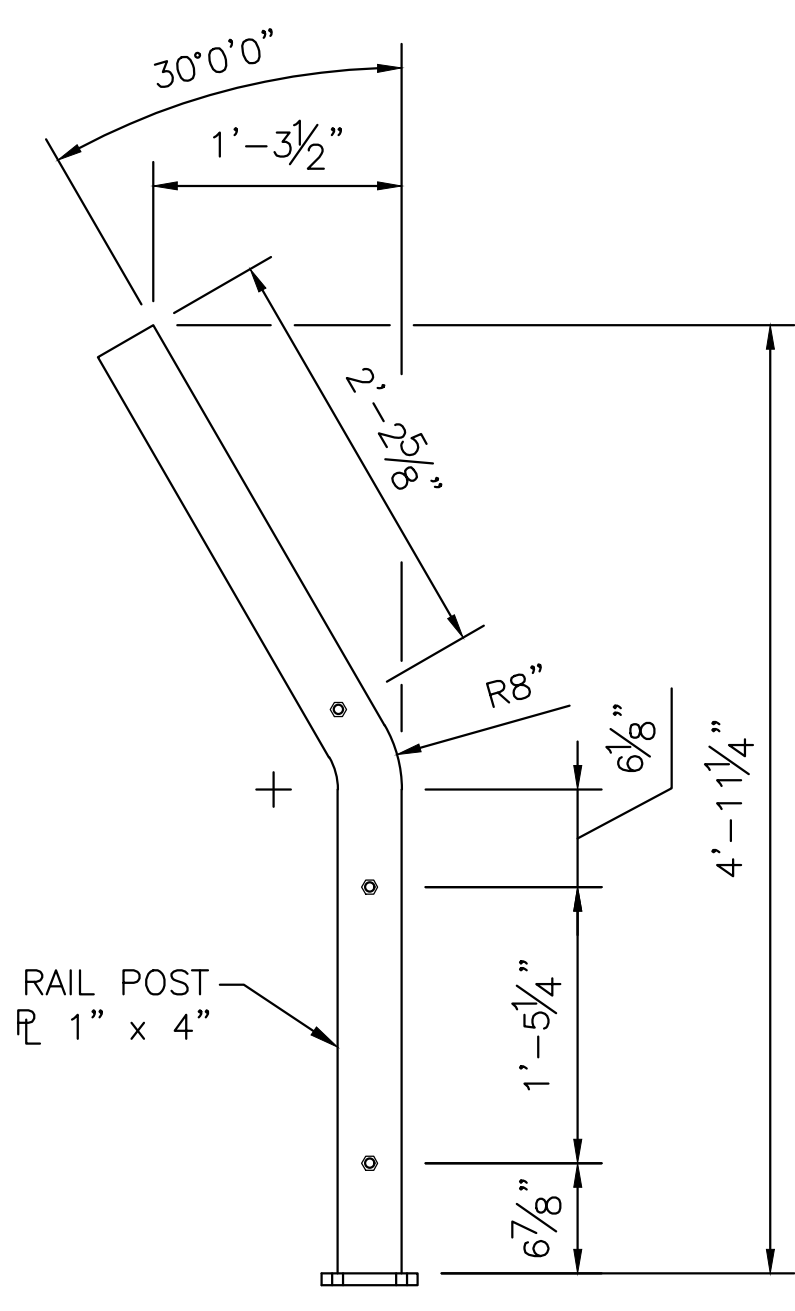
**45D RAIL POSTS**  
 (8 TOTAL REQUIRED)



**40E RAIL POSTS**  
 (8 TOTAL REQUIRED)



**35F RAIL POSTS**  
 (8 TOTAL REQUIRED)  
 (DRILLED HOLES AND WELDED NUTS ARE PROVIDED ONLY ON POSTS 12 & 17)

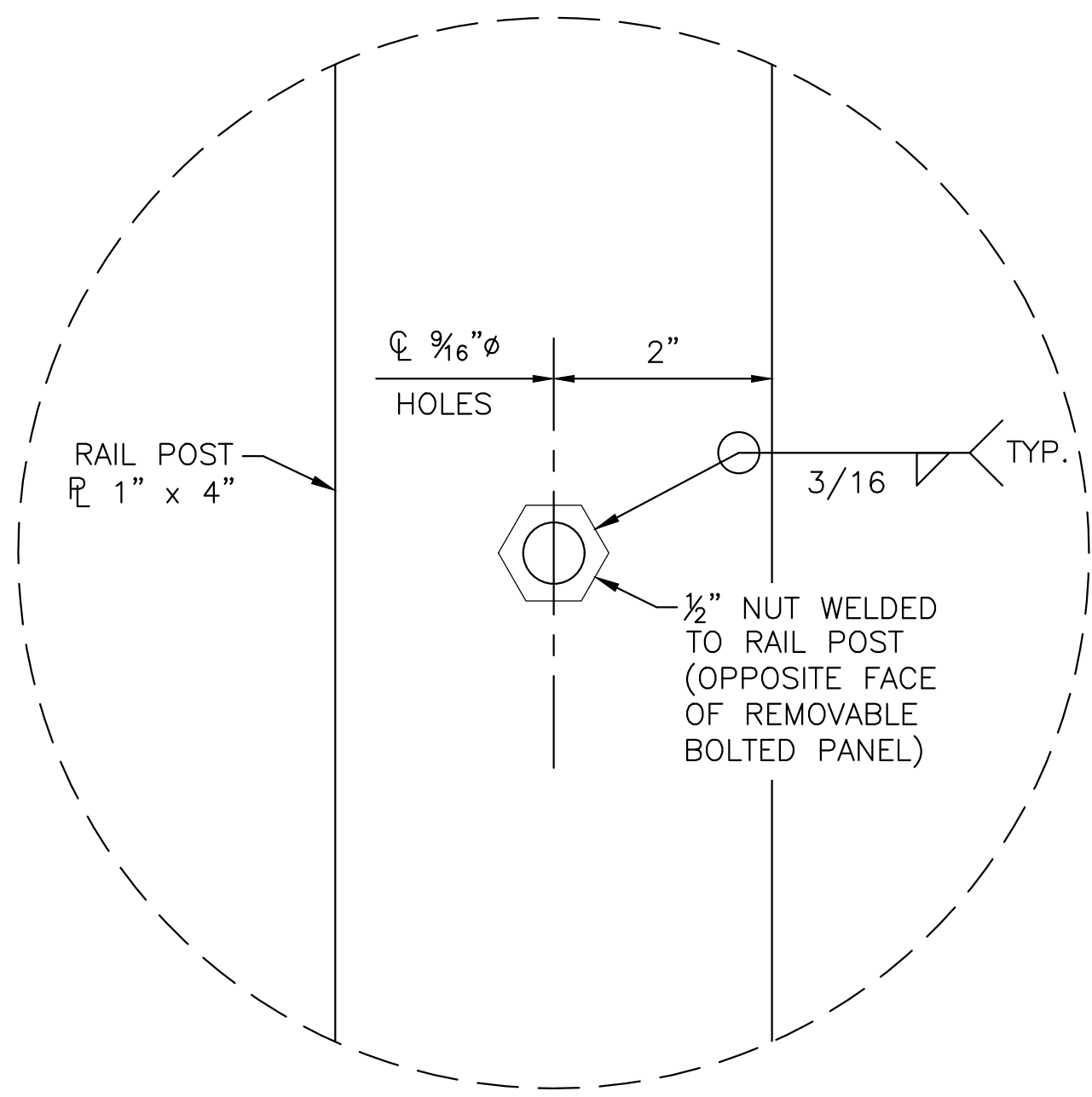


**30G RAIL POSTS**  
 (24 TOTAL REQUIRED)  
 (DRILLED HOLES AND WELDED NUTS ARE PROVIDED ONLY ON POSTS 13 & 16)

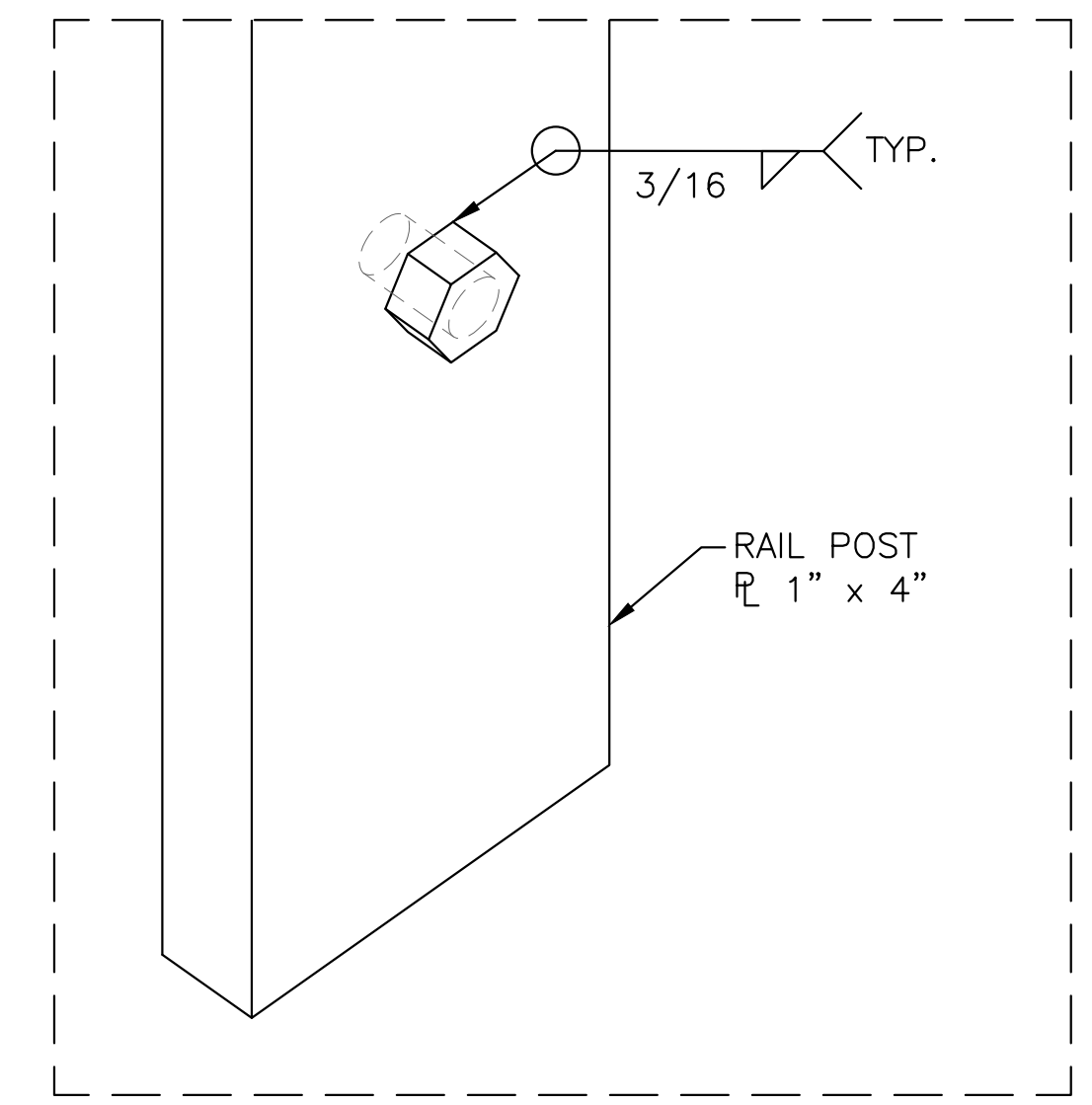
**NOTES:**

1. RAIL BASE PLATE THICKNESSES ARE NOT INCLUDED IN OVERALL VERTICAL DIMENSIONS.
2. CASSETTES SHALL BE MOUNTED FLUSH WITH THE TOP AND END SURFACES OF RAIL POSTS AND SHALL BE INCLUDED ON POSTS AS INDICATED IN THE "COMBINATION RAIL & APPURTENANCES ASSEMBLY TABLE" ON SHEET 56. NOT SHOWN ON THIS DETAIL FOR CLARITY.
3. QUANTITIES SHOWN ON THIS SHEET ARE SUBSIDIARY TO "COMBINATION RAIL". SEE SHEET 59 FOR SUMMARY.

RAIL POSTS			
POST	UNIT WEIGHT (LBS)	QUANTITY	TOTAL WEIGHT (LBS)
60A	77.1	28	2,159.7
55B	74.9	8	598.9
50C	73.2	8	585.5
45D	72.1	8	576.6
40E	71.4	8	570.8
35F	70.9	8	567.6
30G	70.6	24	1,694.9
TOTAL			6,754



**SIDE VIEW**  
 (TYPICAL AT ALL THROUGH-BOLTED LOCATIONS)



**ISOMETRIC VIEW**  
 (TYPICAL AT ALL THROUGH-BOLTED LOCATIONS)

**DETAIL A**



**IMPROVEMENT PLANS FOR**  
**15TH STREET BRIDGE OVER THE**  
**WICHITA DRAINAGE CANAL**  
 WICHITA, KS

**COMBINATION RAIL POST DETAILS**

PROJECT NO.	472-2023-085864	
SCALE	NTS	
DRAWN	DESIGNED	CHECKED
RAM	DMU	JRA
NO.	REVISION	DATE
0	ISSUED FOR CONSTRUCTION	8-1-2025

SHEET NO. 61 OF 114

©2025 MKEC ENGINEERING, INC. ALL RIGHTS RESERVED. WWW.MKEC.COM. THESE DRAWINGS AND THEIR CONTENTS, INCLUDING, BUT NOT LIMITED TO, ALL CONCEPTS, DESIGNS, & DETAILS ARE THE EXCLUSIVE PROPERTY OF MKEC ENGINEERING, INC. (MKEC), AND MAY NOT BE USED OR REPRODUCED IN ANY WAY WITHOUT THE EXPRESS CONSENT OF MKEC.