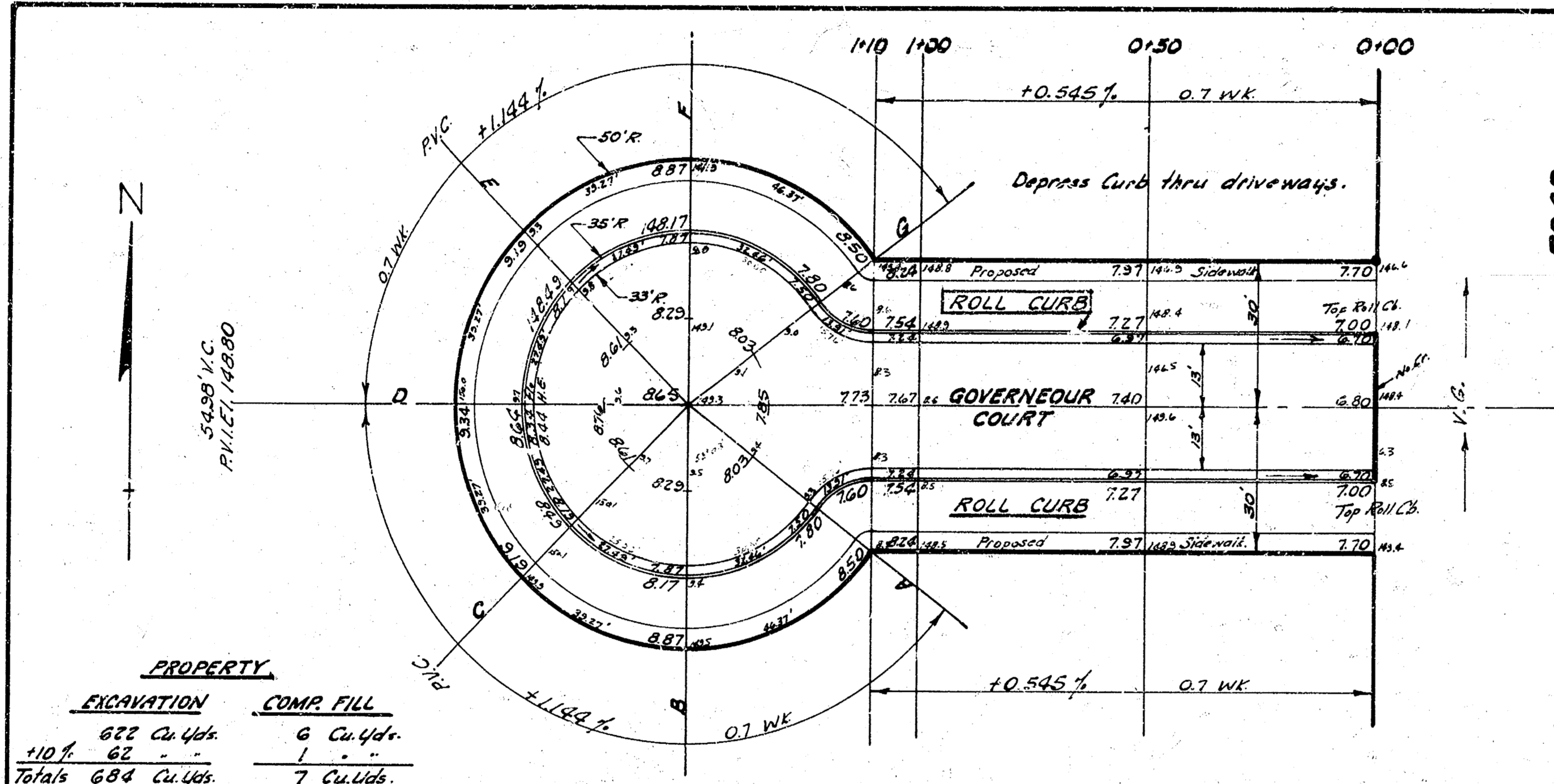


SHIRAZI, MANSOUR
 CIVIL ENGINEER
 11/18/68
 Checked

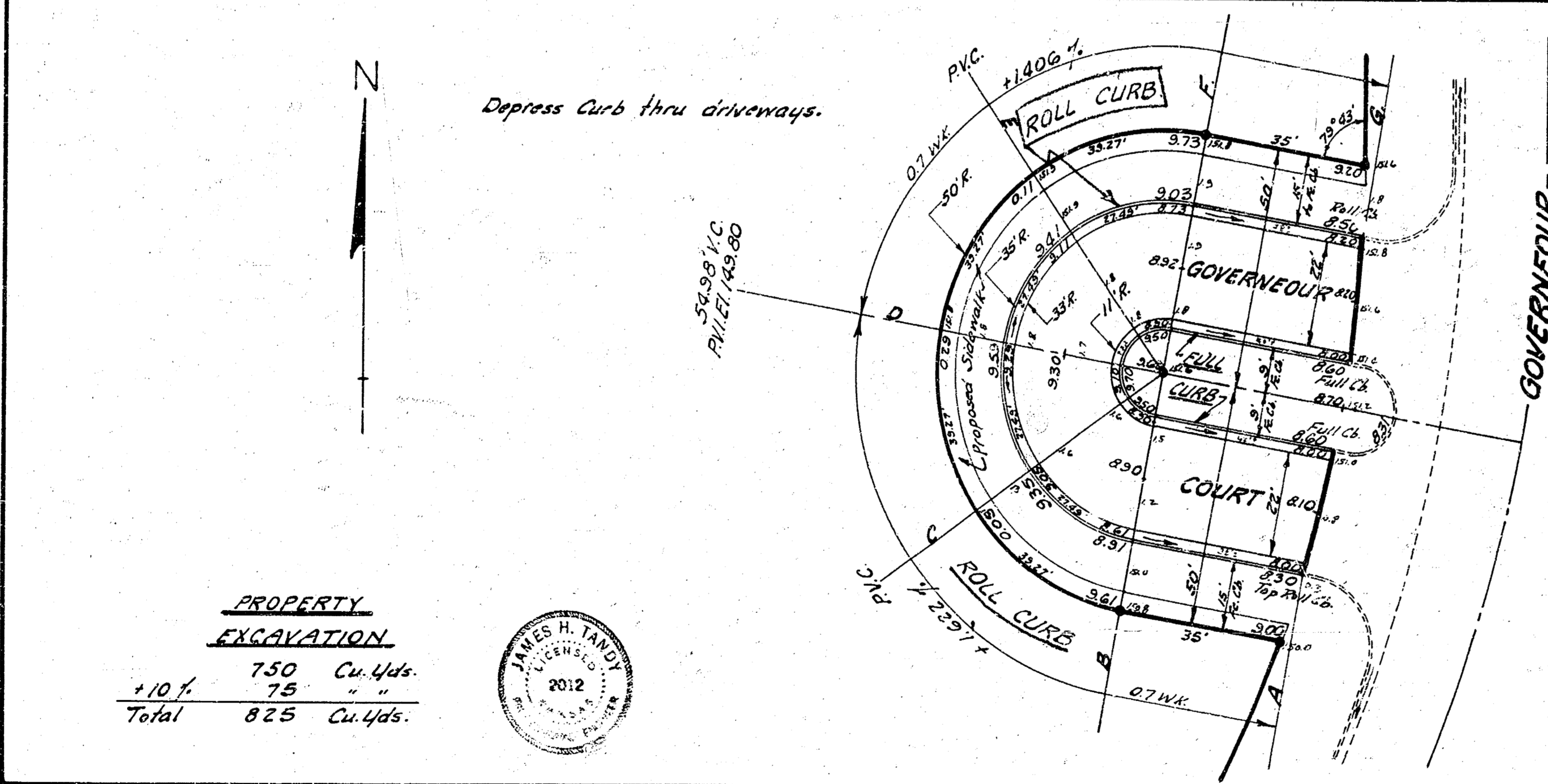


NOTE:
 Contractor to clear right-of-way, grade parking & compact fill for proposed sidewalks on Proj. C18-33 and Proj. C18-45. Sidewalks to be constructed by others.

PROPERTY	
EXCAVATION	COMP. FILL
+10% 622 Cu.Yds.	6 Cu.Yds.
+10% 62	1
Totals 684 Cu.Yds.	7 Cu.Yds.



GOVERNEUR COURT
 From W.L. GOVERNEUR ROAD
 to & including CUL-DE-SAC
 Lots 22 thru 28 Blk. 3, Eastlink Village 2nd Addn.
 26-2-30 A.C.
 Project No. C18-33



PROPERTY	
EXCAVATION	COMP. FILL
+10% 750 Cu.Yds.	6 Cu.Yds.
+10% 75	1
Total 825 Cu.Yds.	7 Cu.Yds.



1/2

GOVERNEUR COURT
 FROM W.L. GOVERNEUR ROAD
 to & including CUL-DE-SAC
 Lots 19, 20 & 21 Block 3
 Eastlink Village 2nd Addn.
 22-2-26 A.C.
 B.E. SMITH CITY ENGINEER
 CITY OF WICHITA KANSAS
 Date: APRIL 1968
 Project No. C18-45

