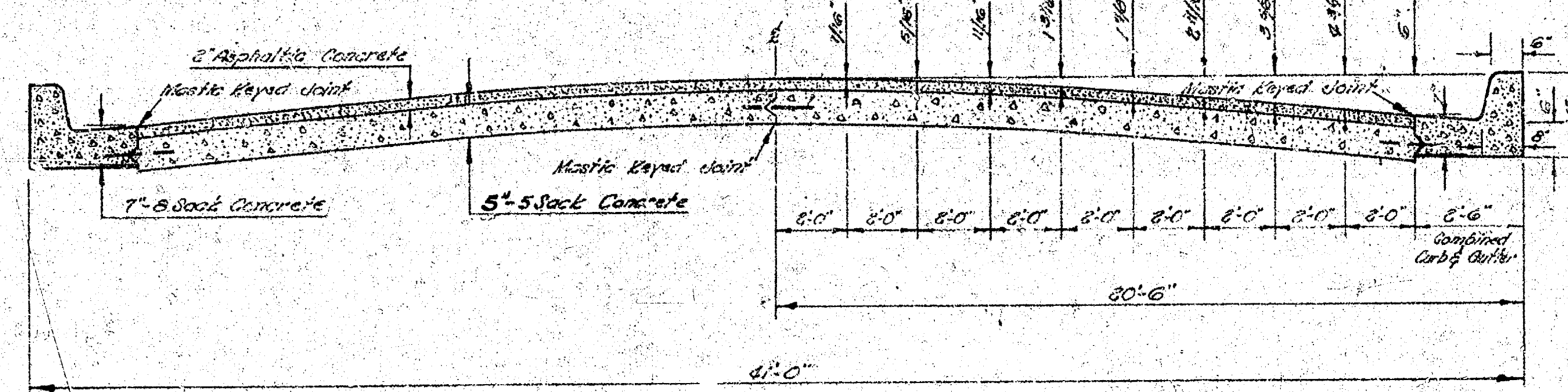
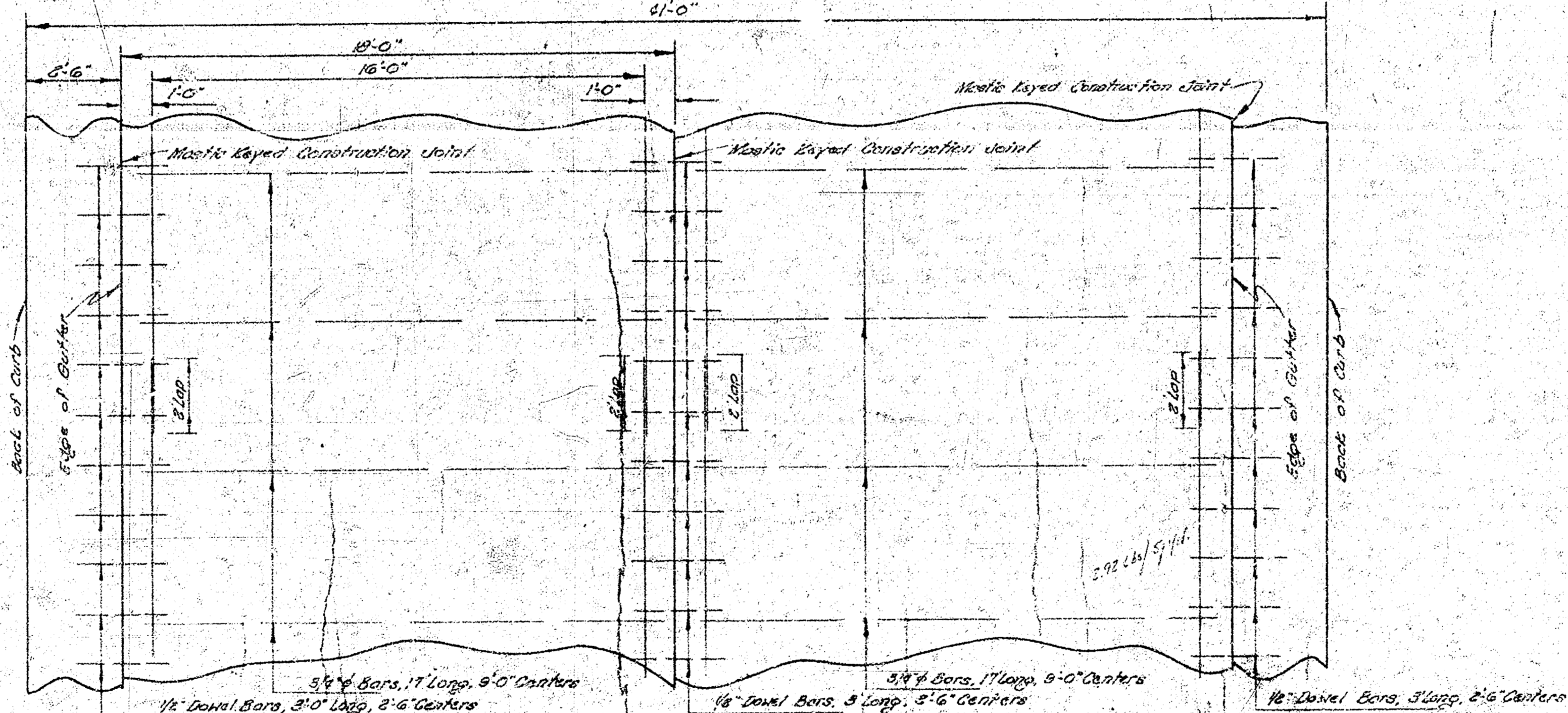


GOVERNEOUR ROAD
FROM N.L. ZIMMERLY ST. TO S.L. BAYLEY ST.
B.E. SMITH CITY ENGINEER CITY OF WICHITA KANSAS

PROJECT NO. C16-43

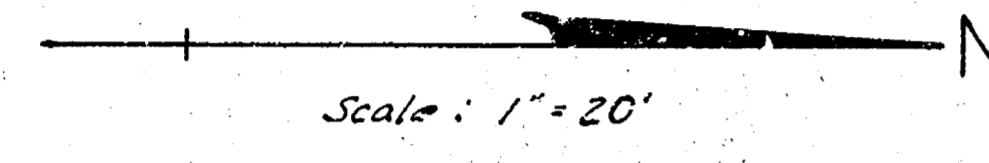


TYPICAL SECTION
NOT TO SCALE



STEEL PATTERN
 USE 3/4" BARS EXCEPT WHERE NOTED
 NOT TO SCALE

Surveyed by B.E. Smith
 Plan 11-1-1911
 Checked



B.M. 150.31 'R' in Ritchie top curb N end
radius on N.W. cor. Gouverneur & Bayley.

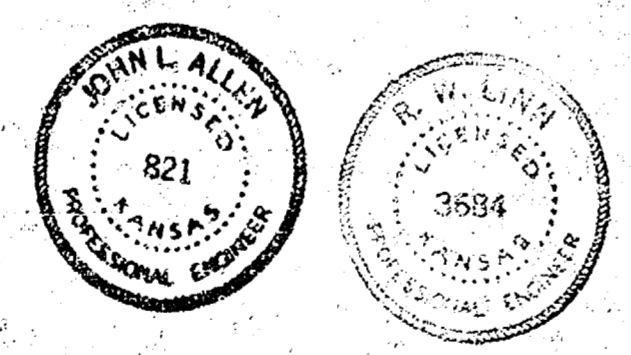
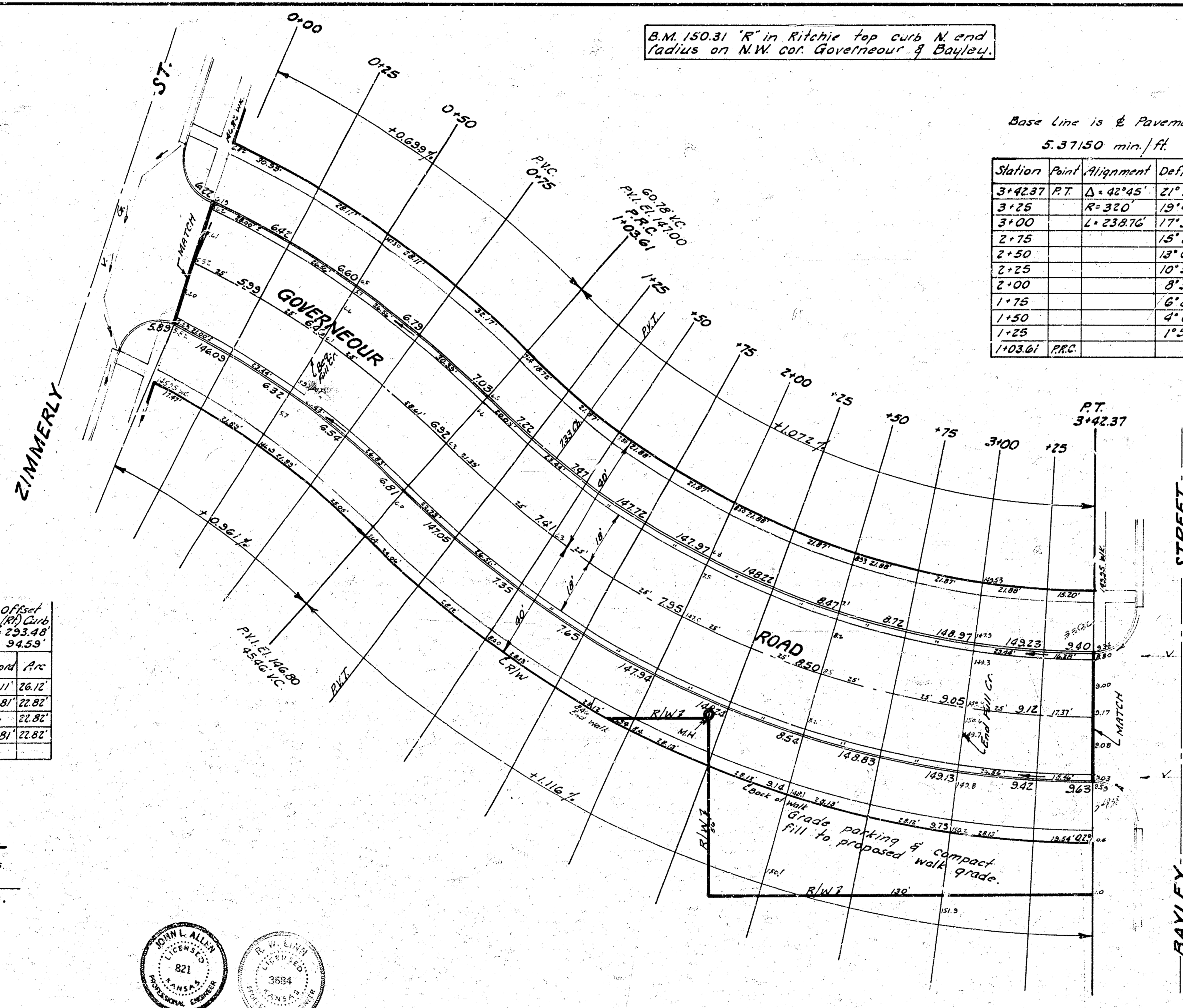
Base Line is to Pavement
5.37150 min./ft.

Station	Point	Alignment	Deflection	Chord	Arc	Chord	Arc
3+42.37	P.T.	$\Delta = 42^\circ 45'$	$21^\circ 22' 30''$	15.86	15.96	18.88	18.88
3+25		$R = 320'$	$19^\circ 48' 10''$	22.81	22.81	27.18	27.18
3+00		$L = 238.76'$	$17^\circ 34' 53''$	-	-	-	-
2+75			$15^\circ 20' 36''$	-	-	-	-
2+50			$13^\circ 06' 19''$	-	-	-	-
2+25			$10^\circ 52' 02''$	-	-	-	-
2+00			$8^\circ 37' 45''$	-	-	-	-
1+75			$6^\circ 23' 28''$	-	-	-	-
1+50			$4^\circ 09' 11''$	22.81	22.81	27.18	27.18
1+25			$1^\circ 54' 54''$	15.52	15.52	23.26	23.26
1+03.61	PRC						

Base Line is to Pavement
5.34697 min./ft.

Station	Point	Alignment	Deflection	Chord	Arc	Chord	Arc
1+03.61	PRC	$\Delta = 18^\circ 28'$	$9^\circ 14'$	31.09	31.10	26.11	26.12
0+75		$R = 321.48'$	$6^\circ 41' 00''$	27.17	27.18	22.81	22.82
0+50		$L = 102.61'$	$4^\circ 27' 20''$	-	27.18	-	22.82
0+25			$2^\circ 13' 40''$	27.17	27.18	22.81	22.82
0+00	RC						

	EXCAVATION	COMP. FILL
	256 Cu. Yds.	32 Cu. Yds.
+10%	26	3
Totals	282 Cu. Yds.	35 Cu. Yds.



GOVERNEUR ROAD
From N.L. ZIMMERLY ST.
to S.L. BAYLEY STREET
36-2-40 Asph. Conc.
B.E. SMITH CITY ENGINEER
CITY OF WICHITA KANSAS
Date: APRIL 1968

Project No. C16-43

2/3