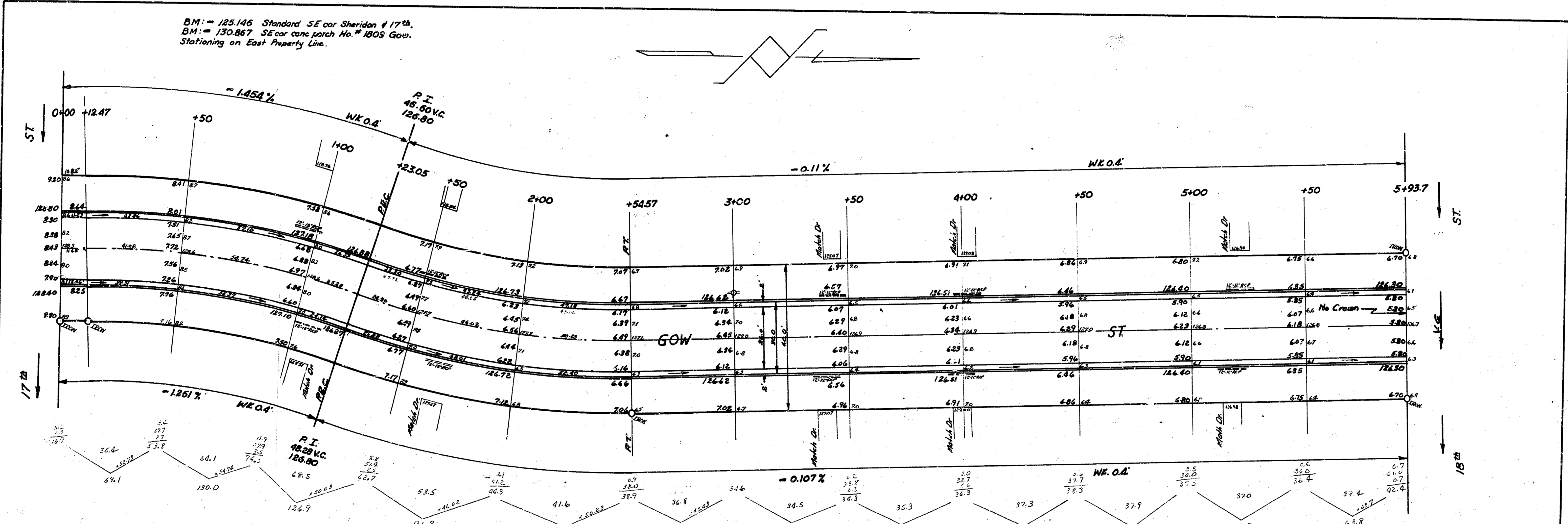


BM: = 125.146 Standard SE cor Sheridan & 17th
 BM: = 130.867 SE cor canyorch No. 1 BOS Gov.
 Stationing on East Property Line.



Survey Made
 Plans Made
 Exc. Made
 Checked

Curve Data: 6' offset from E. ch. Stationing on E. Prop. Line
 R=325.79 Sta. 0+12.47 to 1+23.05 R=367.79 Sta 1+23.05 to 2+54.57

STATION	Arc Length	Deflection Angle	Total Deflection	Chord Length 6' offset E. ch.	Chord Length 6' offset W. ch.
0+12.47					
+50	38.40	3° 23' 39"	3° 23' 39"	38.58	43.55
+100	51.42	4° 31' 18"	7° 54' 57"	51.97	57.99
+123.05	23.70	2° 05' 03"	10° 00' 00"	23.69	26.75
+150	24.31	2° 08' 58"	2° 08' 58"	24.90	23.30
+200	48.80	3° 46' 04"	5° 54' 02"	49.76	43.19
+254.57	33.27	4° 08' 58"	10° 00' 00"	33.23	27.15

Excavation Totals
 Property - C. H. 0
 95.74
 110.74 95.7
 105.57 95.7

GOW ST.
 NL 17th St. to SL 18th St.
 26- 2- 30 AC.
 CITY OF WICHITA, KANSAS
 B. E. SMITH CITY ENGINEER
 FEB. 1957 PROJ. NO. C14-373

