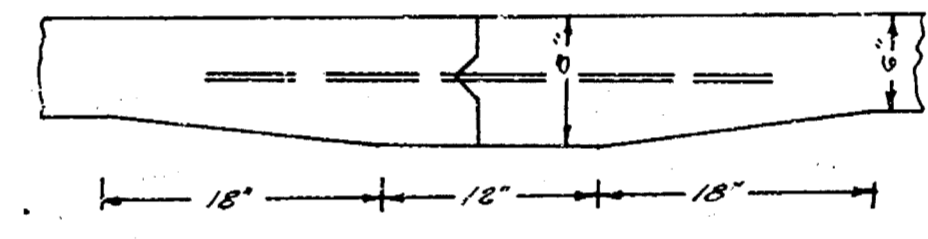
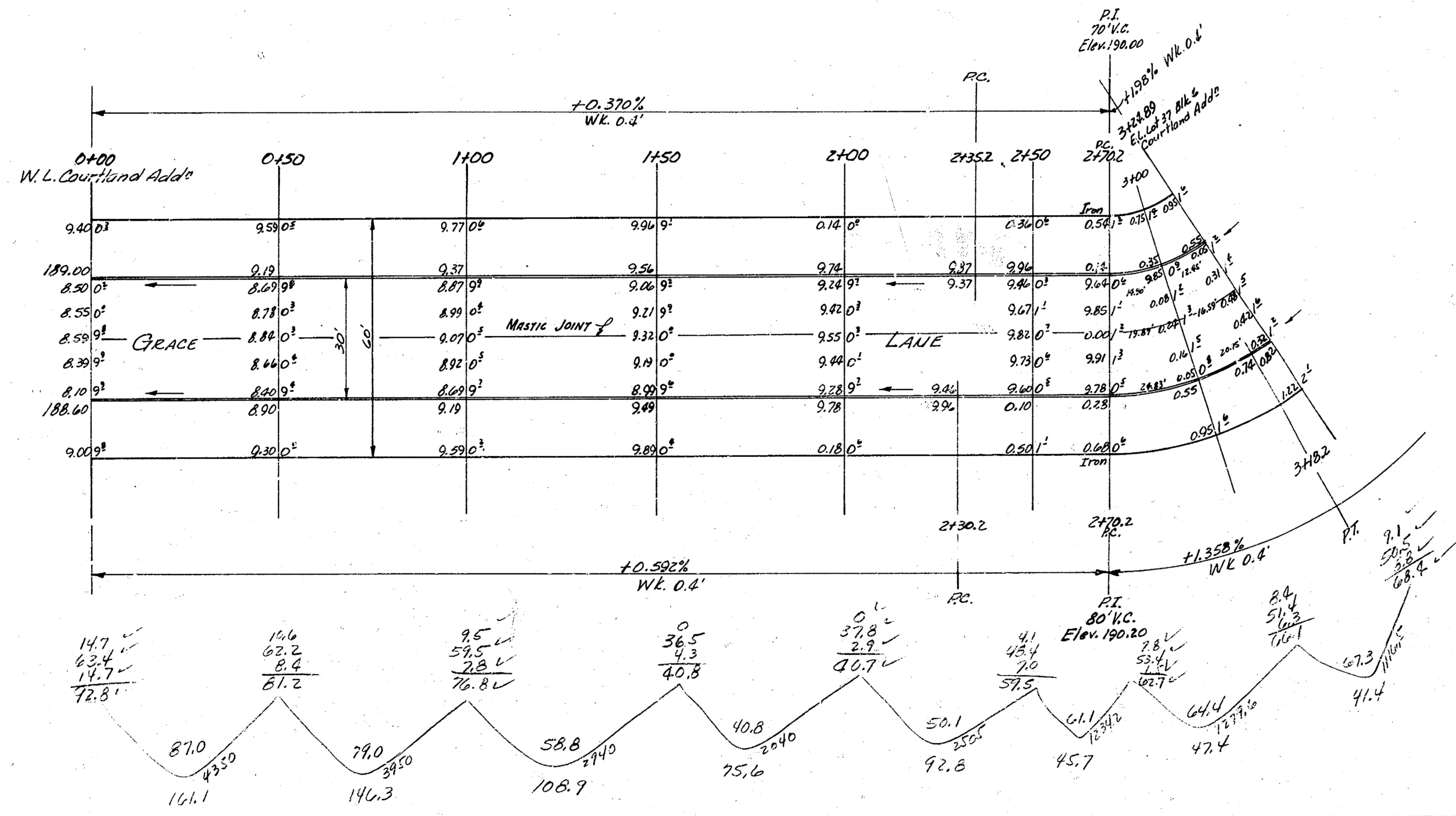


B.M. 198.71 S.S. Cor-Cork P.O. on S.S. of Stables East of Curve on Grace Lane  
 B.M. 199.19 Spike E. Side RR N.S. 9° & W.S. Woodtown  
 Chaining From W. to E. & From S. to N. on S. & E. B.

Excav.  
 Prop 719.2 C. 7.4  
 410.76 71.9  
 Total 791.1 cu. yds

Quantity Abstract  
 Blk. 6  
 Plan C.C.C.  
 Checked 1/27



Use 1/2" p. bars, 3' long on 2' 6" centers  
 DETAIL OF MASTIC JOINT

Sta. on S.C.	E. Arc	Chord's half S.C.	Chord's half N.C.	Deflection	Total Deflect.
2+20.2 RC	19.87'	20.70'	12.85'	9° 29' 08"	9° 29' 08"
3+18.2 P.M.E. S.C.	12.13'	16.35'	2.88'	5° 42' 36"	15° 11' 44"
3+20.49 P.L. W.P.	6.44'	6.01'	2.90'	2° 07' 46"	17° 29' 30"
4+11.58 P.T.	57.79'	74.71'	36.12'	27° 35' 45"	45° 05' 15"



GRACE LANE  
 W.L. COURTLAND ADD' TO E.L. LOT 37  
 BLK 6 COURTLAND ADD'  
 30' CONC. & CB.  
 CITY OF WICHITA, KANSAS  
 B.E. SMITH CITY ENGINEER  
 MAY 1954 Proj. No. C 14-59