

STREET IMPROVEMENTS IN GRAF - GOLDSTON 2ND ADDITION BELLA VISTA COURT

PROJECT NO: 472-76-245-82653-000-000-001

INDEX CODE: 763789

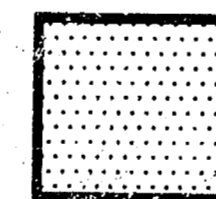
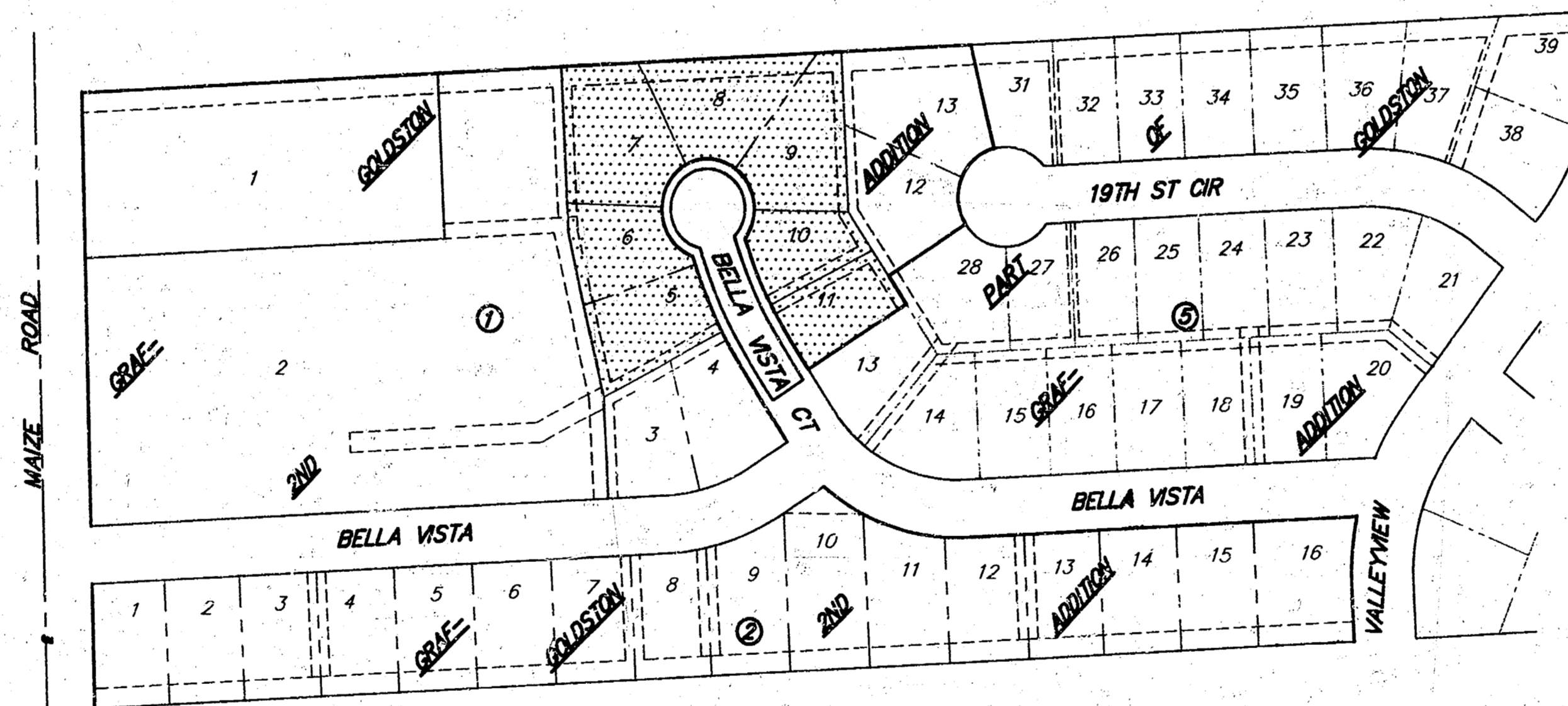
GENERAL NOTES

1. Traffic will not be affected by construction of this project.
2. Underground utility service lines and overhead utility pole lines are to be adjusted by others if necessary prior to construction unless the plans specifically call for their adjustment by the Contractor or by their owner. Existing utilities and their location, as shown on the plans, represent the best information obtainable for design. The Contractor will be required to work around existing utilities within the right-of-way which do not conflict with proposed construction.
3. Rubble from the removal of miscellaneous structures and excess excavation which is to be wasted shall be disposed of on sites to be provided by the Contractor. These sites shall be approved by the Engineer as to suitability, appearance and site location. Locations that, in the opinion of the Engineer, will leave an unsightly appearance will not be approved.
4. Trees and shrubs in public right-of-way which are in direct conflict with proposed new construction shall be removed by the Contractor with the Engineer's approval. Trees and shrubs which are not in direct conflict with proposed new construction shall be saved and protected from damage.
5. The Contractor shall give all property owners and/or tenants of developed property directly abutting the construction of this project a minimum of ten (10) days advance notice prior to start of construction.
6. The Contractor shall be responsible for preserving property irons. The Contractor will be required to re-establish any property irons which are damaged or destroyed by his construction operations. Such irons shall be re-established by a licensed land surveyor in accordance with state laws.
7. Contractor will be required to provide a minimum notice of twenty-four (24) hours to utility companies prior to starting any excavation as follows:
Kansas One-Call 687-2470
8. The Contractor shall grade disturbed areas, prepare for planting, and seed with annual rye grass @ 2#/1000 S.F. (or other approved temporary seeding).
9. The Contractor shall be responsible for preserving property irons. The Contractor will be required to re-establish any property irons which are damaged or destroyed by his construction operations. Such irons shall be re-established by a licensed land surveyor in accordance with state laws.
10. Limits of earthwork shall match existing ground elevations at the right-of-way line unless otherwise noted on the plans with a new finished grade elevation. When a new finished grade elevation is shown, the earthwork shall extend one foot beyond the right-of-way line and then sloped up or down using permissible slopes to match the existing ground surface.
11. Contractor shall give property owners abutting this project, whose yards will be lower than the new finished grade elevations at the right-of-way line, an opportunity to utilize excess excavated material from the project to regrade their yards to drain to the new pavement. Contractor will be required to dump and spread the excess material as required by the specifications when requested by the property owner. The Contractor shall ascertain that a dirt order form has been properly executed by the property owner before any such excess material is delivered to such properties.

EARTHWORK SUMMARY

EXCAVATION = 1.5 C.Y.
LOOSE FILL = 576.8 C.Y.
COMP. FILL = 471.6 C.Y.

TOTAL PROJECT LENGTH = 358 L.F.



IMPROVEMENT DISTRICT



Scale 1" = 150'

INDEX OF SHEETS

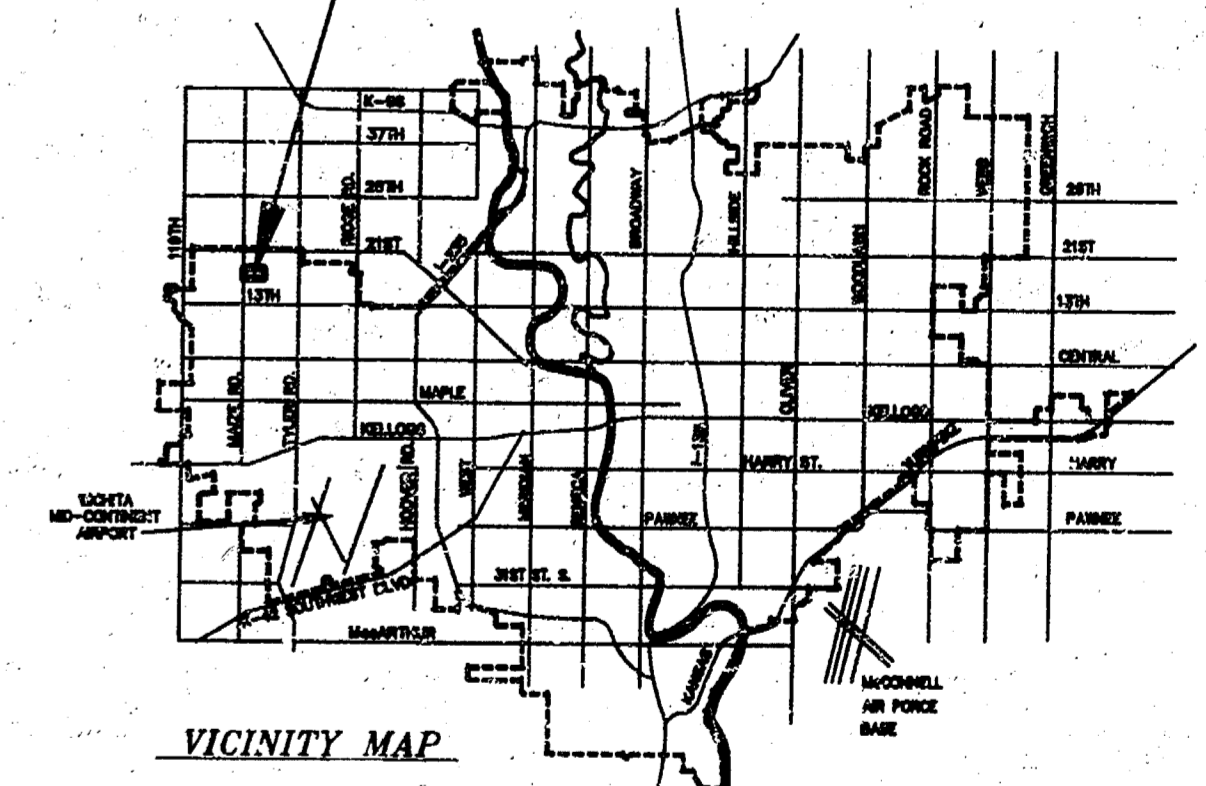
1. TITLE SHEET
2. 29' TYPICAL PAVEMENT SECTION
3. BELLA VISTA STREET PLAN
4. EARTHWORK CROSS-SECTION

BENCH MARK:

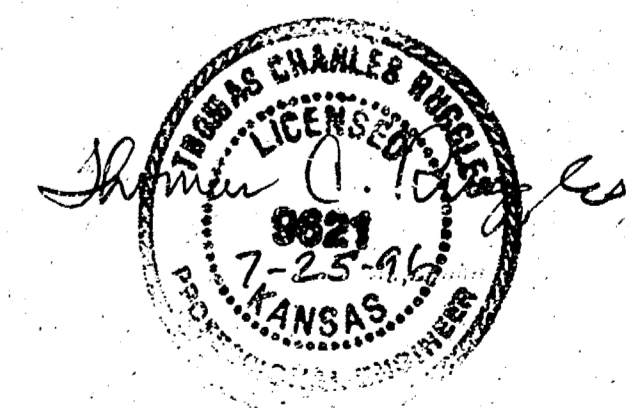
City of Wichita Disc 64' East & 99' South of centerlines of Maize Road and 21st Street North. Elev. 164.30

- "□" Cut in top of curb at Southwest corner of E-W sidewalk at West Towne Baptist Church. Elev. 164.92
- "□" Cut on top of curb at northwest corner, Lot 31, Block 1, Graf-Goldston Addition. Elev. = 157.96
- "□" Cut on top of curb at southwest corner, Lot 59, Block 1, Graf-Goldston Addition. Elev. = 158.16

PROJECT LOCATION



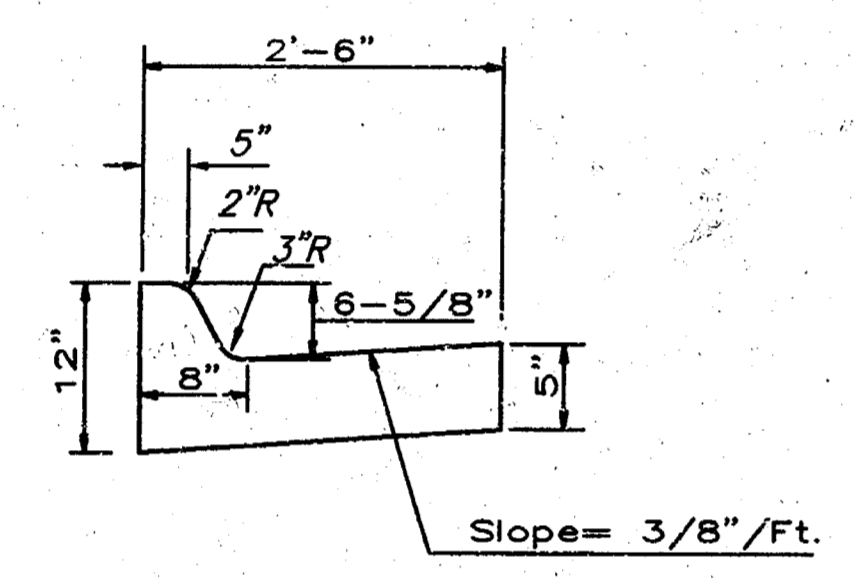
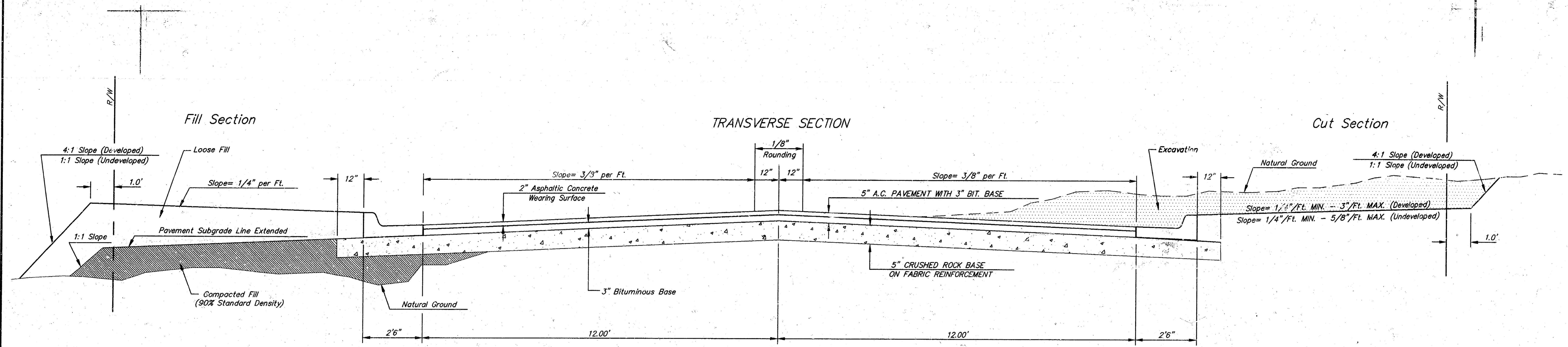
VICINITY MAP



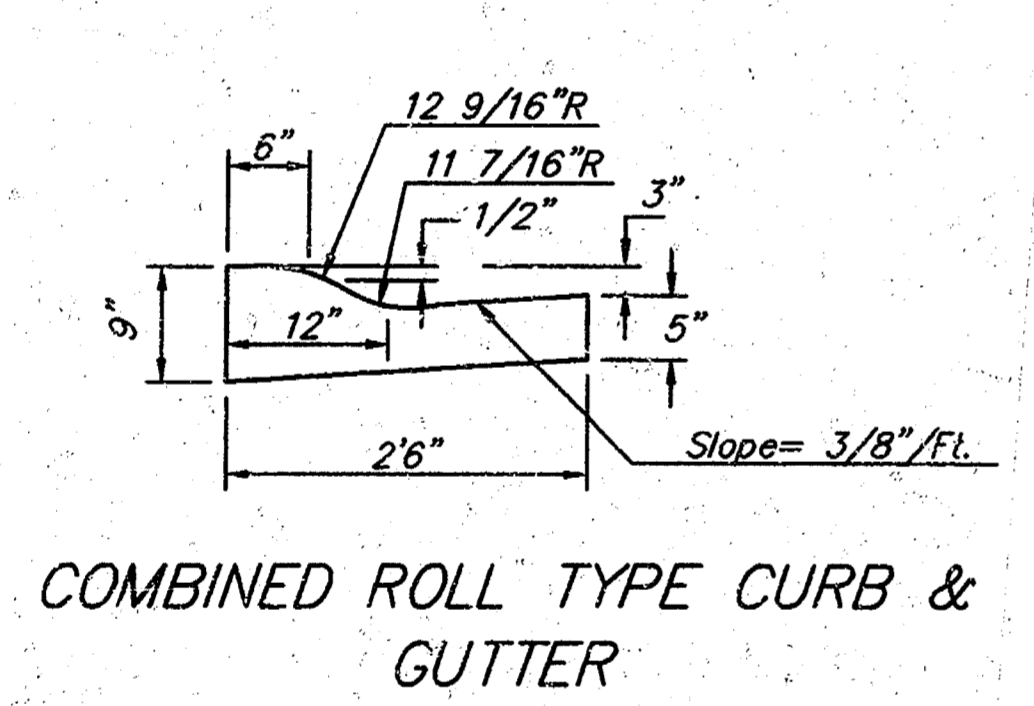
CITY OF WICHITA, KANSAS
MICHAEL E. LINDEBAK - CITY ENGINEER

SRB 324 NORTH MAIN 316-264-8008
WICHITA KANSAS 67203 FAX 264-4021
SAVOY, RUGGLES & BOHM, P. A.
ENGINEERING & SURVEYING

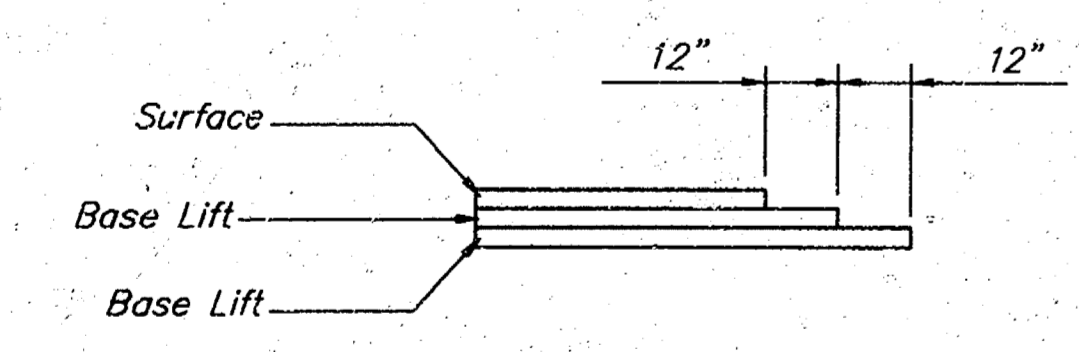
TYPICAL 29' B-B PAVEMENT DETAILS



COMBINED CURB & GUTTER



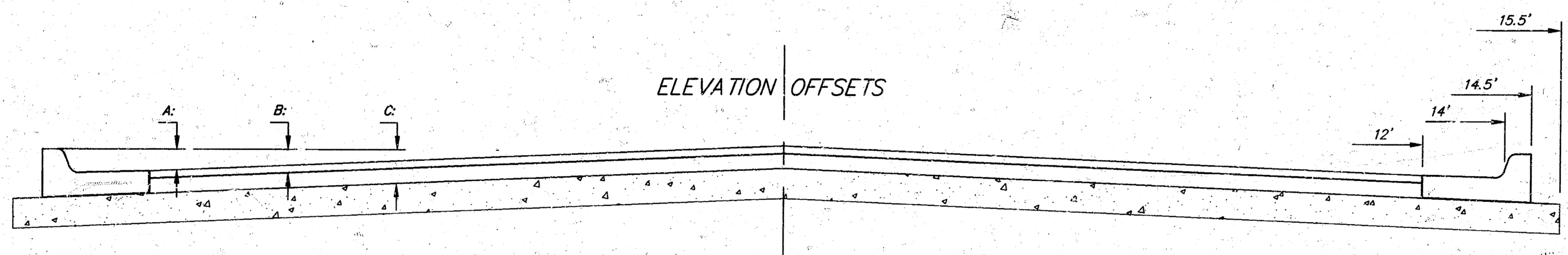
COMBINED ROLL TYPE CURB & GUTTER



TRANSVERSE CONSTRUCTION JOINTS

Transverse construction joints shall be constructed in flexible base pavements at locations where pavement joins existing flexible base pavement as shown by the detail. All costs associated with the construction of the transverse joint shall be included in the bid price for Square Yards 5" ASPHALTIC CONCRETE (3" BITUMINOUS BASE).

ELEVATION OFFSETS



GENERAL NOTES

- FABRIC BASE REINFORCEMENT SHALL BE B X 110C GEOGRID AS MANUFACTURED BY TENSAR CORPORATION OR APPROVED EQUAL. FABRIC BASE REINFORCEMENT SHALL BE INSTALLED IN ACCORDANCE WITH MANUFACTURER'S RECOMMENDATIONS. CRUSHED ROCK SHALL BE UNIFORMLY GRADED FROM 1-1/2" MAXIMUM SIZE TO NOT MORE THAN 10% PASSING A NO. 200 SIEVE. ROCK QUALITY SHALL BE THE SAME AS SPECIFIED FOR COARSE AGGREGATE FOR CONCRETE MIXES.
- ROCK BASE IS TO BE COMPACTED AND SMOOTHED WITH A STEEL FACED ROLLER PRIOR TO PLACEMENT OF ASPHALT. TACK COAT WILL NOT BE APPLIED TO ROCK BASE.
- A TACK COAT OF EMULSIFIED ASPHALT (SC-1H OR CSS-1H) SHALL BE APPLIED AT AN APPROXIMATE RATE OF 0.05 GALLONS PER SQUARE YARD BETWEEN EACH LIFT OF ASPHALTIC MATERIAL.
- BITUMINOUS BASE AND ASPHALTIC CONCRETE WEARING SURFACE SHALL BE PLACED WITH A LAYDOWN MACHINE HAVING AUTOMATIC CONTROLS FOR LINE AND GRADE.
- CONSTRUCTION JOINTS IN EACH LIFT SHALL BE STAGGERED A MINIMUM DISTANCE OF ONE (1) FOOT FROM JOINTS IN PRECEDING LIFTS AND PLACED SO THAT A JOINT WILL BE CONSTRUCTED ON THE CENTERLINE OF THE TOP LIFT.
- THE ASPHALTIC CONCRETE PAVEMENT BETWEEN THE COMBINED CURB AND GUTTER SHALL BE PAID AS SQUARE YARDS OF 5" ASPHALTIC CONCRETE (3" BITUMINOUS BASE).

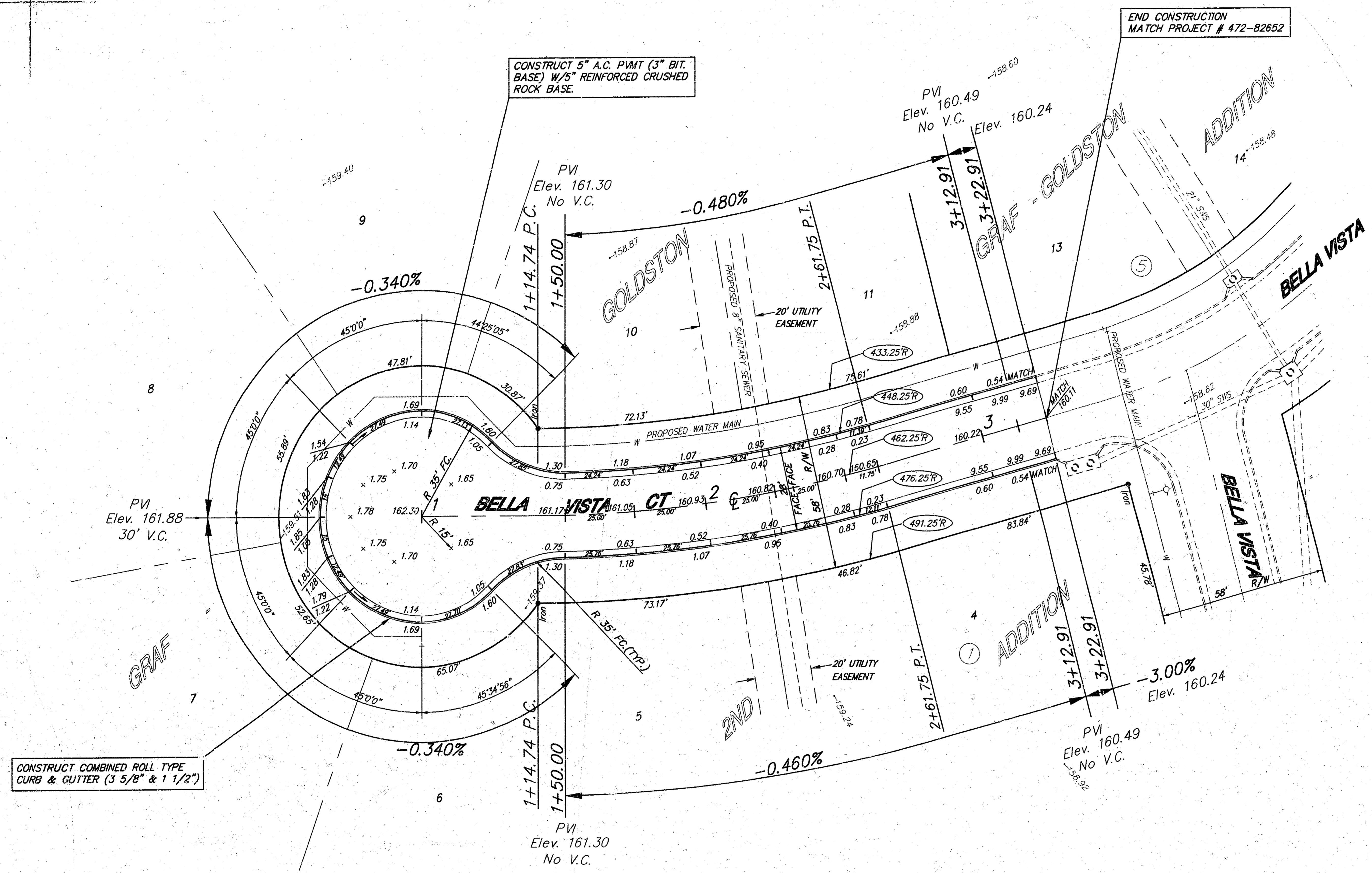
CRUSHED ROCK GRADATION REQUIREMENTS

Percent of Aggregate Retained	% Retained
2-1/2"	0
3/4"	20 to 60
#4	50 to 80
#40	80 to 94
#200	90 to 98

Rock quality shall conform to the requirements specified by the KDOT 1990 Edition Standard Specification Subsection 1102 for durability Class 1.

	DISTANCE FROM CENTERLINE (L.T. & R.T.)										
	0'	2'	4'	6'	7'	8'	10'	12'	14'	14.5'	15.5'
A: Top of Curbs to Top of Surface Lift	0.13	0.18	0.24	0.30	0.33	0.36	0.43	0.49	--	--	--
B: Top of Curbs to Top of Upper Base Lift	0.30	0.35	0.41	0.47	0.50	0.53	0.60	0.66	--	--	--
C: Top of Curbs to Top of C. R. Subgrade	0.47	0.52	0.60	0.68	0.71	0.75	0.83	0.90	0.98	1.00	1.02

29' RESIDENTIAL PAVEMENT SECTION
5 INCH ASPHALTIC CONCRETE PAVEMENT
WITH 5" REINFORCED CRUSHED ROCK BASE



CONSTRUCT COMBINED ROLL TYPE CURB & GUTTER (3 5/8" & 1 1/2")

CONSTRUCT 5" A.C. P.V.M.T. (3" BIT. BASE) W/5" REINFORCED CRUSHED ROCK BASE.

END CONSTRUCTION MATCH PROJECT # 472-82652

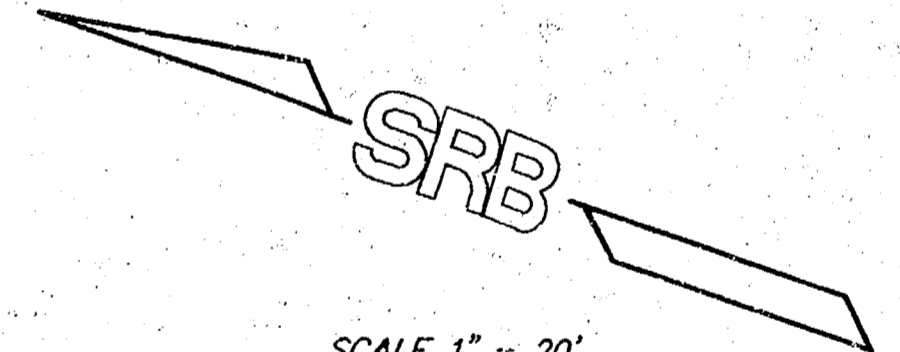
WATER VALVE BOX ADJUSTMENTS

STATION	OFFSET	EXIST. TOP	FIN. TOP
1+00	39.7" RT.	161.7	161.20

CURVE #1
Curve Data Based on Centerline
Rad. = 462.25' Delta = 150°00' Tangent = 60.86'
Arc = 121.01' L.C. = 120.67' Def/ft = 3.71870 Min.

Station	FACE CHORD LENGTHS		Defl.	T. Defl.
	8' Lt.	8' Rt.		
1+40.74	-	-	0°00'00"	0°00'00"
1+50.00	9.26'	8.82'	9.70'	0°34'26"
1+75.00	25.00'	23.61'	26.19'	1°32'58"
2+00.00	25.00'	23.61'	26.19'	1°32'58"
2+25.00	25.00'	23.61'	26.19'	1°32'58"
2+50.00	25.00'	23.61'	26.19'	1°32'58"
2+61.75	11.75'	11.19'	12.31'	0°43'42"

* TRANSITION FROM COMBINED ROLL TYPE CURB & GUTTER (3 5/8") TO COMBINED CURB & GUTTER (6 5/8")



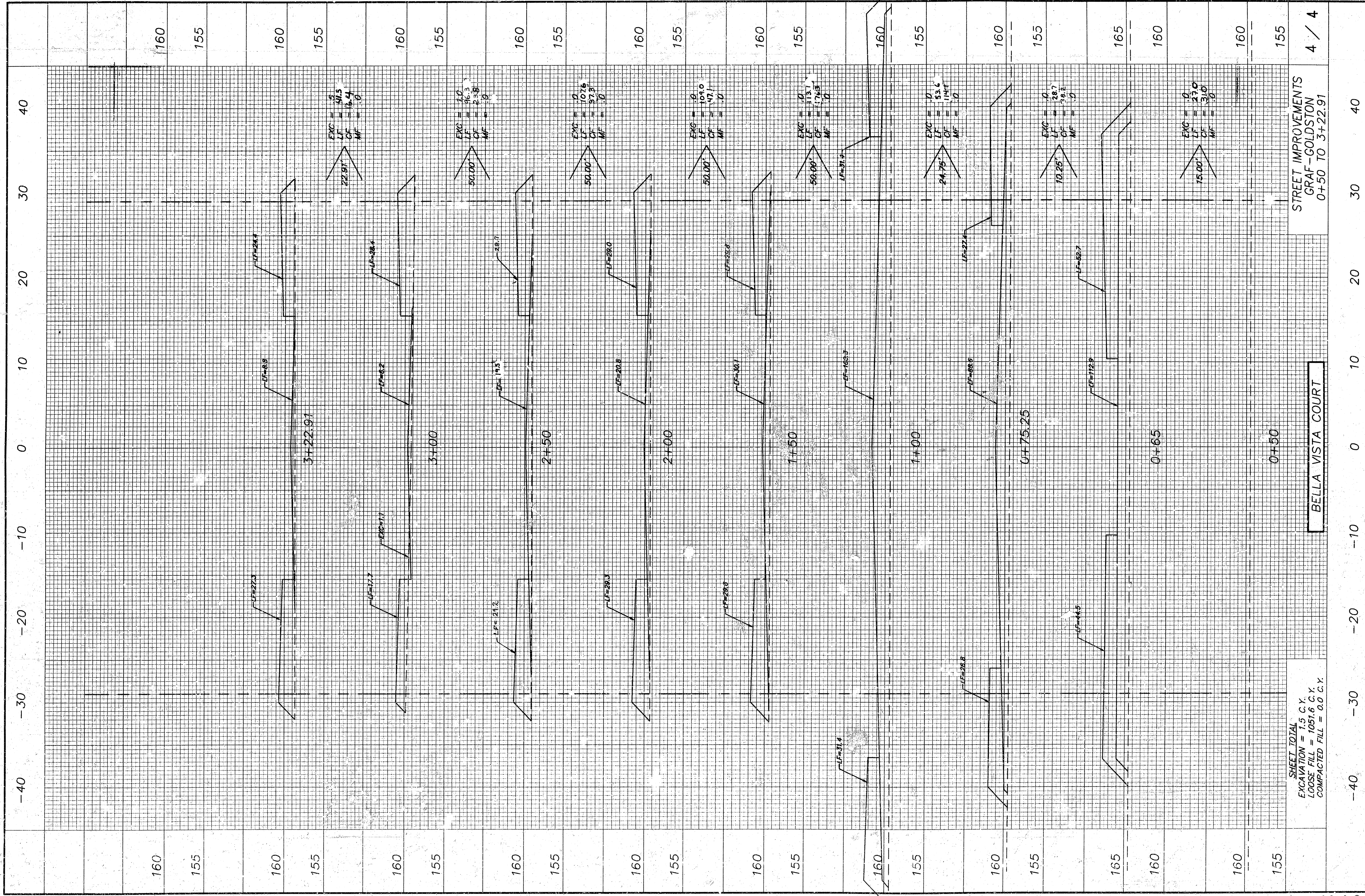
SCALE 1" = 20'

**GRAF-GOLDSTON 2ND ADDITION
BELLA VISTA COURT IMPROVEMENTS
WICHITA, KANSAS**

SRB		924 NORTH MAIN WICHITA, KANSAS 67203	316-264-8008 FAX 316-462-1
SAVOY, RUGGLES & BOHM, P. A. ENGINEERING & SURVEYING			
PROJECT NUMBER 472-245-82653-000-000-001			
DESIGN	REVIEW	DATE	UTILITY
DKD	KWL	JCR July 15, 1996	JCR
SRB JOB			444T

REVISED
 3
 OF
 4

F:\Active Projects\Qm Devore\444tst (Graf-Goldston 2nd Street)\SRBELLC\1\bel1a.ct



BELLA VISTA COURT

STREET IMPROVEMENTS
 GRAF-GOLDSTON
 0+50 TO 3+22.91

4 / 4