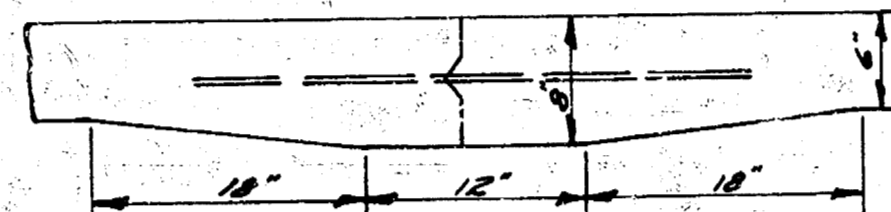
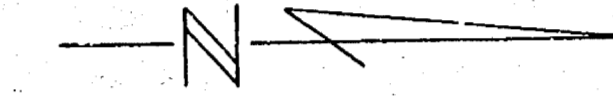


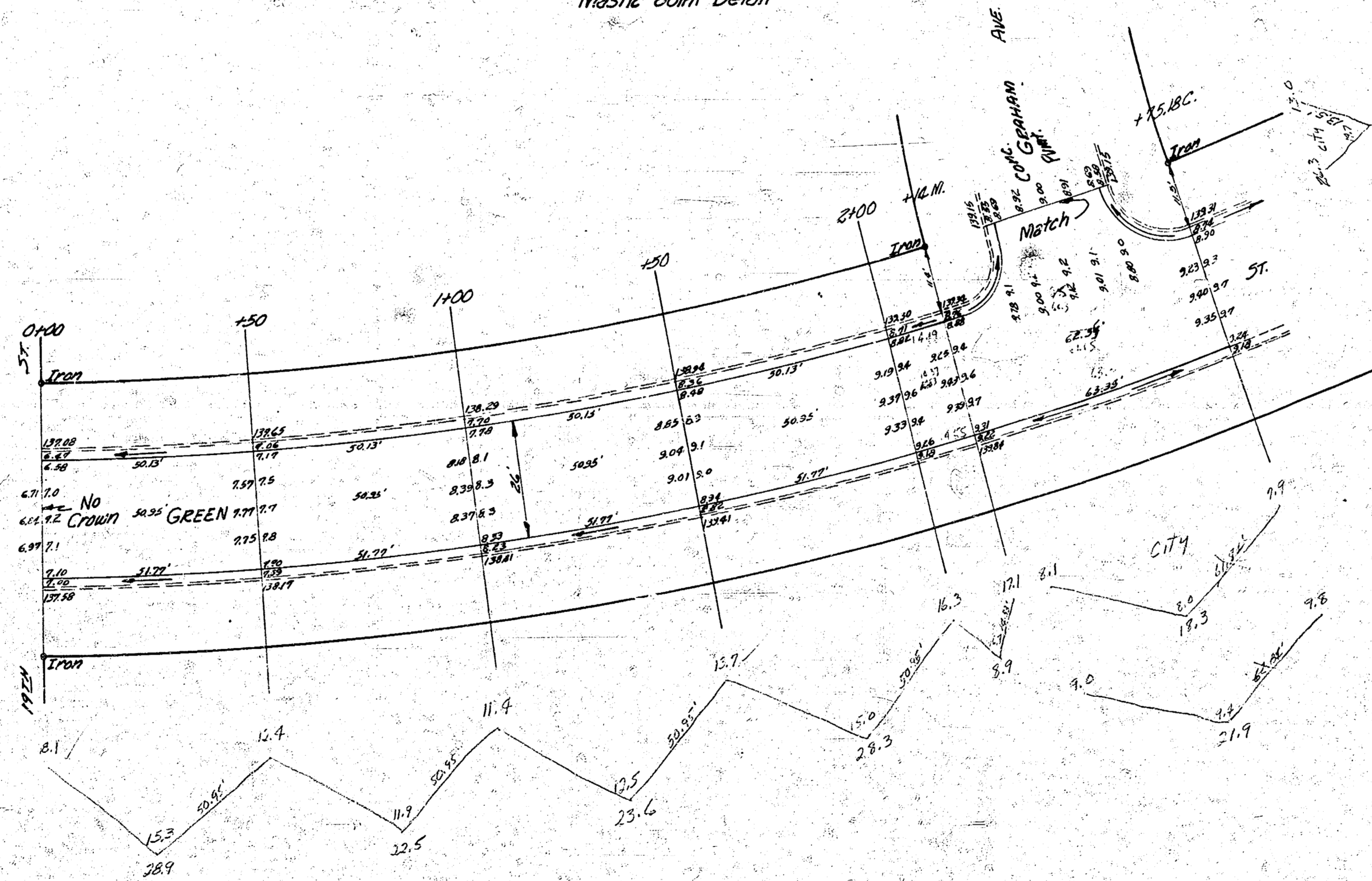
B.M. 133.84 "G" in Globe on int. E.S. of drive 15' W of SW cor. Green & Graham
Stationing on W ch.



Use 1/2" # Bars, 3' Long, on 2'-6" Ctrs.
Mastic Joint Detail



CAMP
BY BS
C.V.
C.S. JT



Excavation			
Prop	City	Prop	City
Cut	Fill	Cut	Fill
134.1	0	20.2	0
118% 13.2		110% 2.8	
147.5 Cu. yds.		23.0 Cu. yds.	



GREEN
 N.L. 19TH TO N.L. GRAHAM
 26" CONCRETE
 CITY OF WICHITA KANSAS
 B.E. SMITH CITY ENGINEER
 JULY 1954 PROJ. NO. CM-121

1 5 8 11