

PAVING PLANS FOR PENSTEMON THIRD ADDITION

(N.L. GREENBRIAR TO & INCLUDING CUL-DE-SAC)

**PROJECT NO.
472-76-245-81477-000-000-001**

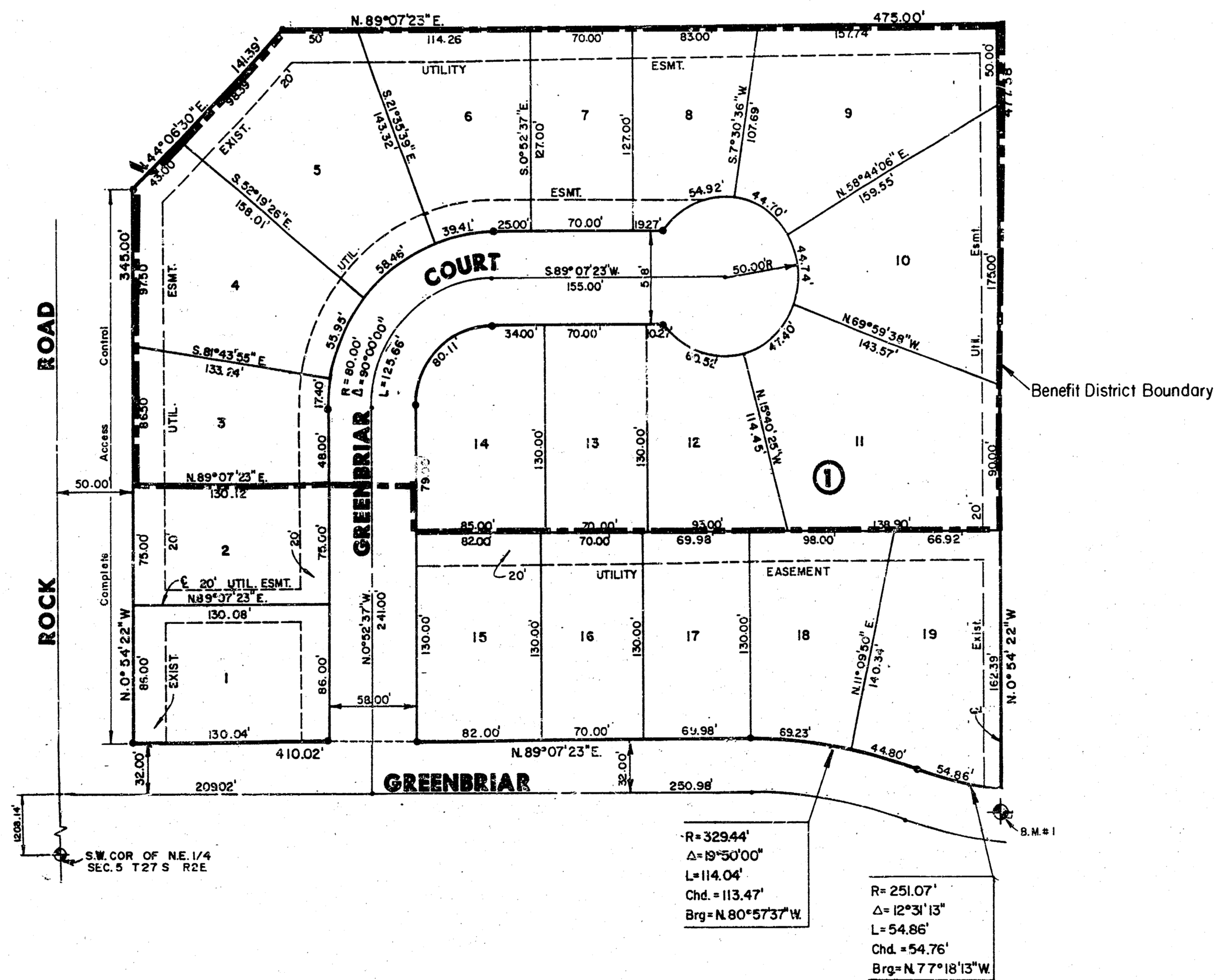
CITY OF WICHITA, KANSAS
MIKE LINDEBAK, CITY ENGINEER
JUNE, 1985

GENERAL NOTES:

1. CURB AND GUTTER WITH WIDENED GUTTER TO BE PAID AS COMBINED CURB AND GUTTER.
 2. CONTRACTOR SHALL BE RESPONSIBLE FOR PRESERVING PROPERTY IRONS. THE CONTRACTOR SHALL BE REQUIRED TO RE-ESTABLISH ANY PROPERTY IRONS WHICH ARE DAMAGED OR DESTROYED BY THIS CONSTRUCTION OPERATION. SUCH IRONS SHALL BE RE-ESTABLISHED BY A LICENSED LAND SURVEYOR OR A LICENSED PROFESSIONAL ENGINEER IN ACCORDANCE WITH STATE LAWS.
 3. CONTRACTOR SHALL NOTIFY THE UTILITY COMPANIES OF CONSTRUCTION SCHEDULING.
 4. TRANSITION CURB FROM FULL HEIGHT COMBINATION CURB AND GUTTER TO ROLL TYPE COMBINATION CURB AND GUTTER IS TO BE PAID AS BID FOR LINEAL FEET COMBINED CURB AND GUTTER (3 5/8" ROLL).
- NOTE: NOTIFY THE FOLLOWING COMPANIES PRIOR TO ANY EXCAVATION:
- | | |
|------------------------|----------------|
| ARKLA GAS COMPANY | 942-8350 |
| BELL TELEPHONE COMPANY | 268-2256 |
| CABLEVISION | 269-3340 |
| GAS SERVICE COMPANY | 263-7511 |
| KANSAS GAS & ELECTRIC | 261-6375 |
| KANSAS ONE-CALL | 1-800-DIG-SAFE |
5. CONSTRUCT ROLL-TYPE COMBINED CURB AND GUTTER (3 5/8") ON THIS PROJECT. CURB SHALL BE DEPRESSED THROUGH DRIVES (1 1/2").
 6. PAVING CONTRACTOR SHALL COORDINATE WITH SANITARY SEWER CONTRACTOR.

BENCH MARK

B.M.#1 = 21915"± T.C. NORTH SIDE GREENBRIAR & SE. COR. PENSTEMON 3RD.



INDEX TO DRAWINGS

SHEET NO.	DESCRIPTION
1	TITLE SHEET
2-3	PAVING DETAILS
4	GREENBRIAR CT.
5-9	CROSS SECTIONS
10	FINAL PLAT



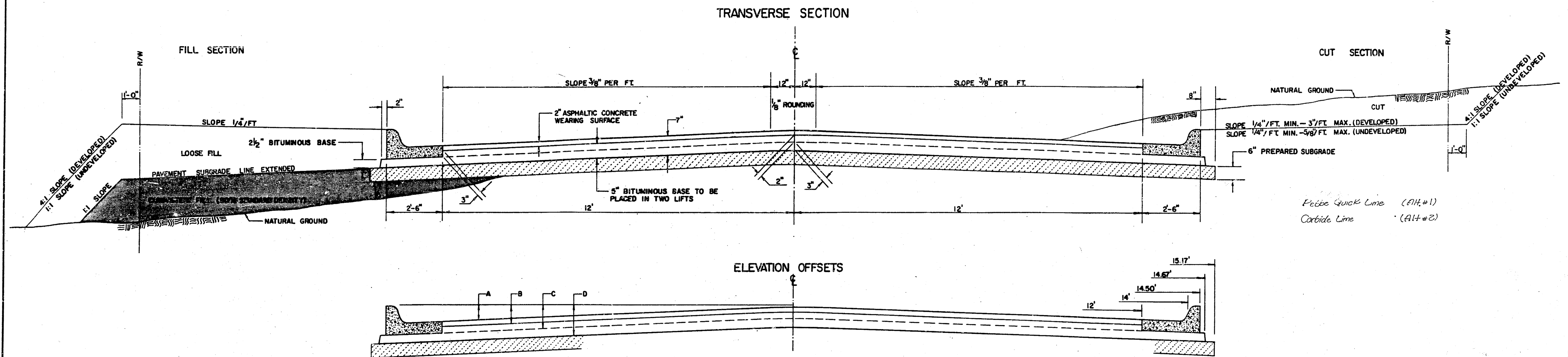
MEC	GREENBRIAR CT.	FF
	N.L. GREENBRIAR TO INC. CUL-DE-SAC.	FF
	Survey by K.H.B.	G.A.
	Date:	Date:

MID-KANSAS ENGINEERING CONSULTANTS PA
3500 NORTH ROCK ROAD
BUILDING # 800
WICHITA, KANSAS

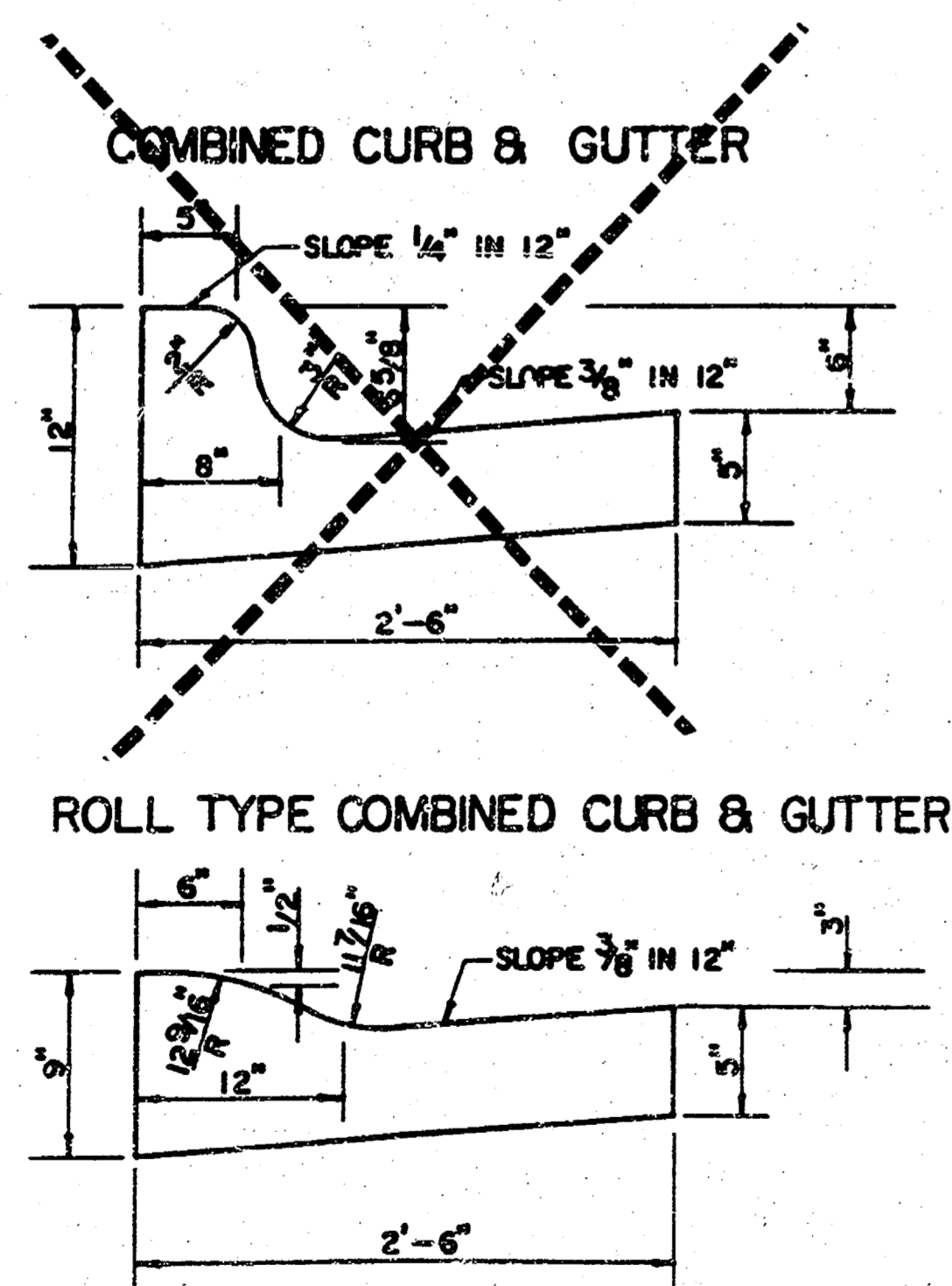
682-6561

Sheet
1
of
10

TYPICAL 29' PAVEMENT DETAILS



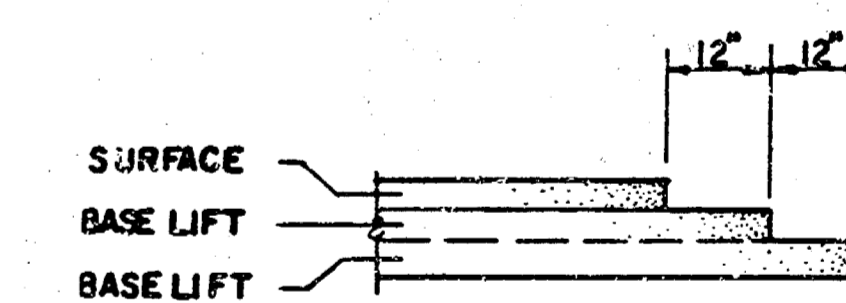
	DISTANCE FROM CENTERLINE (LT. & RT.)												
	0'	2'	4'	6'	7'	8'	10'	12'	14'	14.5'	14.67'	15.17'	
A: TOP OF CURBS TO TOP OF SURFACE LIFT	0.13	0.18	0.24	0.30	0.33	0.36	0.43	0.49	—	—	—	—	
B: TOP OF CURBS TO TOP OF UPPER BASE LIFT	0.30	0.35	0.41	0.47	0.50	0.53	0.60	0.66	—	—	—	—	
C: TOP OF CURBS TO TOP OF LOWER BASE LIFT	0.47	0.52	0.60	0.68	0.71	0.75	0.83	0.90	0.98	1.00	1.01	—	
D: TOP OF CURBS TO TOP OF SUBGRADE	0.72	0.77	0.84	0.91	0.94	0.98	1.05	1.12	1.19	1.21	1.21	1.23	



GENERAL NOTES

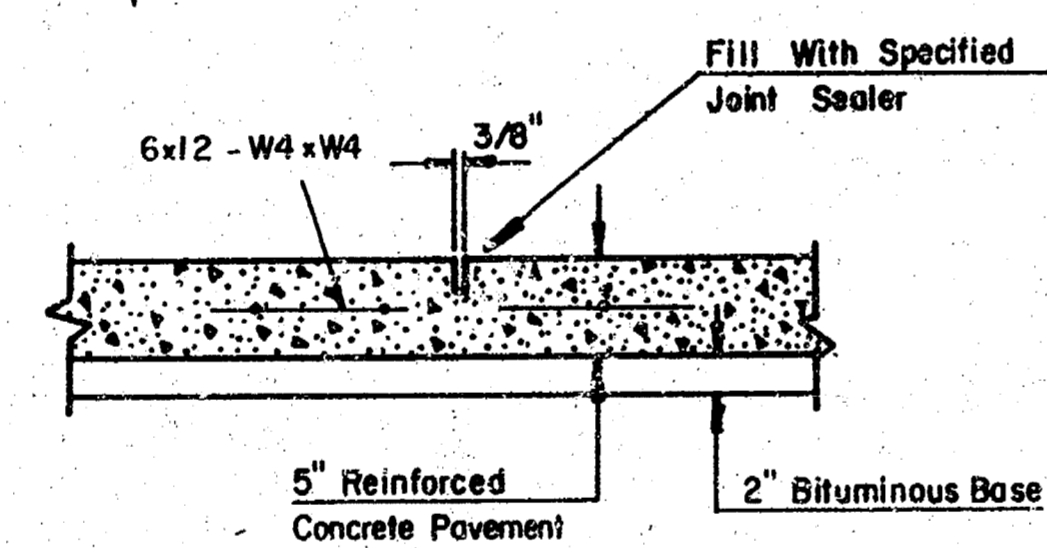
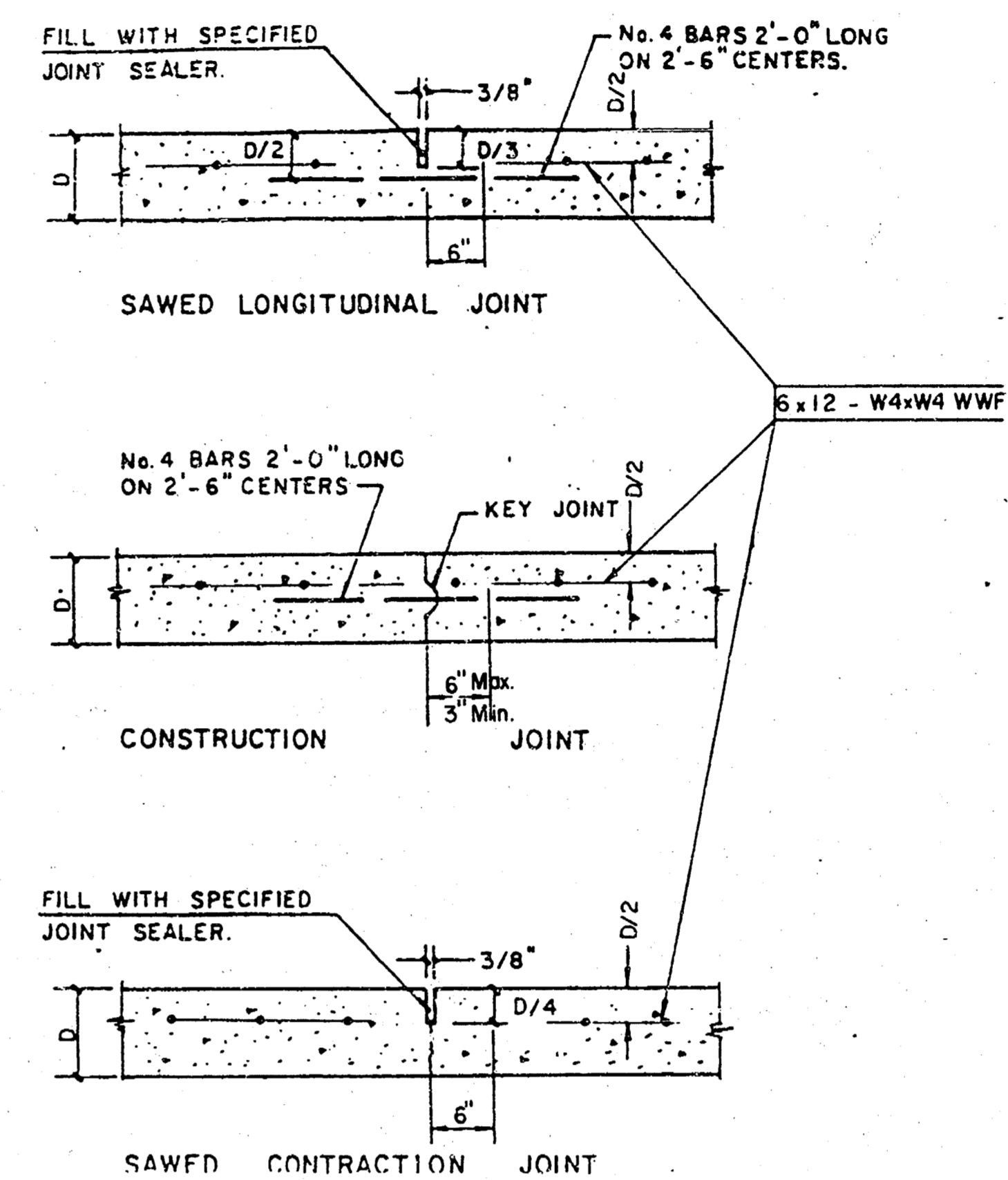
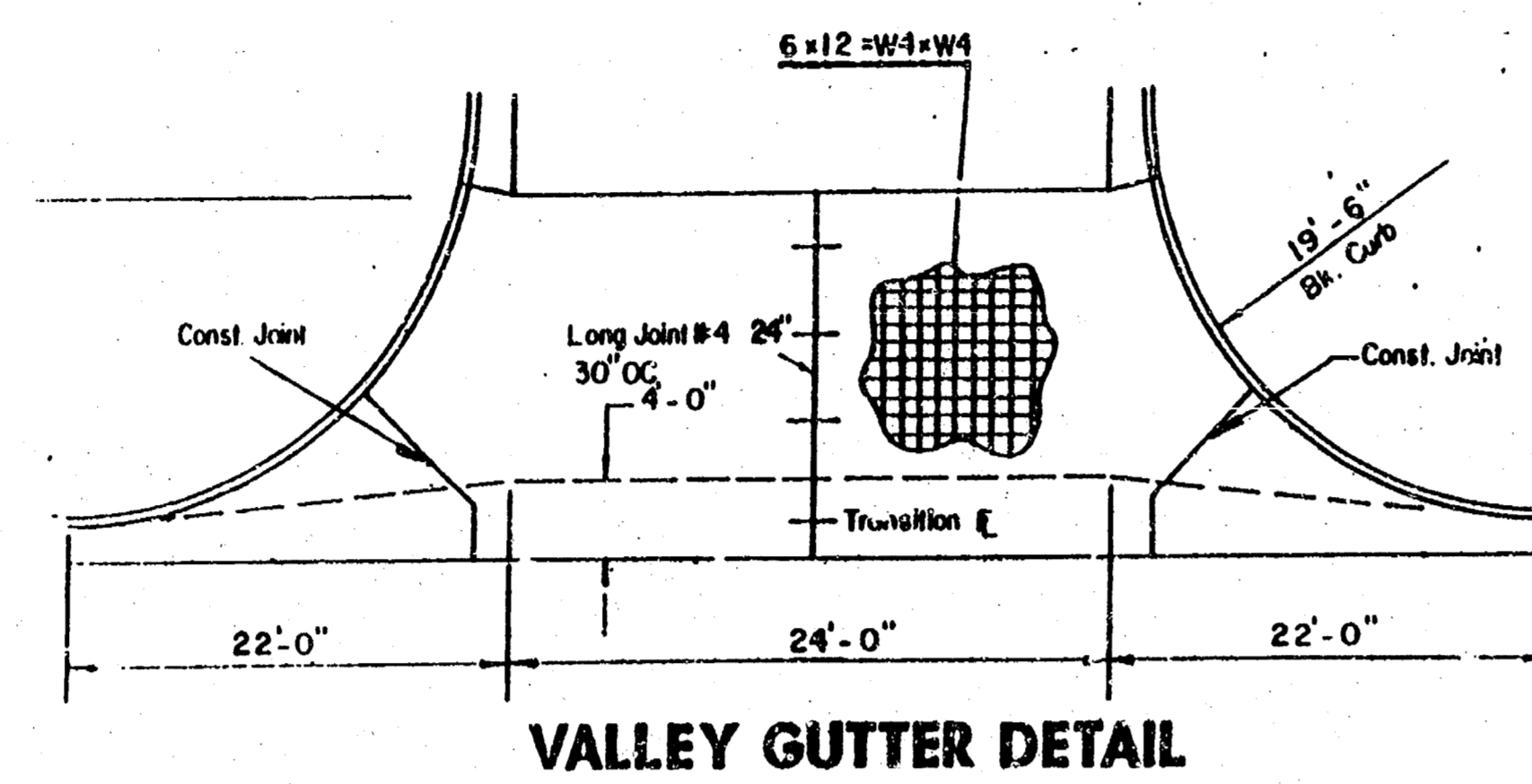
- 1) THE ASPHALTIC CONCRETE PAVEMENT BETWEEN THE COMBINED CURB AND GUTTER SHALL BE PAID AS SQUARE YARDS OF 7" ASPHALTIC CONCRETE (5" BITUMINOUS BASE).
- 2) THE BITUMINOUS BASE UNDER AND BEHIND THE COMBINED CURB AND GUTTER SHALL BE PAID AS SQUARE YARDS OF 2 1/2" BITUMINOUS BASE.
- 3) A TACK COAT OF EMULSIFIED ASPHALT (SC-1H OR CSS-1H) SHALL BE APPLIED AT AN APPROXIMATE RATE OF 0.05 GALLONS PER SQUARE YARD BETWEEN EACH LIFT OF ASPHALTIC MATERIAL.
- 4) BITUMINOUS BASE AND ASPHALTIC CONCRETE WEARING SURFACE SHALL BE PLACED WITH A LAYDOWN MACHINE HAVING AUTOMATIC CONTROLS FOR LINE AND GRADE.
- 5) CONSTRUCTION JOINTS IN EACH LIFT SHALL BE STAGGERED A MINIMUM DISTANCE OF ONE (1) FOOT FROM JOINTS IN PRECEDING LIFTS AND PLACED SO THAT A JOINT WILL BE CONSTRUCTED ON THE CENTERLINE OF THE TOP LIFT.
- 6) CONTRACTOR TO BID ONLY ONE SUBGRADE TREATMENT ALTERNATE WHEN ALTERNATES ARE PROVIDED IN THE PROPOSAL AND CONTRACT. THE ALTERNATE CHOSEN BY THE SUCCESSFUL BIDDER SHALL BE USED IN CONSTRUCTING THIS PROJECT.

TRANSVERSE CONSTRUCTION JOINTS



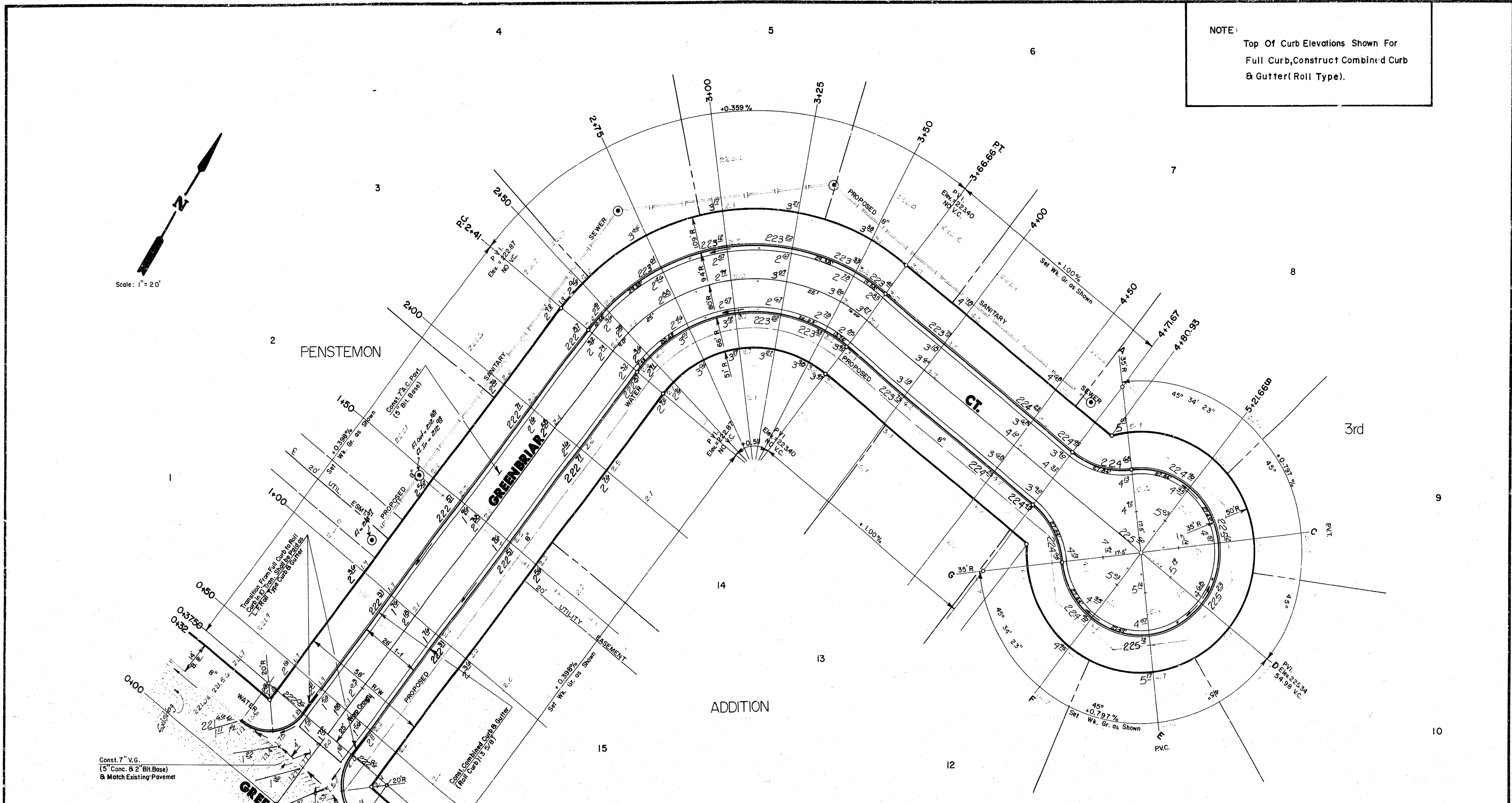
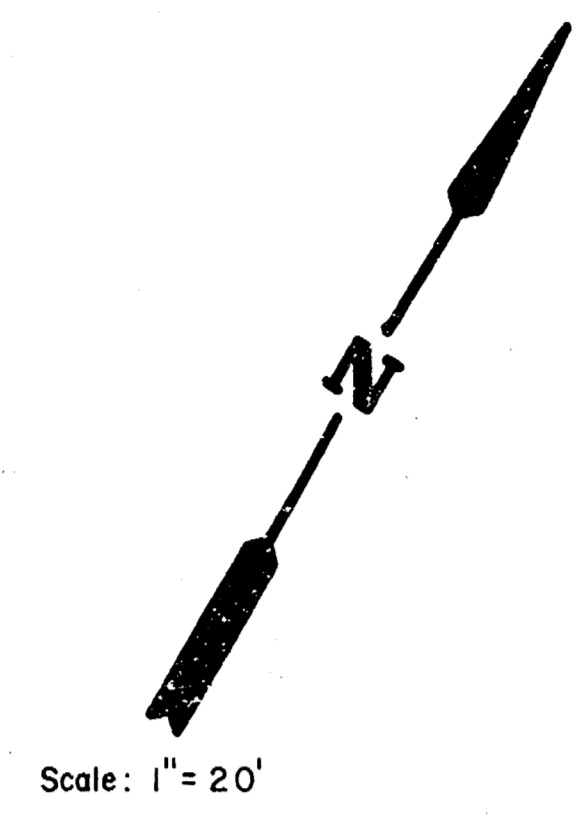
TRANSVERSE CONSTRUCTION JOINTS SHALL BE CONSTRUCTED IN FLEXIBLE BASE PAVEMENTS AT LOCATIONS WHERE PAVEMENT JOINTS EXISTING FLEXIBLE BASE PAVEMENT AS SHOWN BY THE DETAIL. ALL COSTS ASSOCIATED WITH THE CONSTRUCTION OF THE TRANSVERSE JOINT SHALL BE INCLUDED IN THE BID PRICE FOR SQUARE YARDS 7" ASPHALTIC CONCRETE (5" BITUMINOUS BASE).

7 INCH RESIDENTIAL ASPHALTIC CONCRETE
PAVEMENT WITH 5 INCH BITUMINOUS BASE
CITY OF WICHITA, KANSAS
PROJECT NUMBER
472-76-245-81477-000-000-001



	DETAILS	Design FF
		Drawn by FF
		Checked by K.H.B.
		Survey by G.A.
MID-KANSAS ENGINEERING CONSULTANTS PA 240 NORTH ROCK ROAD SUITE 130 WICHITA, KANSAS 67206		Date Sheet 3 / 10 of 10

NOTE:
Top Of Curb Elevations Shown For
Full Curb, Construct Combined Curb
& Gutter (Roll Type).



Const. 7" V.G.
(5" Conc. & 2" Bit Base)
& Match Existing Pavement

Remove 68 ± L.F. of Exit Combined
Curb & Gutter to nearest Joint

INTERSECTION QUANTITIES

— S.Y. — Concrete Pavement	
— S.Y. — Asphaltic Conc. Pavement (— Bituminous Base)	
— S.Y. — Bituminous Base	
— L.F. Combined Curb & Gutter	
— S.F. 4" Wheelchair Ramp	
— S.F. 4" Walk	
— C.Y. Excavation	
— C.Y. Compacted Fill	
— Lbs. Reinforcing Steel	
— 85.6 S.Y. Manipulation	
— Tons Lime or Cement	
— 81.8 S.Y. V.G. — 5" Concrete & 2" Asphaltic Concrete Base	

Excavation	627.60 C.Y.
+ 10%	69.03
Total	736.63 C.Y.
Manipulation	2082.80 S.Y.

GREENBRIAR COURT

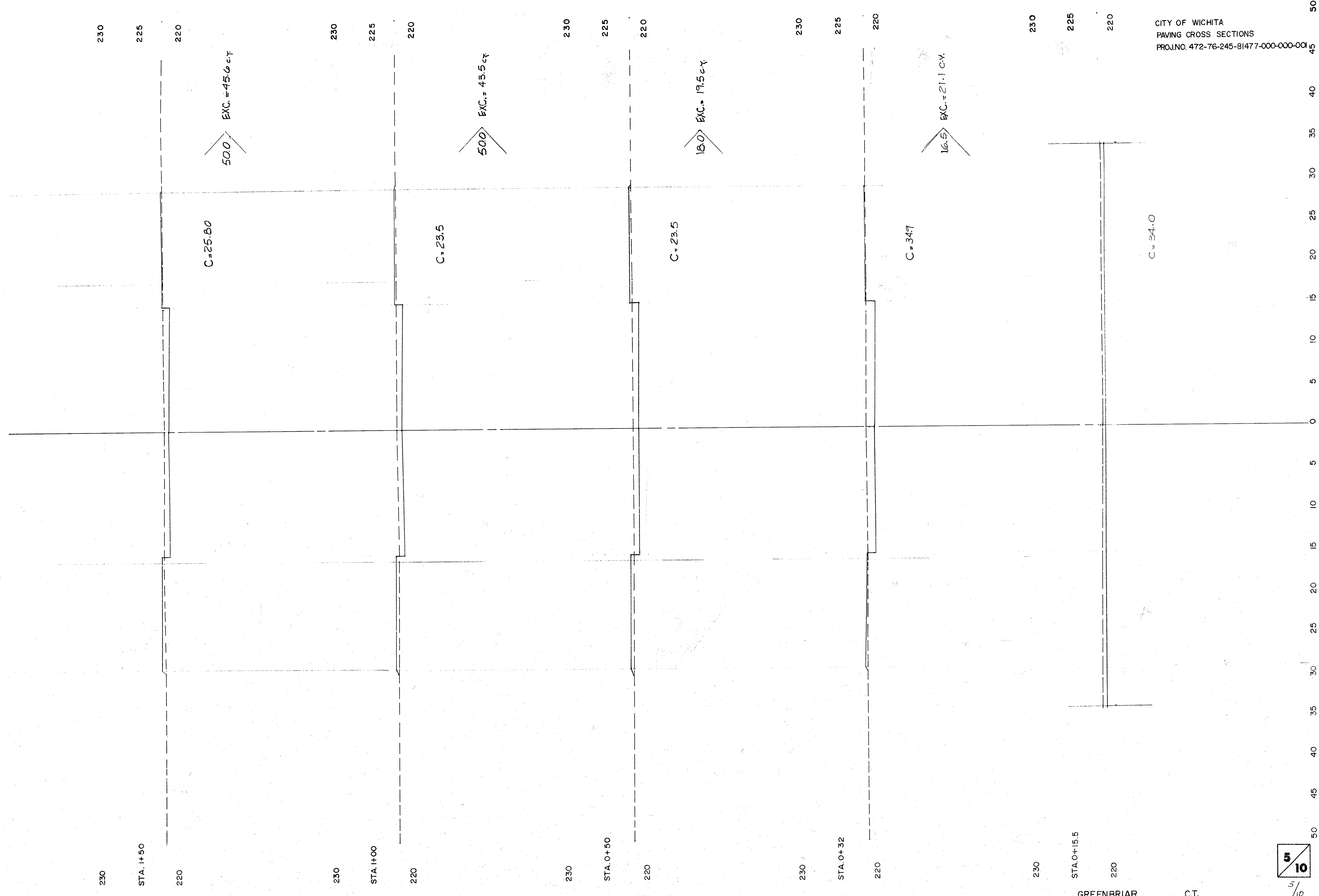
$\Delta=90^{\circ}00'00''$ R=80' T=80' L=125.66 LC=113.14

CURVE DATA BASED ON $\Delta=45^{\circ}00'00''$

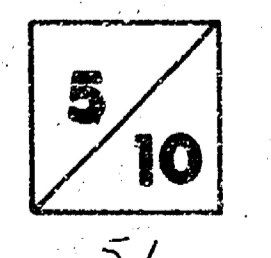
STATION	ARC	CHORD	LENGTH	DEFLECTION	TOTAL DEFLECTION
		& OFFICIAL ON RCCL			
2 + 41					0°00'00"
2 + 50	9.0	11.47	6.52	3°13'23"	3°13'23"
2 + 75	25.0	31.75	19.05	8°57'10"	12°10'33"
3 + 00	25.0	"	"	"	21°07'43"
3 + 25	"	"	"	"	30°04'53"
3 + 50	25.0	31.75	18.05	8°57'10"	39°02'03"
3 + 66.66	16.66	21.20	12.06	5°57'57"	45°00'00"

Def/FT = 21.485918 min

	CITY OF WICHITA	Design by F.F.
	GREENBRIAR CT.	Drawn by F.F.
	PROJECT NO. 472-76-245-81477-000-000-001	Checked by K.H.B.
		Survey by G.A.
		Date
MID-KANSAS ENGINEERING CONSULTANTS PA 240 NORTH ROCK ROAD SUITE 130 WICHITA, KANSAS 67226		Sheet 4 10
		682-6561



CITY OF WICHITA
 PAVING CROSS SECTIONS
 PROJ. NO. 472-76-245-81477-000-000-001



5/10

50 45 40 35 30 25 20 15 10 5 0 5 10 15 20 25 30 35 40 45 50

230
225
220

230
220
STA. 3+00

C = 13.7

500
EXC. = 266 c.y.

230
225
220

230
220
STA. 2+50

C = 15.2

9.0
EXC. = 53 c.y.

230
225
220

230
220
STA. 2+41

C = 16.7

41.0
EXC. = 276 c.y.

230
225
220

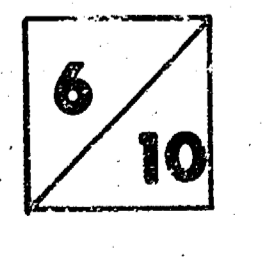
230
220
STA. 2+00

C = 17.7

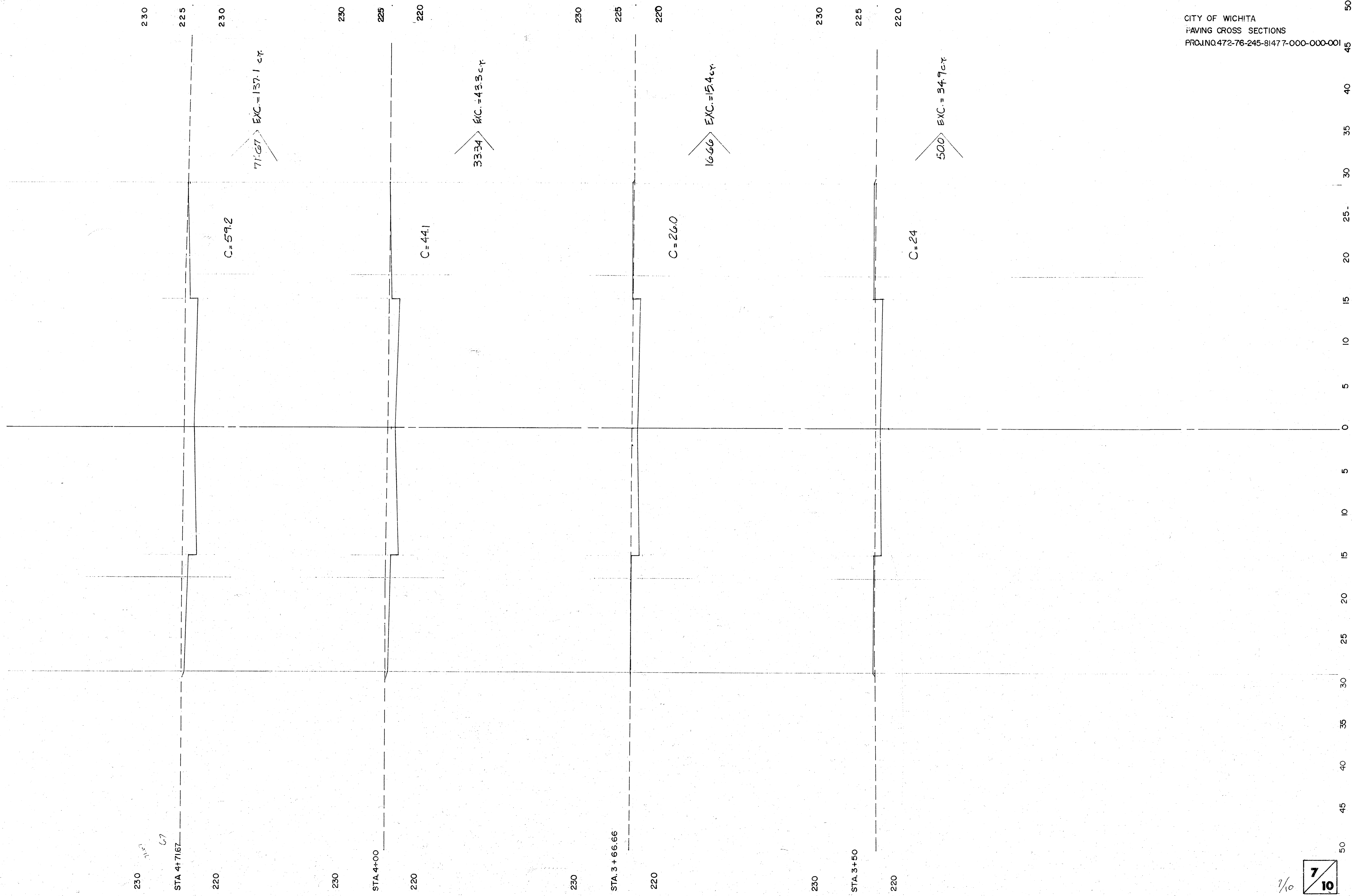
50.0
EXC. = 421 c.y.

CITY OF WICHITA
PAVING CROSS SECTIONS
PROJ. NO. 472 76-245-81477-000-000-001

6/10



50 45 40 35 30 25 20 15 10 5 0 5 10 15 20 25 30 35 40 45 50



CITY OF WICHITA
 PAVING CROSS SECTIONS
 PROJNO.472-76-245-81477-000-000-001

50
45
40
35
30
25
20
15
10
5
0
5
10
15
20
25
30
35
40
45
50

GREENBRIAR CT.

7/10

230
225
220

13.75
EXC. = 12.4 c.y.

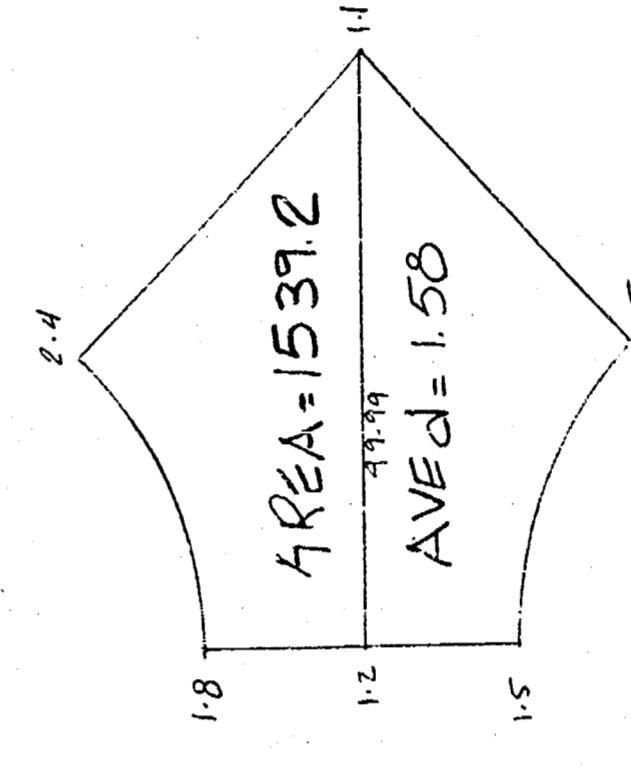
230
225
220

13.75
EXC. = 14.5 c.y.

230
225
220

13.92
EXC. = 18.0 c.y.

230
225
220



EXC. = 90.1 c.y.

230
225
220

CITY OF WICHITA
PAVING CROSS SECTIONS
PROJ. NO. 478-76-245-81477-000-000-001

0 5 10 15 20 25 30 35 40 45 50

230
220
STA. D

C = 22.2

230
220
STA. C

C = 26.4

230
220
STA. B

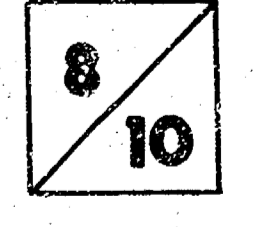
C = 30.4

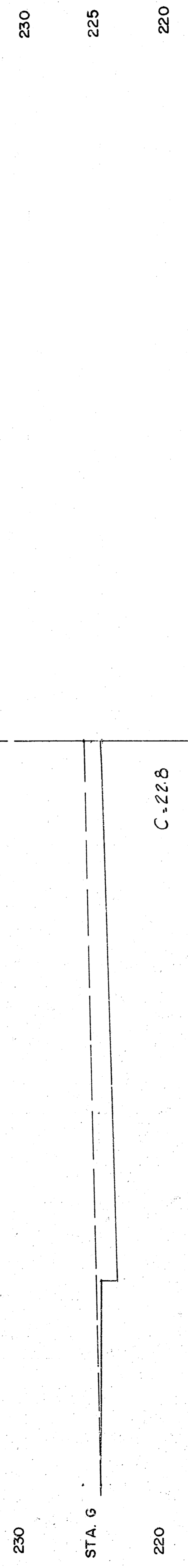
230
220
STA. A

C = 37.6

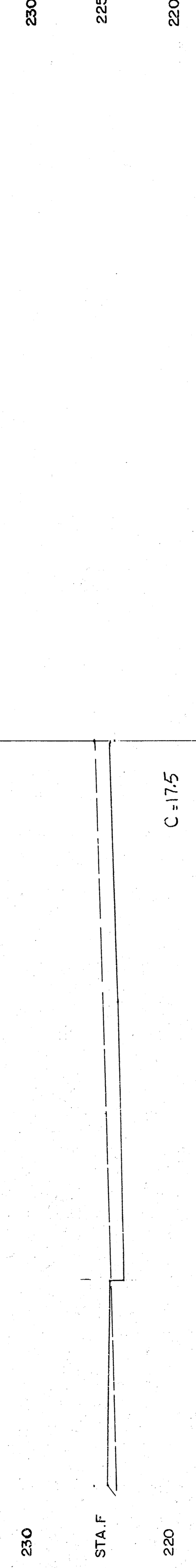
GREENBRIAR CT.

5/10

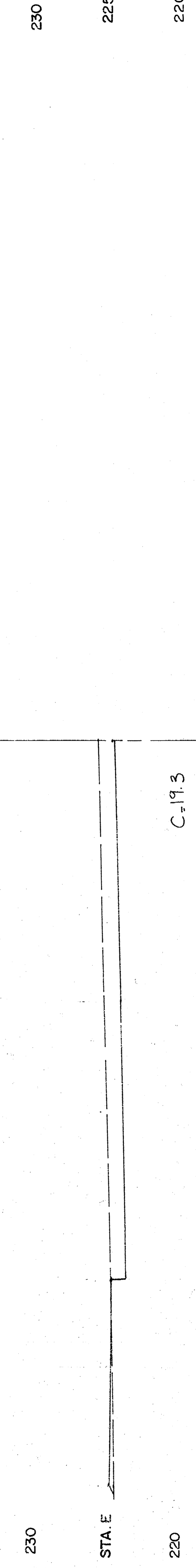




13.92
EXC. = 6.7



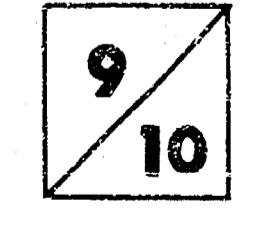
13.75
EXC. = 9.4 c/y



13.75
EXC. = 10.6 c/y

GREENBRIAR CT.

9/10



50
45
40
35
30
25
20
15
10
5
0
5
10
15
20
25
30
35
40
45
50

M-2-5-26

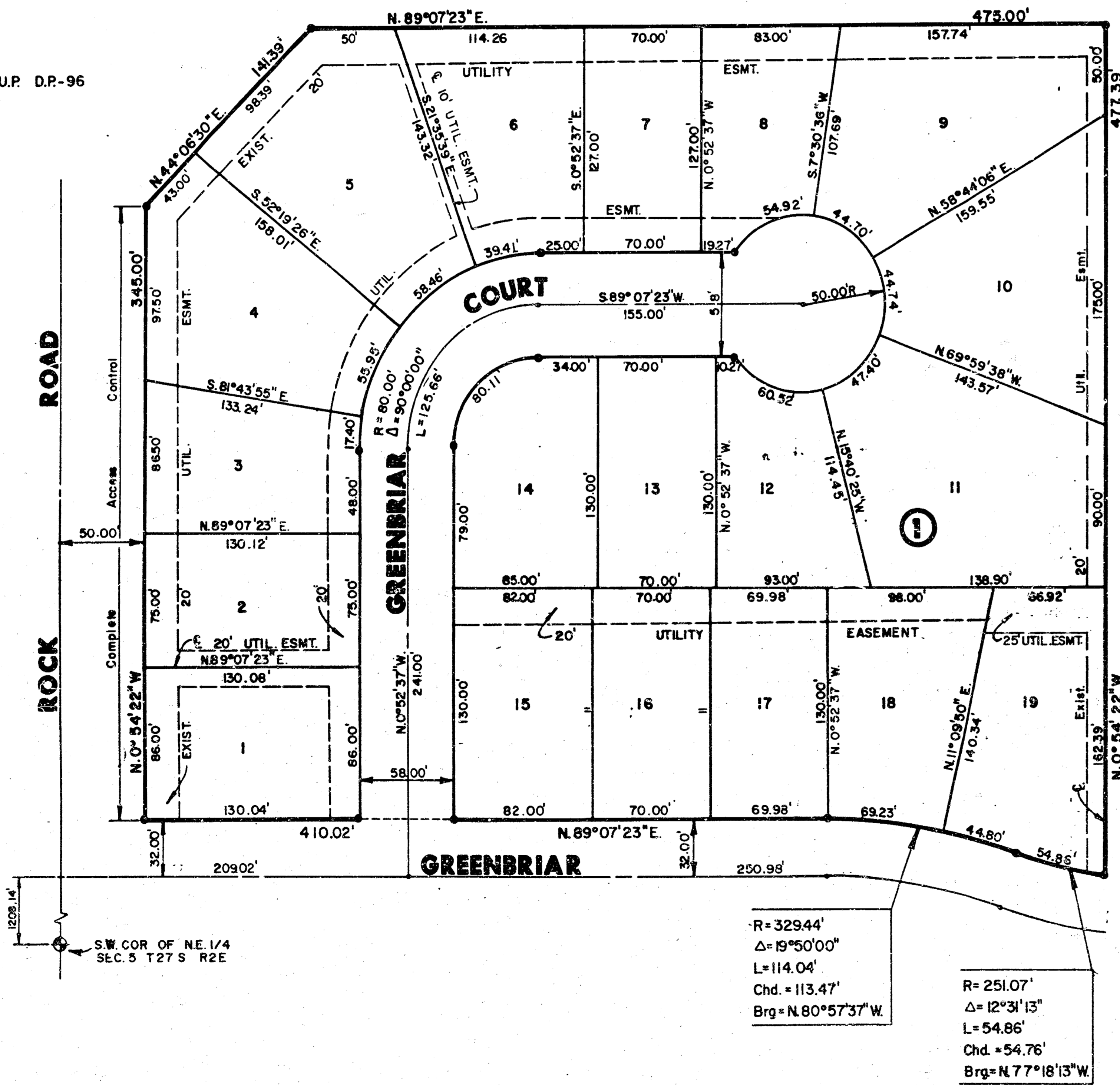
205 T-11

FINAL PLAT OF PENSTEMON 3RD. ADDITION

AN ADDITION TO WICHITA, SEDGWICK COUNTY, KANSAS

Scale: 1" = 50'
Setbacks As Per Tallgrass C.U.P. D.R.-96

LEGEND
• = Iron



I, Kenneth H. Bengtson, a Civil Engineer in Kansas, do hereby certify that I have been in responsible charge of surveying and platting of "PENSTEMON 3RD ADDITION", an addition to Wichita, Sedgwick County, Kansas into lots, a block, and a street, the same being accurately set forth in the accompanying plat and described as follows:

A replat of Lot 1, Block 1 "PENSTEMON SECOND ADDITION" an addition to Wichita, Sedgwick County, Kansas located in the northeast quarter of Section 5, Township 27 South, Range 2 East of the 6th P.M.

I hereby certify that the details of this plat are correct to the best of my knowledge and belief this 31st day of May, 1985.

Kenneth H. Bengtson
Kenneth H. Bengtson
Mid-Kansas Engineering Consultants, P.A.
3500 W. Rock Road, Bldg. 800
Wichita, KS 67226



Know all men by these presents that we the undersigned property owners of the land as above set forth in the Civil Engineers Certificate, have caused the same to be surveyed and platted into lots, a block, and a street, the same to be known as "PENSTEMON 3RD ADDITION" an addition to Wichita, Sedgwick County, Kansas. The streets are hereby dedicated to and for the use of the public. Easements for the construction and maintenance of public utilities and drainage, as indicated on the accompanying plat are hereby granted to the City of Wichita. All abutters rights of access to or from Rock Road over and across the west line of Block 1 are hereby granted to the City of Wichita. Building setbacks shall be as shown on the Tallgrass Community Unit Plan (DP-96) on file at the Wichita, Sedgwick County Metropolitan Area Planning Department office.

Tallgrass Company, a partnership

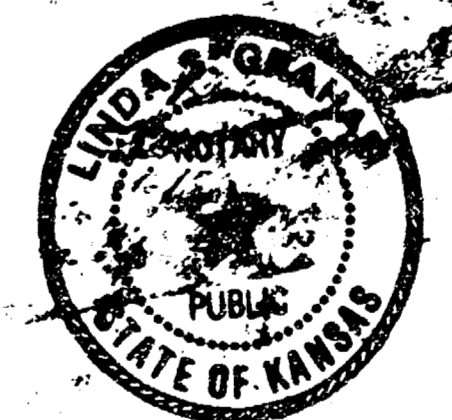
By: Jack D. Ritchie, partner

STATE OF KANSAS
COUNTY OF SEDGWICK

Be it remembered that on this 31st day of May, 1985, before me, a Notary Public in and for said State of Kansas, came Jack D. Ritchie, partner on behalf of Tallgrass Company, a partnership to me personally known to be the same person who executed the foregoing instrument of writing and duly acknowledged the execution of the same. In testimony whereof I have hereunto set my hand and affixed my notarial seal the day and year above written.

Notary Public

My Appointment Expires: February 9, 1986



The Wichita-Sedgwick County Metropolitan Area Planning Commission, Wichita, Kansas has received and approved this plat of

Dated this 16th day of May, 1985.

Wichita-Sedgwick County Metropolitan Area Planning Commission

James C. Wilson, Chairman
Robert A. Lakin, Secretary

This plat approved and all dedications shown hereon, if any, accepted by the City Commission of the City of Wichita, Kansas, this 11th day of May, 1985.

Tony Casado, Vice Mayor
Donald C. Gist, City Clerk

Entered on transfer record this 28 day of June, 1985.

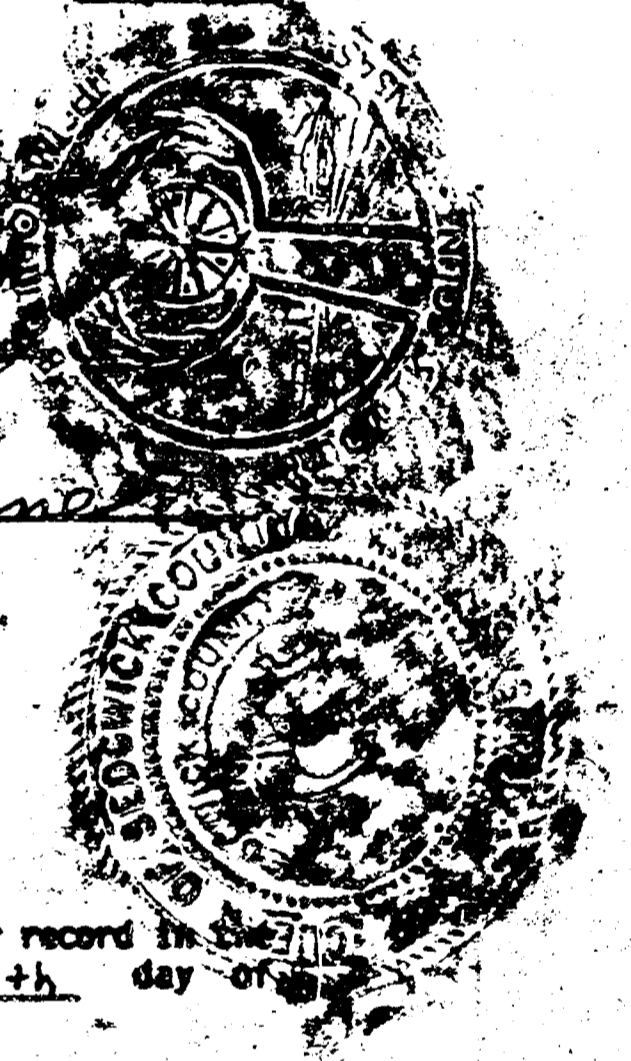
Don Wright, County Clerk

STATE OF KANSAS
COUNTY OF SEDGWICK

This is to certify that this instrument was filed for record in the Register of Deeds Office at 9:00 AM this 28th day of June, 1985.

Pat Kettler, Register of Deeds

Ed Resa, Deputy



20.00

M-2 526

10 10 4 15

10/10

M-2 5-26