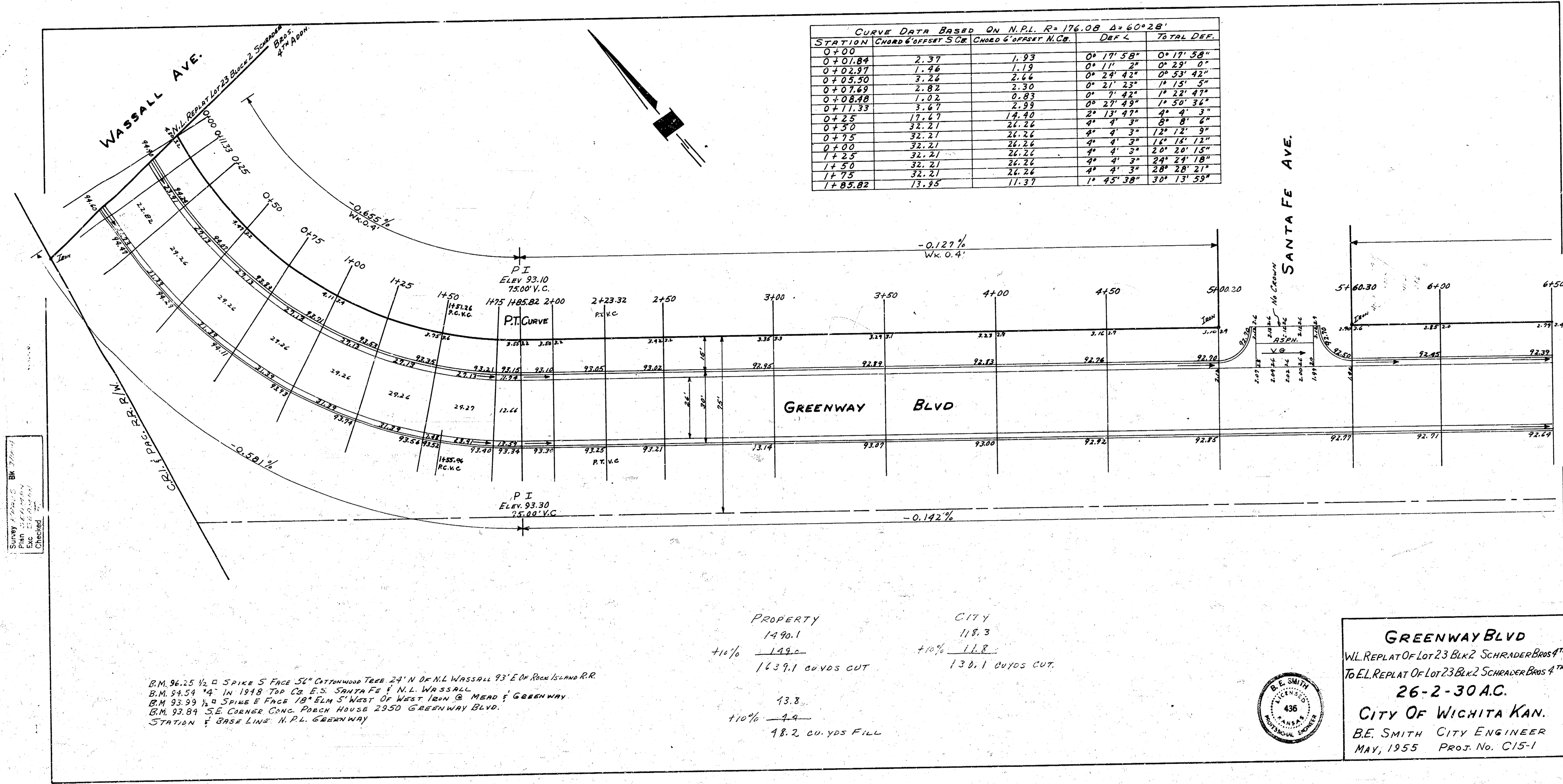


CURVE DATA BASED ON N.P.L. R=176.08 Δ=60°28'

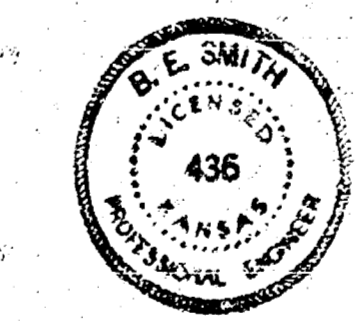
STATION	CHORD & OFFSET S.C.	CHORD & OFFSET N.C.	DEF. L.	TOTAL DEF.
0+00				
0+01.84	2.37	1.93	0° 17' 58"	0° 17' 58"
0+02.97	1.46	1.19	0° 11' 27"	0° 29' 25"
0+05.50	3.26	2.66	0° 24' 42"	0° 54' 07"
0+07.69	2.82	2.30	0° 21' 33"	1° 15' 51"
0+08.98	1.02	0.83	0° 7' 42"	1° 23' 47"
0+11.33	3.67	2.99	0° 27' 49"	1° 51' 36"
0+12.5	17.67	14.40	2° 13' 47"	4° 4' 3"
0+150	32.21	26.22	4° 4' 3"	8° 8' 6"
0+175	32.21	26.22	4° 4' 3"	12° 16' 12"
0+200	32.21	26.22	4° 4' 3"	16° 20' 15"
1+25	32.21	26.22	4° 4' 3"	20° 24' 18"
1+50	32.21	26.22	4° 4' 3"	24° 28' 21"
1+75	32.21	26.22	4° 4' 3"	28° 32' 24"
1+85.82	13.35	11.37	1° 45' 38"	30° 13' 59"



Survey of 1955 by B.E. Smith  
 Plan Checked by  
 Exc. Checked by  
 Checked by

B.M. 96.25 1/2" SPIKE S FACE 5" COTTONWOOD TREE 24' N OF N.L. WASSALL 93' E OF ROCK ISLAND R.R.  
 B.M. 94.54 1/2" IN 1948 TO CO. E'S SANTA FE & N.L. WASSALL  
 B.M. 93.99 1/2" SPIKE S FACE 18" ELM S' WEST OF WEST IRON & MEAD & GREENWAY  
 B.M. 93.89 S.E. CORNER CONC. PORCH HOUSE 2950 GREENWAY BLVD.  
 STATION & BASE LINE: N.P.L. GREENWAY

PROPERTY 1490.1 CITY 118.3  
 +10% 143.0 +10% 11.8  
 1639.1 CUBS CUT 130.1 CUBS CUT  
 13.8  
 +10% 4.9  
 18.2 CU. YDS FILL



**GREENWAY BLVD**  
 W.L. REPLAT OF LOT 23 BLK 2 SCHRADER BROS 4<sup>TH</sup>  
 TO E.L. REPLAT OF LOT 23 BLK 2 SCHRADER BROS 4<sup>TH</sup>  
 26-2-30 A.C.  
 CITY OF WICHITA KAN.  
 B.E. SMITH CITY ENGINEER  
 MAY, 1955 PROJ. No. C15-1

