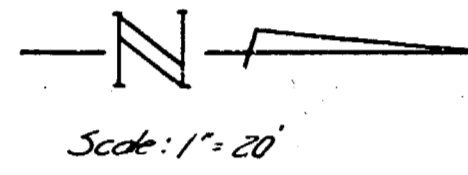
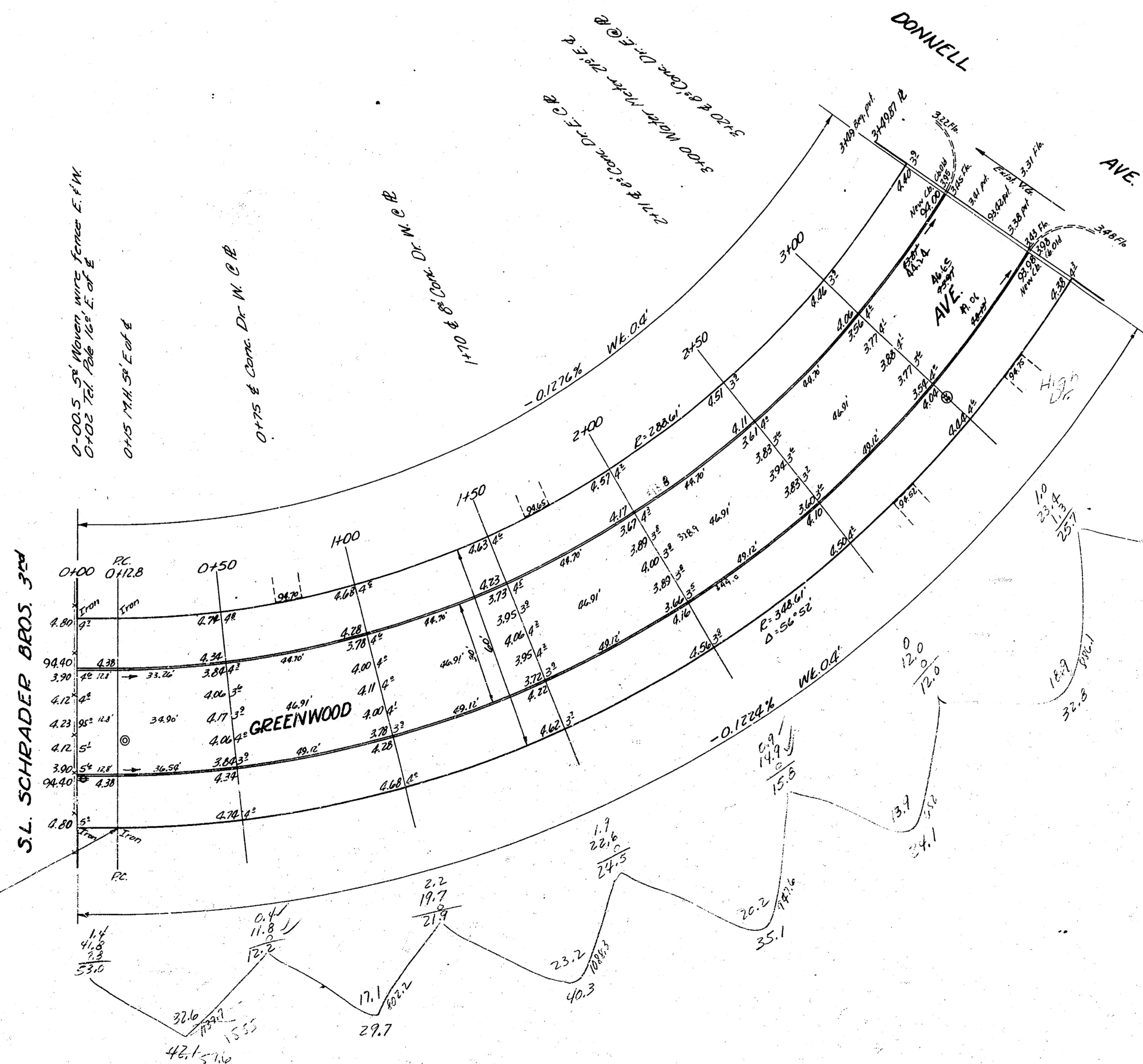


3.17 86.54 N.W. Cor. Porch next to gar. wall, Ho. # 2916 Greenwood

Stations on 9° offset from E.R.



Surveyed by B.K. CAMPBELL
 Prepared by J.C. O'NEILL
 Checked by J.T.



Curve Data for 9° OFFSET FROM FACE OF E. CR. Δ = 36° 57' P = 330.61'

Station	Arc Length	Offset	Chord	Deflect. L	Total Deflect.
0+12.8	37.20	32.18	33.20	3° 08' 16"	3° 08' 16"
1+00	50.00	48.95	46.46	4° 13' 04"	7° 21' 20"
1+50	50.00	48.95	46.46	4° 13' 04"	11° 34' 24"
2+00	50.00	48.95	46.46	4° 13' 04"	15° 47' 28"
2+50	50.00	48.95	46.46	4° 13' 04"	19° 00' 32"
3+00	50.00	48.95	46.46	4° 13' 04"	22° 13' 36"
3+50	50.00	48.95	46.46	4° 13' 04"	25° 26' 40"
3+50.72	0.87	0.87	0.87	0° 00' 00"	25° 26' 40"

Excav.

Prop.	City
237.7	0
410.0	0
Total	283.7 cu. yd.

Ties E. from 0+12.8
 1. 18.55' S.C. to fence post.
 2. 13.20' S.W. to fence post.

GREENWOOD AVE.
 S.L. DONNELL - S.L. SCHRADER BROS. 30'
 30' CONC. I.C.B.
 CITY OF WICHITA, KANS.
 B.E. SMITH CITY ENGINEER
 AUG. 1953 PROJ. NO. C13-121

