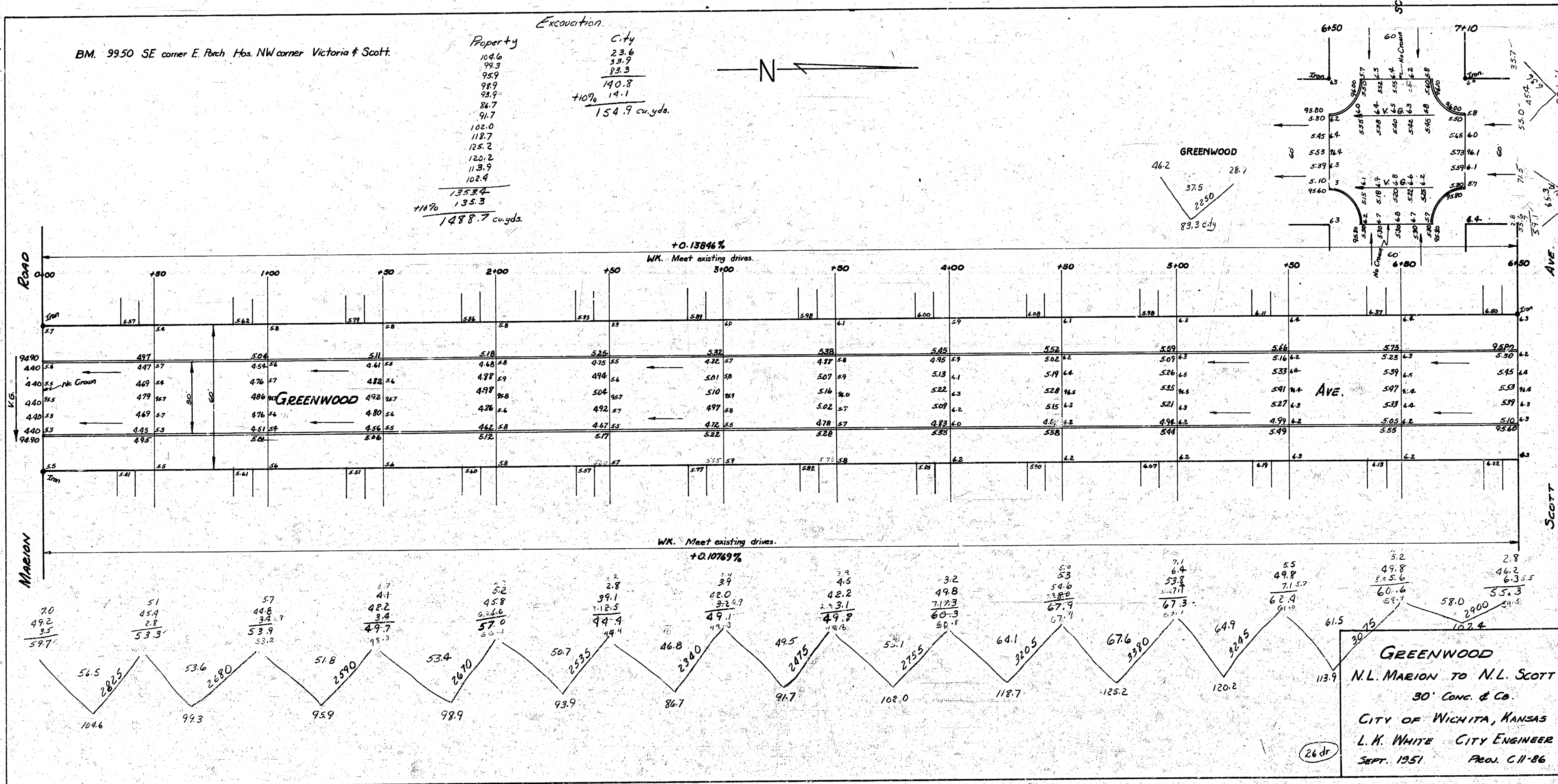
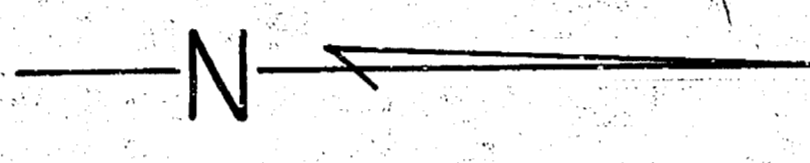


BM. 99.50 SE corner E. Birch Hts. NW corner Victoria & Scott.

Property	City
104.6	23.6
98.3	53.9
95.9	83.3
98.9	140.3
95.9	14.1
84.7	
91.7	
102.0	
118.7	
125.2	
120.2	
113.9	
102.4	
<u>1353.4</u>	
+11%	1488.7 cu.yds.

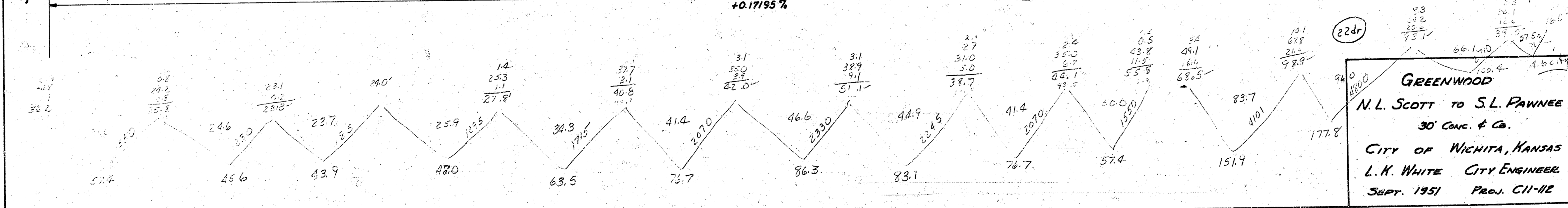
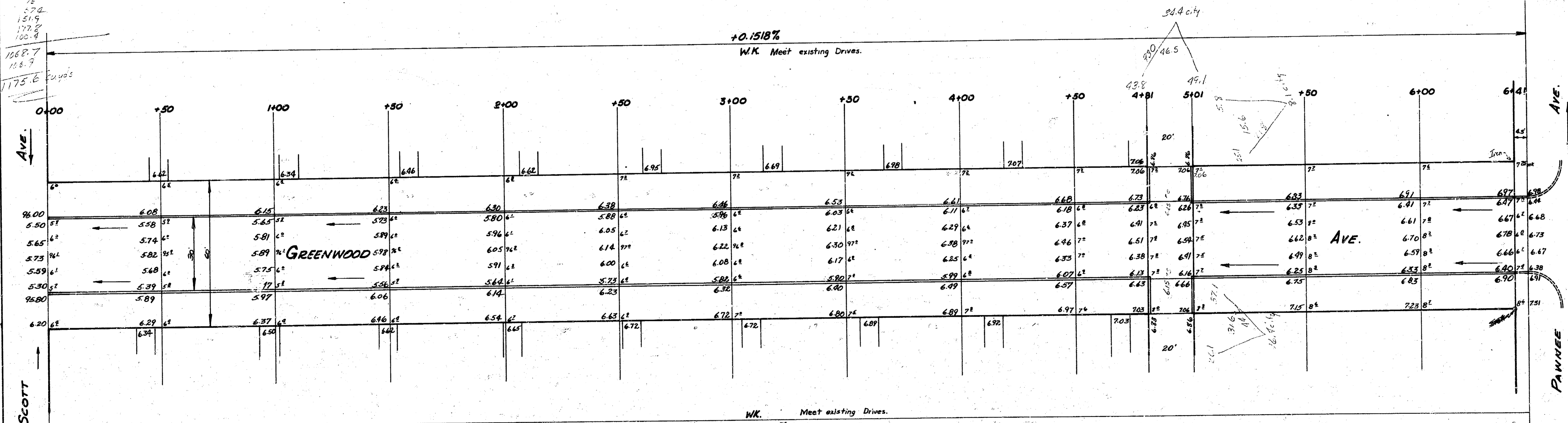
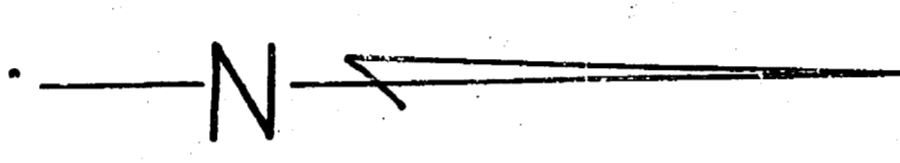


(26 dr)

H-7

57.4
 25.8
 48.4
 83.5
 32.7
 86.3
 53.1
 72.1
 27.2
 151.9
 172.8
 100.8
 1068.7
 116.7
 1175.6 cu yds

BM. 99.50 SE cor. E. Patch Hqs. NW cor. Victoria & Scott.
 B.M. 99.68 Top Hyd. M. in Mueller NW cor. Greenwood & Pawnee.



GREENWOOD
 N.L. SCOTT TO S.L. PAWNEE
 30' CONC. & CO.
 CITY OF WICHITA, KANSAS
 L. K. WHITE CITY ENGINEER
 SEPT. 1951 PROJ. C11-112