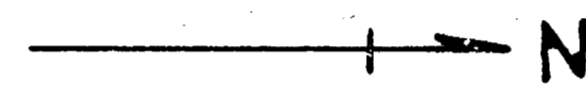


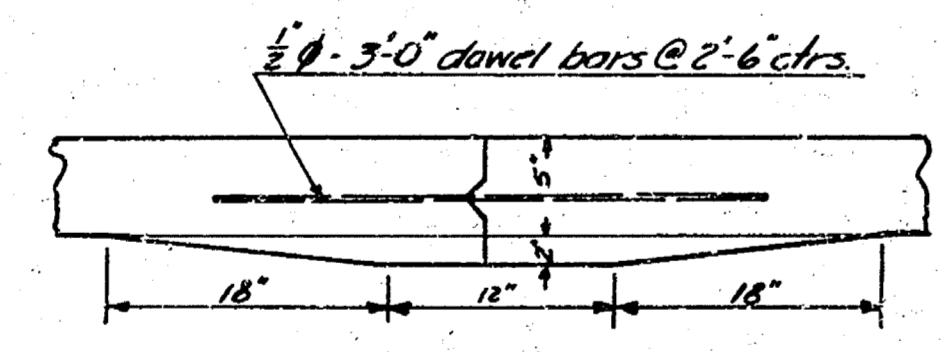
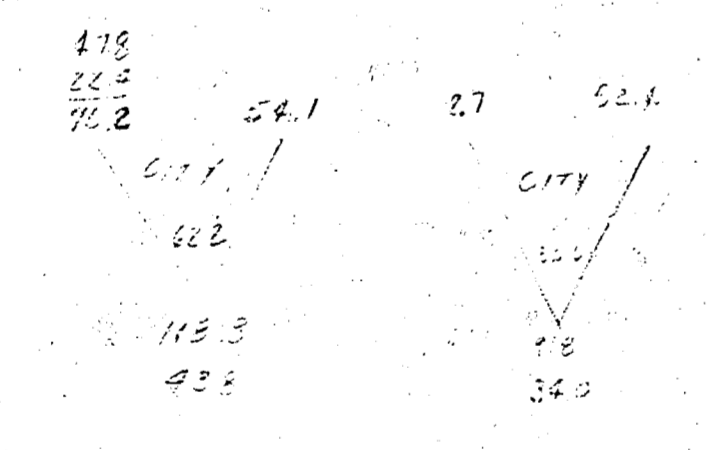
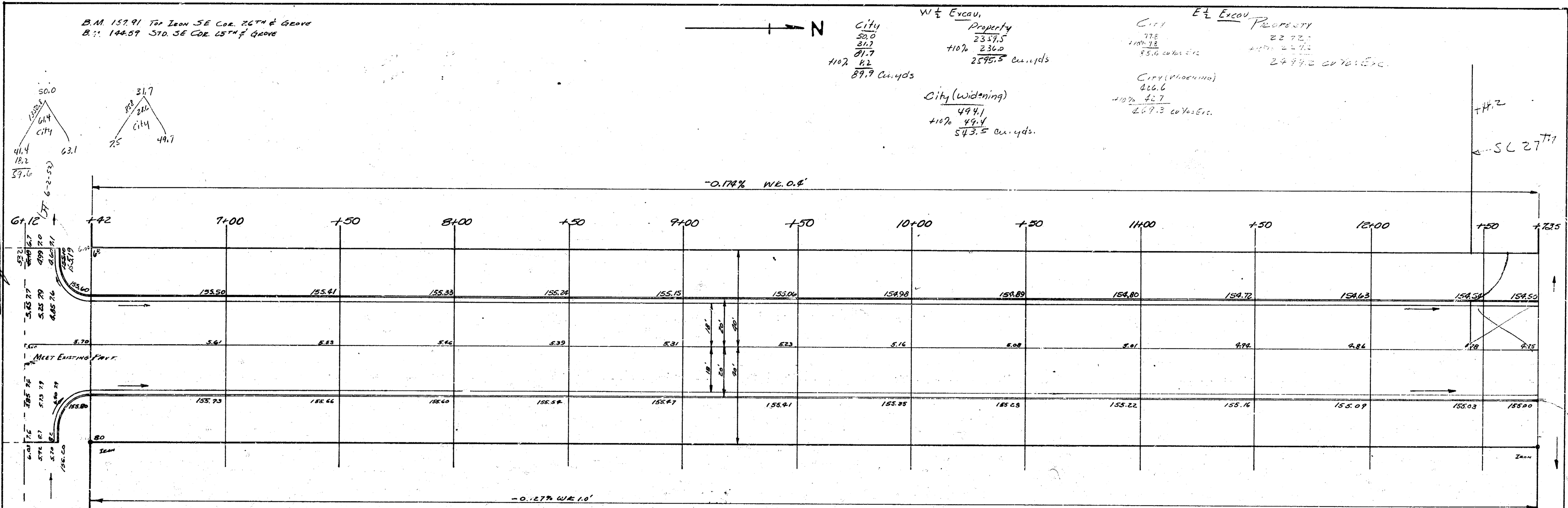
B.M. 157.91 To Iron SE Cor. 26th & Grove  
 B.M. 144.57 S.D. SE Cor. 15th & Grove



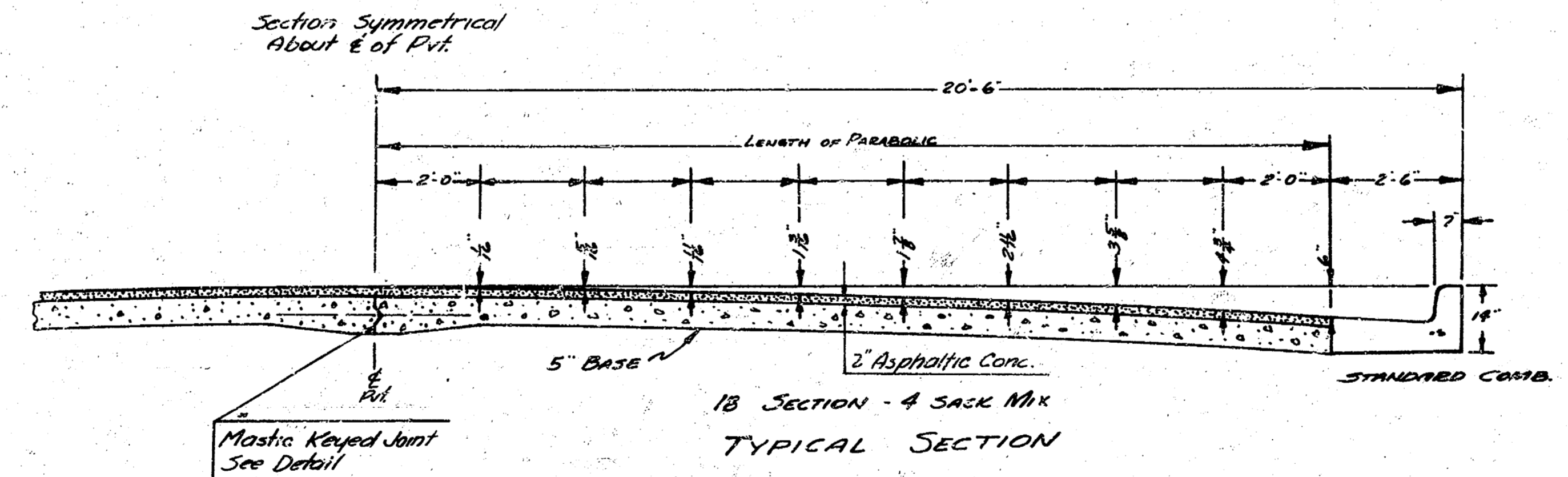
City	Excav. Property	City	Excav. Property
50.0	2337.5	77.8	2372.1
31.7	+10% 236.0	147.13	4271.2
91.7		55.0	1550.0
112.2	2575.5 cu. yds.		2297.0 cu. yds. Exc.
87.9 cu. yds.		City (widening)	
		494.1	
		+10% 49.4	
		543.5 cu. yds.	

Survey 3207  
 Plan 02  
 Br. 310  
 Dec. 1932  
 Checked  
 W.E.

Survey 3207  
 Plan 02  
 Br. 310  
 Dec. 1932  
 Checked  
 W.E.



Detail of Keyed Joint  
 No Scale



18 SECTION - 4 SACK MIX  
 TYPICAL SECTION

GROVE, W 1/2  
 N.L. 26th to S.L. 27th  
 13-2-15 A.C. WIDEN TO 20'  
 CITY OF WICHITA  
 B.E. SMITH CITY ENGINEER  
 MAY 1933 PROJ. C11-340, C11-341

GROVE, E 1/2  
 E 26th to S.L. 27th  
 13-2-15 A.C. WIDEN TO 20'  
 CITY OF WICHITA  
 L.K. WHITE CITY ENGINEER  
 OCT 1932 PROJ. C11-341, C11-342

