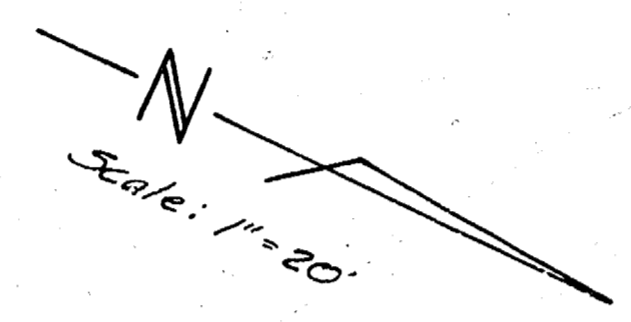
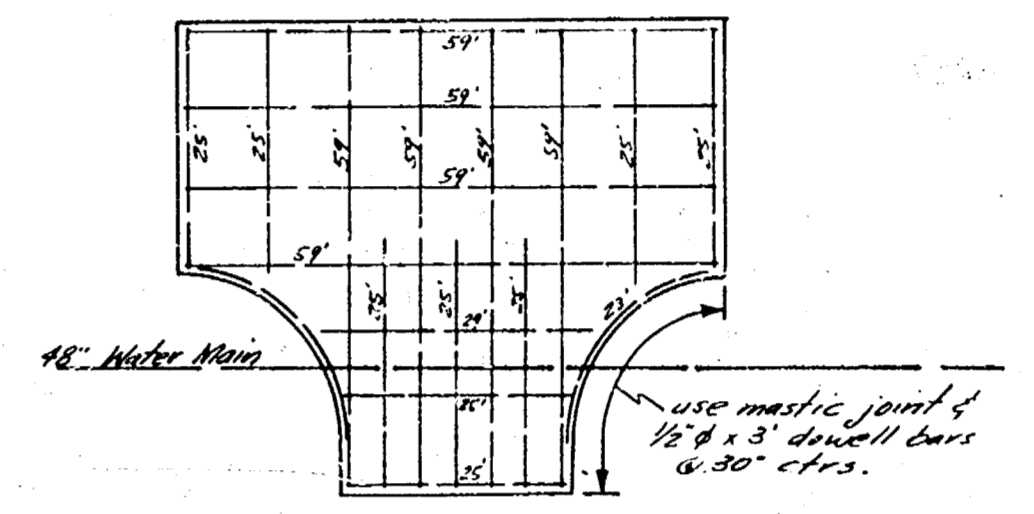


B.M. 131.94 N.E. Cor. Conc. Water box 150 S. of N.L. Berg. H. 16 2nd Add.  
 B.M. 128.99 N.W. Cor. porch Ho. S.E. Halstead of 25th



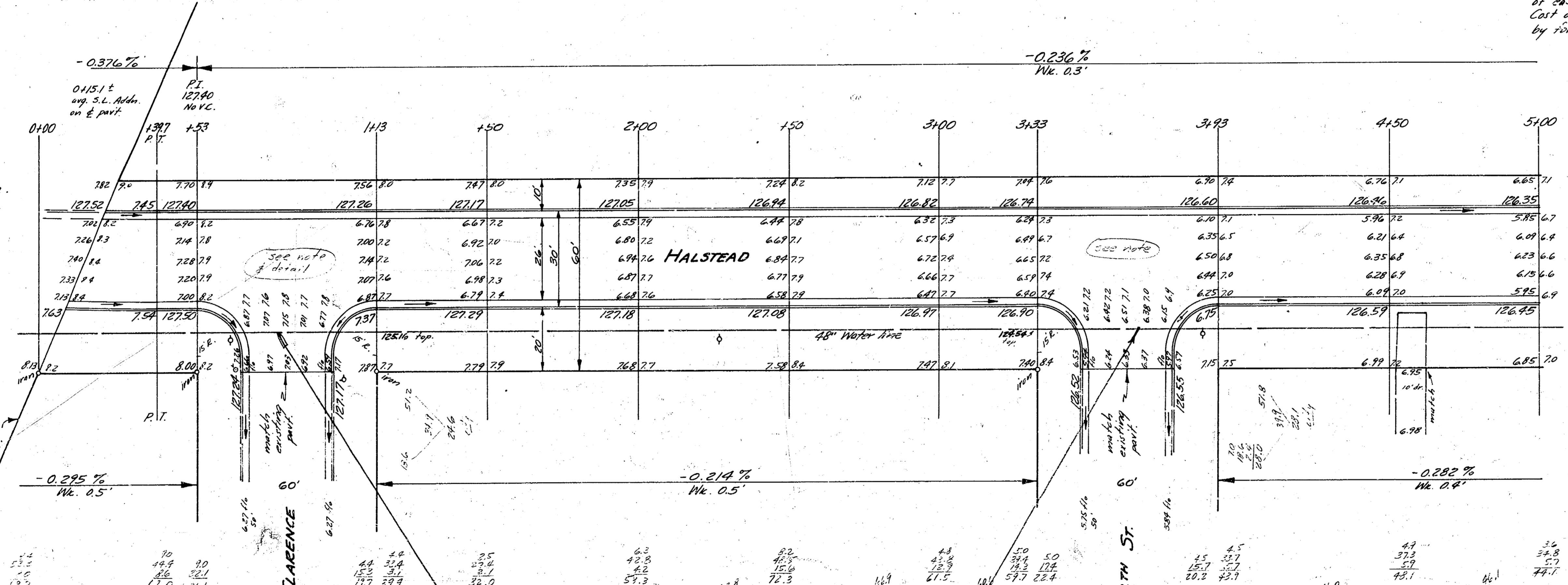
PROP.	EXIST.	C.C.
121.0	140.9	140.9
84.9	246.6	246.6
652.2	377.7	377.7
2323.5	410.7	410.7
110.7	415.5	415.5
2555.9	on yds.	on yds.



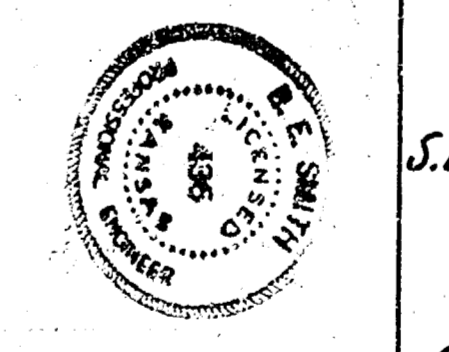
Reinf. Pattern @ Clearance of 24" St.  
 Note: Intersection returns east of east hi-edge to be 5' from base. Cost of extra cement to be paid by force account.

NOTE: See Halstead Plan Proj. No. C15-45 for curve data. P.T. of curve @ Sta. 01387

S.L. Riverlawn Heights Addition

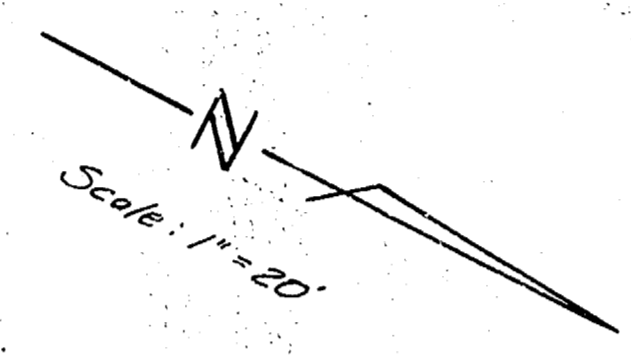


NOTE TO CONTRACTOR: No heavy equipment to be used in vicinity of 48" Water main. Use extreme caution when working near main. Emp. to flag line prior to construction.

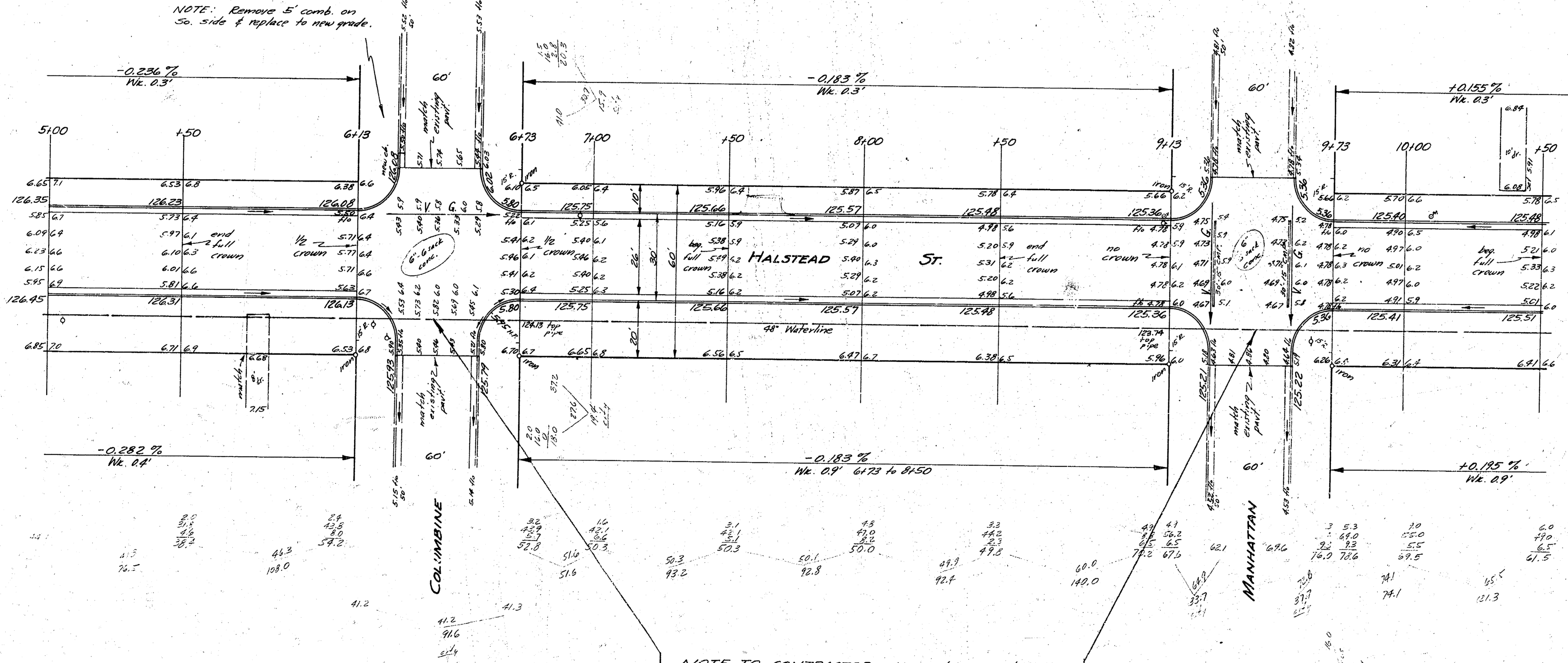


HALSTEAD ST.  
 S.L. RIVERLAWN HEIGHTS ADD. TO S.L. 25TH  
 26-2-30 A.C.  
 CITY OF WICHITA, KANSAS  
 B.E. SMITH - CITY ENGINEER  
 APRIL, 1957 PROJ. NO. C14-176

1/3



NOTE: Remove 5' comb. on So. side & replace to new grade.



NOTE TO CONTRACTOR: Use extreme caution in vicinity of 48" Water Main. No heavy equipment to be used in this area. Engr. to flag line prior to excavation.

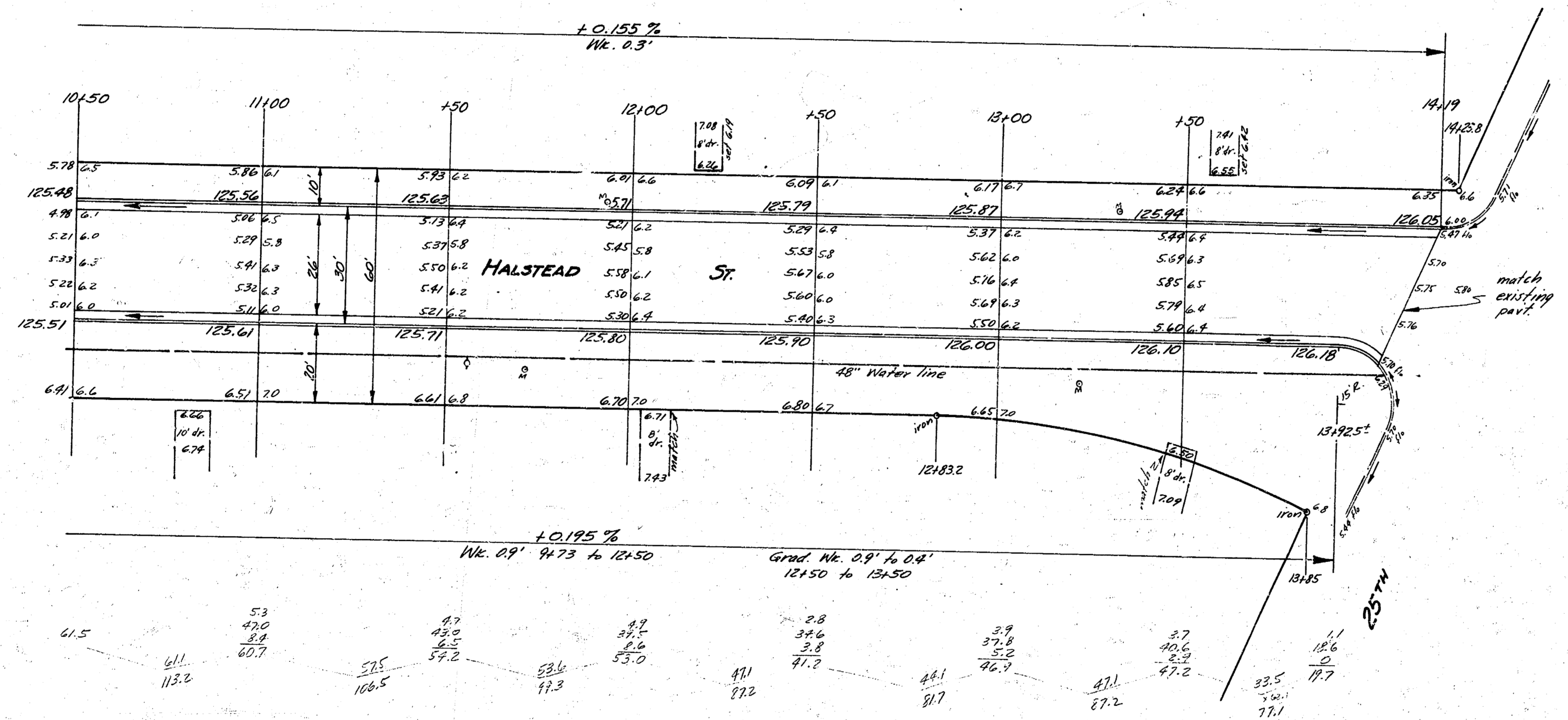
2  
3

HALSTEAD ST.  
PROJ. C14-176

B.M. 131.94 N.E. Cor. conc. water box, 150' S. of N.L. Benj. Hills 2nd Alley.  
 B.M. 128.99 N.W. Cor. porch Ho. S.E. Halstead of 25th

Prop. 652.2  
 E.C.C. 111  
 8

Scale: 1" = 20'



NOTE TO CONTRACTOR & FIELD ENGR.: Use extreme caution in vicinity of 48" Water Main. No heavy equipment to be used in this area. Expt. to flag line prior to excavating.

3  
3

HALSTEAD ST.  
 Proj. CIA-176