

Curve Data Based on W. E. R=265.77 Δ=41° 03'  
Min per Ft of Arc = 06.6675

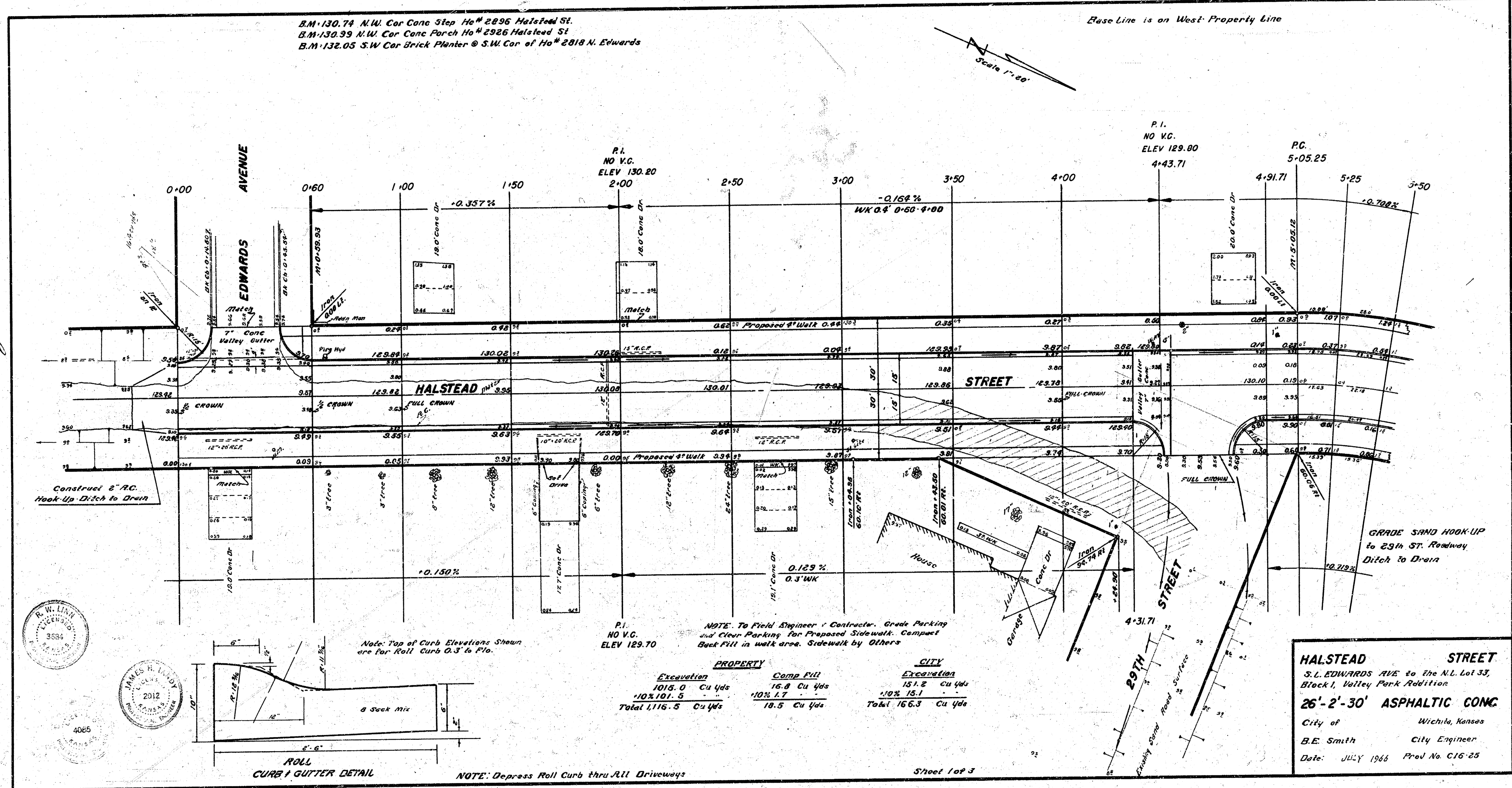
Station	Arc	Chord Length	Deflection	Total Deflection
P.C. 5+05.12				0° 00' 00"
5+25	19.88	15.35	2° 08' 36"	2° 08' 36"
5+50	25.0	20.00	2° 41' 41"	4° 50' 17"
5+75	25.0	20.00	2° 41' 41"	7° 31' 58"
P.T. 6+02.76	27.64	22.21	2° 53' 32"	10° 31' 30"

Curve Data Based on W. E. R=100.00 Δ=31° 30'  
Min per Ft of Arc = 17.1887

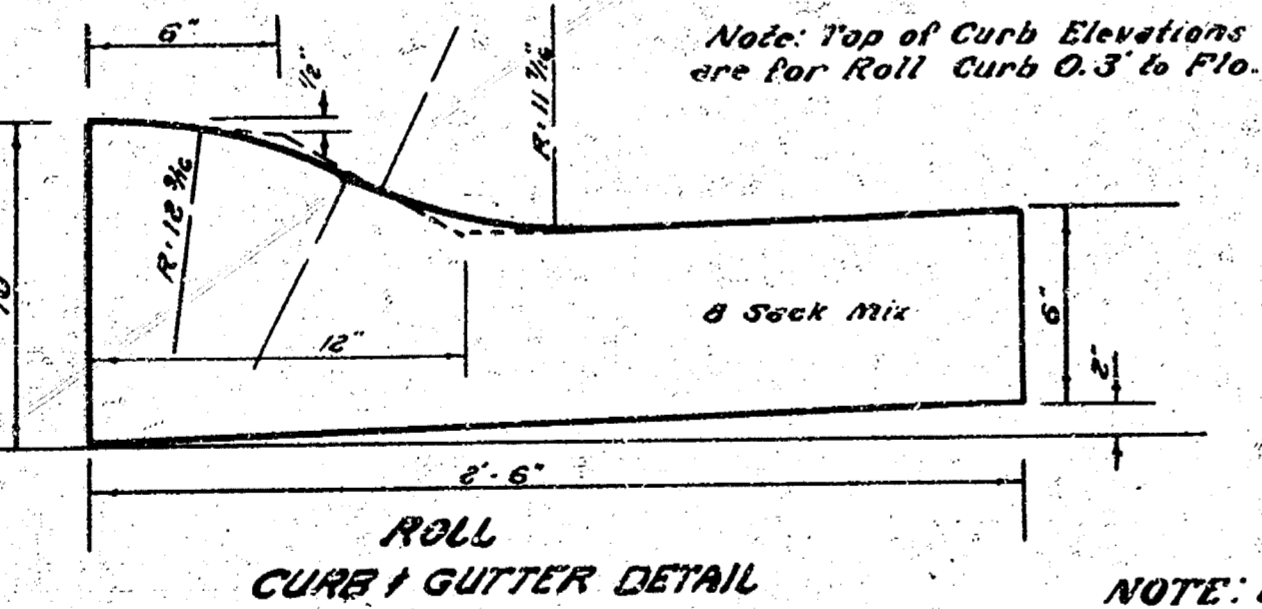
Station	Arc	Chord Length	Deflection	Total Deflection
P.C. 7+64.30				0° 00' 00"
7+75.0	10.70	9.94	3° 03' 54"	3° 03' 54"
8+00.0	25.0	23.19	7° 09' 43"	10° 13' 37"
8+21.58	21.58	20.03	6° 10' 37"	16° 24' 34"

B.M. 130.74 N.W. Cor Conc Step Ho<sup>m</sup> 2896 Halstead St.  
 B.M. 130.99 N.W. Cor Conc Patch Ho<sup>m</sup> 2926 Halstead St.  
 B.M. 132.05 S.W. Cor Brick Planter @ S.W. Cor of Ho<sup>m</sup> 2818 N. Edwards

Base Line is on West Property Line



Surveyed by  
 Plan  
 Excavation  
 Director



Note: Top of Curb Elevations Shown are for Roll Curb 0.3' to P.O.

NOTE: Depress Roll Curb thru ALL Driveways

P.I.  
NO V.C.  
ELEV 129.70

NOTE: To Field Engineer / Contractor. Grade Parking and Clear Parking for Proposed Sidewalk. Compact Best Fill in walk area. Sidewalk by Others

PROPERTY		CITY	
Excavation	Comp Fill	Excavation	Comp Fill
1015.0 Cu Yds	16.8 Cu Yds	151.2 cu yds	
10% 101.5	10% 1.7	10% 15.1	
Total 1116.5 Cu Yds	18.5 Cu Yds	Total 166.3 Cu Yds	

**HALSTEAD STREET**  
 S.L. EDWARDS AVE to the N.E. Lot 33,  
 Block 1, Valley Park Addition  
**26'-2'-30' ASPHALTIC CONC**  
 City of Wichita, Kansas  
 B.E. Smith City Engineer  
 Date: JULY 1966 Prod No. C16-25

Sheet 1 of 3