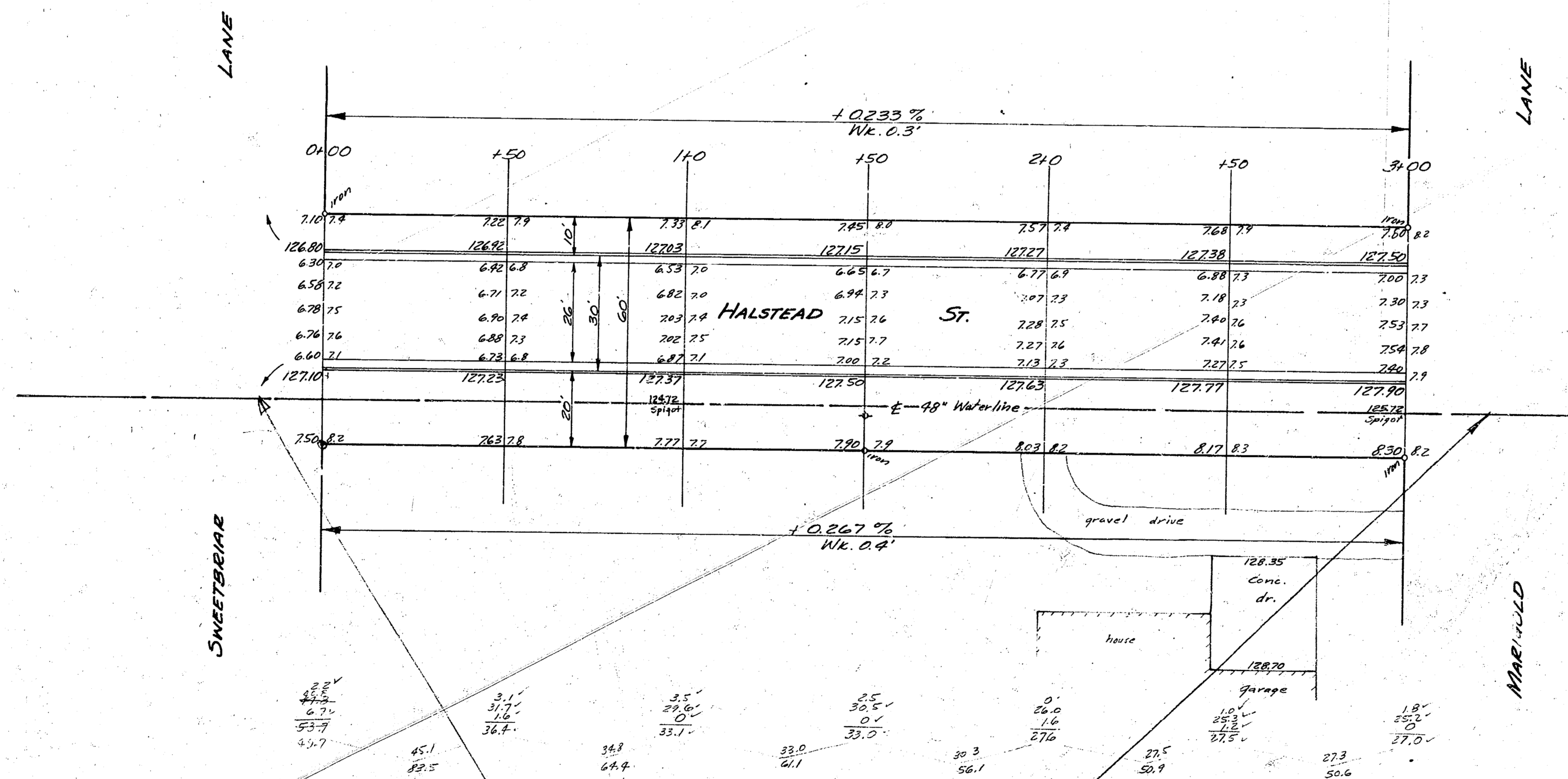


B.M. 131.94 N.E. Cor. Conc. Water Box 150" S. of N.L. Benj. Hills 2nd Addn.
 Stationing on 6' offset from face west curb.

Prop.	Total Est.
346.0	35.7
655.9	125.76
1022.5	98.3 cu. yds.
1107.6	
1184.8 cu. yds.	



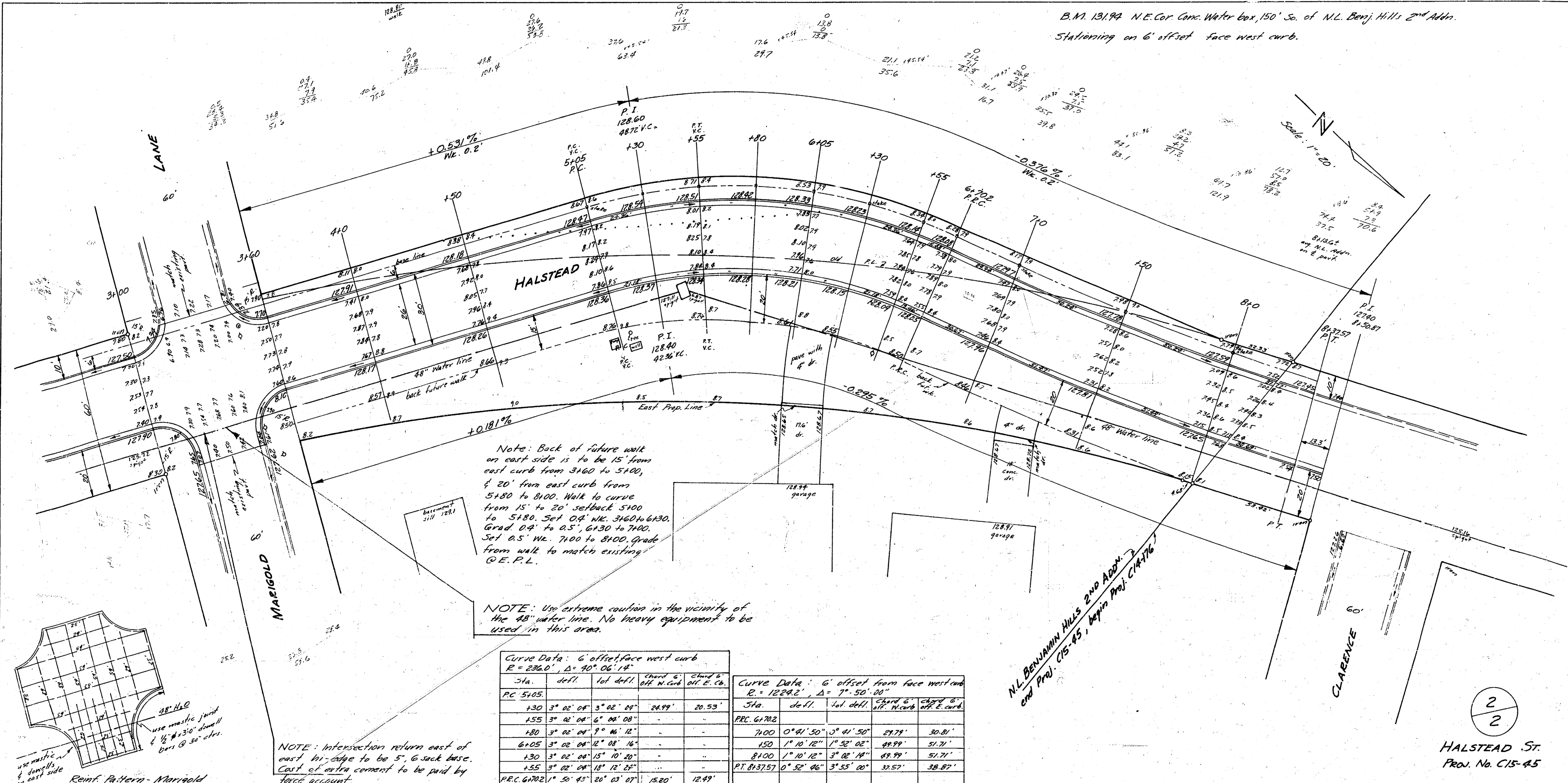
NOTE: Use extreme caution in the vicinity of the 48" water line. No heavy equipment to be used in this area. Expt. to flag line prior to excavation.

HALSTEAD ST.
 N.L. SWEETBRIAR LANE TO
 N.L. BENJAMIN HILLS 2ND ADDN.
 26-2-30 A.C.
 CITY OF WICHITA, KANSAS.
 B.E. SMITH - CITY ENGINEER
 APRIL, 1957 PROJ. No. C15-45

1
2

City of Wichita
 Engineering
 Division

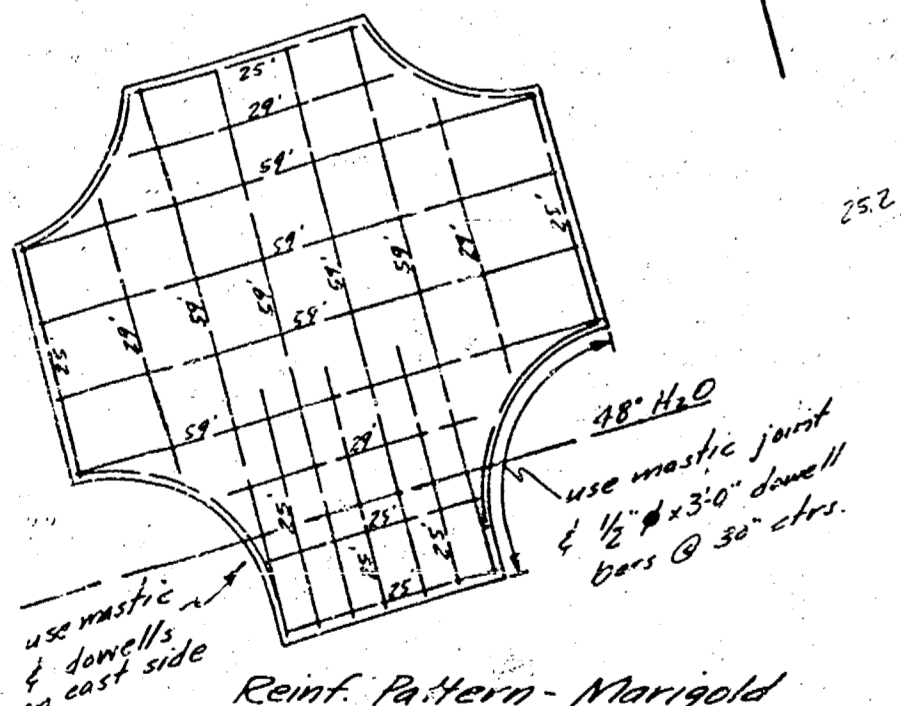
B.M. 1319A N.E. Cor. Care Water box, 150' So. of N.L. Benj. Hills 2nd Adm.
 Stationing on 6' offset face west curb.



Note: Back of future wall on east side is to be 15' from east curb from 3160 to 3100, & 20' from east curb from 3180 to 8100. Walk to curve from 15' to 20' setback 5100 to 5180. Set O.P. No. 360 to 6130. Grad 0.4% to 0.5% to 7100. Set A.S. No. 7100 to 8100. Grad from wall to match existing @ E.P.L.

NOTE: Use extreme caution in the vicinity of the 48" water line. No heavy equipment to be used in this area.

Curve Data: 6' offset face west curb E = 236.0', Δ = 30° 06' 14"					Curve Data: 6' offset from face west curb E = 1228.2', Δ = 7° 50' 00"				
Sta.	defl.	tot. defl.	chord & dist. to P.C.	chord & dist. to P.T.	Sta.	defl.	tot. defl.	chord & dist. to P.C.	chord & dist. to P.T.
P.C. 5105					P.C. 6170				
130	3° 02' 04"	3° 02' 04"	24.99'	20.53'	7100	0° 41' 50"	3° 41' 50"	69.78'	30.81'
155	3° 02' 04"	6° 04' 08"			150	1° 10' 12"	1° 52' 02"	89.99'	51.71'
180	3° 02' 04"	9° 06' 12"			8100	1° 10' 12"	3° 02' 18"	89.99'	51.71'
6105	3° 02' 04"	12° 08' 16"			P.T. 6172	0° 52' 06"	3° 55' 00"	31.57'	38.87'
130	3° 02' 04"	15° 10' 20"							
155	3° 02' 04"	18° 12' 24"							
P.T. 6172	1° 50' 43"	20° 03' 07"	15.80'	12.49'					



NOTE: Intersection return east of east 1/4" curb to be 5' 6" back base. Cost of extra cement to be paid by owner.

N.L. Benj. Hills 2nd Adm.
 Proj. C15-45, Approx. Proj. C15-46

HALSTEAD ST.
 Proj. No. C15-45