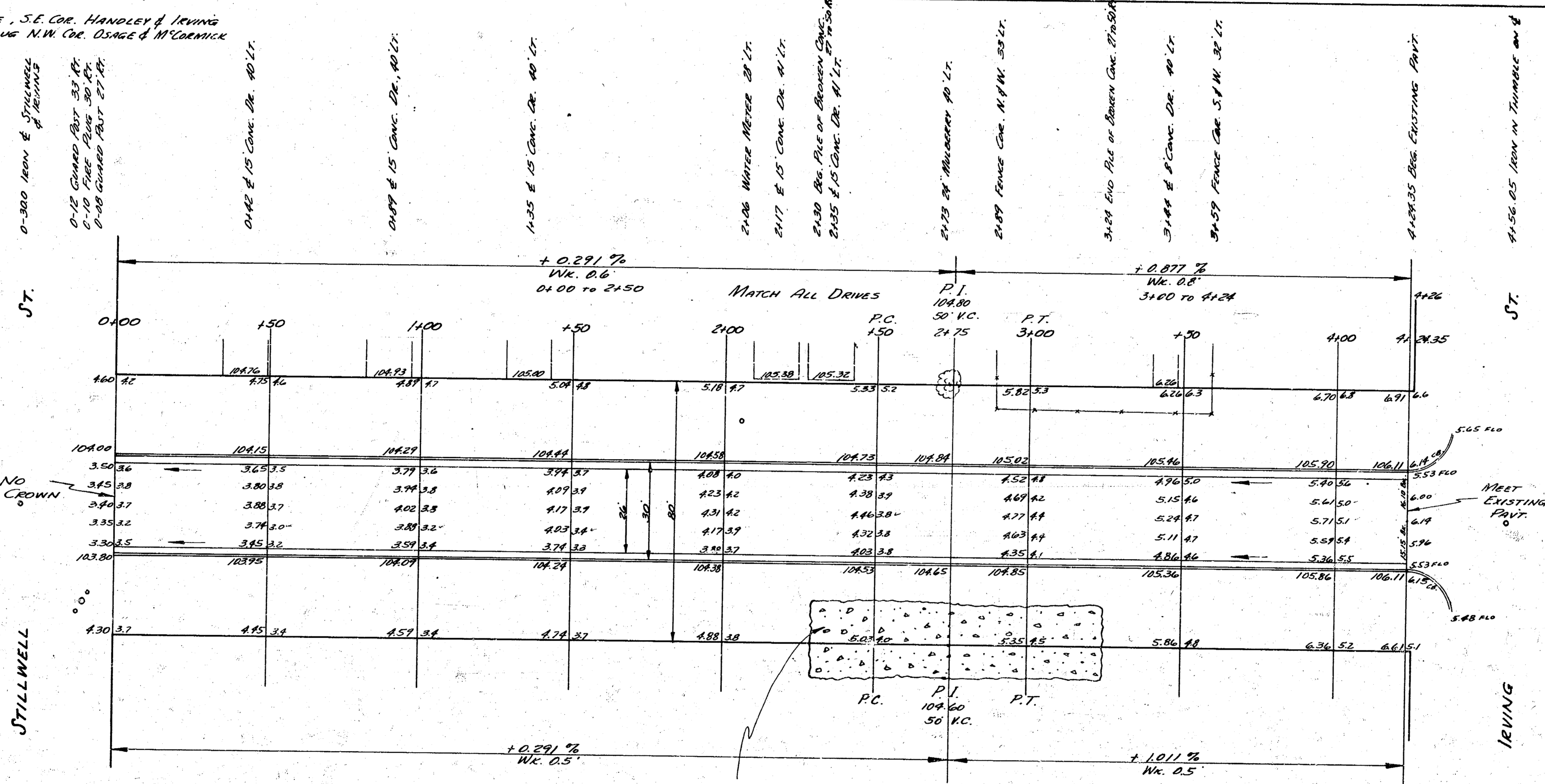


B.M. 107.16 Spike in S. Side Tel. Pole, S.E. Cor. Handley & Irving
 B.M. 108.58 "M" in Mueller Fire Plug N.W. Cor. Osage & McCormick

CHAINING N. ON E



ST.

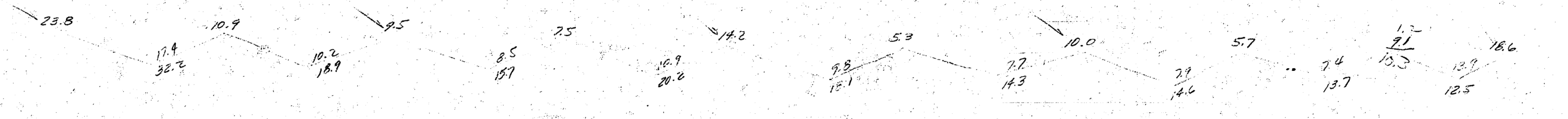
ST.

STILLWELL

IRVING

NOTE: BROKEN CONCRETE TO BE REMOVED BY COUNTY.

BUREAU OF HIGHWAYS
 DIVISION OF HIGHWAYS
 WICHITA, KANSAS



HANDLEY
 N.L. STILLWELL TO S.L. IRVING
 26-2-30 A.C.
 CITY OF WICHITA, KANSAS
 B.E. SMITH - CITY ENGINEER
 AUGUST, 1933 - PROJ. C13-76



ENC. CITY
 100.2
 100.2
 176.2 cu. yds.