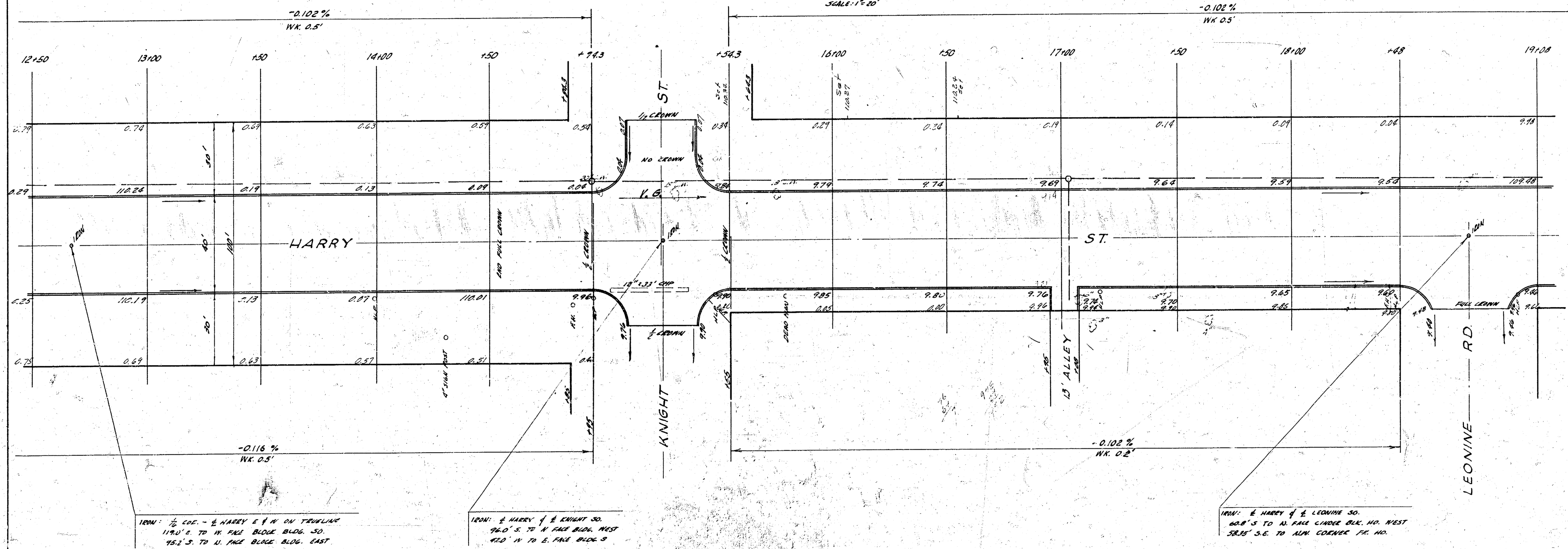


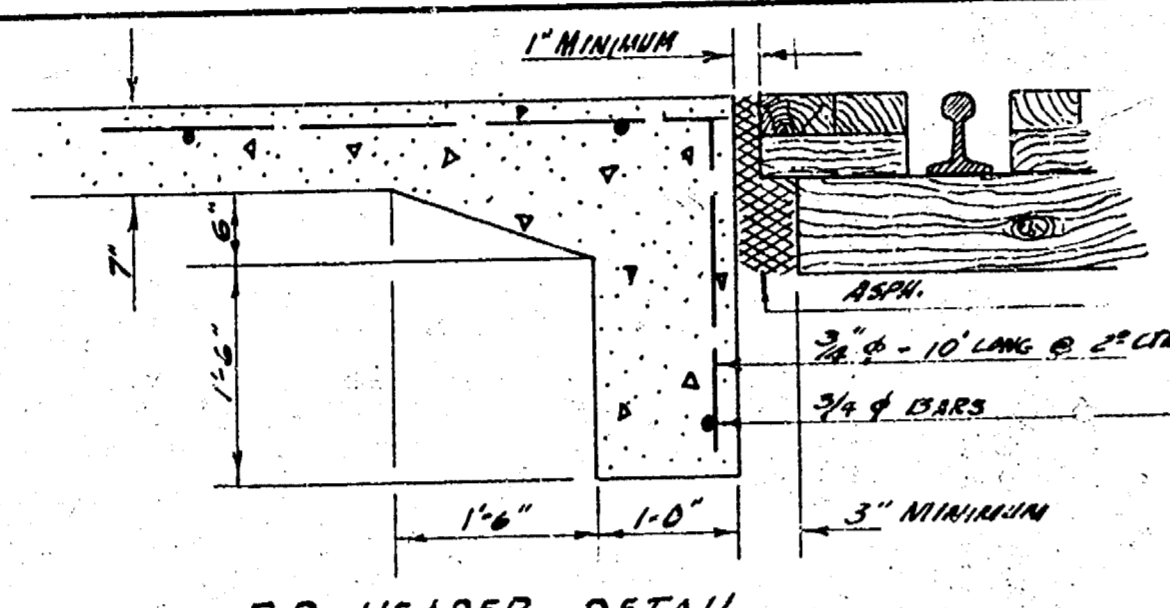
B.M. 111.842 N.W. COR. CONC. PAVEN - S.W. COR. KNIGHT & HARRY



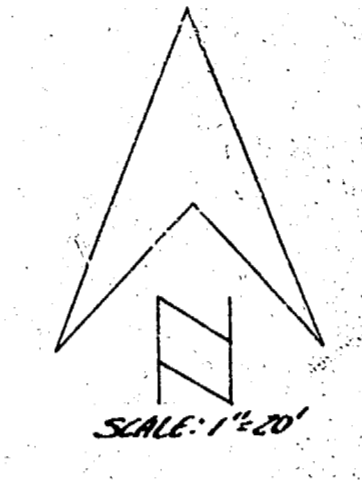
HARRY ST.
PROJ. NO. C-15-271



B.M. 110.12 RE SPINE NS K.L.P. S.E. COR. LEADING RD. of HARRY ST.
 B.M. 109.23 STD. 5/8" DIA. SURVEY of HARRY



180' ± HARRY of ALL ALLOWED
 44' S.W. TO CTR. R.M.
 20' ± S.E. TO 15' PIPE GAS METER



180' ± HARRY of 40' N x 30' SIDING
 30' S.E. TO FACE HLP
 24' N. TO FACE HLP
 20' S.E. TO FACE HLP

180' ± HARRY of 40' N x 30' SIDING
 45' S.W. TO FACE HLP
 20' S.E. TO FACE HLP

