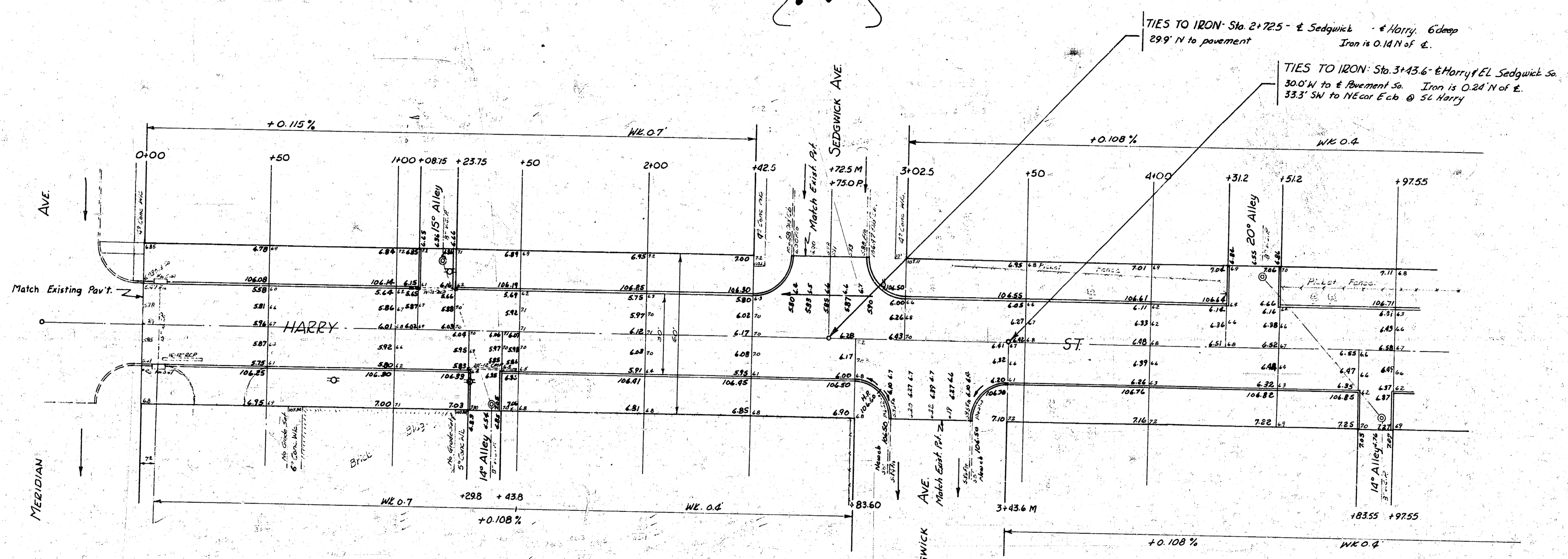


BM = 106.736 Standard NW cor. Meridian & Harry
 Stationing on E. Distances pro-rated from actual measurements in field.

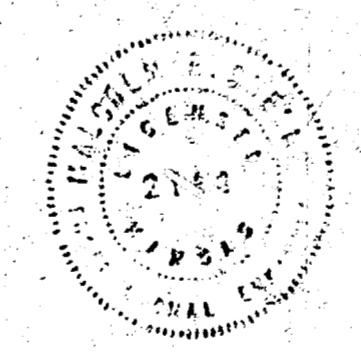


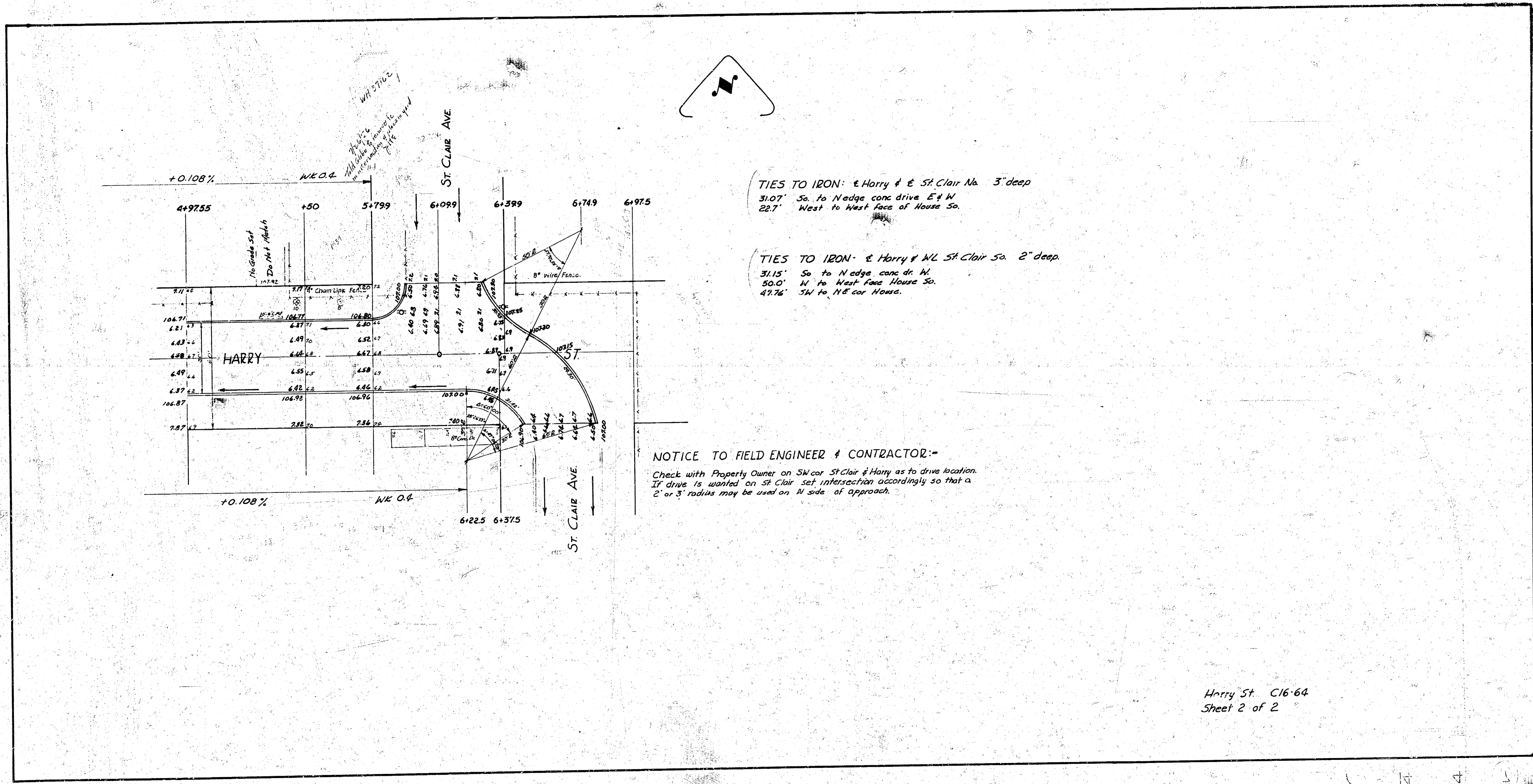
Jimmy Young - Bk. 7207
 Exc. Grading
 Checked 7/7

NOTICE TO CONTRACTOR & FIELD ENGINEER
 All entrance pipes are to be disposed of in accordance
 with instructions of City Dirt Checker.

Sheet 1 of 2

HARRY ST
 EL Meridan to EL St Clair
 30" Concr Cb
 CITY OF WICHITA, KANSAS
 B.E. SMITH CITY ENGINEER
 JUNE 1952 PROJ. NO. C16-64





TIES TO IRON: Harry & St. Clair No. 3" deep
 31.07' So. to N edge conc drive E & W
 22.7' West to West Face of House So.

TIES TO IRON: Harry & W. St. Clair So. 2" deep
 31.15' So. to N edge conc dr. W.
 50.0' W to West Face House So.
 49.76' SW to NE cor House.

NOTICE TO FIELD ENGINEER & CONTRACTOR:-
 Check with Property Owner on SW cor St. Clair & Harry as to drive location.
 If drive is located on St. Clair set intersection accordingly so that a
 2' or 3' radius may be used on N side of approach.

Harry St. C16-64
 Sheet 2 of 2