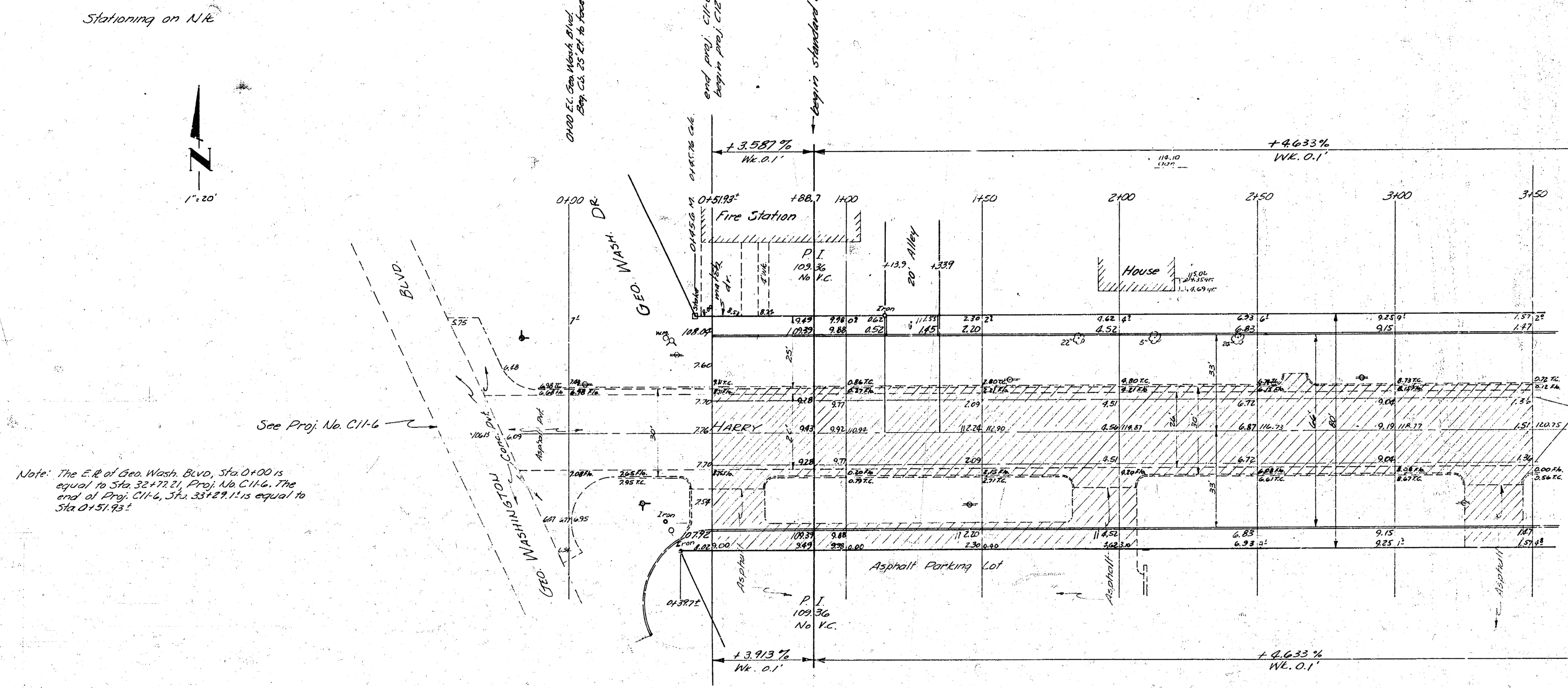


8.74, 103.92' X on S and N Coping conc. culvert W.S. Geo. Wash Blvd, 200' N. of Harry
 6.74, 108.45' N.E. cor. conc. base, Signal Light, S.E. cor. Geo. Wash Blvd & Harry

Stationing on N.E.

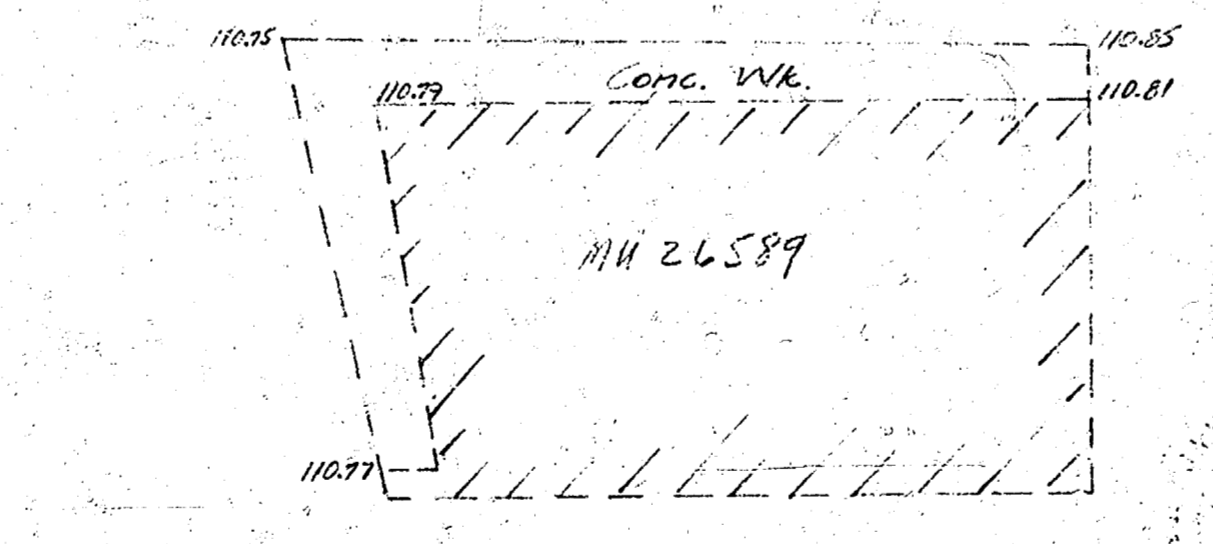
Prop.	City	Year	City
1957	Wichita	1978	Wichita
1957	Wichita	1978	Wichita
1200' in g.c.	457'	1700' in g.c.	457'

Survey Copy
 BK 2
 P. 10
 1/10/57



Note: The E.P. of Geo. Wash Blvd, Sta 0+00 is equal to Sta 32+72.21, Proj. No. C11-6. The end of Proj. C11-6, Sta. 33+23.11 is equal to Sta 0+51.93.

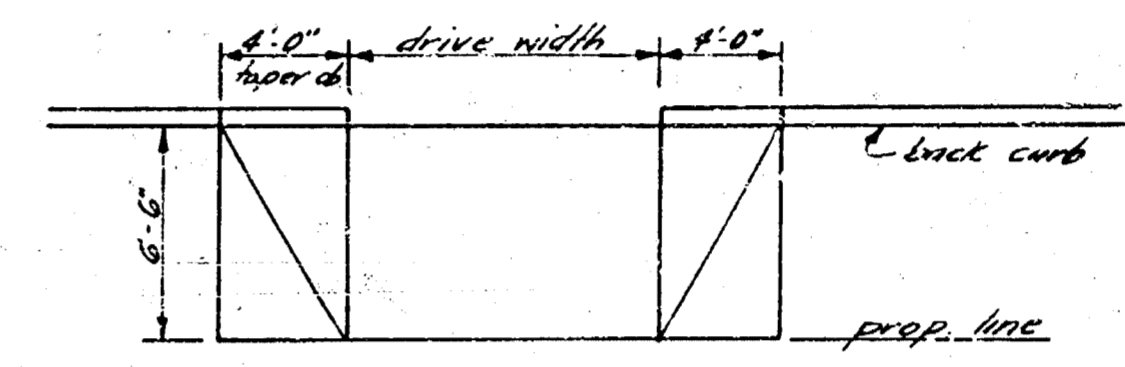
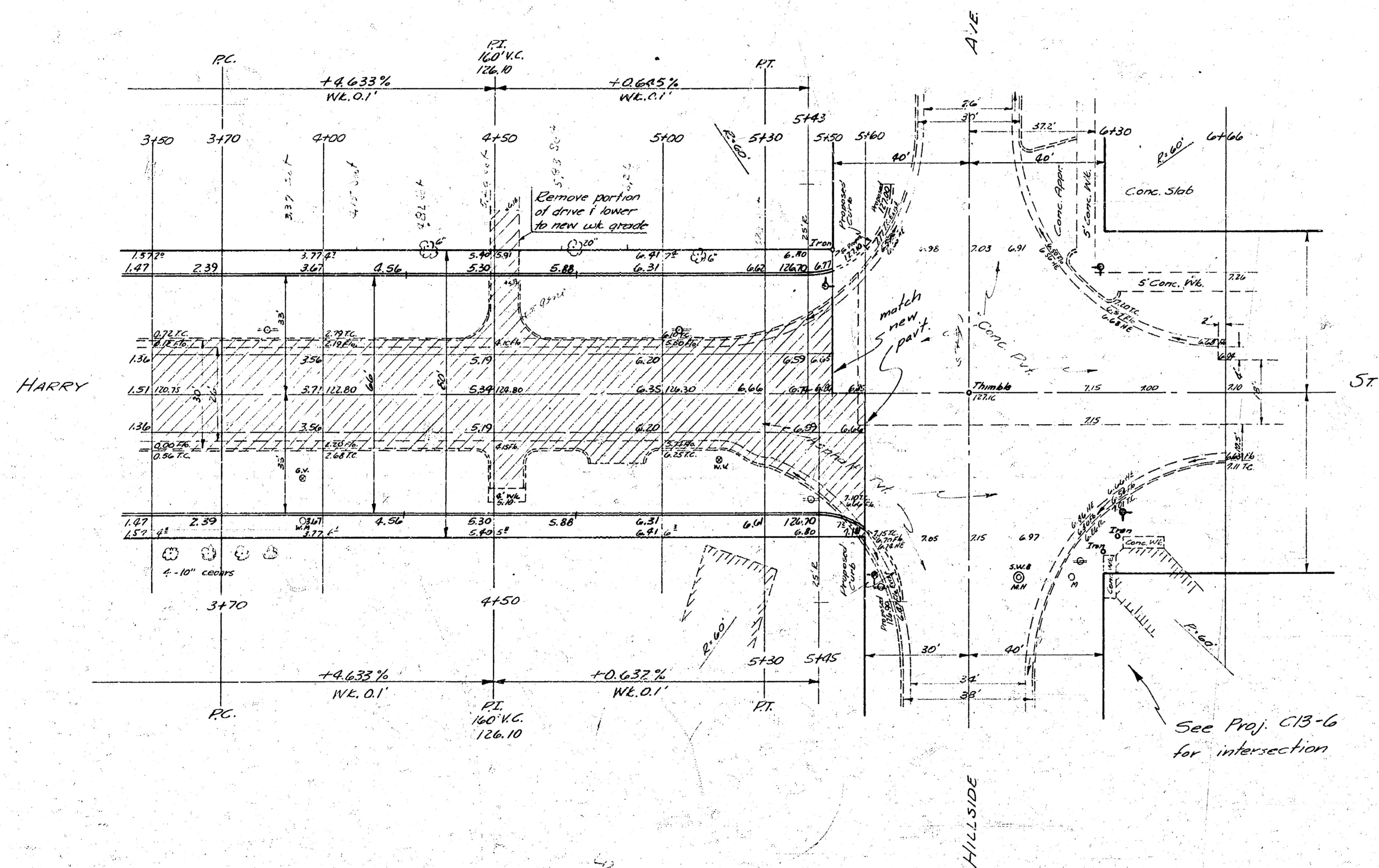
See Proj. No. C11-6



2
4

HARRY ST.
 E.L. GEO. WASH BLVD TO W.L. HILLSIDE
 66'-8" CONC. & C.B.
 CITY OF WICHITA, KANSAS
 B.E. SMITH CITY ENGINEER
 AUG. 1957 PROJ. NO. C12-229

B.M. 127.13 - Top of Thumb - center of Hillside & Harry Inter.
 B.M. 127.82 - S end W Gas Island, Filling Sta, NE Cor Hillside & Harry



RAMP DRIVE DETAIL
 No Scale
 All driveways to be this type.

HARRY ST
 Proj. No. CIB-229