

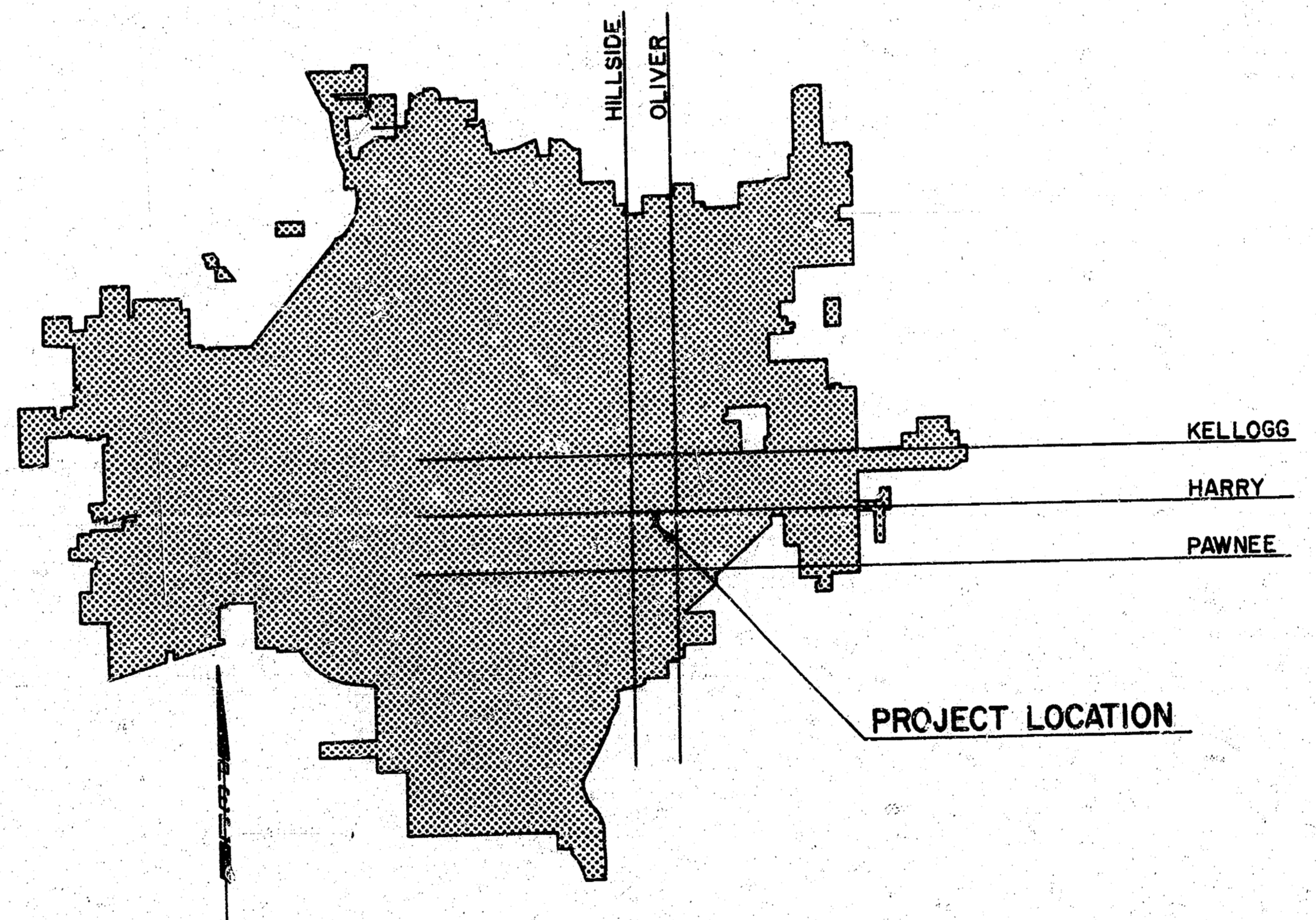
# CONSTRUCTION PLANS FOR HARRY STREET IMPROVEMENTS

DECELERATION LANE ON SOUTH SIDE OF  
HARRY STREET FROM A POINT 200 WEST OF THE  
WEST LINE OF GEORGETOWN II ADDITION TO  
THE WEST LINE LOT 1, BLOCK 2, GEORGETOWN II ADD.

**THE CITY OF WICHITA,  
SEDGWICK COUNTY, KANSAS**  
MIKE LINDEBAK, P.E., CITY ENGINEER

INDEX OF SHEETS

SHEET NO. 1	TITLE SHEET
" 2	GENERAL PROJ. INFO.
" 3	TYPICAL SECTS. & PAVING DET.
" 4	PAVING PLAN STA. 25+27.32 TO STA. 29+00
" 5	" " STA. 29+00 TO STA. 32+20.15



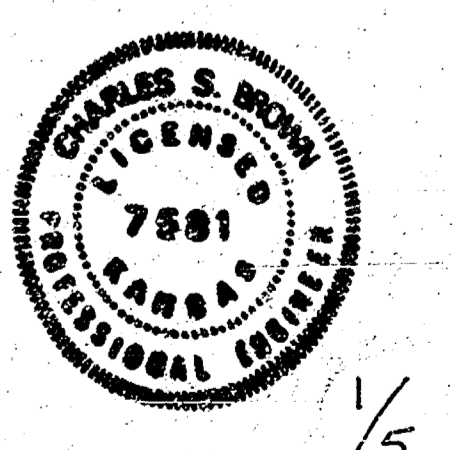
LOCATION MAP

CITY OF WICHITA PROJECT NO. 472-76-245-81327-000-000-001

JANUARY 1984

PLANS PREPARED BY

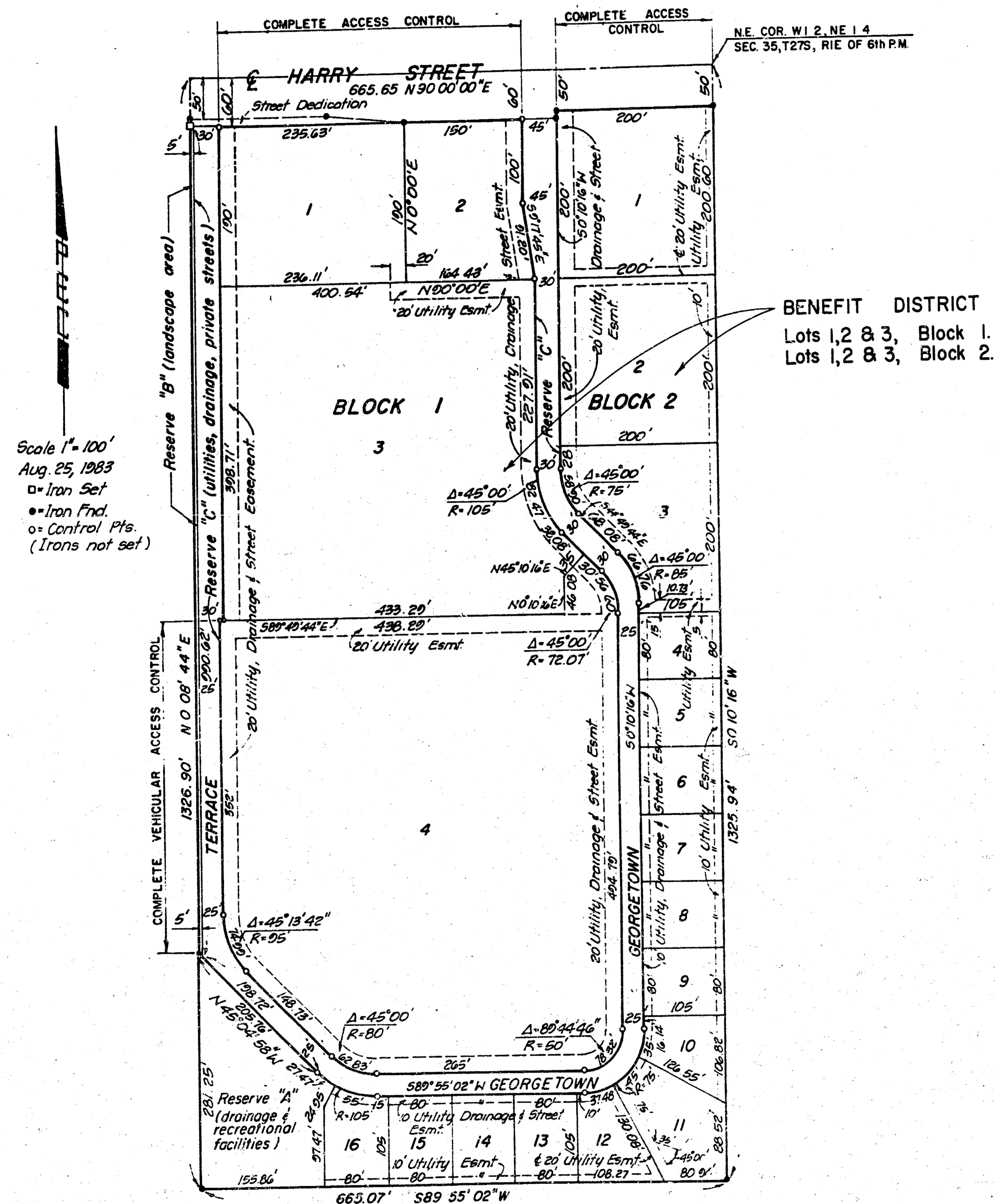
**PROFESSIONAL ENGINEERING CONSULTANTS, P.A.  
ENGINEERS  
WICHITA, KANSAS**



FILMED FROM THE BEST  
AVAILABLE COPY

# GEORGETOWN II

## Wichita, Sedgwick County, Kansas.



Scale 1" = 100'  
 Aug. 25, 1983  
 • Iron Set  
 • Iron Fnd.  
 • Control Pts.  
 (Irons not set)

BENEFIT DISTRICT  
 Lots 1, 2 & 3, Block 1.  
 Lots 1, 2 & 3, Block 2.

### BENCH MARKS

- BM #4 SOUTH RM OF MANHOLE LOCATED IN LOT 13, BLOCK 2, GEORGETOWN II ADDITION. EL. = 136.74
- BM #5 CHISELED "C" ON TOP OF CURB, SOUTH SIDE OF HARRY STREET, 101' WEST OF WEST PROPERTY LINE OF GEORGETOWN II ADDITION. EL. = 155.69
- BM #6 RAILROAD SPIKE ON EAST SIDE OF POWER POLE, NORTH SIDE OF HARRY STREET, 58.5' EAST OF WEST LINE OF GEORGETOWN II ADDITION. EL. = 155.395
- CITY BM BENCH MARK DISC ON WEST END OF NORTH HUBGUARD ON RCB, APPROXIMATELY 150' EAST OF OLIVER AND HARRY STREETS. EL. = 142.433

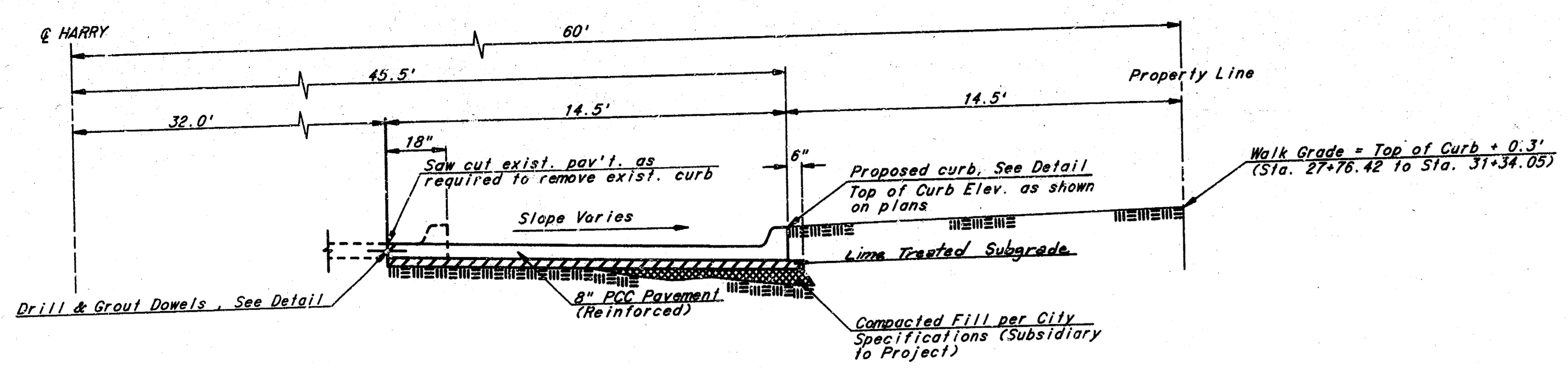
### GENERAL NOTES

1. ALL ELEVATIONS BASED ON CITY OF WICHITA DATUM. (MEAN SEA LEVEL - 1187.4)
2. ALL CONSTRUCTION METHODS AND MATERIALS SHALL BE IN ACCORDANCE WITH THE CITY OF WICHITA STANDARD SPECIFICATIONS UNLESS OTHERWISE NOTED ON THE PLANS.
3. THE CONTRACTOR SHALL NOTIFY EACH OF THE FOLLOWING UTILITY COMPANIES PRIOR TO THE BEGINNING OF CONSTRUCTION AND SHALL REQUEST THAT ALL EXISTING LINES BE FLAGGED:
 

KANSAS GAS & ELECTRIC COMPANY 1900 EAST CENTRAL 264-1111 (E.T. 248) JERRY LANE	CITY OF WICHITA WATER DEPT. 455 N. MAIN STREET 268-4555, BENNY GEGEN
SOUTHWESTERN BELL TELEPHONE 154 NORTH BROADWAY 262-5500	CITY OF WICHITA PUBLIC WORKS ENGINEERING DEPARTMENT 455 NORTH MAIN STREET 268-4501, DON SCHNEIDER
GAS SERVICE COMPANY 1021 E 26TH RD. 263-7511, GENE CURLESS	AIR CAPITAL CABLEVISION 705 N. BROADWAY 276-2889
4. THE CONTRACTOR MUST ALSO NOTIFY THE TELEPHONE COMPANY 24 HOURS PRIOR TO BEGINNING ANY CONSTRUCTION WORK NEAR BURIED TELEPHONE LINES.
5. THE CONTRACTOR SHALL BEGIN WORK WITHIN 20 CALENDAR DAYS AFTER THE CONTRACT IS AWARDED AND SHALL COMPLETE THE WORK WITHIN 60 CALENDAR DAYS THEREAFTER. FAILURE TO COMPLETE THE WORK WITHIN THE ALLOTTED TIME WILL RESULT IN THE CONTRACTOR BEING SUBJECT TO LIQUIDATED DAMAGES IN THE AMOUNT OF \$400 PER DAY.
6. THE CONTRACTOR WILL BE REQUIRED TO COORDINATE HIS WORK WITH OTHER CONTRACTORS ON THE PROJECT SITE, SUCH AS CONTRACTORS FOR SANITARY SEWER, WATER, DETENTION POND, STORM SEWER, AND PRIVATE STREET IMPROVEMENTS.
7. EXCESS MATERIAL SHALL BE EMBANKED ON SITE AS DIRECTED BY THE ENGINEER.
8. BROKEN CONCRETE REMOVED BY THE CONTRACTOR SHALL BE STOCKPILED FOR USE BY OTHER CONTRACTORS IF SUITABLE FOR RIPRAP. STOCKPILE SHALL BE LOCATED ON LOT 16, BLOCK 2.
9. CONCRETE DRIVE LOCATED 26' LEFT OF STA. 33+72 SHALL REMAIN OPEN UNTIL GEORGETOWN DRIVE AND ITS INTERSECTION WITH HARRY STREET ARE OPEN TO TRAFFIC. UPON CLOSING SAID DRIVEWAY, CONTRACTOR SHALL REMOVE APPROXIMATELY 9 SY AND 27 SY GRAVEL SURFACING AND CONSTRUCT 18" L.F. CURB. FINISH GRADE DRIVEWAY AREA WITH GOOD TOPSOIL AND SEED AS SPECIFIED.
10. CONTRACTOR TO SEED, FERTILIZE AND MULCH AREAS DISTURBED BY CONSTRUCTION AS PER CITY SPECIFICATIONS. COST TO BE SUBSIDIARY TO PROJECT.
11. ALL EARTHWORK, INCLUDING EXCAVATION, LOOSE FILL, BORROW MATERIAL AND COMPACTED FILL BELOW THE SIX (6) INCH SUBGRADE TREATMENT SHALL BE SUBSIDIARY TO THE PROJECT. COST OF COMPACTED SIX (6) INCH SUBGRADE TREATMENT SHALL BE INCLUDED IN BID ITEM "SQUARE YARD SUBGRADE STABILIZATION MANIPULATION".

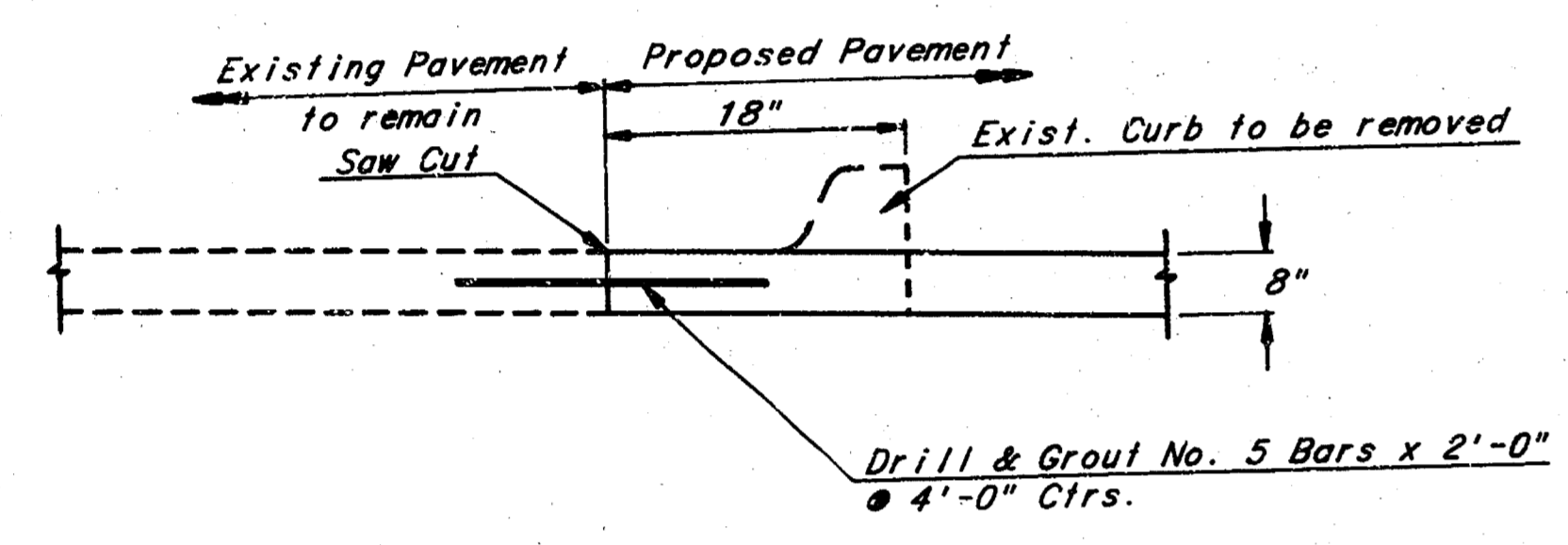
	Revision _____ By _____ Date _____	
	CITY OF WICHITA HARRY STREET IMPROVEMENTS <b>GENERAL PROJECT</b> <b>INFORMATION</b> CITY PROJ. NO. 472-76-245-81327-000-000-001 PROFESSIONAL ENGINEERING CONSULTANTS, P.A. ENGINEERS WICHITA, KANSAS	
Designed by <b>CSB</b>	Job No. <b>03553</b>	2/5 Shl. 2 of 5
Drawn by _____	Date <b>JAN. 1984</b>	

FILMED FROM THE BEST AVAILABLE COPY.....

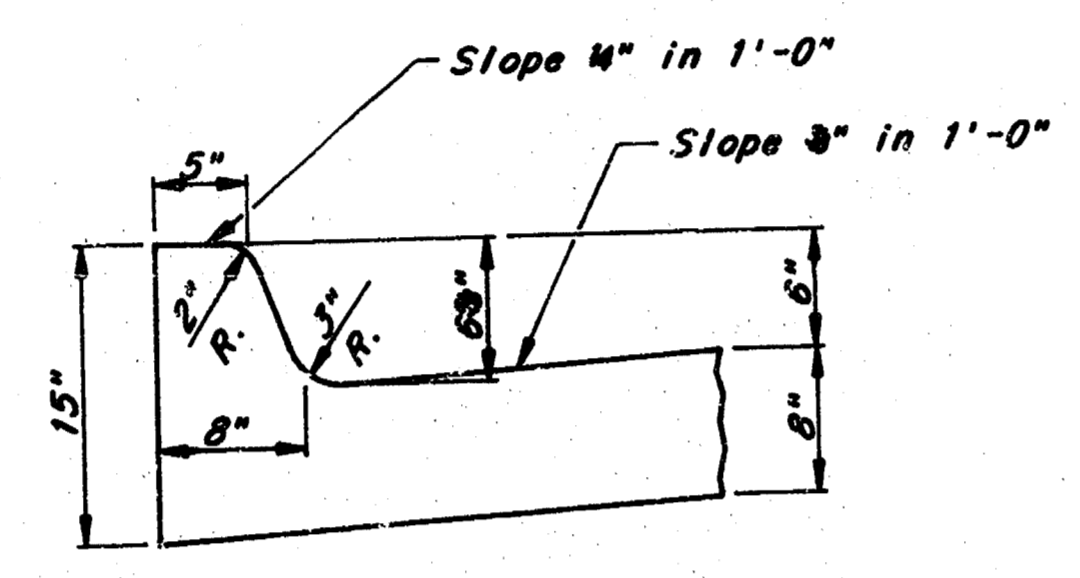


**TYPICAL SECTION**  
Sta. 26+20.12 to Sta. 27+18.42  
Sta. 27+76.42 to Sta. 31+34.05

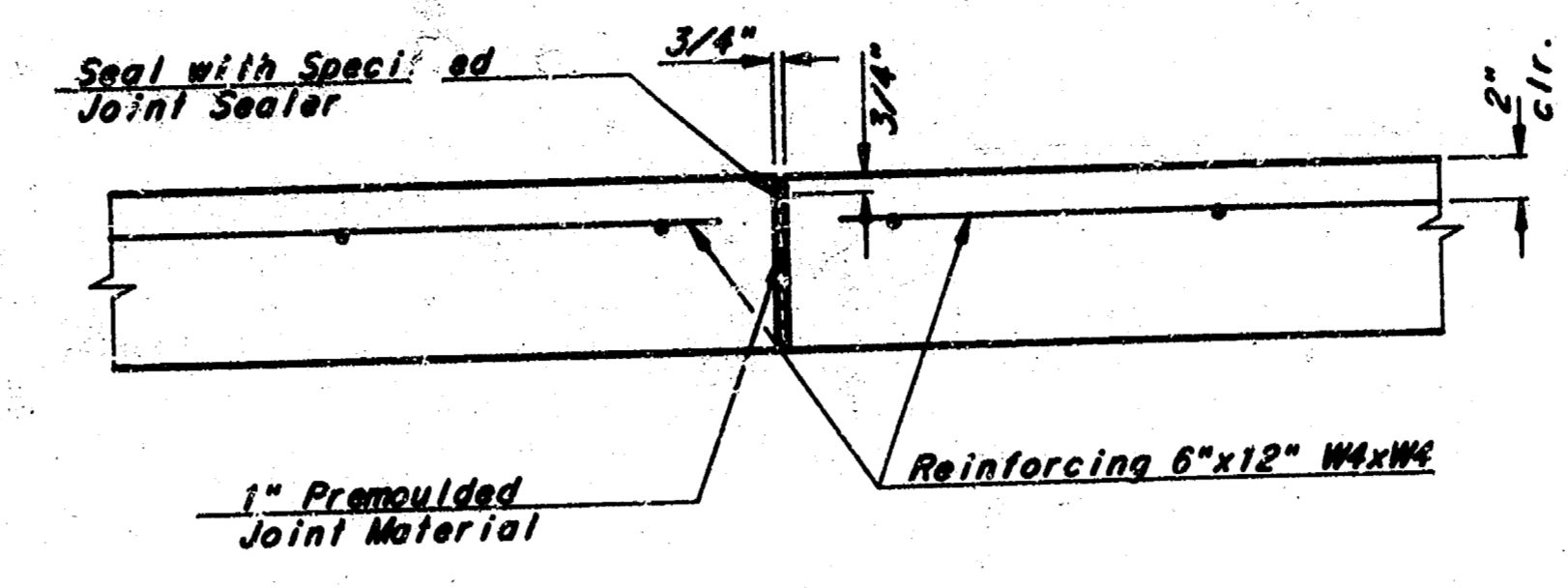
NOTE: Reinforcing shall be Welded Wire Mesh  
Transverse: No. 4 Gauge Wires @ 12" Ctrs.  
Longitudinal: No. 4 Gauge Wires @ 6" Ctrs.



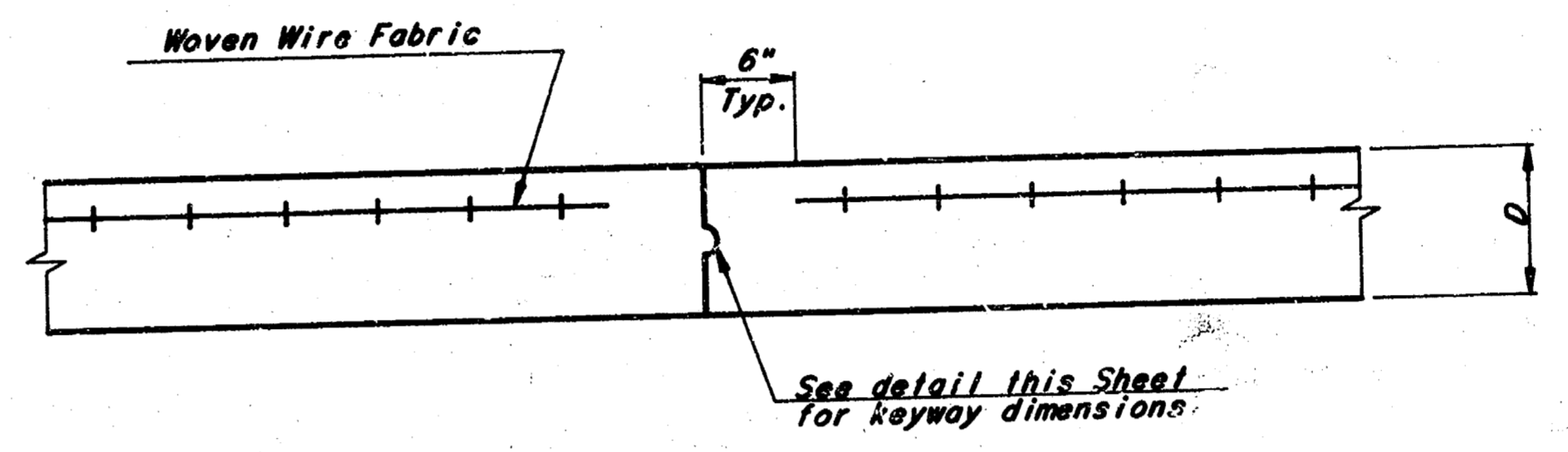
**DOWEL BAR DETAIL**



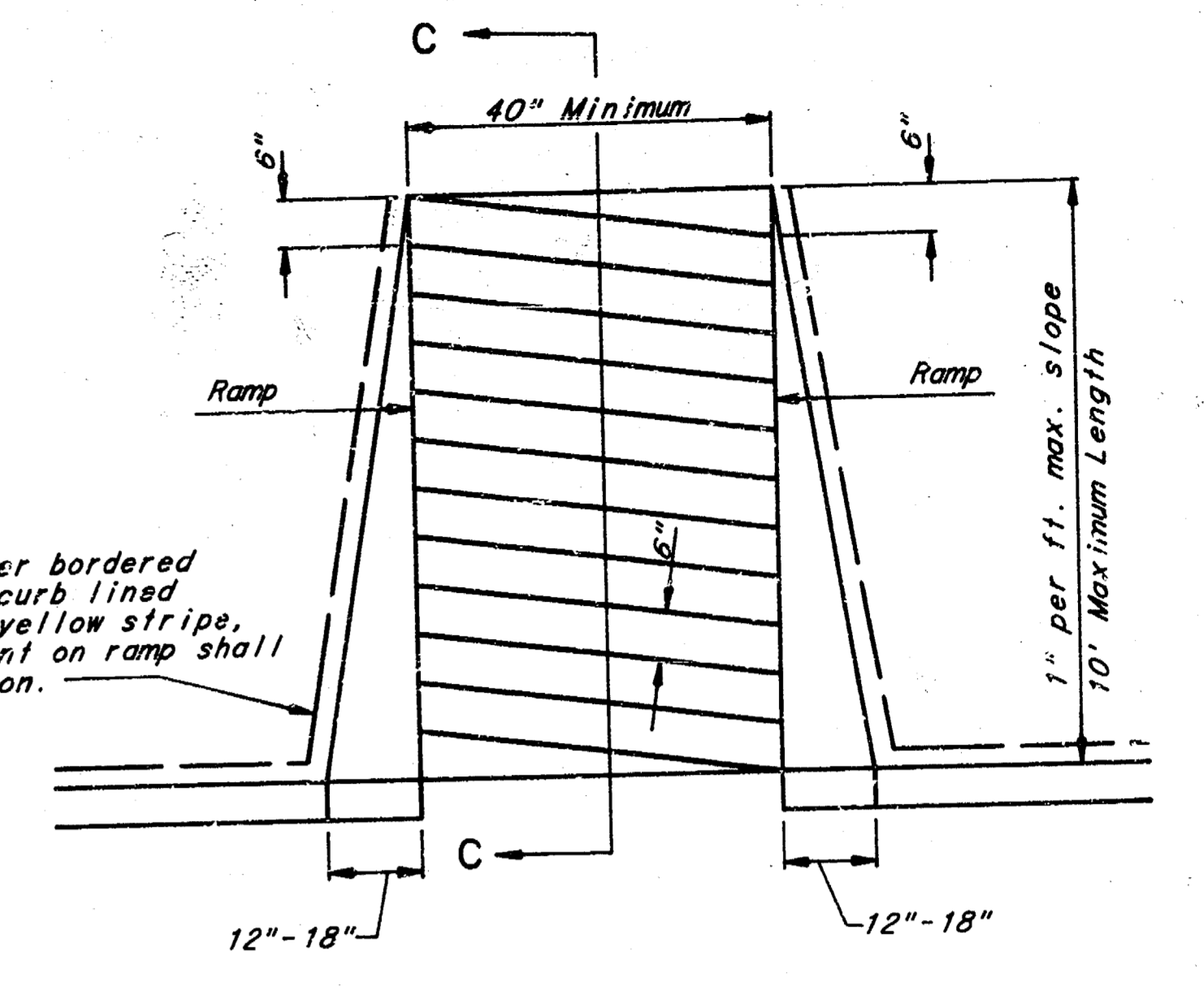
**STANDARD MONOLITHIC CURB**



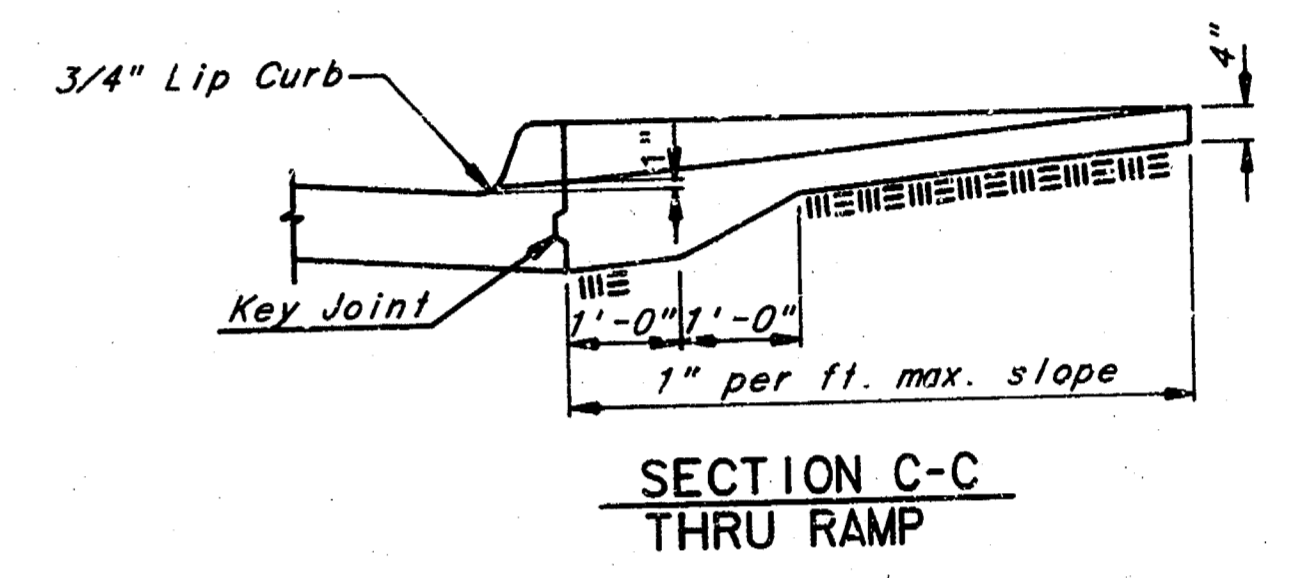
**TYPE B**



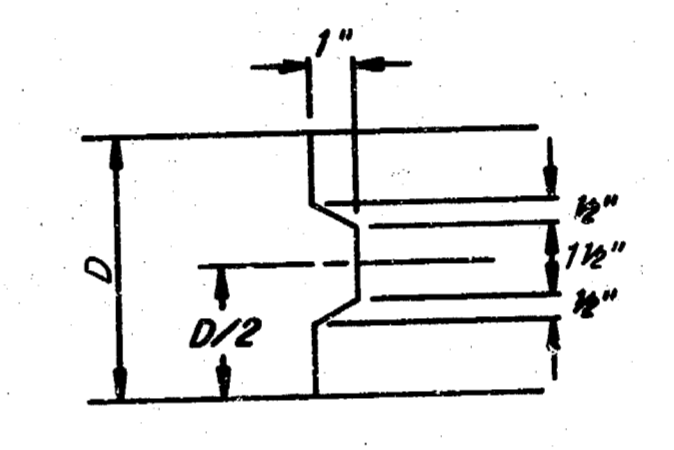
**TYPE E  
KEY JOINT  
CONSTRUCTION JOINT**



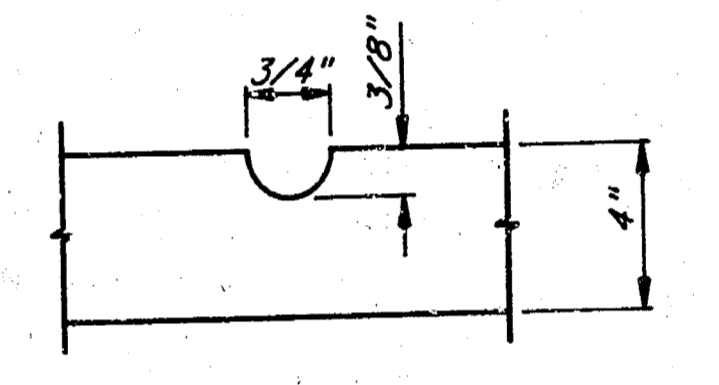
The ramp shall be either bordered on both sides and the curb lined with a four inch wide yellow stripe, or the surface treatment on ramp shall have integral coloration.



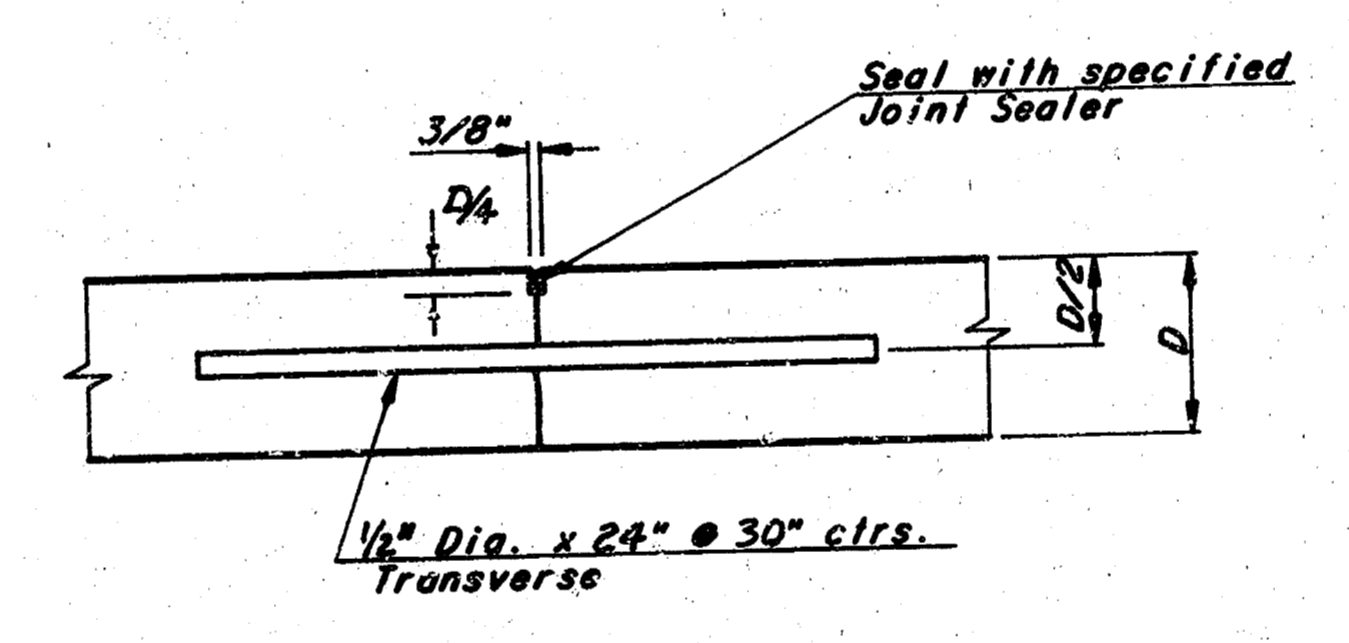
**SECTION C-C  
THRU RAMP**



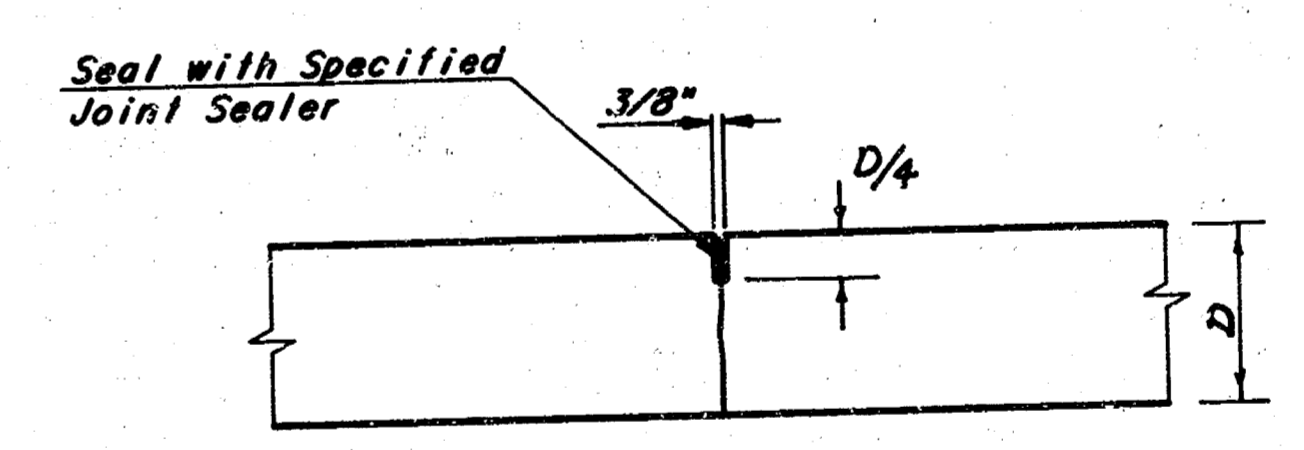
**KEYWAY DETAIL**



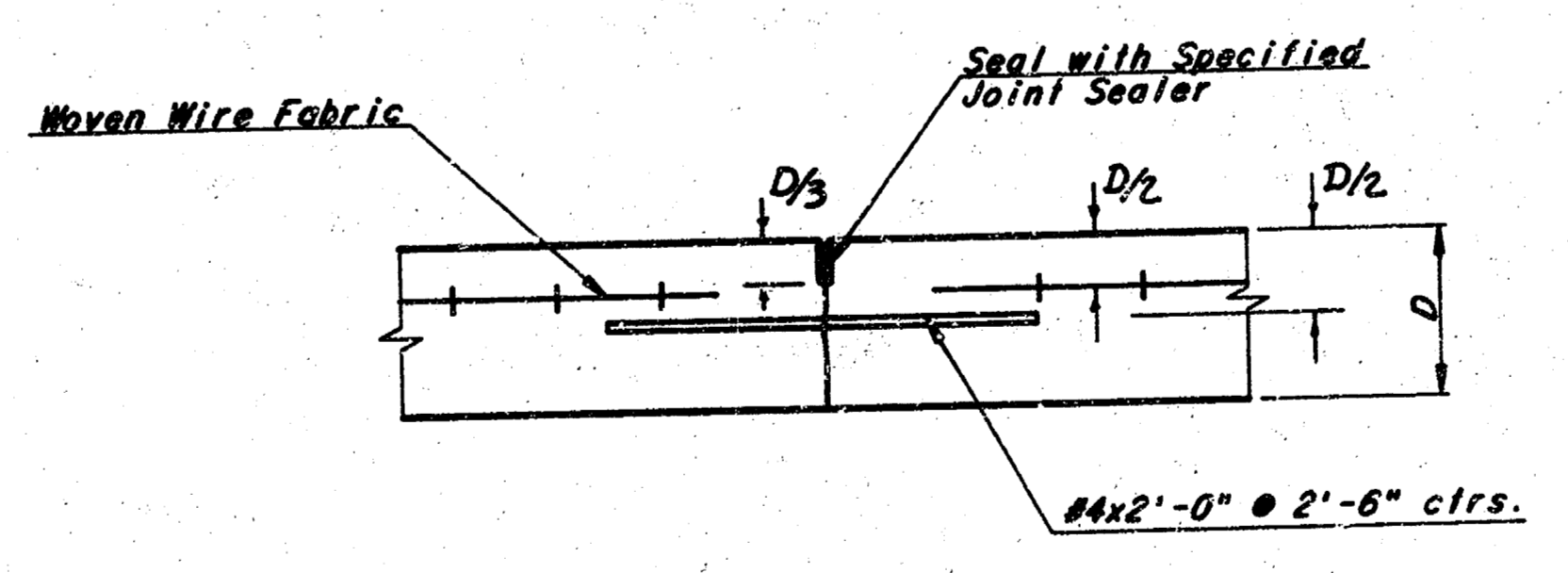
**GROOVE DETAIL**



**TYPE J  
TRANSVERSE CONSTRUCTION JOINT**



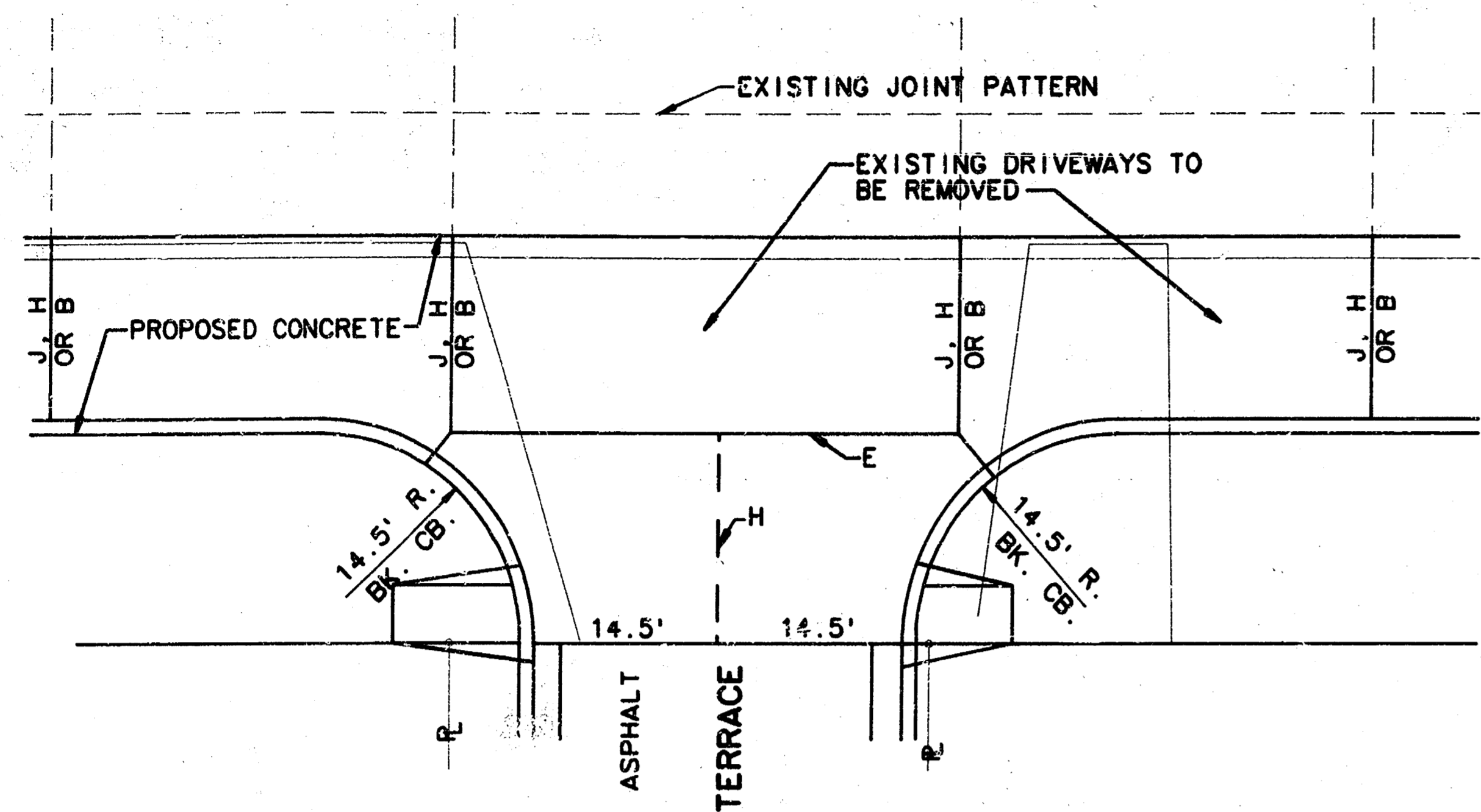
**TYPE H  
TRANSVERSE CONTRACTION JOINT**



**TYPE G  
LONGITUDINAL JOINT**

No.	Revision	By	Date
CITY OF WICHITA, KANSAS HARRY STREET IMPROVEMENTS <b>TYPICAL SECTION          &amp; PAVING DETAILS</b> C.O.W. Proj. No. 472-76-245-81327-000-000-001 <b>PROFESSIONAL ENGINEERING CONSULTANTS, P.A.</b> ENGINEERS WICHITA, KANSAS Designed by CSB Drawn by YODA, CMR, CAP			
3/5 3/5		3 of 5	

FILMED FROM THE BEST AVAILABLE COPY

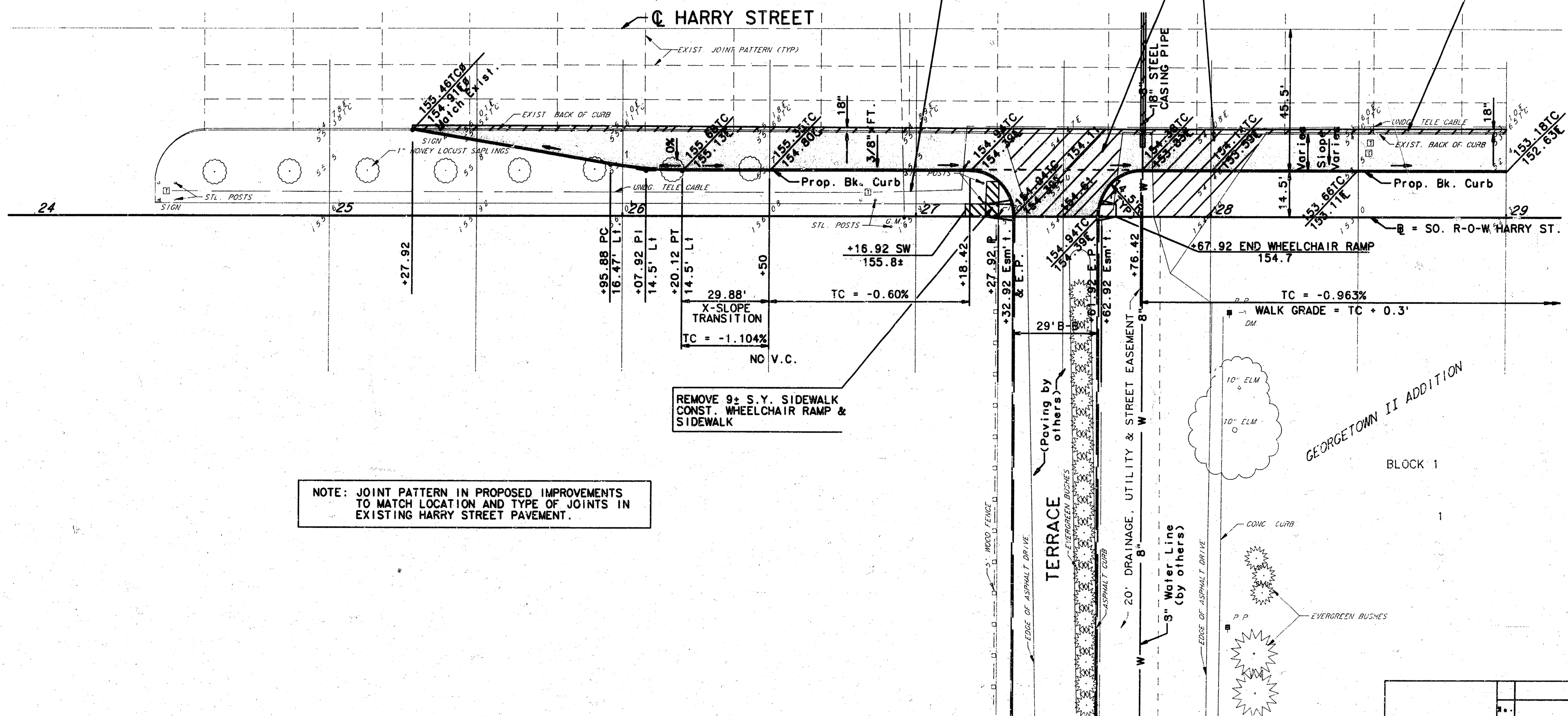


BACK CURB  
CURVE DATA (ARC)  
 $\Delta = 9^{\circ}17'59''$   
 $R = 150.00'$   
 $T = 12.20'$   
 $L = 24.35'$

Scale: 1" = 20'

JOINT PATTERN  
HARRY & TERRACE INTERSECTION

CAUTION!! UNDERGROUND TELEPHONE CABLE

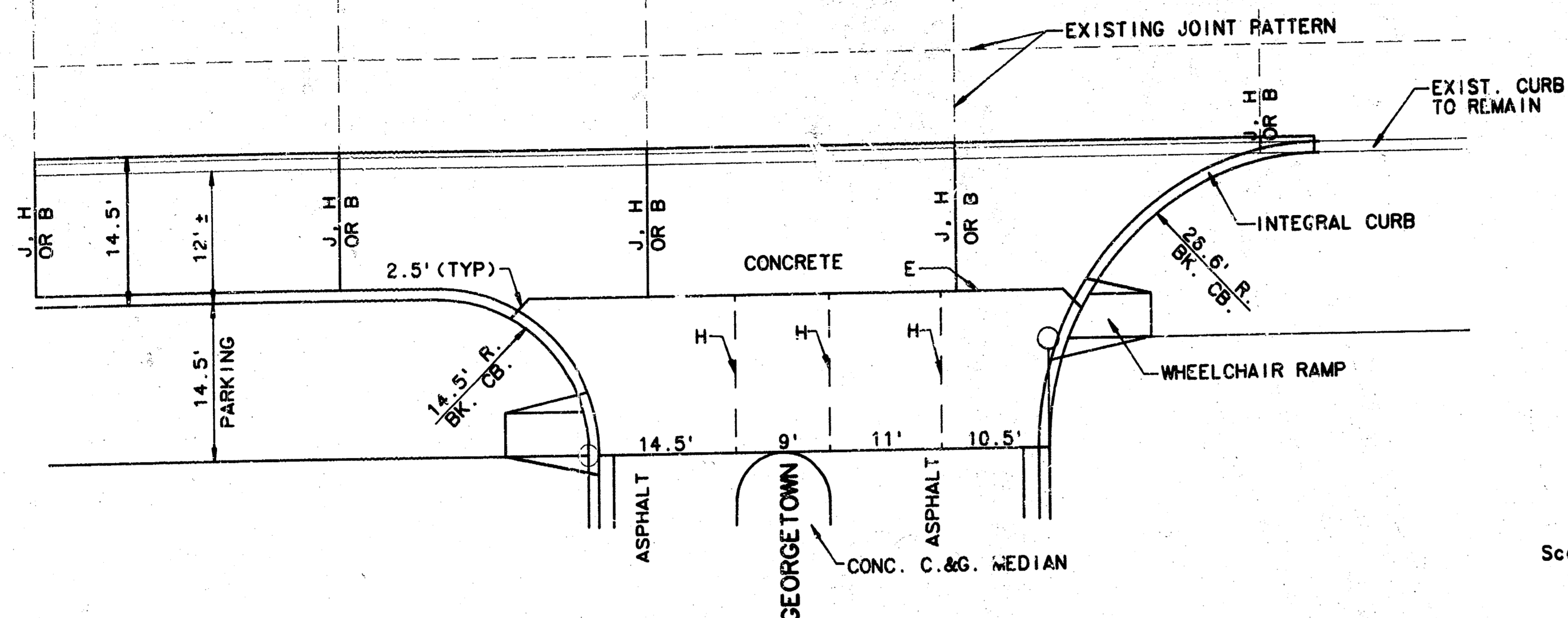


NOTE: JOINT PATTERN IN PROPOSED IMPROVEMENTS TO MATCH LOCATION AND TYPE OF JOINTS IN EXISTING HARRY STREET PAVEMENT.

BM - RAILROAD SPIKE ON EAST SIDE OF POWER POLE, NORTH SIDE OF HARRY STREET, 58.5' EAST OF WEST LINE OF GEORGETOWN II ADDITION. EL. 155.395 CITY DATUM

Revision	By	Date
CITY OF WICHITA, KANSAS HARRY STREET IMPROVEMENTS <b>PAVING PLAN</b> STA. 25+27.92 TO STA. 29+00 C.O.W. Proj. No. 472-76-245-81327-000-000-001		
<b>PROFESSIONAL ENGINEERING CONSULTANTS, P.A.</b> ENGINEERS WICHITA, KANSAS		
Designed by CSB	Job No. 83553	4/5
Drawn by YODA, CWK	Date JAN., 1984	5

FILMED FROM THE BEST AVAILABLE COPY

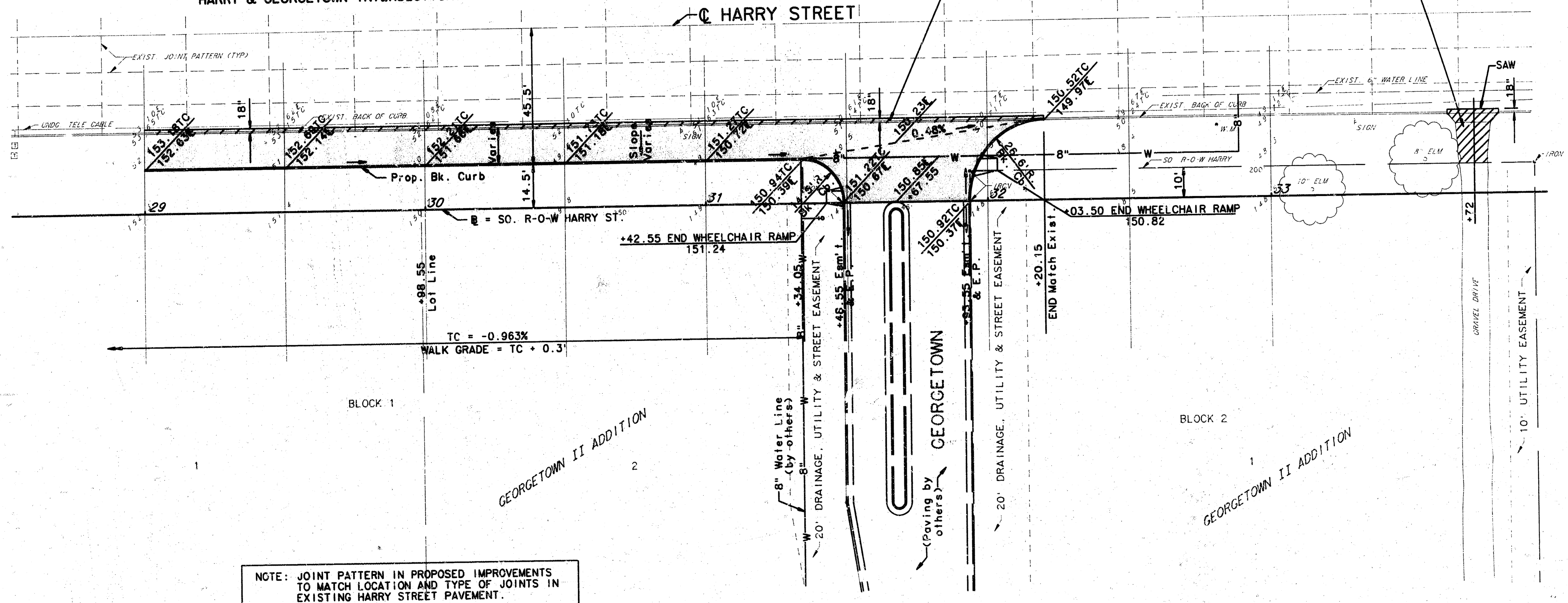


**JOINT PATTERN  
HARRY & GEORGETOWN INTERSECTION**

Scale: 1" = 20'

REMOVE 9 S.Y. CONC. DRIVE,  
3 1/2 S.Y. ROADWAY PAVEMENT,  
& 27 S.Y. GRAVEL DRIVE.  
CONSTRUCT 18 L.F. CURB.  
SEE GENERAL NOTE 9, SHT. 2

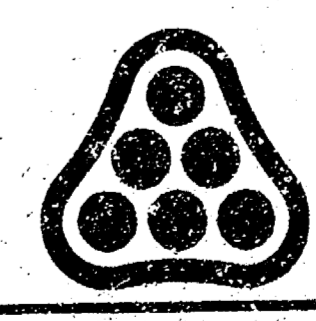
REMOVE 53 1/2 S.Y.  
EXISTING ROADWAY PAVEMENT



NOTE: JOINT PATTERN IN PROPOSED IMPROVEMENTS  
TO MATCH LOCATION AND TYPE OF JOINTS IN  
EXISTING HARRY STREET PAVEMENT.

BM - RAILROAD SPIKE ON EAST SIDE OF POWER POLE, NORTH SIDE  
OF HARRY STREET, 58.5' EAST OF WEST LINE OF GEORGETOWN II  
ADDITION. EL. 155.395 CITY DATUM

Rev.	Revision	By	Date
CITY OF WICHITA, KANSAS HARRY STREET IMPROVEMENTS			
<b>PAVING PLAN</b>			
STA. 29+00 TO STA. 31+20.15			
C.O.W. Proj. No. 472-76-245-81327-000-000-000			
<b>PROFESSIONAL ENGINEERING CONSULTANTS, P.A.</b>			
ENGINEERS WICHITA, KANSAS			
Designed by	CSB	Job No.	83553
Drawn by	YODA, CWK	Date	JAN., 1984
		Sheet	5/5



FILMED FROM THE BEST  
AVAILABLE COPY