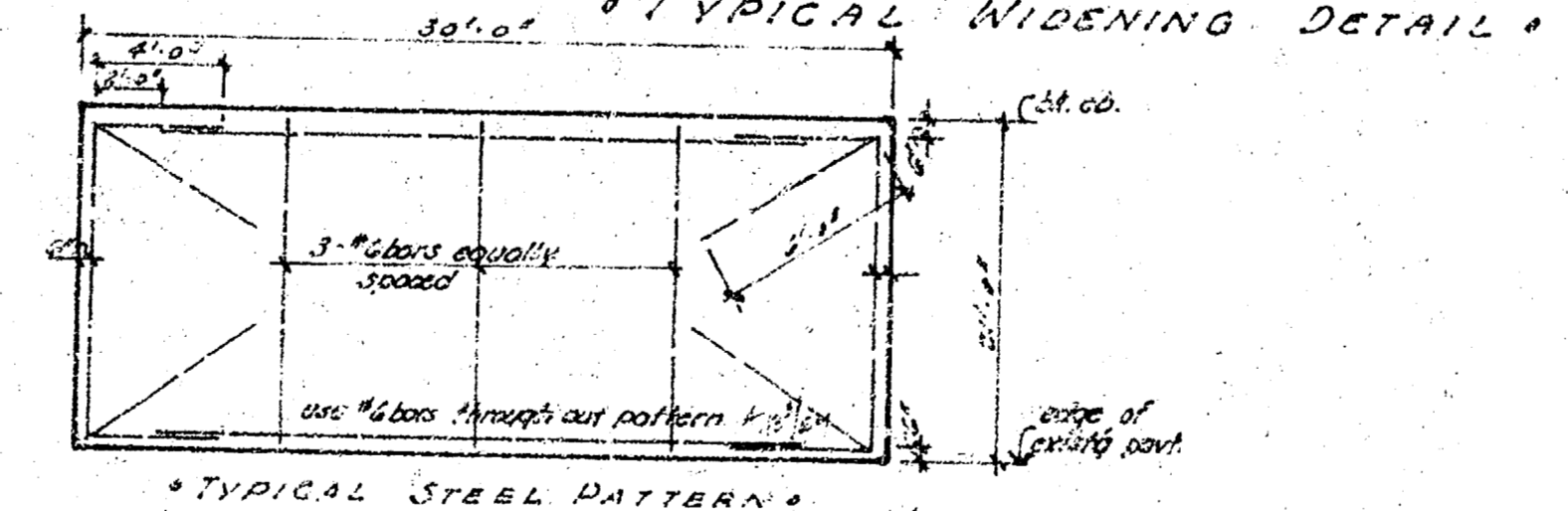
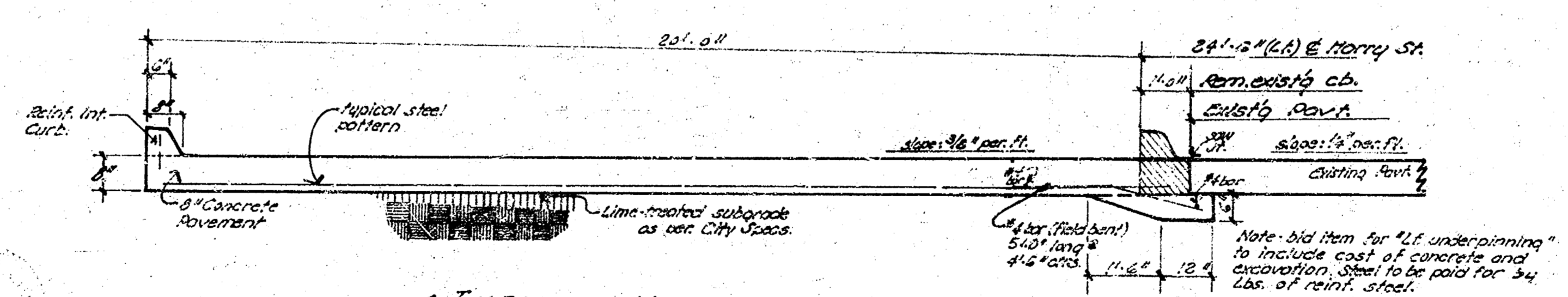
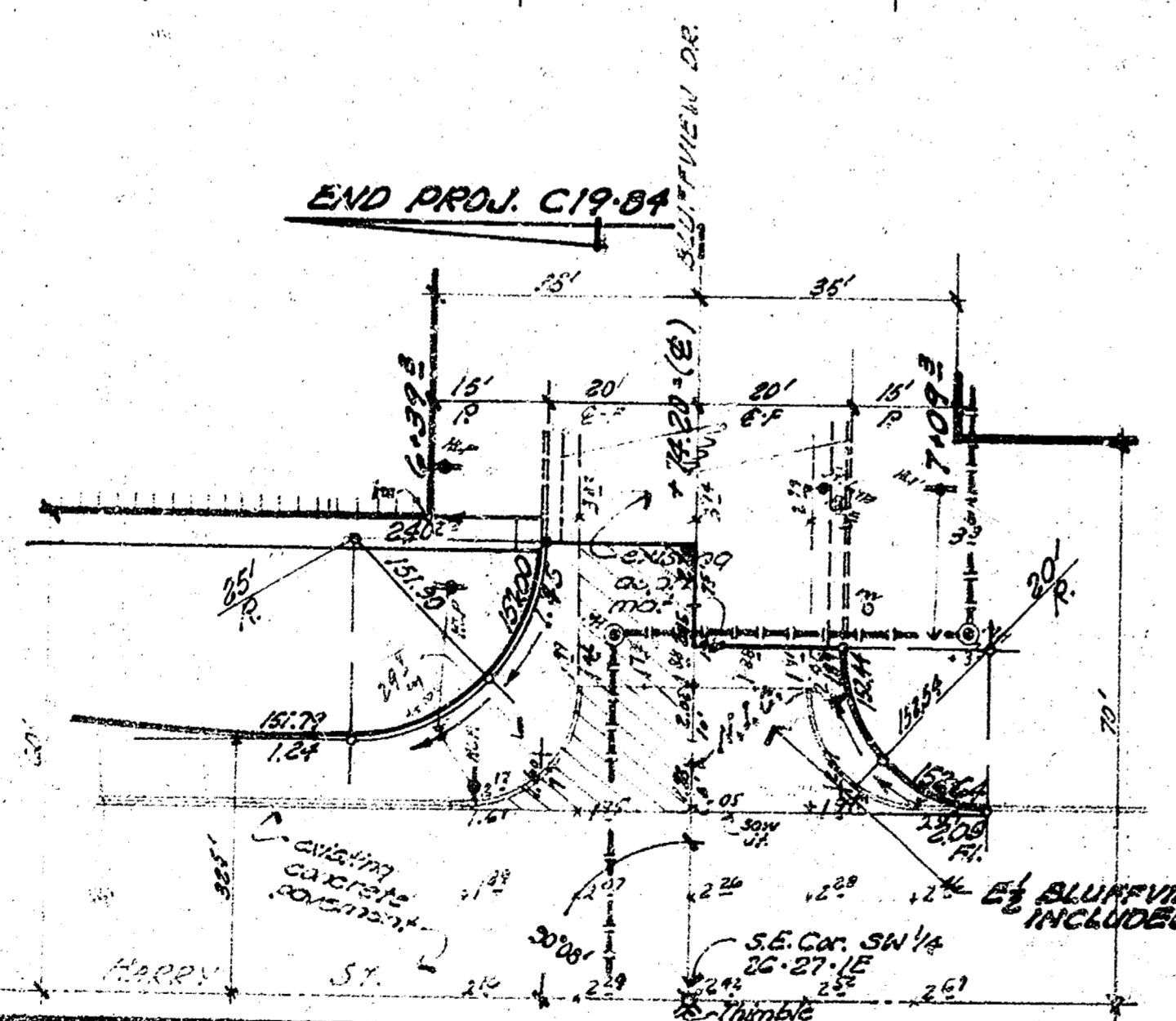


317-157.14' 2nd Fl. Cr. cond. base (Redwood Theatre Sign - So. Side Harry St. approx. 100' N. of N.W. Terrace Dr. No.)

Base Line = North Property Line Harry St.

||||||| Access Control

Set Walk Grades As Shown
MOR-ELL ADDITION



QUANTITIES
28' x 8" concrete widening
1850 cu. ft.
277 cu. yd.



HARRY STREET (N.S.)
@ Bluffview Drive to 230' N. of W. Bluffview Dr.
20'-8" Concrete Widening
City of Wichita, Kansas
B.E. Smith
Date: SEPT. 1970
City Engineer
Proj. No. CIP-84