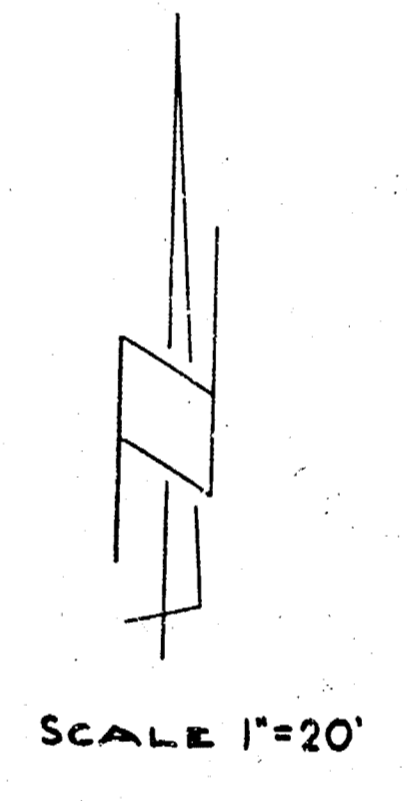
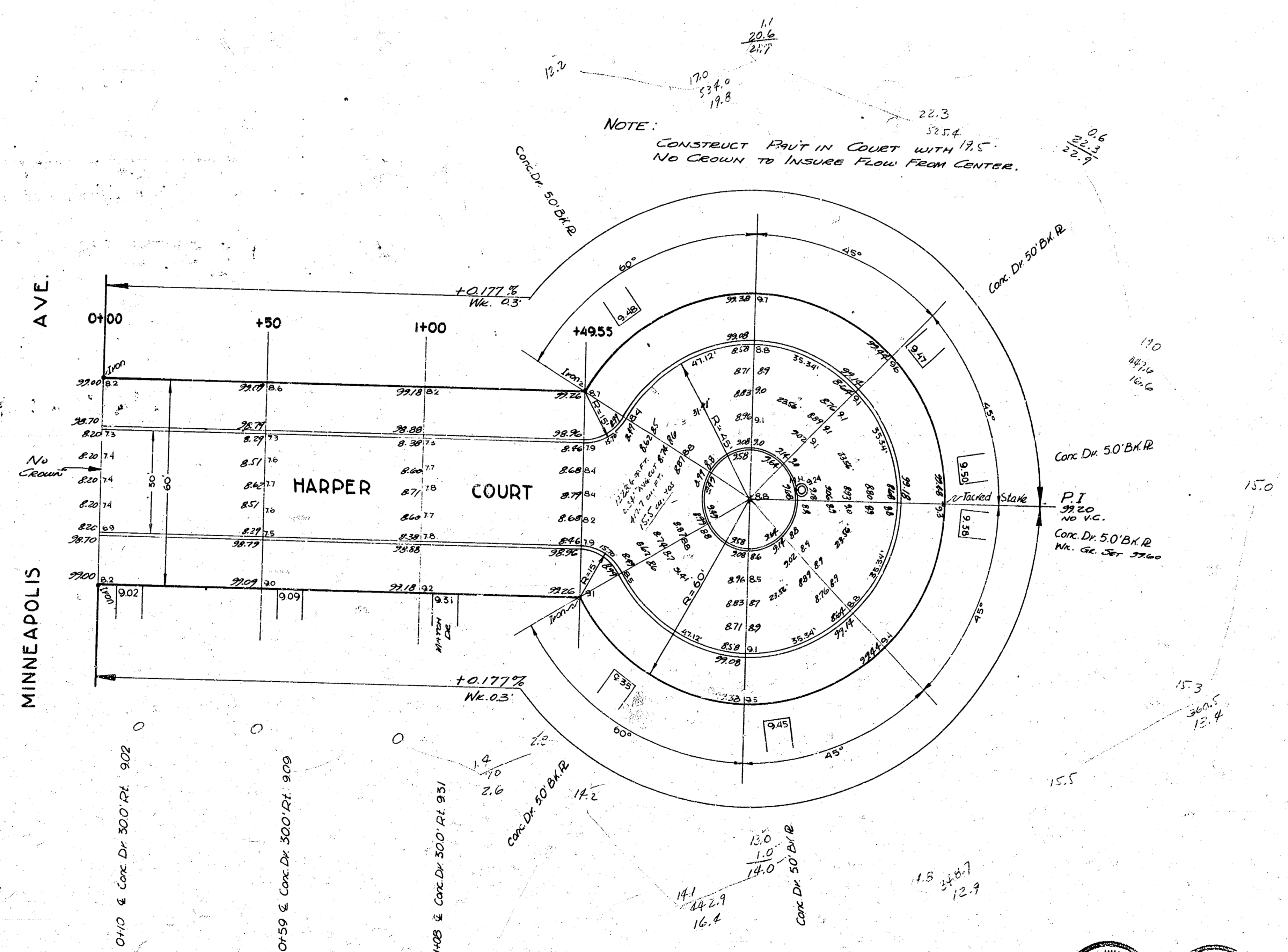


5-2

B.M. 98.32 '3' in 1943 Top cb. E.S. Minneapolis & N.S. Hadson
NOTE: Stationing on & Harper Court

Fig.
Plan
116.7
+10.10
12.5 # cor. 445

NOTE:
CONSTRUCT PAVT IN COURT WITH 1.5%
NO CROWN TO INSURE FLOW FROM CENTER.



HARPER COURT
E.L. MINNEAPOLIS
30' Conc. & Cb.
CITY OF WICHITA, KANSAS
L.K. WHITE CITY ENGINEER
SEPT. 1951 PROJ. NO. C-11-87

