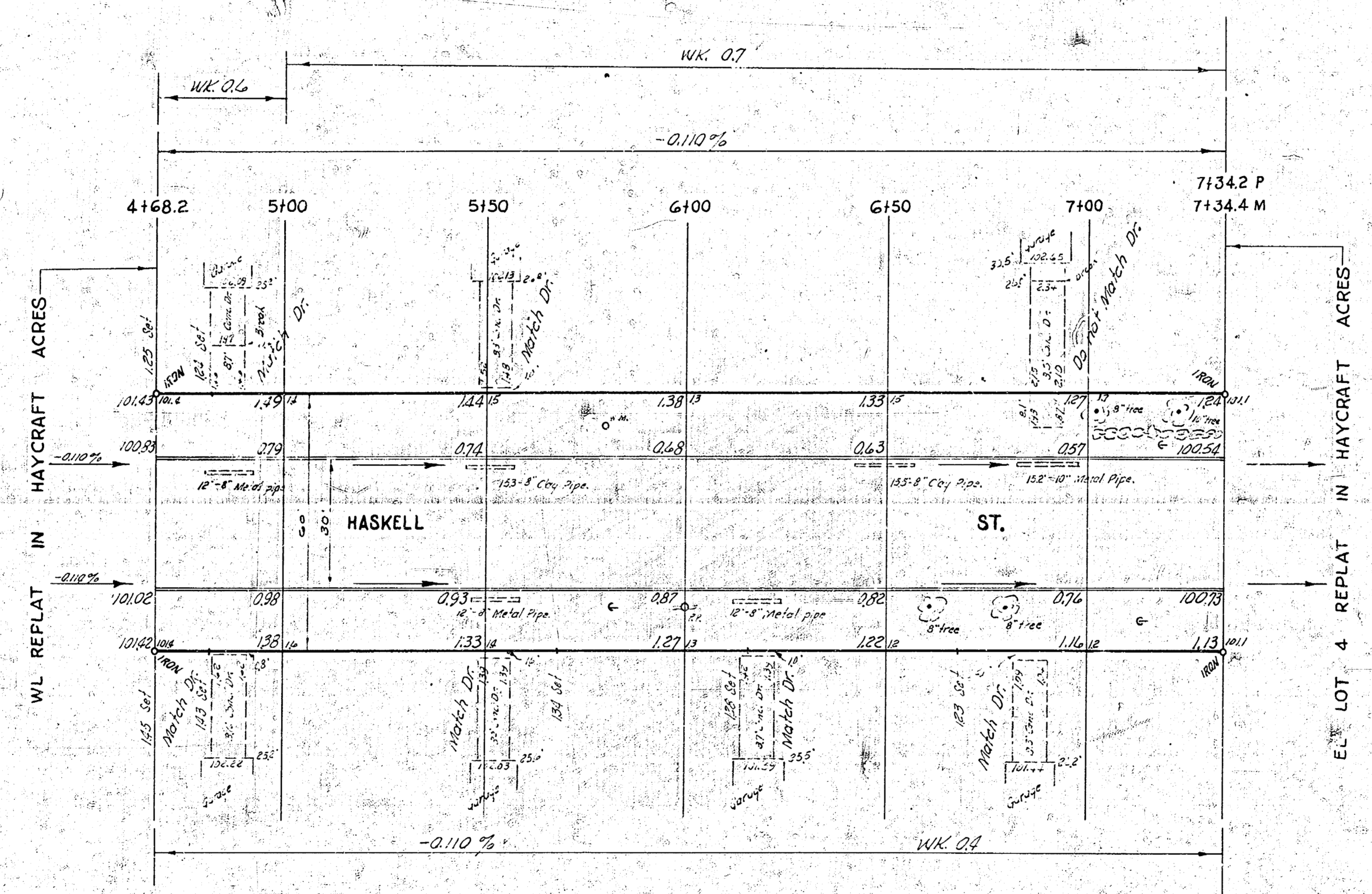


3 M. 101942 City St. at Pownee & Glenn 6' W. of 2' South of Southeast cor.
 B.M. 10155 8" bridge spike on S.E. Side of wood St. light pole at N.W. cor. Haskell & Millwood.



Survey 4710 BK F 27
 Plan 300
 Checked 1/27

NOTE TO FIELD ENGINEER & CONTRACTOR
 All entrance pipes are to be disassembled in accordance with City dirt checker's instructions.

EXCAV. 1132 445.0
 289.5 cu yds
 PROP. 34
 COME 34
 34 cu yds

HASKELL ST.
 WL REPLAT IN HAYCRAFT A. to EL LOT 4 REPLAT IN HAYCRAFT A
 30' Conc. & Cb.
 CITY OF WICHITA, KANSAS
 B. E. SMITH - CITY ENGINEER
 MAY 1957 PROJ. NO. C15-41

