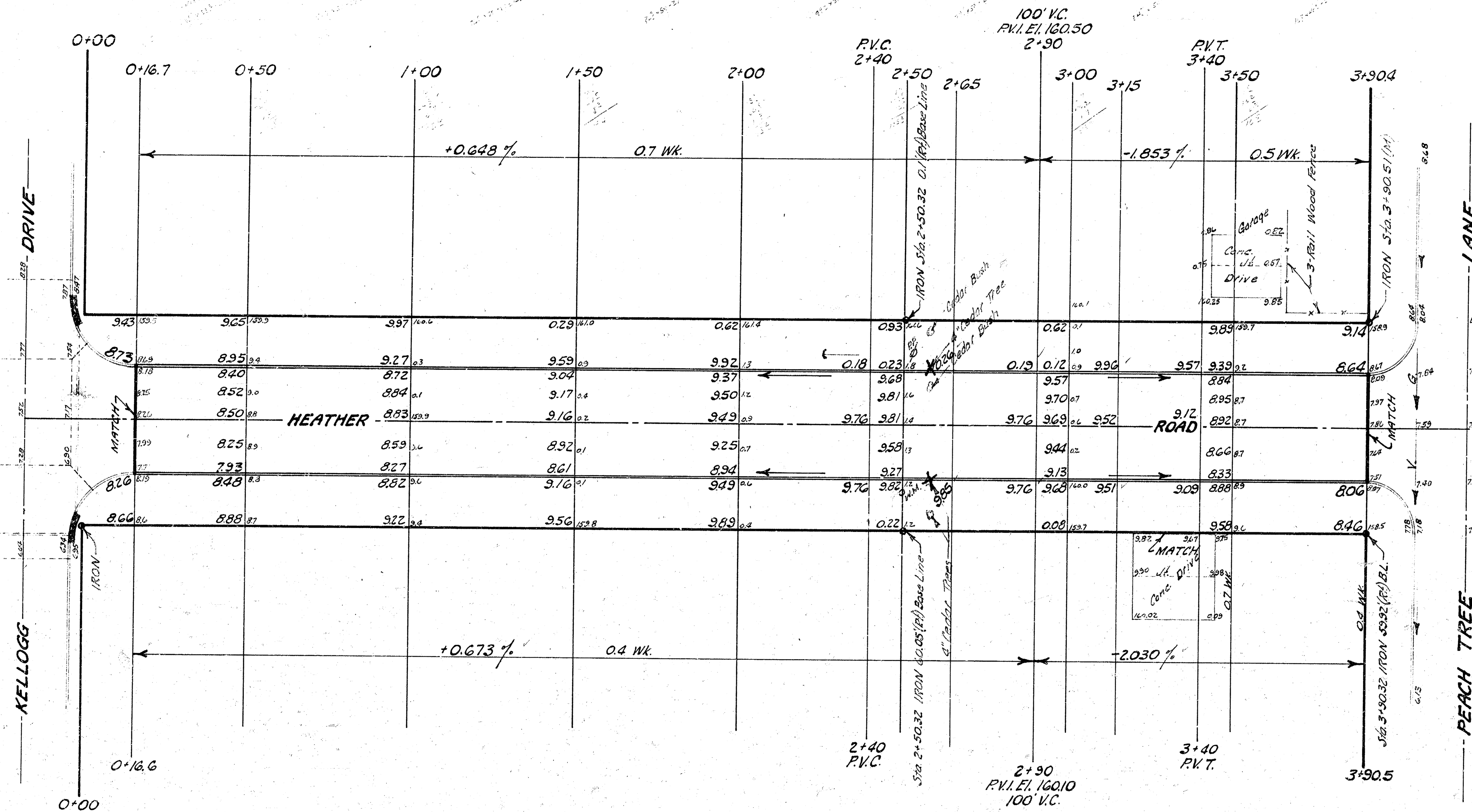


B.M. 158.47 "X" cut top N. curb Kellogg Drive, 5.5' W. of W.L. Heather

Scale: 1"=20'

B.M. 160.47 "W" in Mueller top fire hydrant at N.W. corner Peach Tree Lane & Heather



**EXCAVATION**

	859 Cu.Yds.
+10%	86 "
<b>Total</b>	<b>945 Cu.Yds.</b>

**HEATHER ROAD**  
 FROM N.L. KELLOGG DRIVE  
 to S.L. PEACH TREE LANE  
 30' Conc. & Int. Curb  
 B.E. SMITH CITY ENGINEER  
 CITY OF WICHITA, KANSAS

Date: March 1966 Project No. C15-

