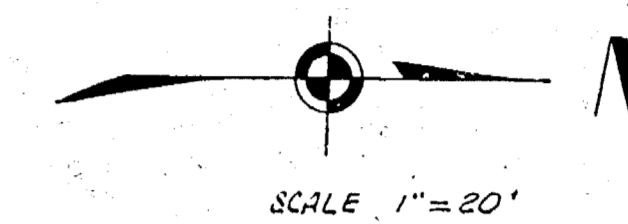
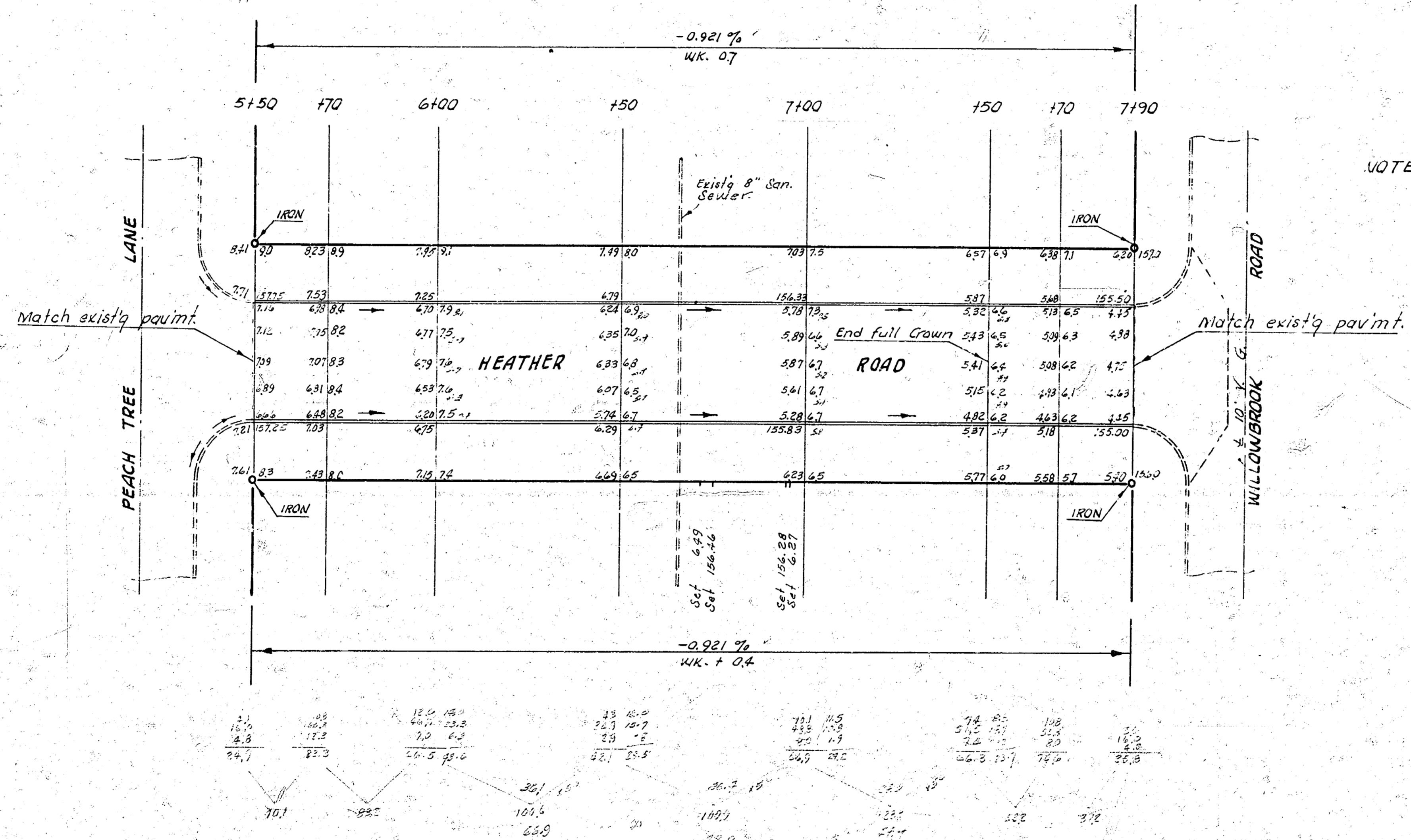


B.M. 103.27 "M" in Mueller top Fire Hyd. on NW cor. Heather & Willowbrook.  
 B.M. 102.47 "M" in Mueller top Fire Hyd. on NW cor. Peach Tree Ln. & Heather Rd.  
 Baseline and stationing on West Pl. Heather Rd.

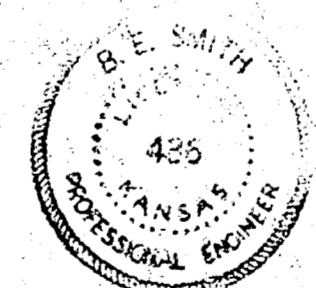
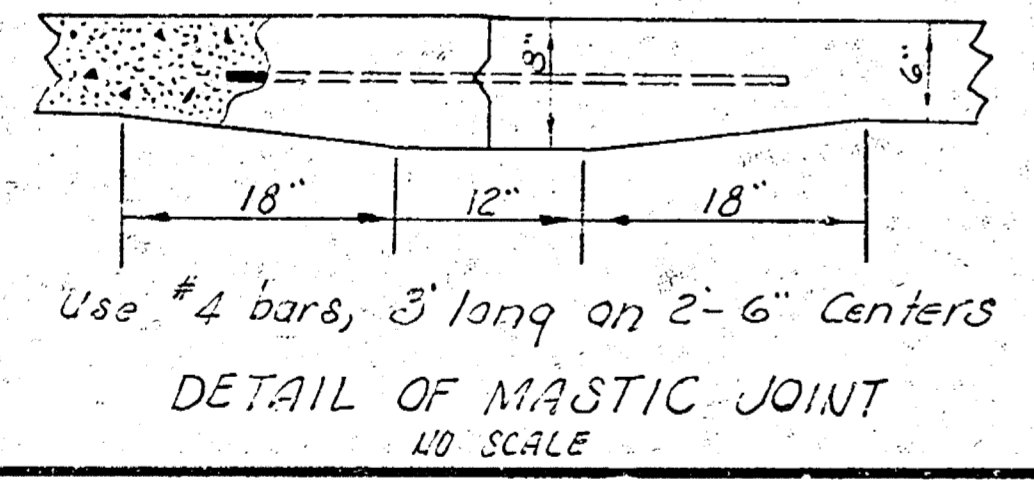


Survey of S. J. B. J. G. 5/29  
 Plan of S. J. B. J. G. 5/29  
 Checked by S. J. B. J. G. 5/29

EARTHWORK  
 EXCAVATION  
 ± 10%  
 597.5  
 59.8  
 597.3 cu. yds.



NOTE: TO CONTRACTOR & FIELD ENG.  
 Re X-Section prior to excavation.



**HEATHER ROAD**  
 NL PEACH TREE LN. TO NL WILLOWBROOK ROAD  
 30' CONC. & CB  
 CITY OF WICHITA, KANSAS  
 B. E. SMITH CITY ENGINEER  
 AUG., 1960 PROJ. NO. C.10-3