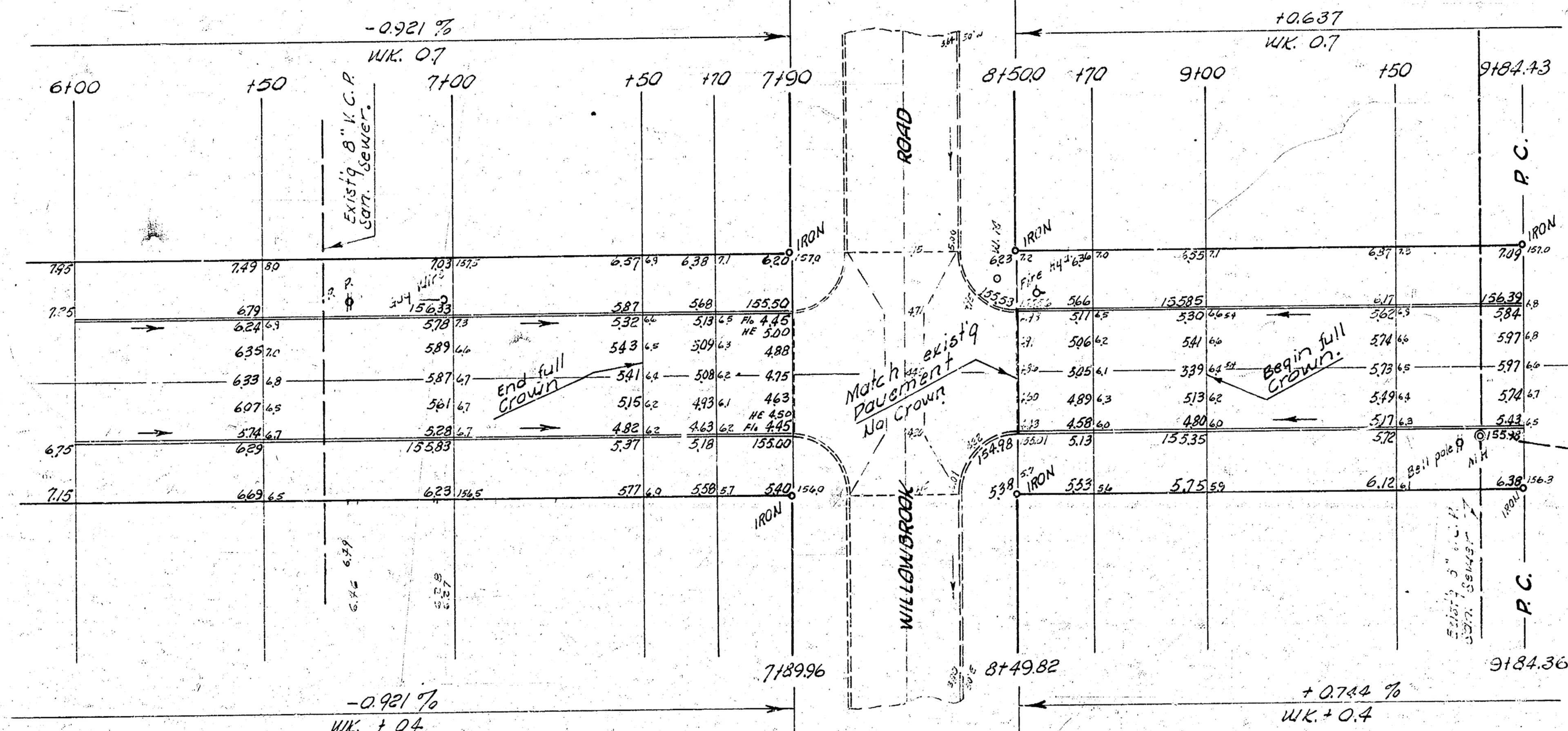
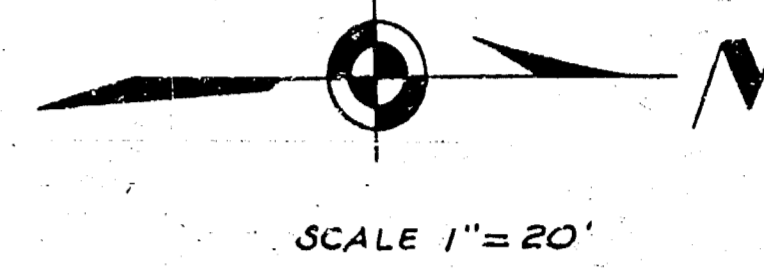


B. M. 158.27 "M" in Meuller top Fire Hyd. on NW cor. Heather & Willowbrook.
 B. M. 160.47 "M" in Meuller top Fire Hyd. on NW cor. Peach Tree Ln. & Heather Rd.
 Base line and stationing on west side Heather Rd.

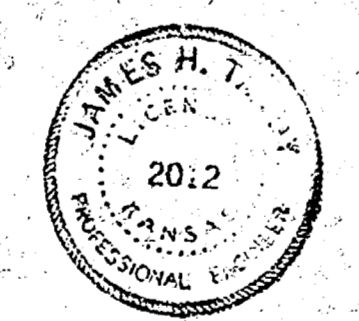
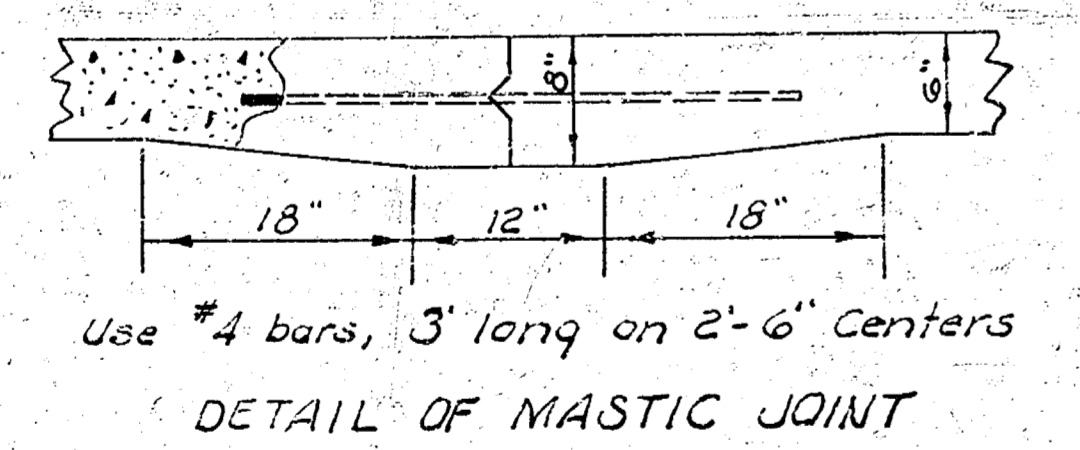
NOTE:
 Begin Proj. No. C13-290
 at Station 81500.



EARTH WORK
EXCAVATION

	CITY	PRD.P.
	105.4	115.2
	13.3	115.7
	119.5 Cu. Yds.	1249.6 Cu. Yds.

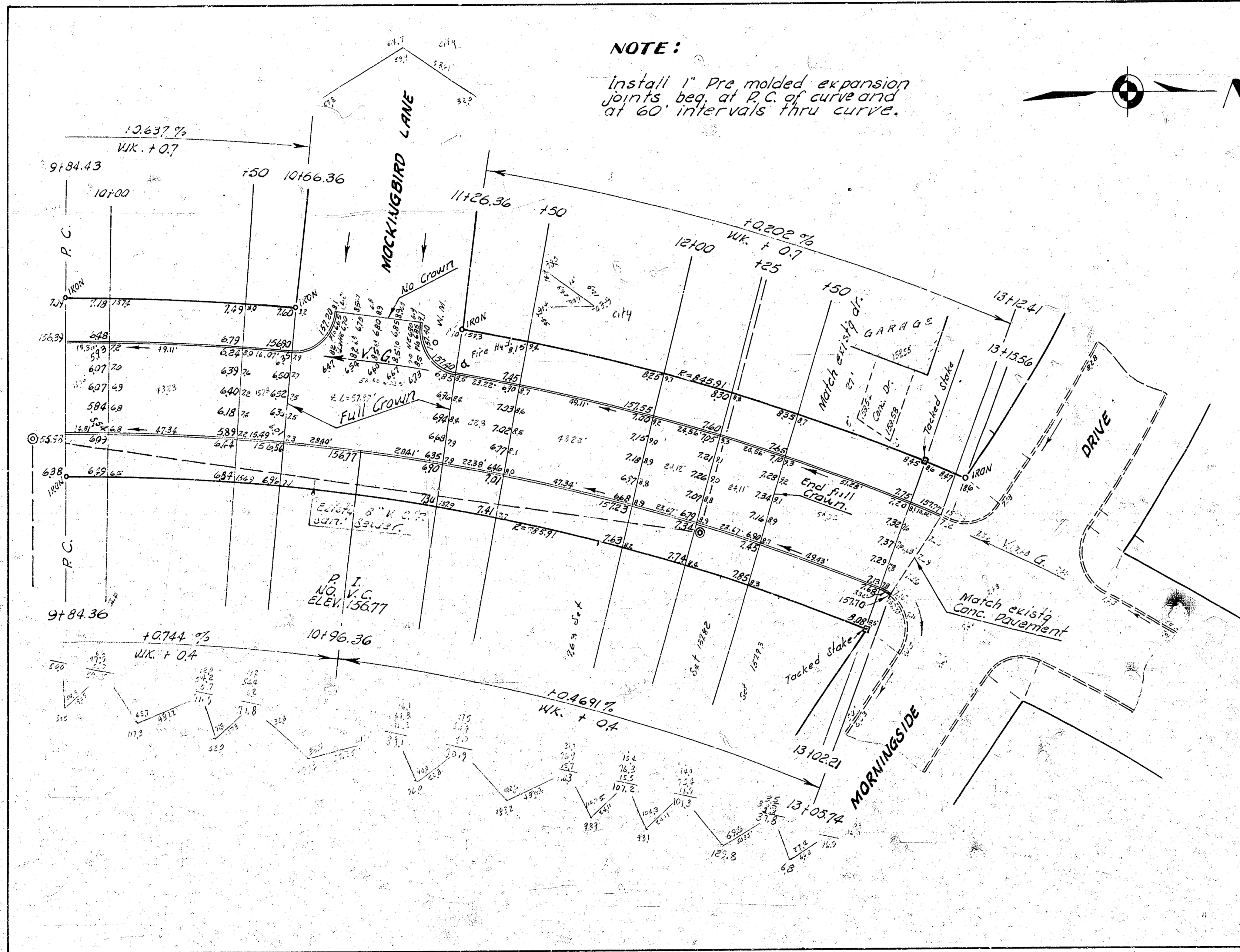
Sum J. R. G. B. E. S. M.
 11/10/59
 11/17/60
 Checked 17



HEATHER ROAD
 NL Willowbrook to SL Morningside
 30' CONC. & CB.
 CITY OF WICHITA, KANSAS
 B. E. SMITH CITY ENGINEER
 DATE: APRIL 1960
 PROJ. NO. C13-290



NOTE:
Install 1" Pre-molded expansion joints beg. at P.C. of curve and at 60' intervals thru curve.



CURVE DATA
Sta. 9+84.43 to Sta. 13+15.36 Stationing on W.R. Heather
R = 845.91 Min. Per running ft. = 2.03120

STATIONS	Arc length West R = 845.91	Chord length 0° offset from face of W.C. L = 838.91	Chord length 90° offset from face of S. cb L = 792.91	Deflection	Total Deflection
9+84.43					
10+00	15.57'	15.45'	14.61'	0° 31' 40"	
+50	50.00'	49.58'	46.86'	1° 41' 36"	2° 13' 16"
10+66.36	16.36'	16.22'	15.33'	0° 33' 15"	2° 46' 31"
11+26.36	60.00'	59.50'	56.23'	2° 01' 53"	4° 48' 26"
+50	27.64'	27.46'	22.17'	0° 48' 02"	5° 36' 28"
12+00	50.00'	49.58'	46.86'	1° 41' 36"	7° 18' 04"
+25	25.00'	24.78'	23.42'	0° 50' 40"	8° 08' 52"
+50	25.00'	24.78'	23.42'	0° 50' 48"	8° 59' 40"
13+02.21	52.21'	52.13'	49.27'	1° 46' 05"	10° 45' 45"
13+05.74	3.53'	3.51'	3.31'	0° 07' 10"	10° 52' 55"
13+12.41	6.67'	6.61'	6.21'	0° 13' 53"	11° 06' 23"
13+15.36	3.15'	3.12'		0° 06' 23"	11° 12' 51"

B.M. 159.83 SW. cor. conc. Patch No. # 8206 Morningside.
B.M. 160.66 " in Mueller Top Fire Hyd. on NW. cor Heather
Road & Mockingbird Lane.

HEATHER ROAD



PROJ. NO. C13-290