

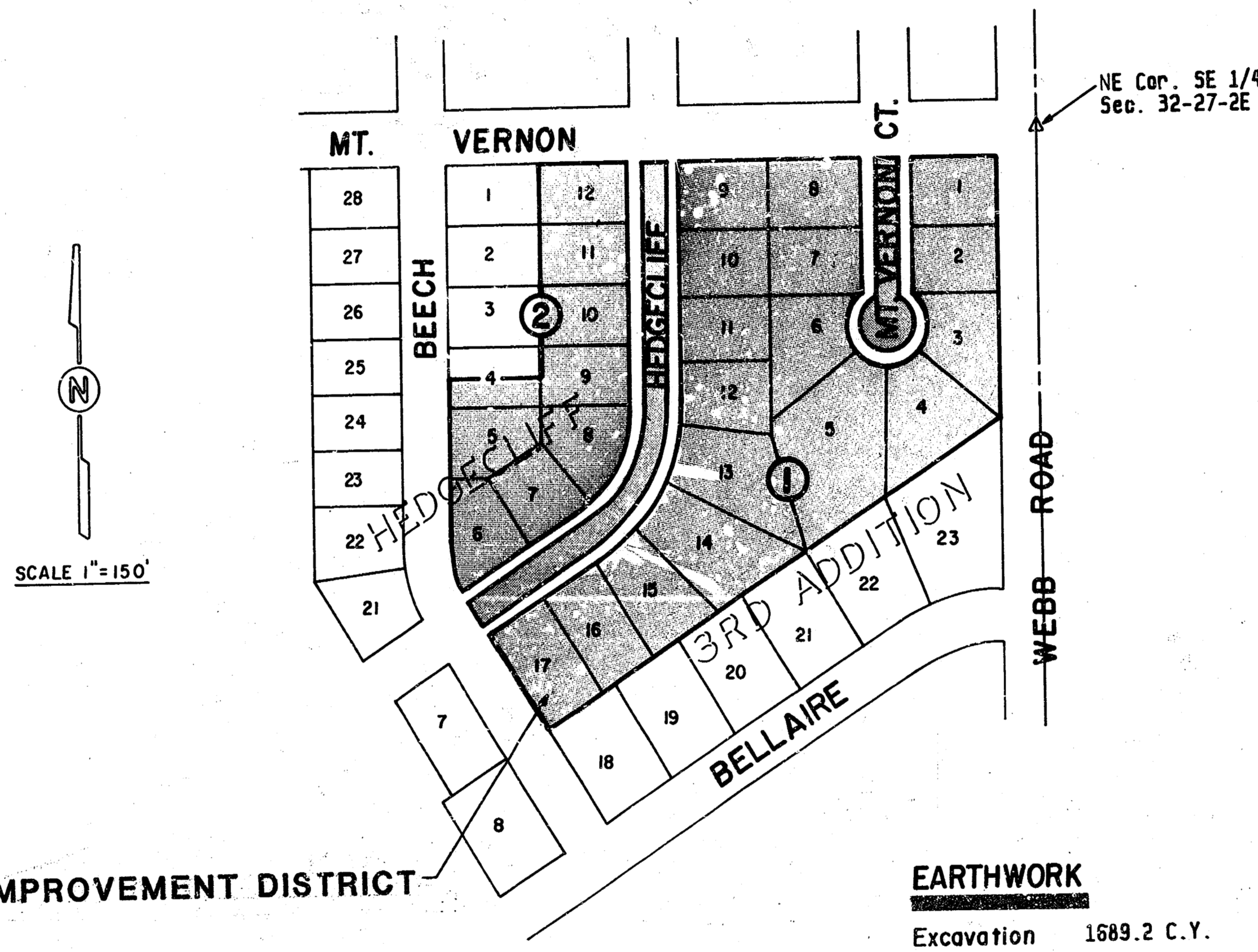
HEDGECLIFF 3RD ADDITION TO THE CITY OF WICHITA, KANSAS

MICHAEL E. LINDEBAK, P.E. - CITY ENGINEER

HEDGECLIFF FROM EASTERLY LINE OF BEECH TO THE S. LINE OF MT. VERNON MT. VERNON COURT FROM THE S. LINE OF MT. VERNON TO AND INCL. CUL-DE-SAC

GENERAL NOTES

1. Utility service lines, poles, valve boxes, meters, and etcetera are to be adjusted as necessary by others prior to construction unless the plans specifically call for their adjustment by the contractor or unless the plans specifically identify a utility to be adjusted by its owner during construction. Existing utilities and their location, as shown on the plans, represent the best information obtainable for design. The contractor will be required to work around existing utilities within the right-of-way which do not conflict with proposed construction.
2. A saw cut of at least one-half the depth of existing surface courses or one-fourth the depth of the existing total pavement thickness shall be provided at locations where proposed construction abuts an existing surface course or pavement for which partial removal of that surface or pavement is required. Sawed joints to facilitate removal within three (3) feet of existing joints will not be permitted and for such instances the limits of removal shall extend to the existing joint. Such saw cuts will not be paid for directly and this cost shall be considered as subsidiary to the removal of the surface or pavement.
3. Limits of earthwork shall match existing ground elevations at the right-of-way line unless otherwise noted on the plans with a new finished grade elevation. When a new finished grade elevation is shown, the earthwork shall extend one foot beyond the right-of-way line and then sloped up or down using permissible slopes to match ground surface.
4. The Contractor shall be responsible for preserving property irons. This Contractor will be required to re-establish any property irons which are damaged or destroyed by his construction operations. Such irons shall be re-established by a licensed land surveyor or a licensed professional engineer in accordance with state laws.
5. Widened gutter section of combined curb and gutter at intersections will not be paid for directly, and this cost shall be considered as subsidiary to the other contract pay items of work.



IMPROVEMENT DISTRICT

EARTHWORK
Excavation 1689.2 C.Y.

STREET IMPROVEMENT PLANS

PROJECT NO. 472-76-245-81853-000-000-001
INDEX #606780

DECEMBER 1988
PLANS PREPARED BY

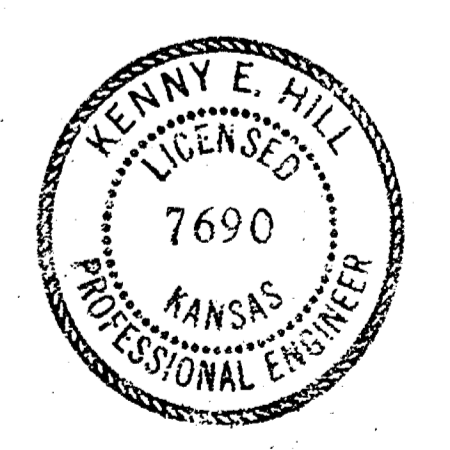
POE & ASSOCIATES OF KANSAS INC.
CONSULTING ENGINEERS
434 N. Oliver, Suite 110 Wichita, KS 67208 316/685-4114

INDEX

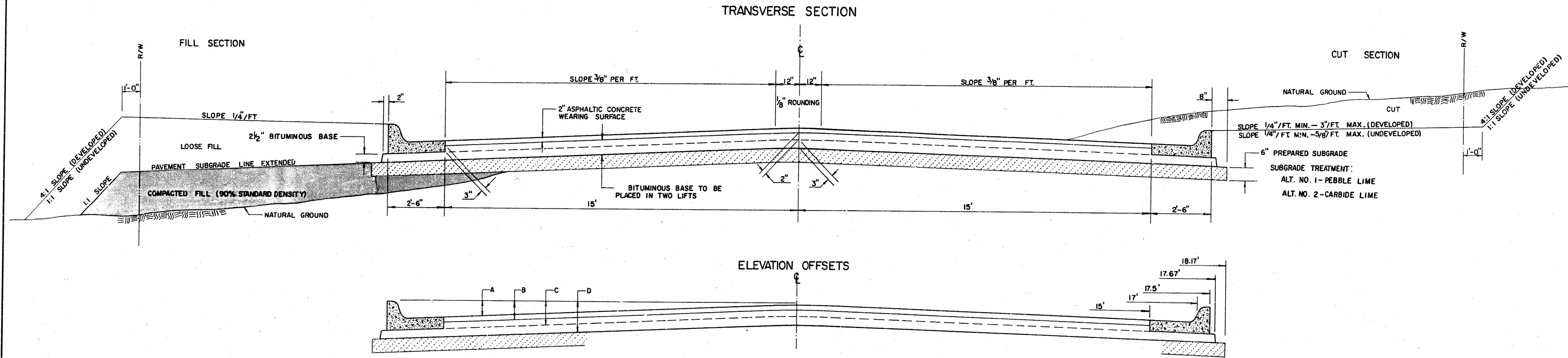
TITLE SHEET	1
TYPICAL 35' PAVEMENT DETAILS	2
HEDGECLIFF	3-4
MT. VERNON COURT	5
CROSS SECTIONS	6-8
HEDGECLIFF 3rd ADDITION PLAT	9

BENCH MARKS

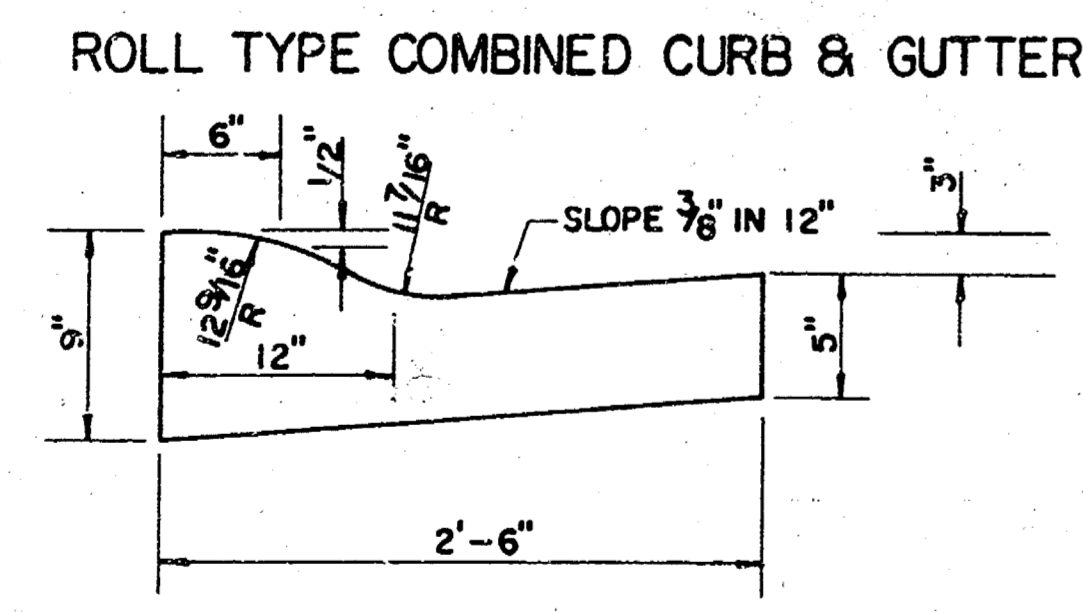
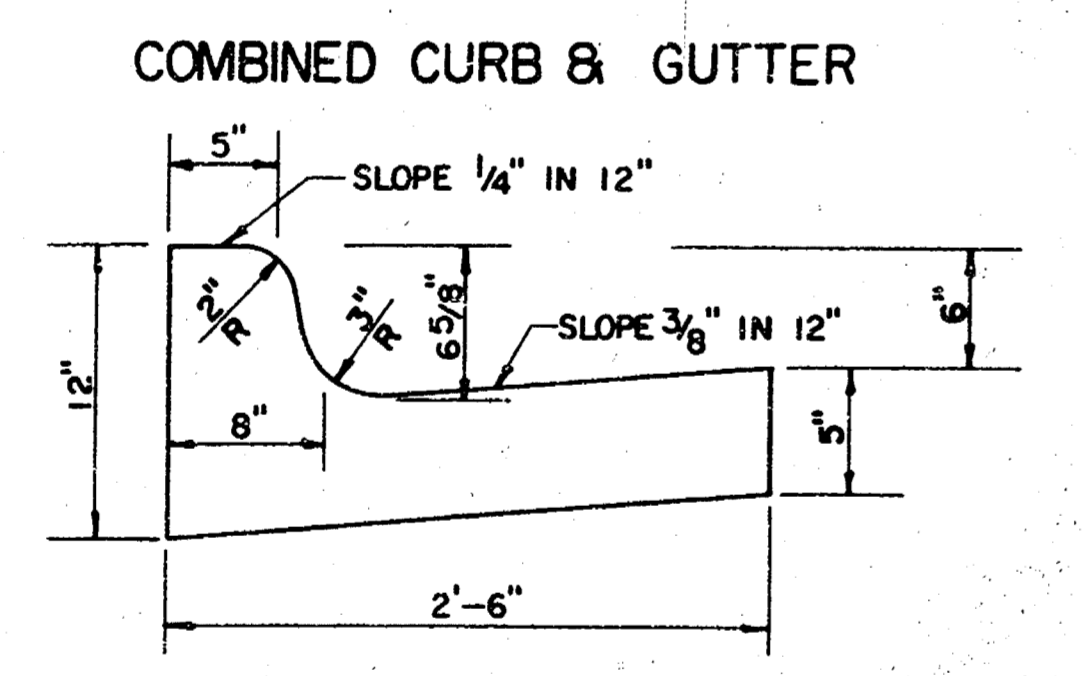
1. City of Wichita Std Disc. 47' W and 44' N. of 1/4 Cor. of Webb Road and Mt. Vernon
Elev. 182.48
2. "cut on top of curb on end of radius on Beech at NW Corner Hedgecliff
Elev. 181.78



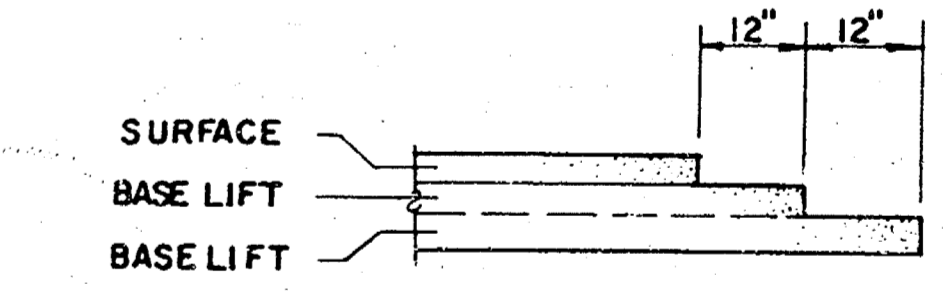
TYPICAL 35' PAVEMENT DETAILS



	DISTANCE FROM CENTERLINE (LT. & RT.)													
	0'	2'	4'	6'	8.5'	10'	12'	14'	15'	17'	17.5'	17.67'	18.17'	
A: TOP OF CURBS TO TOP OF SURFACE LIFT	0.04	0.08	0.14	0.21	0.29	0.33	0.39	0.46	0.49	—	—	—	—	
B: TOP OF CURBS TO TOP OF UPPER BASE LIFT	0.21	0.25	0.31	0.37	0.45	0.50	0.56	0.62	0.65	—	—	—	—	
C: TOP OF CURBS TO TOP OF LOWER BASE LIFT	0.37	0.43	0.50	0.57	0.67	0.72	0.79	0.87	0.90	0.98	1.00	1.00	—	
D: TOP OF CURBS TO TOP OF SUBGRADE	0.62	0.67	0.74	0.81	0.90	0.95	1.02	1.08	1.12	1.19	1.21	1.21	1.23	



TRANSVERSE CONSTRUCTION JOINTS



TRANSVERSE CONSTRUCTION JOINTS SHALL BE CONSTRUCTED IN FLEXIBLE BASE PAVEMENTS AT LOCATIONS WHERE PAVEMENT JOINS EXISTING FLEXIBLE BASE PAVEMENT AS SHOWN BY THE DETAIL. ALL COSTS ASSOCIATED WITH THE CONSTRUCTION OF THE TRANSVERSE JOINT SHALL BE INCLUDED IN THE BID PRICE FOR SQUARE YARDS 7" ASPHALTIC CONCRETE (5" BITUMINOUS BASE).

GENERAL NOTES

- 1) THE ASPHALTIC CONCRETE PAVEMENT BETWEEN THE COMBINED CURB AND GUTTER SHALL BE PAID AS SQUARE YARDS OF 7" ASPHALTIC CONCRETE (5" BITUMINOUS BASE).
- 2) THE BITUMINOUS BASE UNDER AND BEHIND THE COMBINED CURB AND GUTTER SHALL BE PAID AS SQUARE YARDS OF 2 1/2" BITUMINOUS BASE.
- 3) A TACK COAT OF EMULSIFIED ASPHALT (SC-1H OR CSS-1H) SHALL BE APPLIED AT AN APPROXIMATE RATE OF 0.05 GALLONS PER SQUARE YARD BETWEEN EACH LIFT OF ASPHALTIC MATERIAL.
- 4) BITUMINOUS BASE AND ASPHALTIC CONCRETE WEARING SURFACE SHALL BE PLACED WITH A LAYDOWN MACHINE HAVING AUTOMATIC CONTROLS FOR LINE AND GRADE.
- 5) CONSTRUCTION JOINTS IN EACH LIFT SHALL BE STAGGERED A MINIMUM DISTANCE OF ONE (1) FOOT FROM JOINTS IN PRECEDING LIFTS AND PLACED SO THAT A JOINT WILL BE CONSTRUCTED ON THE CENTERLINE OF THE TOP LIFT.
- 6) CONTRACTOR TO BID ONLY ONE SUBGRADE TREATMENT ALTERNATE WHEN ALTERNATES ARE PROVIDED IN THE PROPOSAL AND CONTRACT. THE ALTERNATE CHOSEN BY THE SUCCESSFUL BIDDER SHALL BE USED IN CONSTRUCTING THIS PROJECT.

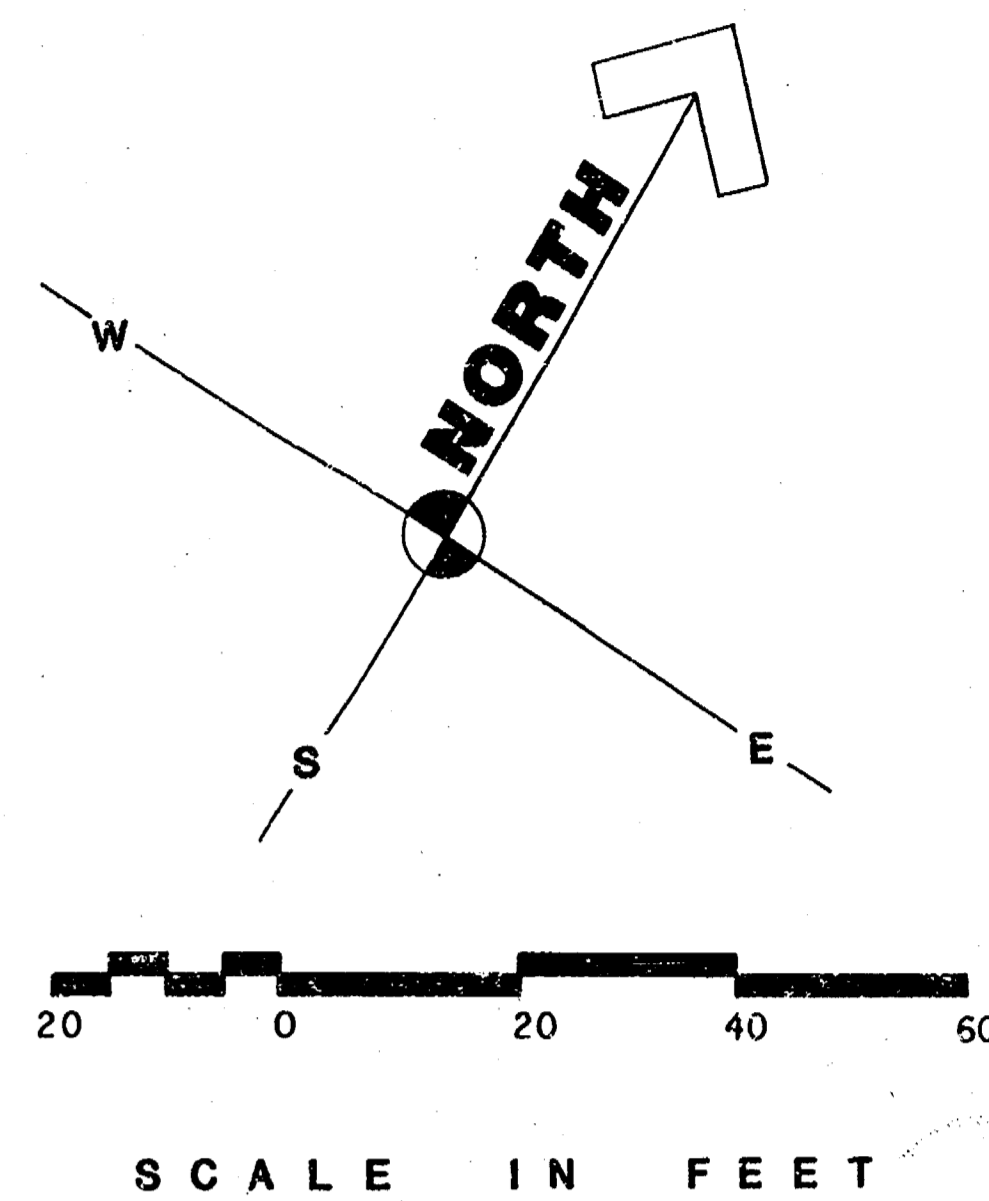
7 INCH RESIDENTIAL ASPHALTIC CONCRETE PAVEMENT WITH 5 INCH BITUMINOUS BASE
 CITY OF WICHITA, KANSAS
 PROJECT NUMBER
 472-76-245-81853-000-000-001

STATE	PROJECT NO.	FISCAL YEAR	SHEET NO.	TOTAL SHEETS
-------	-------------	-------------	-----------	--------------

$\Delta=57^{\circ}47'22''$ L=190.26' R=188.64' T=104.11'

STA.	C ARC	CHORD LENGTH		DEFLECTION	TOTAL DEFLECTION
		8' OFF LT. CB.	8' OFF RT. CB.		
2+12 P.C.					
2+25	13	11.27	13.00	1°58'27"	1°58'27"
2+50	25	21.67	24.98	3°47'48"	5°46'15"
2+75	25	21.67	24.98	3°47'48"	9°34'03"
3+00	25	21.67	24.98	3°47'48"	13°21'51"
3+25	25	21.67	24.98	3°47'48"	17°09'39"
3+50	25	21.67	24.98	3°47'48"	20°57'27"
3+75	25	21.67	24.98	3°47'48"	24°45'15"
4+02.26 P.T.	27.26	23.63	27.24	4°08'26"	28°53'41"

DEFL./FT. = 0.15186667 (DEG.) *9.112000002 (MIN.)



PLAN

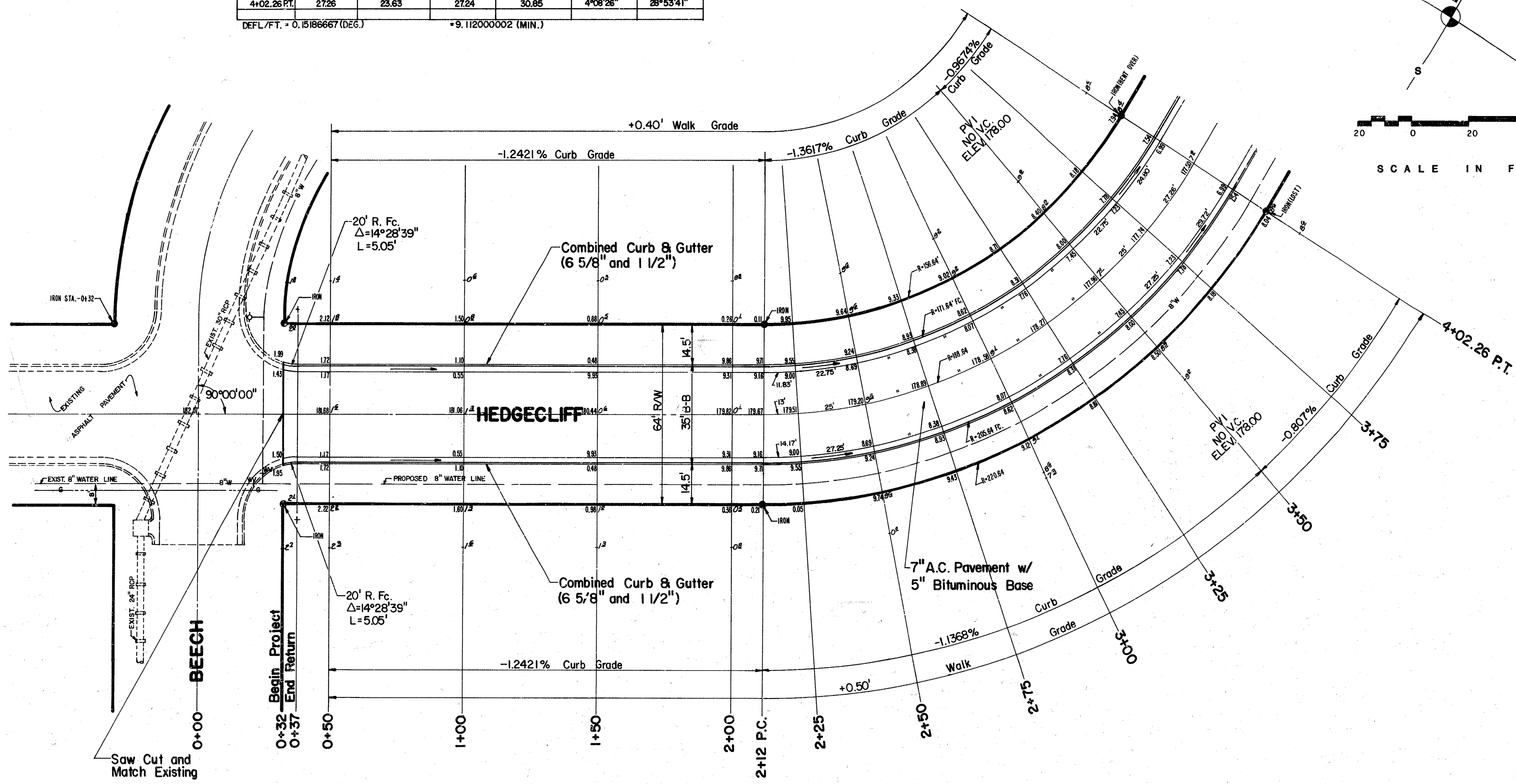
DATE	BY	CHECKED

REVISIONS:
 1. ALIGNED CHECKED
 2. FULL SCALE
 3. DATE

PROFILE

DATE	BY	CHECKED

REVISIONS:
 1. STRUCTURE NOTATION CHANGED
 2. DATE



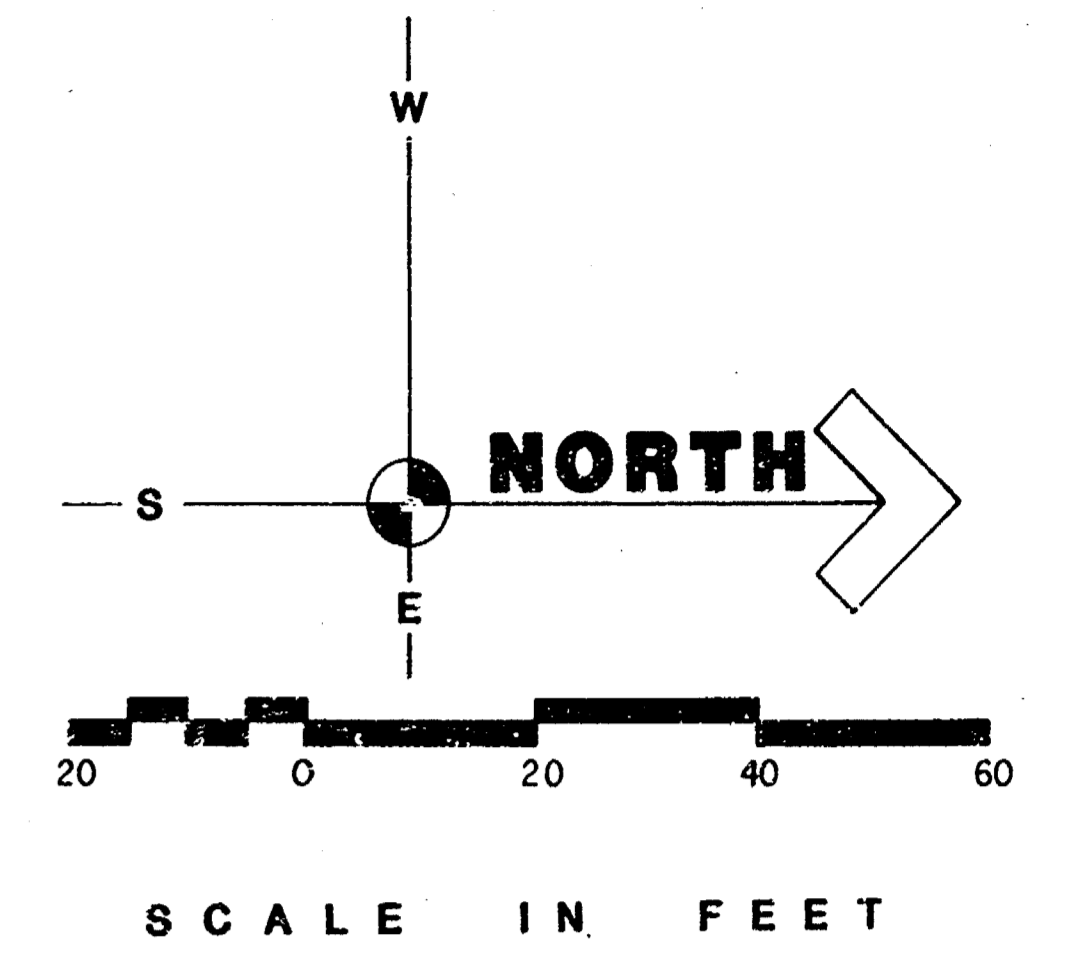
POE & ASSOCIATES OF KANSAS INC.
 CONSULTING ENGINEERS
 434 N. Oliver, Suite 110 • Wichita, KS 67208 • 316-685-4114

ENGINEER: K.H.
 ENG. TECH:
 DRAWN BY: T.E.B.
 DATE: DEC. 1988
 SHEET: 3 OF 9

Hedgecliff
 CITY OF WICHITA, KANSAS
 PROJECT NO. 472-76-245-81853-000-000-001

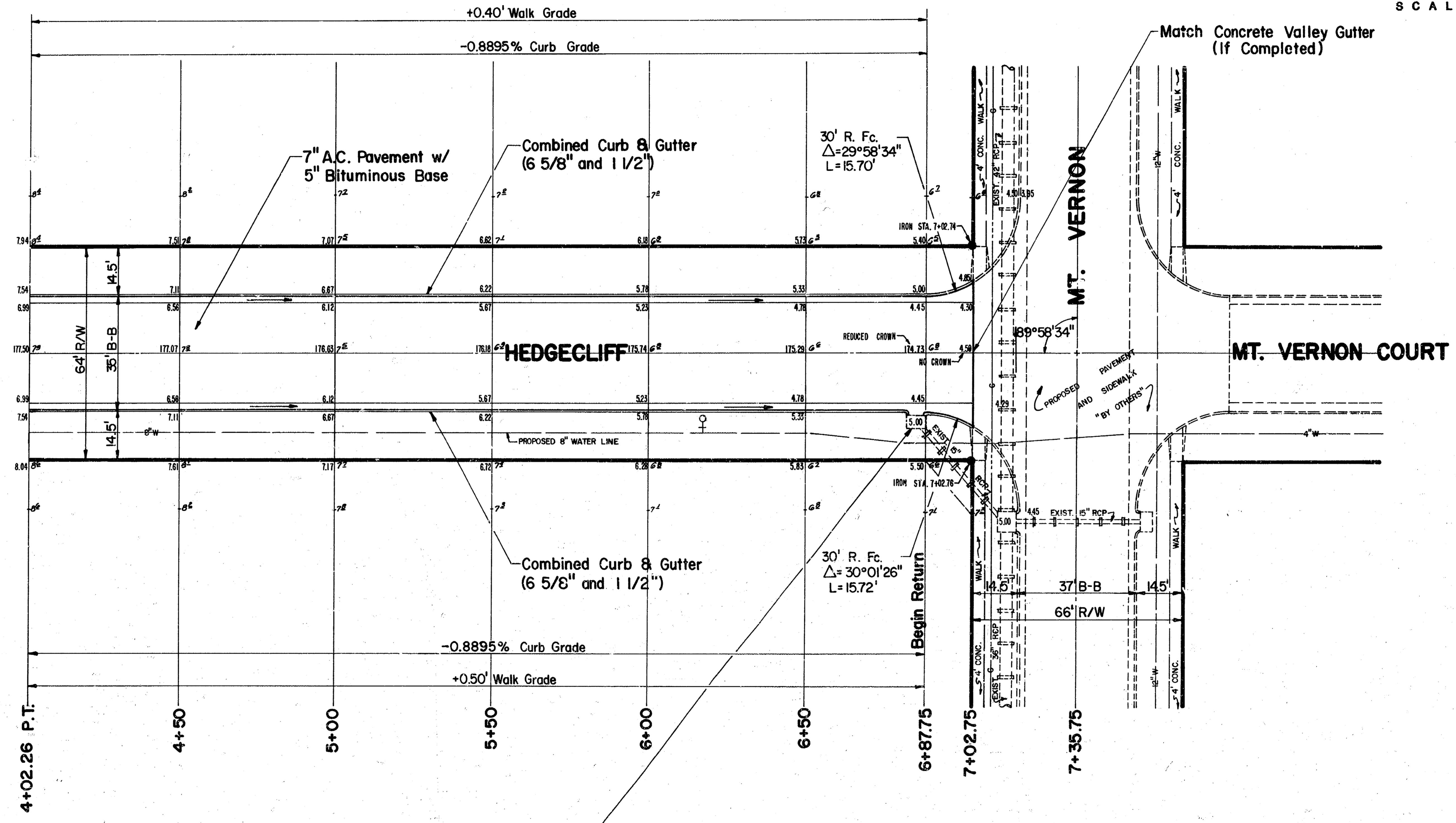
3/9

STATE	PROJECT NO.	FISCAL YEAR	SHEET NO.	TOTAL SHEETS
-------	-------------	-------------	-----------	--------------



PLAN	SURVEYED	BY	DATE
	NOTE BOOK NO.		
PROFILE	GRADES CHECKED		
	STRUCTURE NOTATIONS CHG.		

PROFILE	SURVEYED	BY	DATE
	NOTE BOOK NO.		
PLAN	GRADES CHECKED		
	STRUCTURE NOTATIONS CHG.		

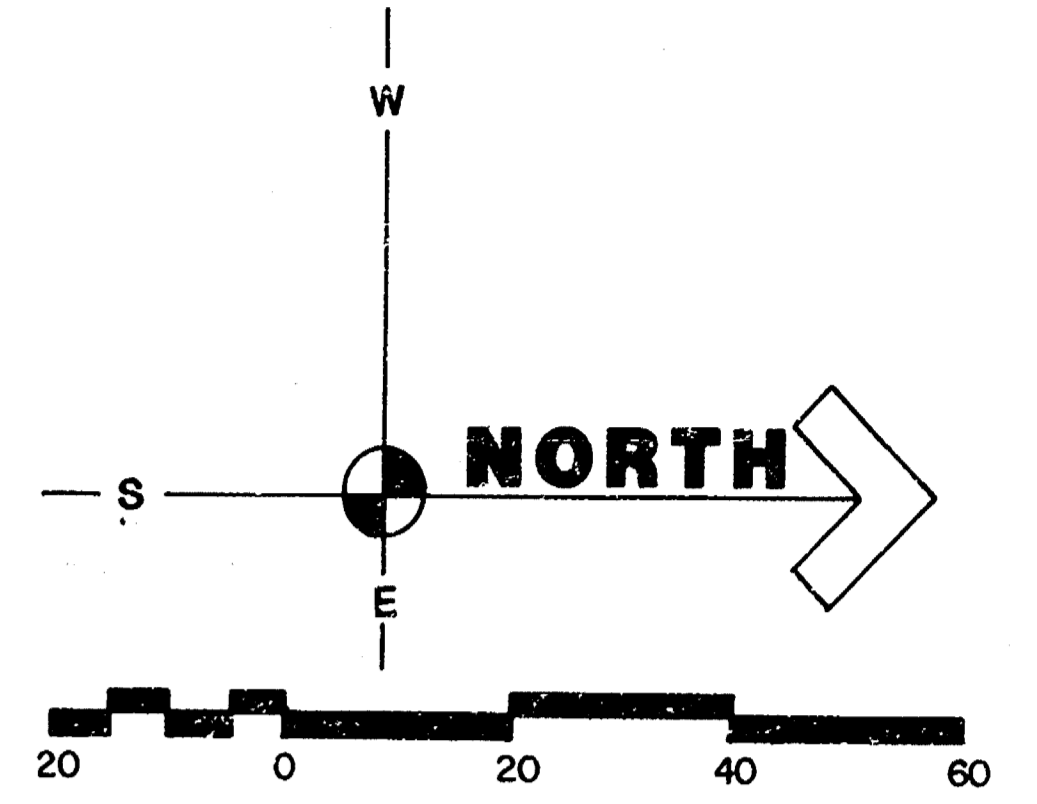


Const. Inlet hook up to Exist. Type IA Inlet Adjust Top to 175.00

NOTE: Reduce Crown from Full Height at Sta. 6+50 to the Crown Grade shown at Sta. 7+02.75

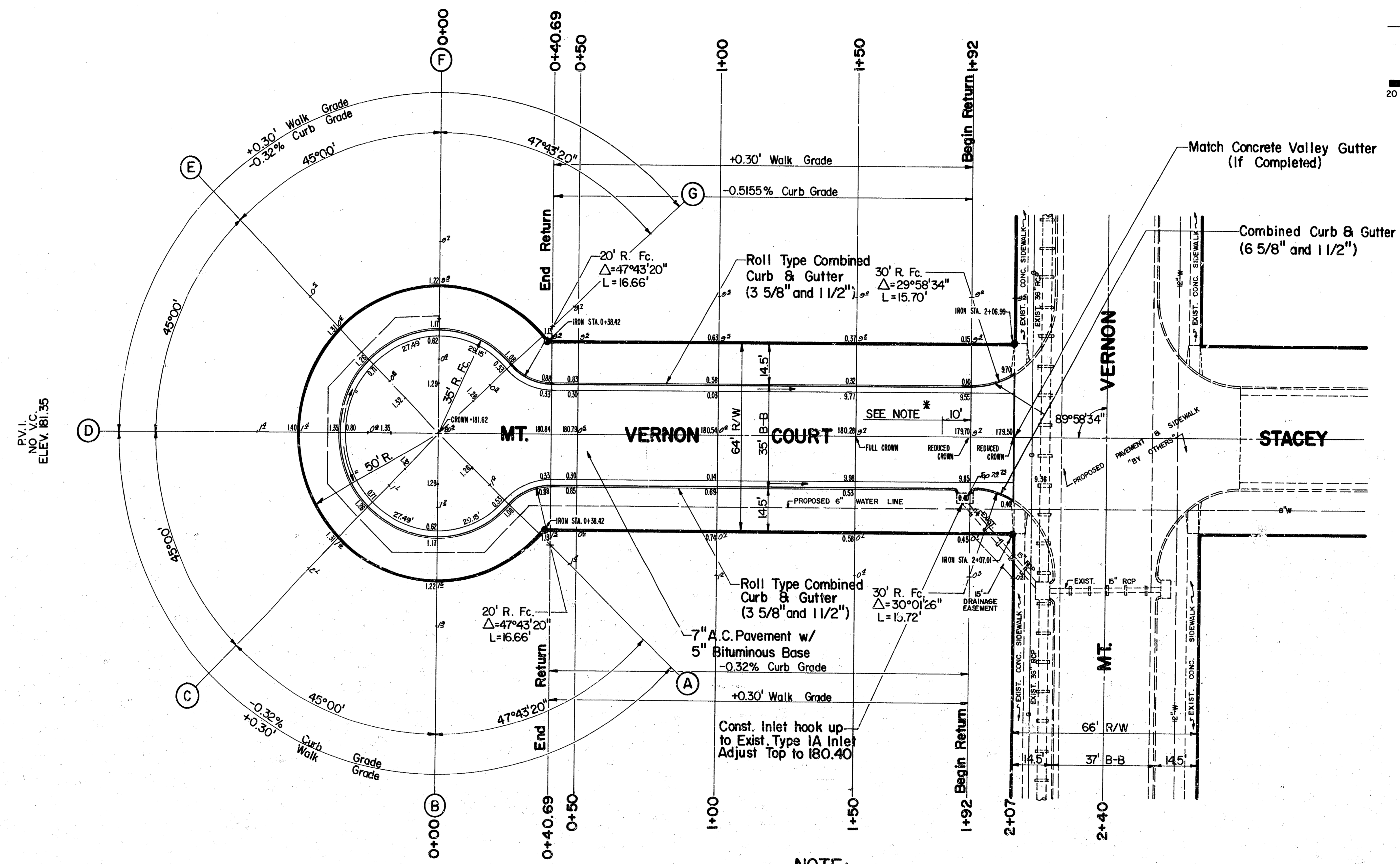
POE & ASSOCIATES OF KANSAS INC. CONSULTING ENGINEERS <small>434N. Oliver, Suite 110 • Wichita, KS 67208 • 316-855-4114</small>	
ENGINEER	K.H.
ENGR. TECH.	
DRAWN BY	T.E.B.
DATE	DEC. 1988
SHEET	4 OF 9
Hedgecliff CITY OF WICHITA, KANSAS PROJECT NO. 472-76-245-81853-000-000-001	

STATE	PROJECT NO.	FISCAL YEAR	SHEET NO.	TOTAL SHEETS
-------	-------------	-------------	-----------	--------------



PLAN	DATE	BY
	NO.	NO.
SURVEYED		
ALIGNED		
CHECKED		
RT. OF WAY CHECKED		
NO.		

PROFILE	DATE	BY
	NO.	NO.
SURVEYED		
GRADES CHECKED		
STRUCTURE NOTATIONS CHKD		
NO.		

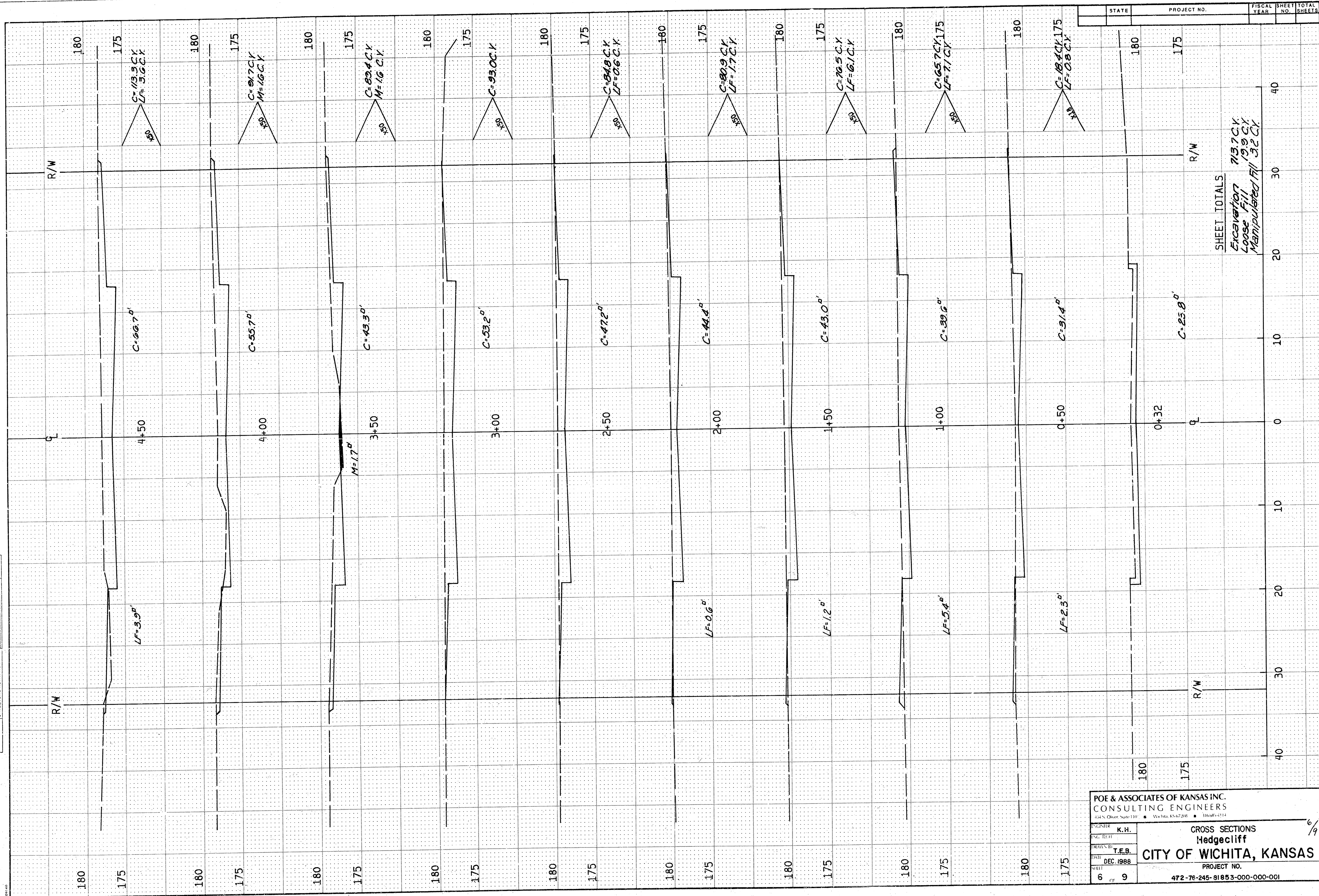


- NOTE:**
- *10' Transition from Full Height Combined Curb & Gutter to Roll Type Combined Curb & Gutter to be Paid for as Roll Type Curb (3 5/8" and 1 1/2").
 - Reduce Crown from Full Height at Sta. 1+50 to the Crown shown at Sta. 2+07.
 - Top of Curb Elevations shown are for 6 5/8" Combined Curb & Gutter. Top of 3 5/8" Roll Curb is 0.25 below the Elevations shown.

POE & ASSOCIATES OF KANSAS INC. CONSULTING ENGINEERS <small>434 N. Oliver, Suite 110 • Wichita, KS 67208 • 316/855-1114</small>		5/9
ENGINEER: K.H. DRAWN BY: T.E.B. DATE: DEC. 1988 SHEET: 5 OF 9	Mt. Vernon Court CITY OF WICHITA, KANSAS PROJECT NO. 472-76-215-81853-000-000-001	

PLAN
 DATE: _____ BY: _____
 PLOTTED: _____
 NOTE BOOK NO. _____
 ALIGNMENT CHECKED: _____
 RT. OF WAY CHECKED: _____

PROFILE
 DATE: _____ BY: _____
 PLOTTED: _____
 NOTE BOOK NO. _____
 B. M. NOTED: _____
 STRUCTURE NOTATIONS (IF ANY): _____



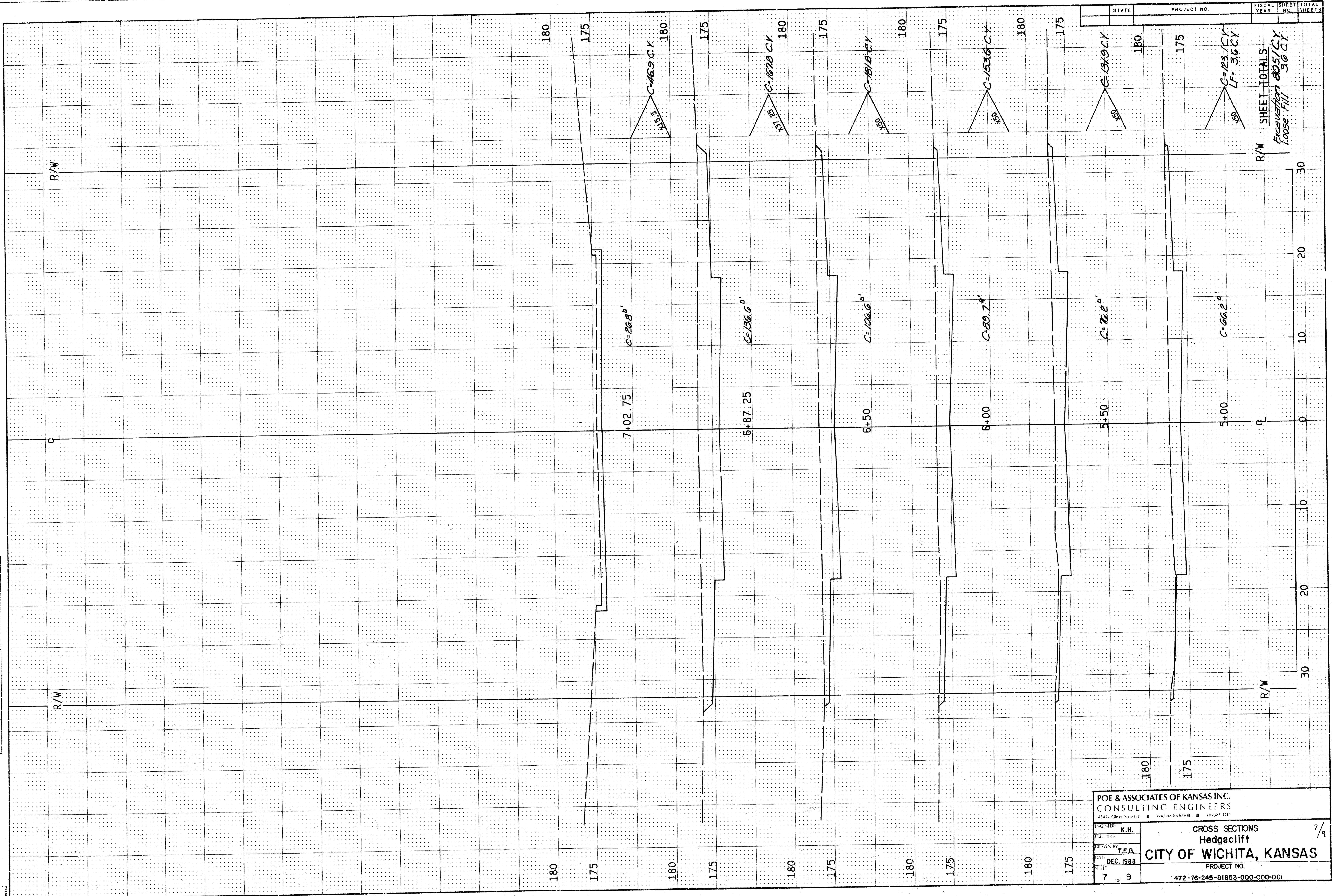
POE & ASSOCIATES OF KANSAS INC. CONSULTING ENGINEERS <small>224 S. Olive, Suite 1101 • Wichita, KS 67202 • 316-261-2114</small>	
ENGINEER K.H.	CROSS SECTIONS Hedgecliff CITY OF WICHITA, KANSAS PROJECT NO. 472-76-245-81853-000-000-001
DRAWN BY T.E.B.	
DATE DEC. 1988	
SHEET 6 OF 9	

SHEET TOTALS
 Excavation 713.7 CY
 Loose Fill 19.9 CY
 Manipulated Fill 3.2 CY

FISCAL YEAR	SHEET NO.	TOTAL SHEETS

PLAN SURVEYED BY DATE
 NOTE BOOK NO. SURVEYED BY DATE
 ALIGNMENT CHECKED BY DATE
 RT. OF WAY CHECKED BY DATE

PROFILE SURVEYED BY DATE
 PLOTTED BY DATE
 NOTE BOOK NO. SURVEYED BY DATE
 STRUCTURE NOTATION CHECKED BY DATE



POE & ASSOCIATES OF KANSAS INC.
 CONSULTING ENGINEERS
 434 N. Olive Suite 110 • Wichita, KS 67208 • 316-265-4111

ENGINEER: K.H.
 DRAWN BY: T.E.B.
 DATE: DEC 1988
 SHEET: 7 OF 9

CROSS SECTIONS
 Hedgecliff
 CITY OF WICHITA, KANSAS
 PROJECT NO. 472-76-245-81853-000-000-001

7/9

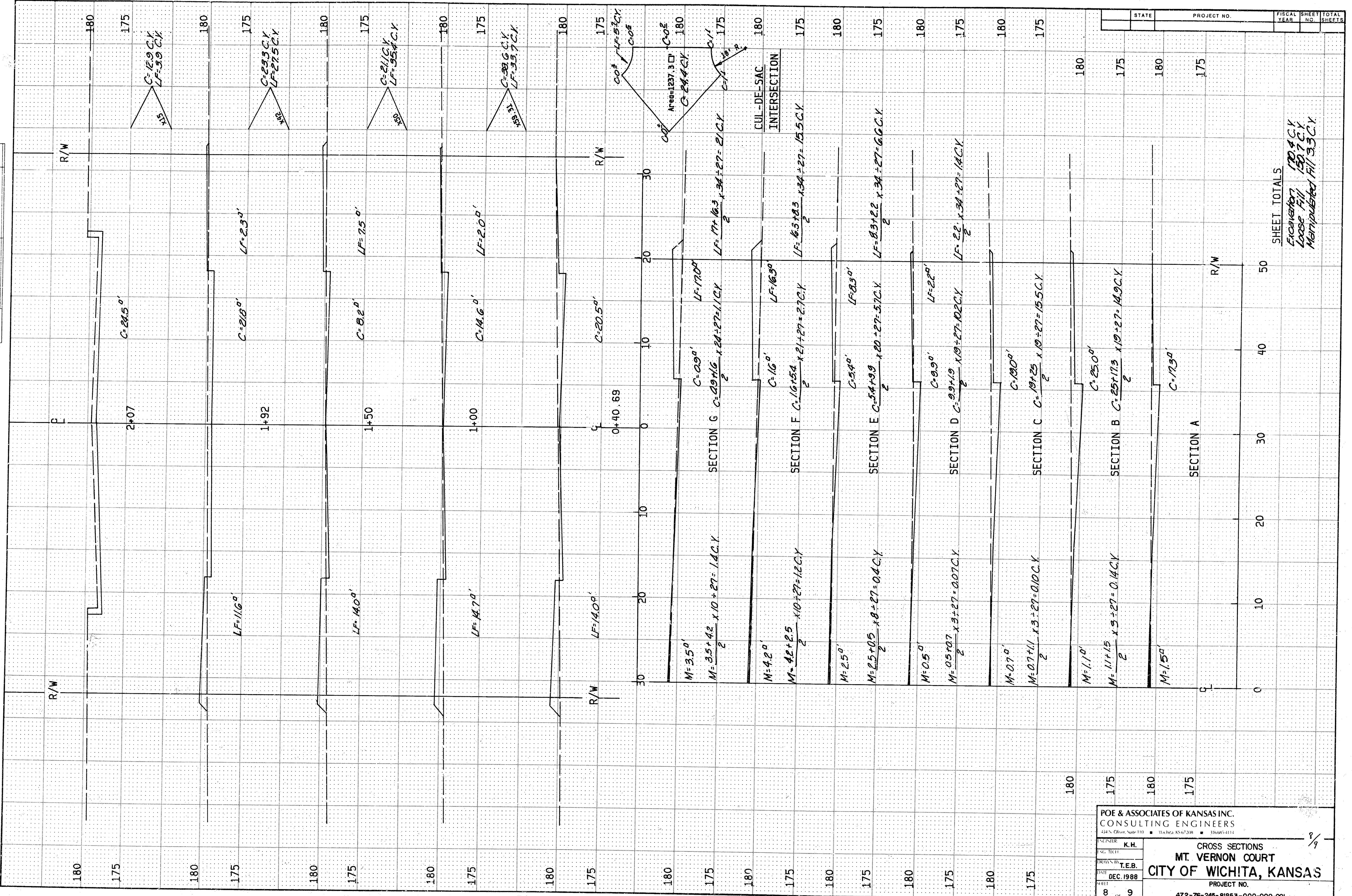
FISCAL YEAR	SHEET NO.	TOTAL SHEETS

STATE	PROJECT NO.

SHEET TOTALS
 Excavation 805 CY
 Loose Fill 36 CY

PROFILE
 SURVISED BY _____ DATE _____
 PLOTTED BY _____
 GRADES CHECKED _____
 STRUCTURAL NOTATIONS _____
 NO. _____

PLAN
 SURVIVED BY _____ DATE _____
 PLOTTED BY _____
 NOTE BOOK NO. _____
 RT. OF WAY CHECKED _____
 NO. _____



POE & ASSOCIATES OF KANSAS INC.
 CONSULTING ENGINEERS
 234 N. Olive, Suite 110 • Wichita, KS 67203 • 316.865.4112

CROSS SECTIONS
 MT. VERNON COURT
 CITY OF WICHITA, KANSAS
 PROJECT NO. 472-76-245-81853-000-000-001

DATE DEC. 1988
 SHEET 8 OF 9

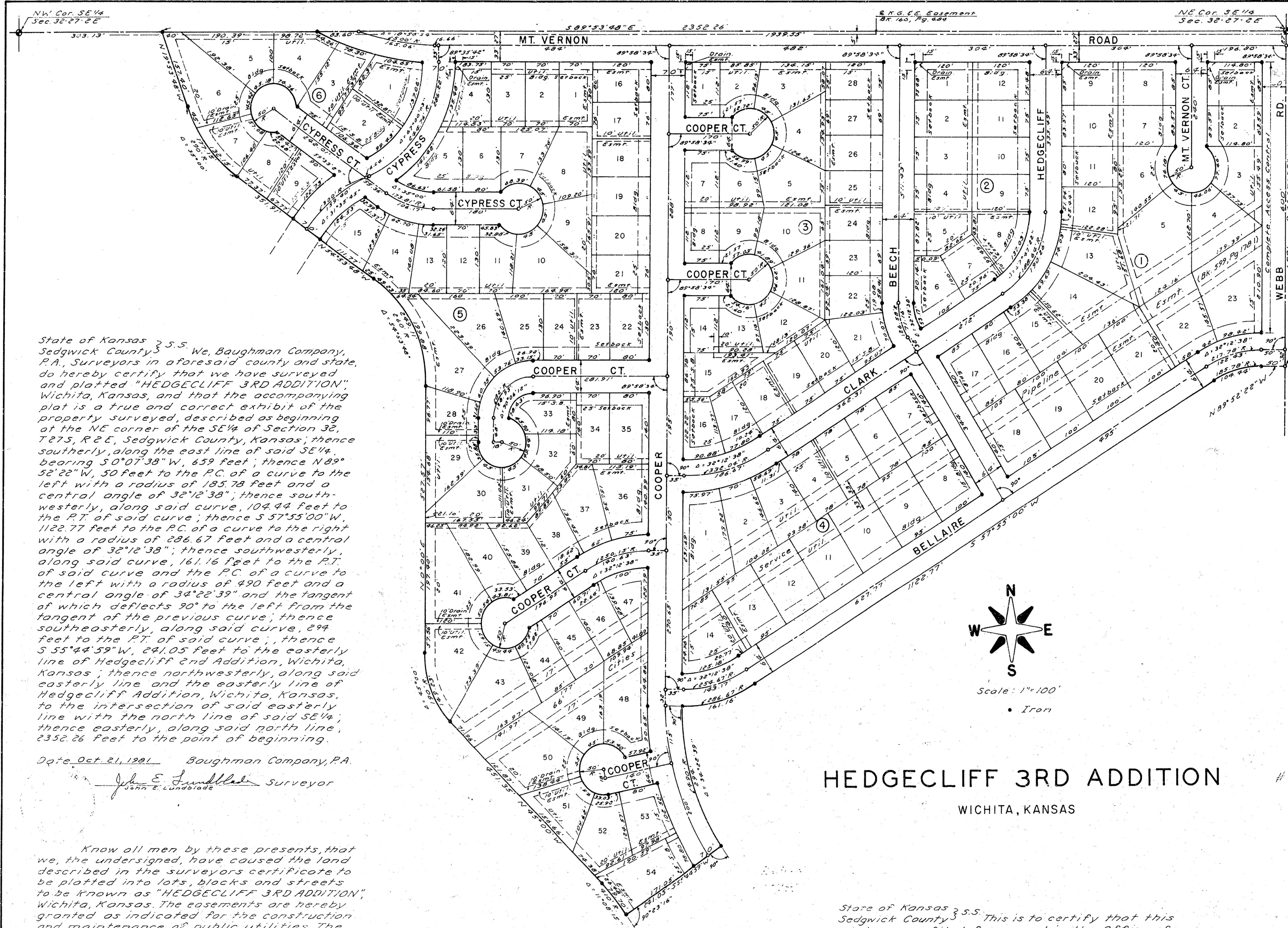
SHEET TOTALS
 Excavation 1204 CY
 Loose Fill 1507 CY
 Manipulated Fill 33 CY

STATE	PROJECT NO.	FISCAL YEAR	SHEET NO.	TOTAL SHEETS
			8	9

R-1 3-29

R-1 3-29

R-1 3-29



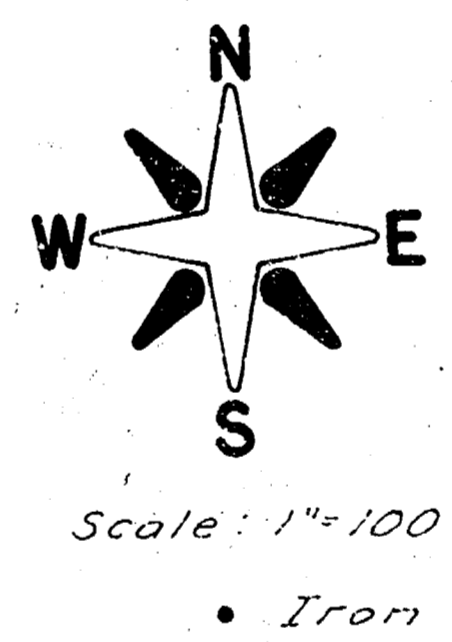
State of Kansas 3 S.S. We, Baughman Company, P.A., Surveyors in aforesaid county and state, do hereby certify that we have surveyed and platted "HEDGECLIFF 3RD ADDITION", Wichita, Kansas, and that the accompanying plat is a true and correct exhibit of the property surveyed, described as beginning at the NE corner of the SE 1/4 of Section 32, T27S, R2E, Sedgwick County, Kansas; thence southerly, along the east line of said SE 1/4, bearing S 0° 07' 38" W, 659 feet; thence N 89° 52' 22" W, 50 feet to the P.C. of a curve to the left with a radius of 185.78 feet and a central angle of 32° 12' 38"; thence southwesterly, along said curve, 104.94 feet to the P.T. of said curve; thence S 57° 55' 00" W, 1122.77 feet to the P.C. of a curve to the right with a radius of 286.67 feet and a central angle of 32° 12' 38"; thence southwesterly, along said curve, 161.16 feet to the P.T. of said curve and the P.C. of a curve to the left with a radius of 490 feet and a central angle of 34° 22' 39" and the tangent of which deflects 90° to the left from the tangent of the previous curve; thence southeasterly, along said curve, 294 feet to the P.T. of said curve; thence S 55° 44' 59" W, 291.05 feet to the easterly line of Hedgecliff 2nd Addition, Wichita, Kansas; thence northwesterly, along said easterly line and the easterly line of Hedgecliff Addition, Wichita, Kansas, to the intersection of said easterly line with the north line of said SE 1/4, thence easterly, along said north line, 2352.26 feet to the point of beginning.

Date Oct. 21, 1981 Baughman Company, P.A.
 John E. Lundblad Surveyor
 John E. Lundblad

Know all men by these presents, that we, the undersigned, have caused the land described in the surveyors certificate to be platted into lots, blocks and streets to be known as "HEDGECLIFF 3RD ADDITION", Wichita, Kansas. The easements are hereby granted as indicated for the construction and maintenance of public utilities. The streets are hereby dedicated to and for the use of the public. All abutters rights of access to Webb Rd. over and across the east line of Block 1 are hereby granted to the City of Wichita, Kansas.
 The Fidelity Investment Co.
 Ivan R. Salyer, President
 Kessler Bros., Inc.
 Frank Kessler, President

State of Kansas 3 S.S. The foregoing instrument was acknowledged before me this 12th day of October, 1981, by The Fidelity Investment Co. by Ivan R. Salyer, President, and Kessler Bros., Inc. by Frank Kessler, President.
 Shirley K. M. Elm, Notary Public
 My Commission Expires 10/17/85

HEDGECLIFF 3RD ADDITION
 WICHITA, KANSAS



This plat of "HEDGECLIFF 3RD ADDITION", Wichita, Kansas, has been submitted to and approved by the Wichita Sedgwick County Metropolitan Area Planning Commission, Wichita, Kansas, Dated this 21st day of Oct., 1981.

Wichita Sedgwick County Metropolitan Area Planning Commission
 Vice Chairman
 Secretary

This plat approved and all dedications shown hereon accepted by the Board of City Commissioners, Wichita, Kansas, this day of _____, 1981.

Mayor
 City Clerk

This plat approved and all dedications shown hereon accepted by the Board of County Commissioners, Sedgwick County, Kansas, this day of _____, 1981.

Chairman
 Commissioner
 Commissioner
 County Clerk

Entered on transfer record this day of _____, 1981.
 County Clerk

State of Kansas 3 S.S. This is to certify that this plat was refiled for record in the Office of the Register of Deeds this day of Oct., 1982, at o'clock, M., to correct the front lot dimensions of Lot 12, Blk. 1 from 55.51 feet to 51.94 feet, and Lot 54, Blk. 5 from 75 feet to 78.80 feet.
 Register of Deeds
 Deputy

State of Kansas 3 S.S. This is to certify that this plat has been filed for record in the Office of the Register of Deeds this day of _____, 1981, at o'clock, A.M., and is duly recorded.

Register of Deeds
 Deputy

S-1-3-26

R-1 3-29

41 2R-153-290