

Street Improvements for **BADER 3rd ADDITION**

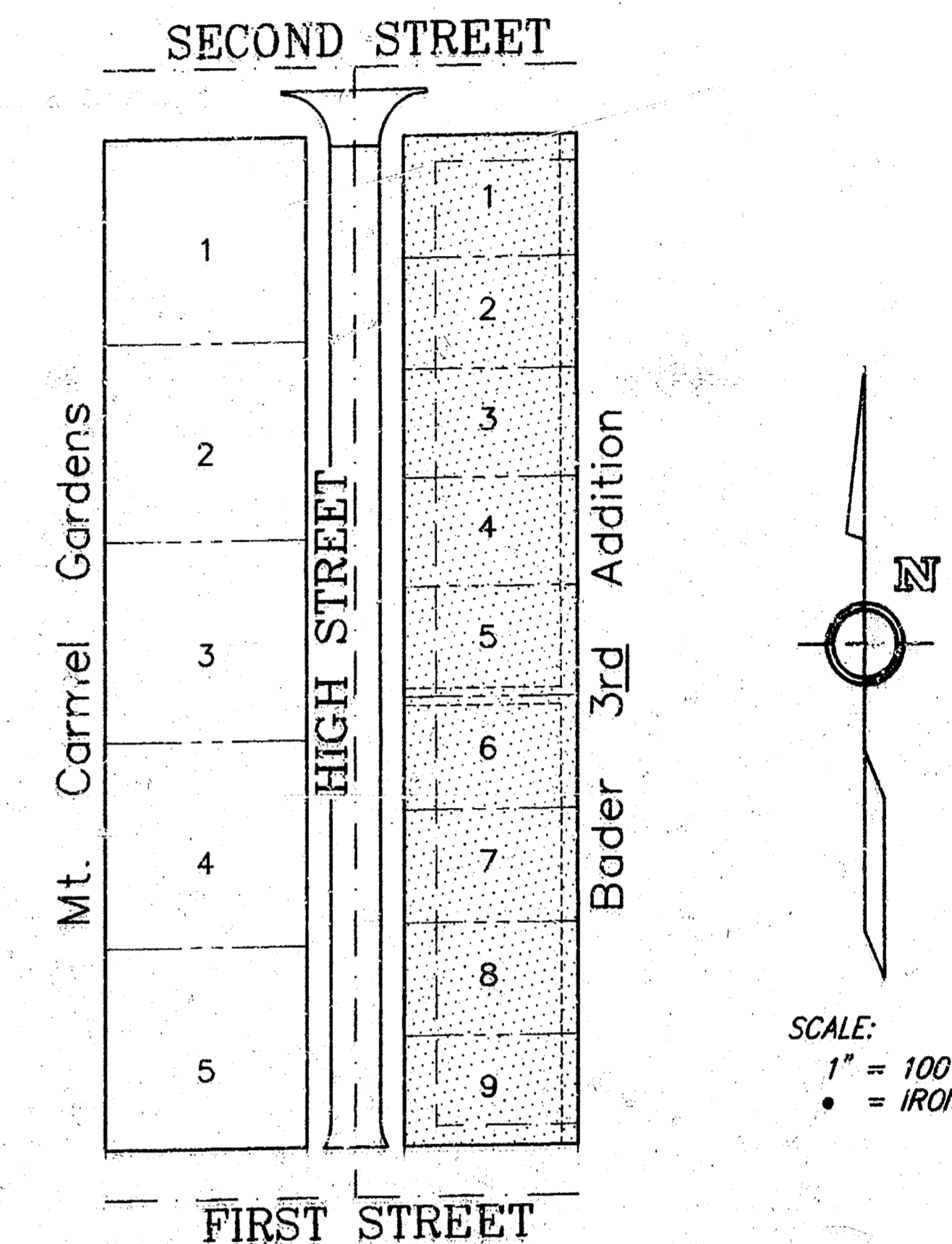
HIGH STREET: From N.L. First Street to S.L. Second Street

Project No.

472-76-245-81739-000-000-001

Index Code 761601

CITY OF WICHITA, KANSAS
Michael E. Lindebak City Engineer



General Notes

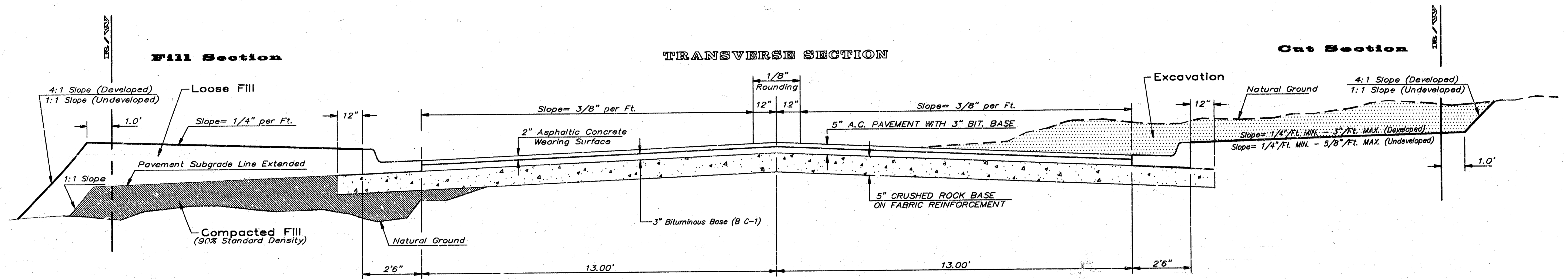
1. Utility service lines, poles, valve boxes, meters, et cetera are to be adjusted as necessary by others prior to construction, unless the plans specifically call for their adjustment by the Contractor or unless the plans specifically identify a utility to be adjusted by its owner during construction. Existing utilities and their location, as shown on the plans, represent the best information obtainable for design. The contractor will be required to work around existing utilities within the right-of-way which do not conflict with proposed construction.
2. A saw cut of at least one-half the depth of existing surface courses or one-fourth the depth of the existing total pavement thickness shall be provided at locations where proposed construction abuts existing surface course or pavement for which partial removal of that surface or pavement is required. Sawed joint to facilitate removal within three (3) feet of existing joints will not be permitted and for such instances the limits of removal shall extend to the existing joint. Such saw cuts will not be paid for directly and this cost shall be considered as subsidiary to the removal of the surface or pavement.
3. This project includes a certain amount of roll type curb construction. Roll Curbs shall be depressed through all driveway openings when such drives are constructed as a part of the project.
4. No more than six drives, 22 feet in width, or equivalent combinations thereof, are to be constructed with this project.
5. Widened gutter section of combined curb and gutter at intersections will not be paid for directly, and this cost shall be considered as subsidiary to the other contract pay items of work.
6. Mailboxes within the limits of the project shall be removed and replaced by the Contractor as approved by the Engineer. Contractor will be required to make satisfactory provisions for mail delivery to properties affected by this project during its construction.
7. Limits of earthwork shall match existing ground elevations at the right-of-way line unless otherwise noted on the plans with a new finished grade elevation. When a new finished grade elevation is shown, the earthwork shall extend one foot beyond the right-of-way line and then sloped up or down using permissible slopes to match the existing ground surface.
8. All entrance and cross road pipe within the project limits shall be removed by the Contractor unless otherwise noted on the plans. Removal of such pipes shall conform to the applicable section of the Standard Specifications.
9. Contractor shall give property owners abutting this project, whose yards will be lower than the new finished grade elevations at the right-of-way line, an opportunity to utilize excess excavated material from the project to regrade their yards to drain to the new pavement. Contractor will be required to dump and spread the excess material as required by the specification when requested by the property owner. The Contractor shall ascertain that a dirt order form has been properly executed by the property owner before any such excess material is delivered to such properties.
10. The Contractor shall be responsible for preserving property irons. The Contractor will be required to re-establish any property irons which are damaged or destroyed by his construction operations. Such irons shall be re-established by a licensed land surveyor in accordance with state laws.
11. Driveway widths and locations shown on the plan are tentative. Contractor will be required to obtain properly executed driveway request form signed by property owner or his authorized representative verifying such driveway widths and locations. Such forms shall be submitted to the Engineer for his review and approval.
12. The Contractor shall adjust Water Valve Boxes and Fire Hydrants as required by the special provisions. The Water Department shall field locate water valves or time during construction when requested by the Contractor. It shall be the Contractor's responsibility to preserve such field locations during the construction process. Water valves, water valve boxes or fire hydrants damaged during construction shall be repaired by the contractor at his own expense.
13. The Contractor shall give all property owners and/or tenants of developed property abutting the project visits a minimum of ten (10) days advance notice prior to start of construction.
14. Two lanes of traffic shall be maintained open on 2nd Street during construction.

Benefit District

Index	
SHEET	DESCRIPTION
1.	Title Sheet
2.	31' Pavement Detail
3.	31' Alt. Pavement Detail
4.	Wheelchair Ramp And Valley Gutter Details
5.-6.	High Street
7.-8.	Earthwork Cross Sections
9.	Plot Copy



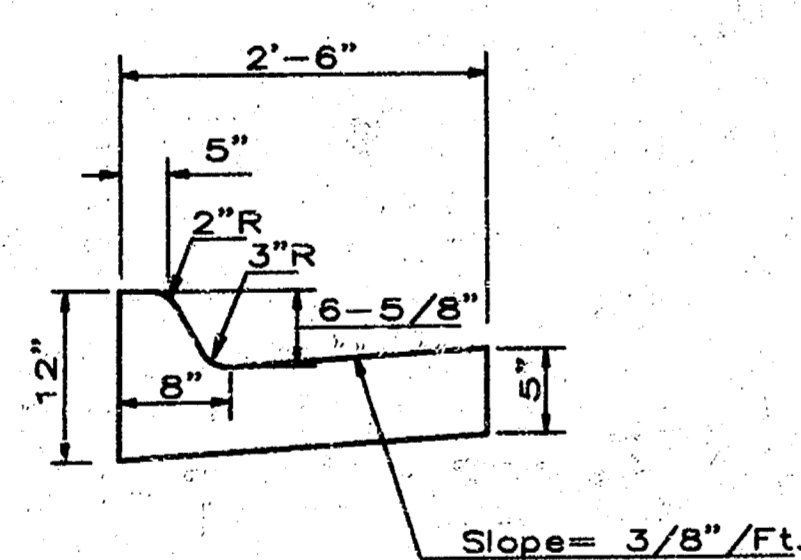
TYPICAL 31' B-B PAVEMENT DETAILS



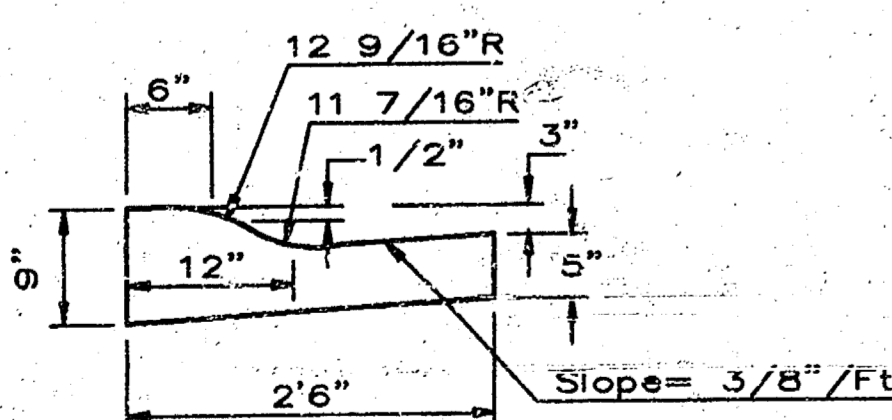
The crushed rock shall have the following gradation:

Size	% Retained
2-1/2"	0
3/4"	20 to 60
#4	50 to 80
#40	80 to 94
#200	90 to 98

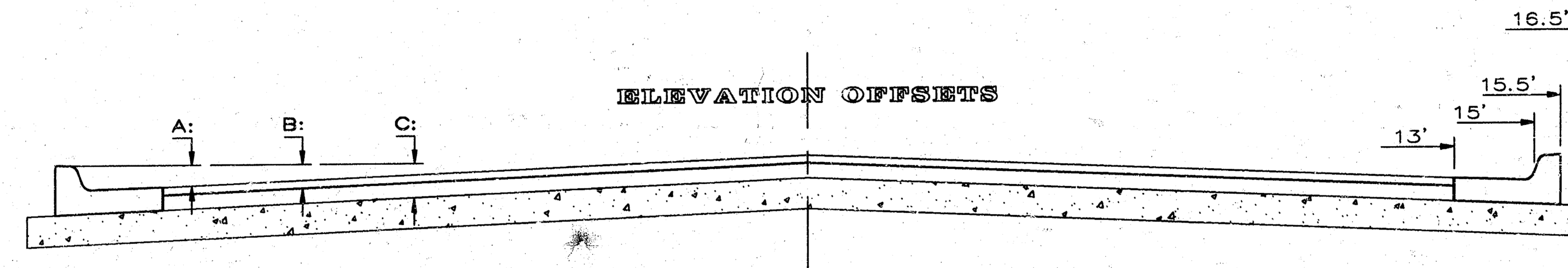
Rock quality shall conform to the requirements specified by the 100T 1990 Edition Standard Specification Subsection 1102 for durability Class I.



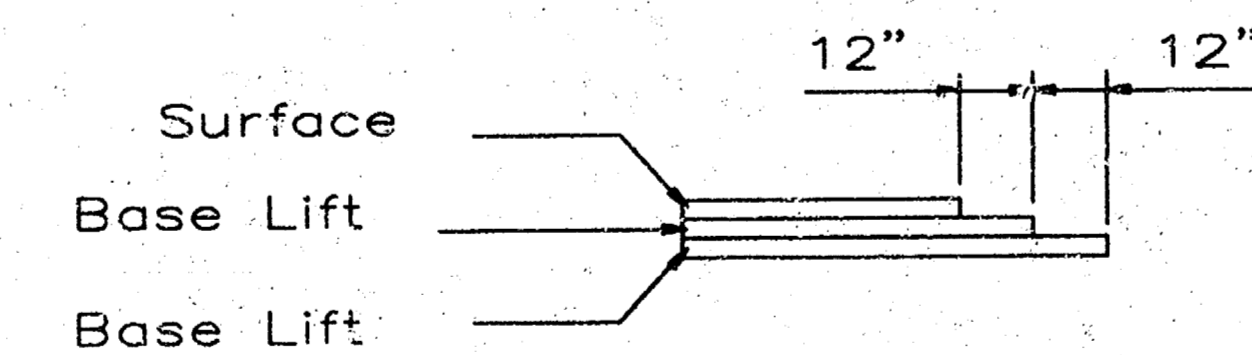
COMBINED CURB & GUTTER



COMBINED ROLL TYPE CURB & GUTTER

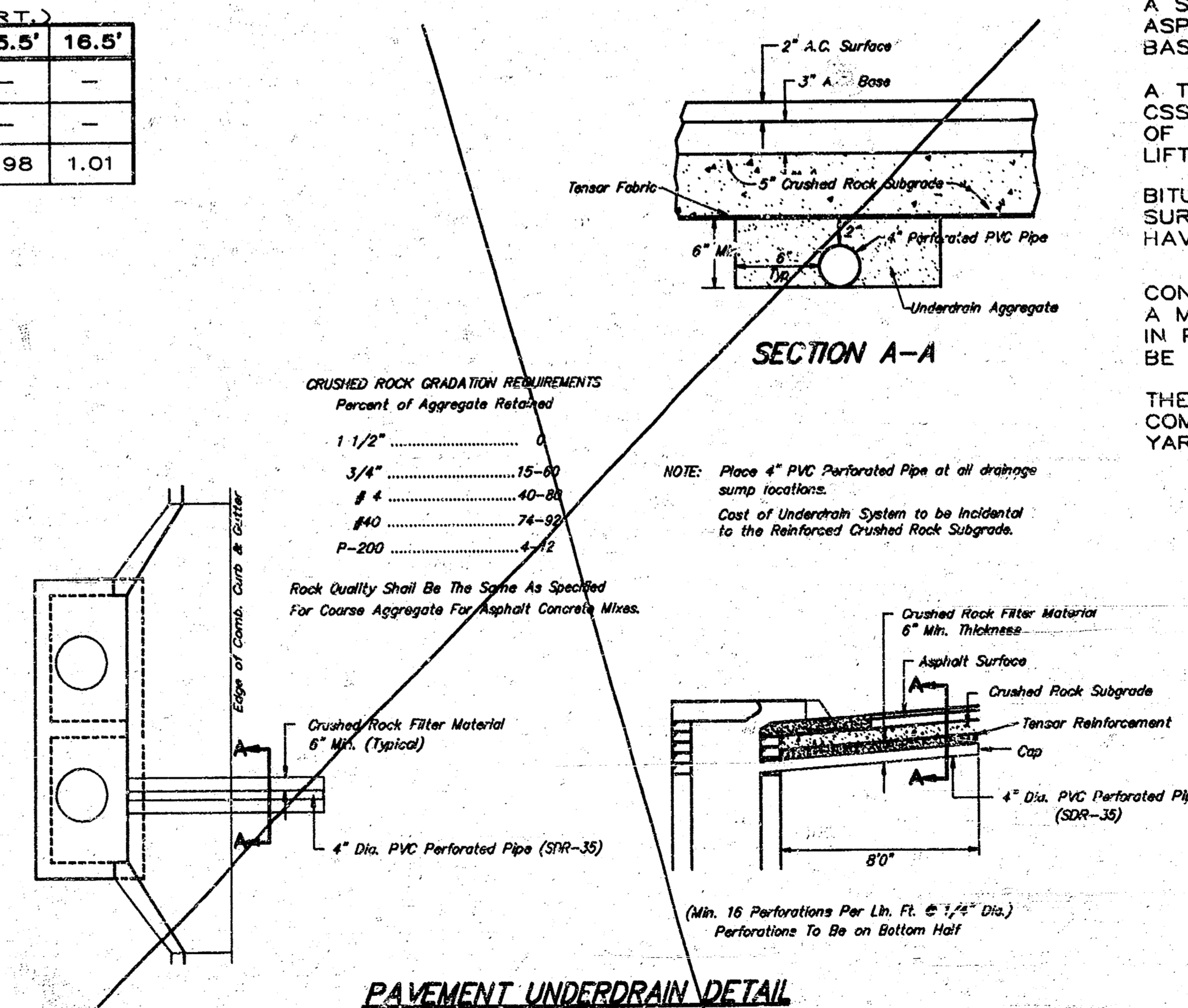


	DISTANCE FROM CENTERLINE (L.T. & RT.)										
	0'	2'	4'	6'	7.5'	10'	12'	13'	15'	15.5'	16.5'
A: Top of Curbs to Top of Surface Lift	0.10	0.14	0.21	0.27	0.32	0.39	0.46	0.49	-	-	-
B: Top of Curbs to Top of Upper Base Lift	0.27	0.31	0.37	0.44	0.48	0.56	0.62	0.65	-	-	-
C: Top of Curbs to Top of C.R. Subgrade	0.52	0.56	0.62	0.69	0.73	0.81	0.87	0.90	0.97	0.98	1.01



TRANSVERSE CONSTRUCTION JOINTS

Transverse construction joints shall be constructed in flexible base pavements at locations where pavement joints existing flexible base pavement as shown by the detail. All costs associated with the construction of the transverse joint shall be included in the bid price for Square Yards 5" ASPHALTIC CONCRETE (3" BITUMINOUS BASE).



General Notes

FABRIC BASE REINFORCEMENT SHALL BE B X 1100 GEOGRID AS MANUFACTURED BY TENSAR CORPORATION OR APPROVED EQUAL. FABRIC BASE REINFORCEMENT SHALL BE INSTALLED IN ACCORDANCE WITH MANUFACTURER'S RECOMMENDATIONS. CRUSHED ROCK SHALL BE UNIFORMLY GRADED FROM 1-1/2" MAXIMUM SIZE TO NOT MORE THAN 10% PASSING A NO. 200 SIEVE. ROCK QUALITY SHALL BE THE SAME AS SPECIFIED FOR COARSE AGGREGATE FOR CONCRETE MIXES.

ROCK BASE IS TO BE COMPACTED AND SMOOTHED WITH A STEEL FACED ROLLER PRIOR TO PLACEMENT OF ASPHALT. TACK COAT WILL NOT BE APPLIED TO ROCK BASE.

A TACK COAT OF EMULSIFIED ASPHALT (SC-1H OR CSS-1H) SHALL BE APPLIED AT AN APPROXIMATE RATE OF 0.05 GALLONS PER SQUARE YARD BETWEEN EACH LIFT OF ASPHALTIC MATERIAL.

BITUMINOUS BASE AND ASPHALTIC CONCRETE WEARING SURFACE SHALL BE PLACED WITH A LAYDOWN MACHINE HAVING AUTOMATIC CONTROLS FOR LINE AND GRADE.

CONSTRUCTION JOINTS IN EACH LIFT SHALL BE STAGGERED A MINIMUM DISTANCE OF ONE (1) FOOT FROM JOINTS IN PRECEDING LIFTS AND PLACED SO THAT A JOINT WILL BE CONSTRUCTED ON THE CENTERLINE OF THE TOP LIFT.

THE ASPHALTIC CONCRETE PAVEMENT BETWEEN THE COMBINED CURB AND GUTTER SHALL BE PAID AS SQUARE YARDS OF 5" ASPHALTIC CONCRETE (3" BITUMINOUS BASE).

5 INCH Residential Asphaltic Concrete Pavement with Crushed Rock Base on Fabric Reinforcement
City of Wichita, Kansas

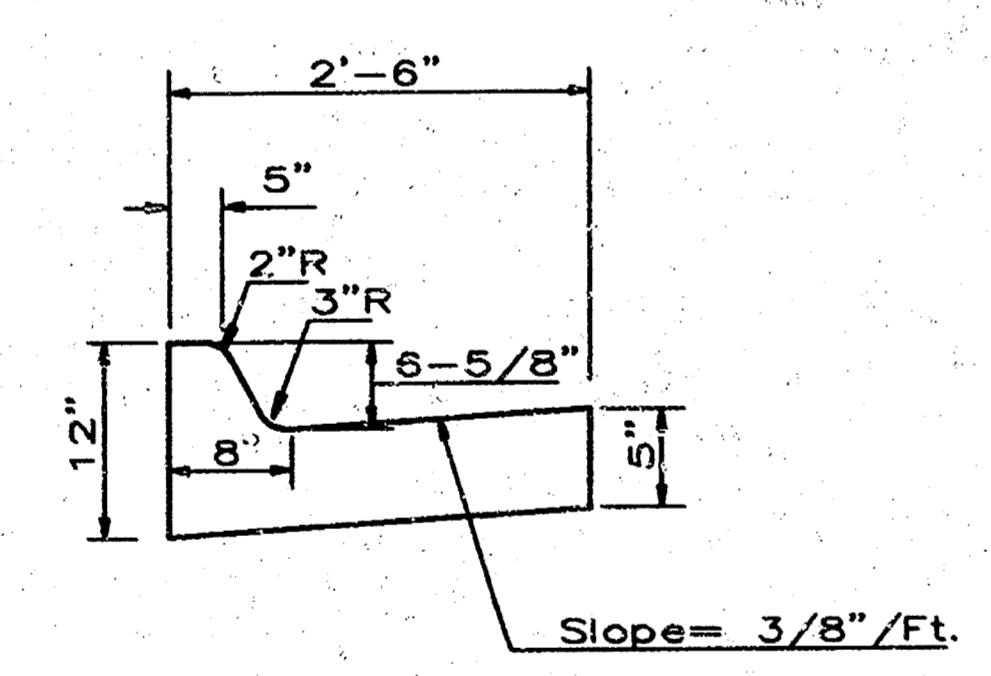
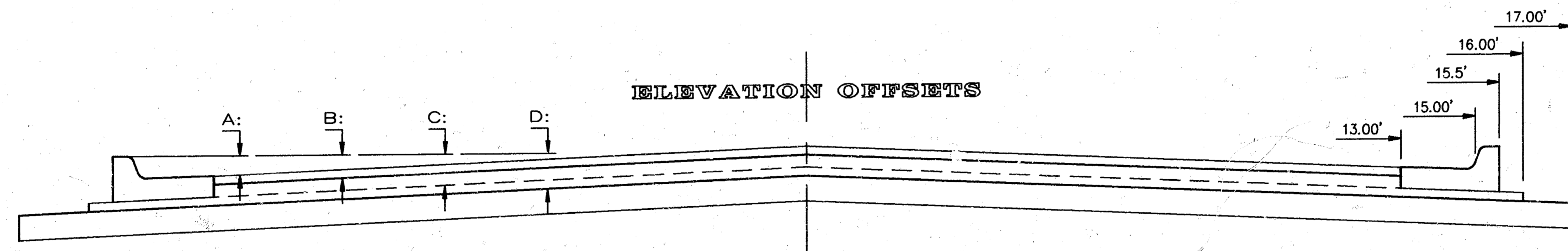
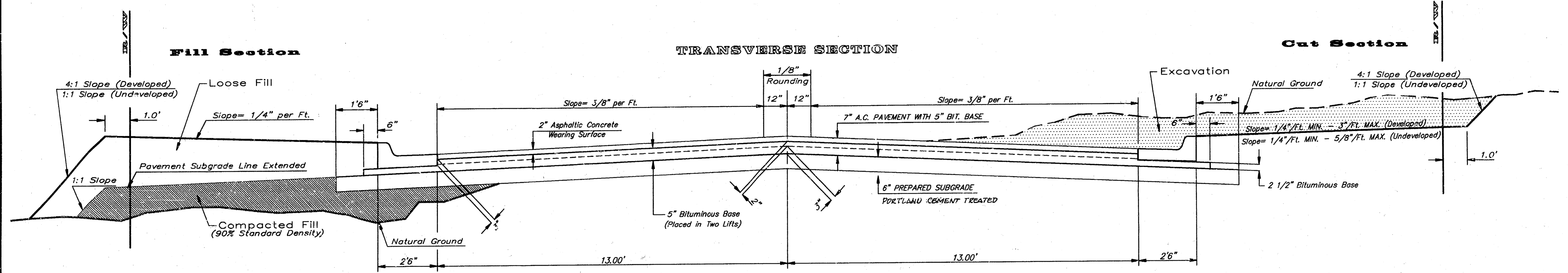
BAUGHMAN COMPANY P. A.
ENGINEERING & SURVEYING
316/262-7271 • 315 ELLIS • WICHITA, KANSAS 67211

PROJECT NUMBER: 472-76-245-81739-000-000-001

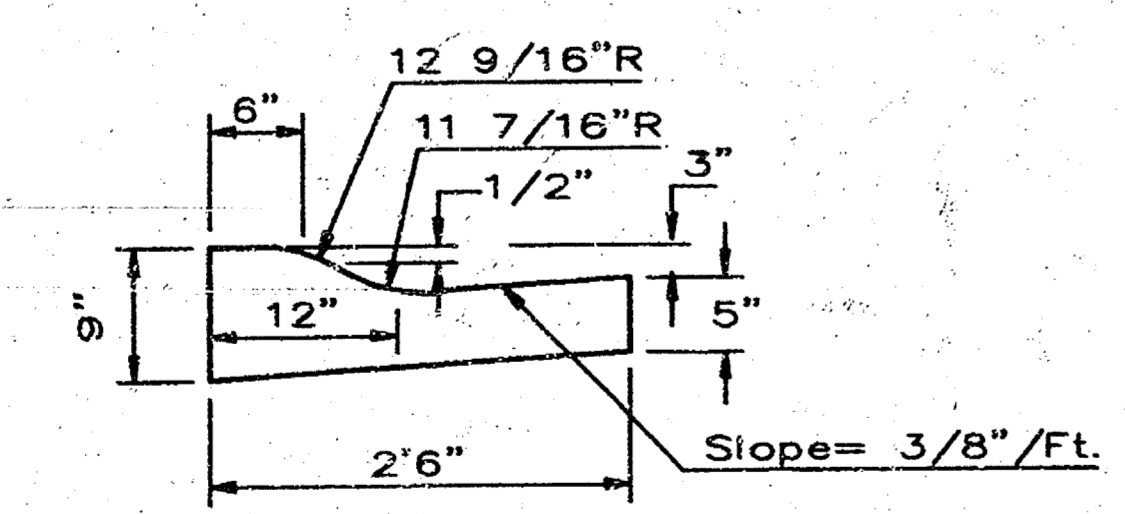
DESIGN: _____ DRAWN: _____ APPROVED: _____ DATE: 9-08-92 SCALE: NONE

SHEET 2 OF 9

TYPICAL 31' B-B PAVEMENT DETAILS (ALTERNATE)

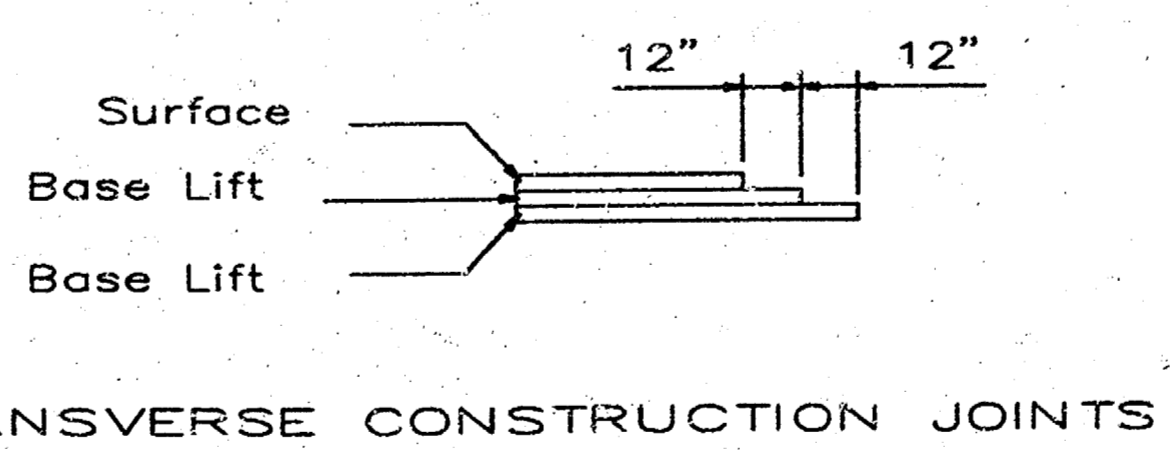


COMBINED CURB & GUTTER



COMBINED ROLL TYPE CURB & GUTTER

	DISTANCE FROM CENTERLINE (L. & RT.)														
	0'	2'	4'	6'	7.5'	10'	12'	13'	15'	15.5'	16.00'	17.00'			
A: Top of Curbs to Top of Surface Lift	0.10	0.14	0.21	0.27	0.32	0.39	0.46	0.49	-	-	-	-	-	-	-
B: Top of Curbs to Top of Upper Base Lift	0.27	0.31	0.38	0.44	0.49	0.56	0.63	0.66	-	-	-	-	-	-	-
C: Top of Curbs to Top of Lower Base Lift	0.44	0.49	0.57	0.64	0.70	0.79	0.87	0.90	0.98	1.00	1.02	-	-	-	-
D: Top of Curbs to Top of Subgrade	0.69	0.73	0.80	0.87	0.93	1.01	1.08	1.12	1.19	1.21	1.23	1.26	-	-	-



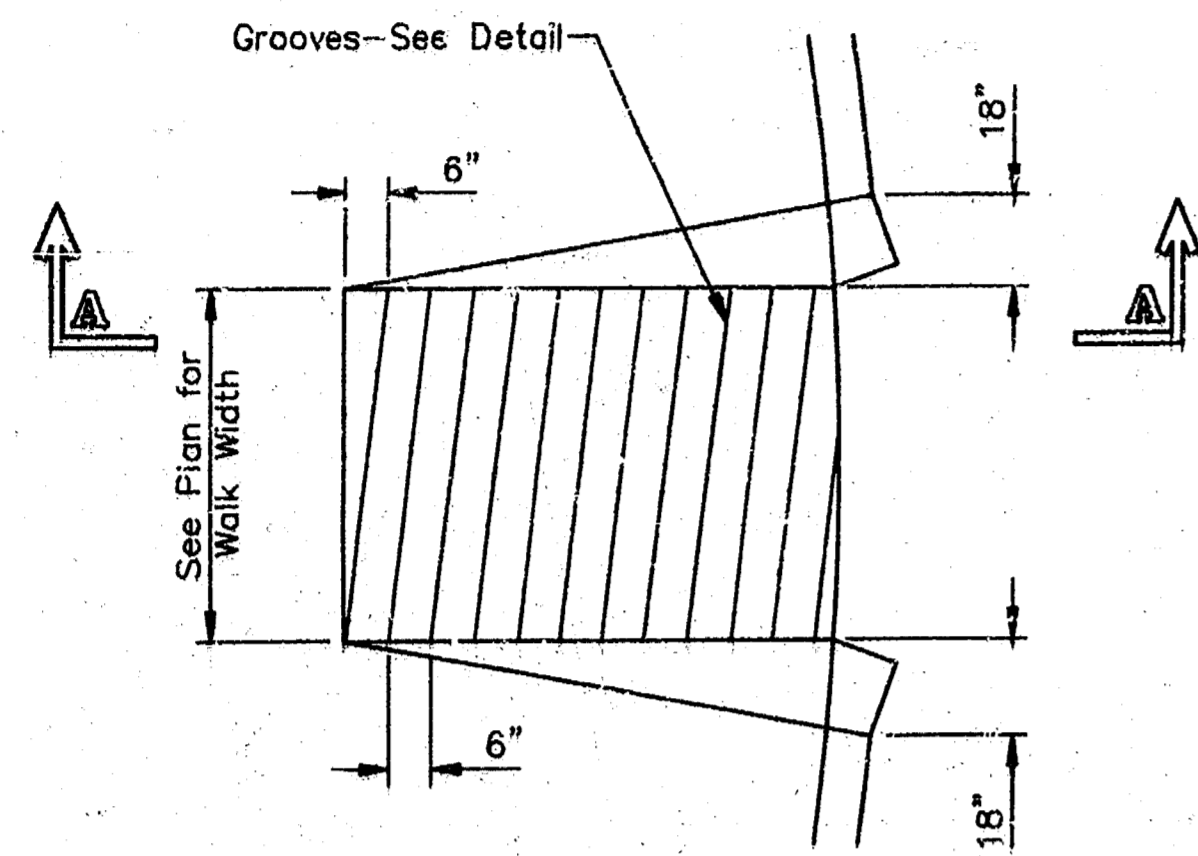
TRANSVERSE CONSTRUCTION JOINTS

Transverse construction joints shall be constructed in flexible base pavements at locations where pavement joints existing flexible base pavement as shown by the detail. All costs associated with the construction of the transverse joint shall be included in the bid price for Square Yards 7" ASPHALTIC CONCRETE (5" BITUMINOUS BASE).

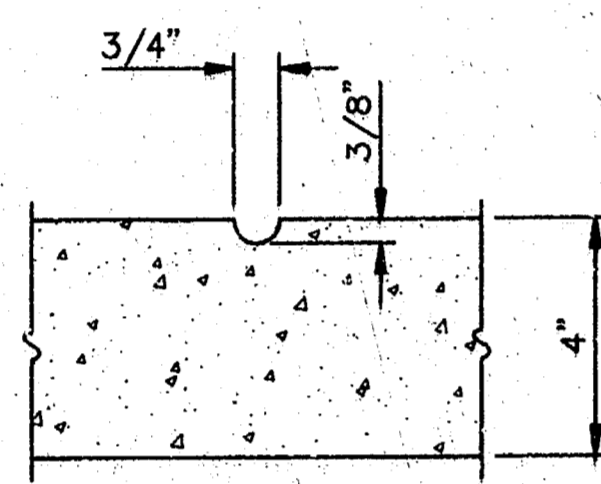
General Notes

- A TACK COAT OF EMULSIFIED ASPHALT (SC-1H OR CSS-1H) SHALL BE APPLIED AT AN APPROXIMATE RATE OF 0.05 GALLONS PER SQUARE YARD BETWEEN EACH LIFT OF ASPHALTIC MATERIAL.
- BITUMINOUS BASE AND ASPHALTIC CONCRETE WEARING SURFACE SHALL BE PLACED WITH A LAYDOWN MACHINE HAVING AUTOMATIC CONTROLS FOR LINE AND GRADE.
- CONSTRUCTION JOINTS IN EACH LIFT SHALL BE STAGGERED A MINIMUM DISTANCE OF ONE (1) FOOT FROM JOINTS IN PRECEDING LIFTS AND PLACED SO THAT A JOINT WILL BE CONSTRUCTED ON THE CENTERLINE OF THE TOP LIFT.
- THE ASPHALTIC CONCRETE PAVEMENT BETWEEN THE COMBINED CURB AND GUTTER SHALL BE PAID AS SQUARE YARDS OF 7" ASPHALTIC CONCRETE (5" BITUMINOUS BASE).

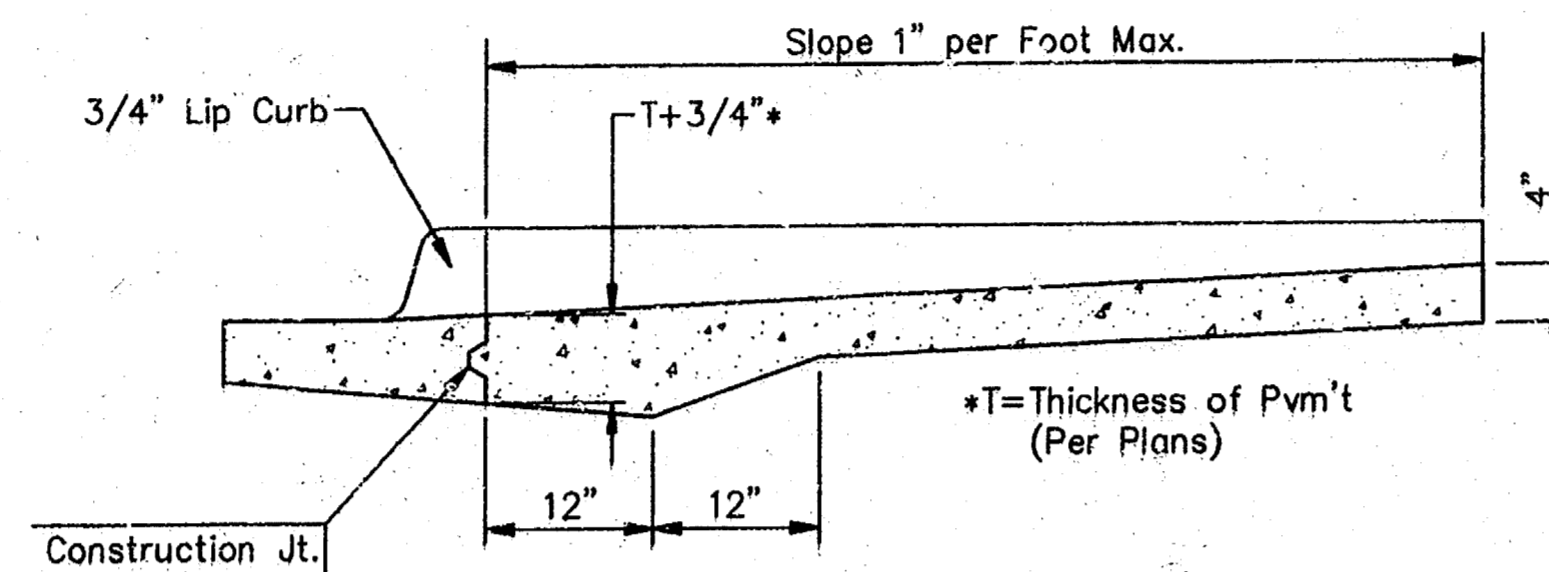
7 INCH Residential Asphaltic Concrete Pavement with 5 Inch Bituminous Base City of Wichita, Kansas			
BAUGHMAN COMPANY P. A. ENGINEERING & SURVEYING 316/262-7271 • 315 ELLIS • WICHITA, KANSAS 67211			REV.
PROJECT NUMBER 472-76-245-81739-000-000-001			SHEET 3
DESIGN	DRAWN	APPROVED	DATE
			9-08-92
		SCALE	NONE



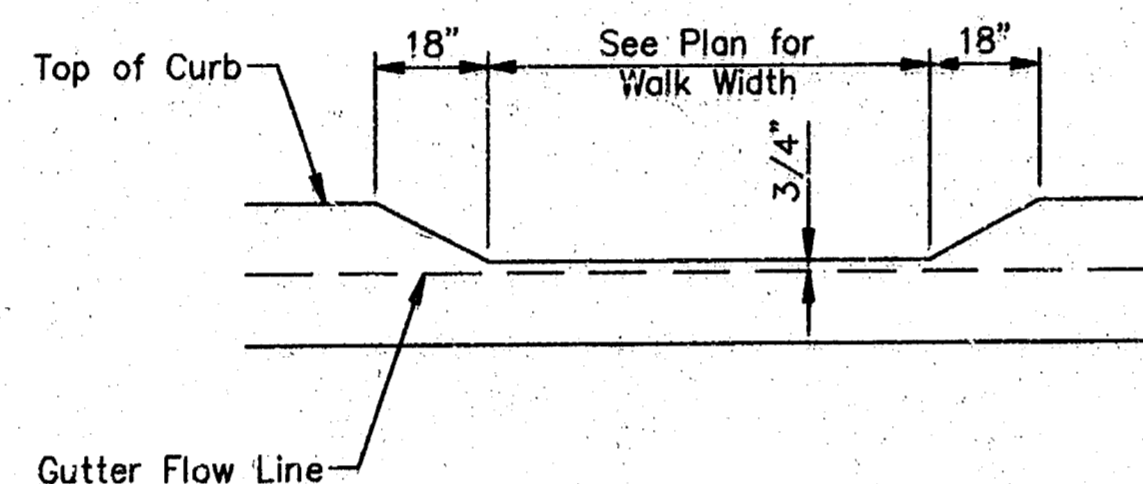
PLAN



GROOVE DETAIL

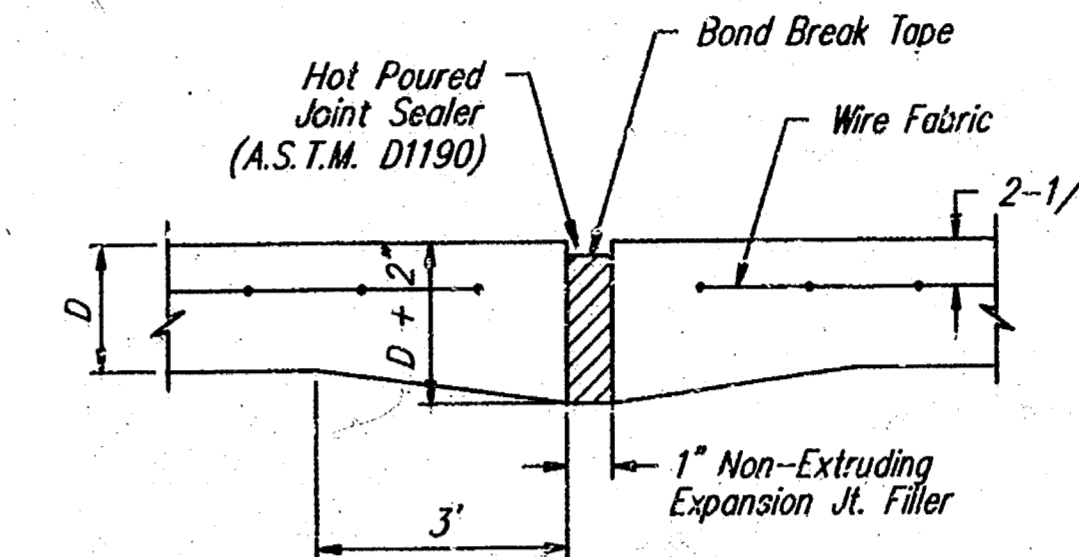


SECTION A-A
Not to Scale



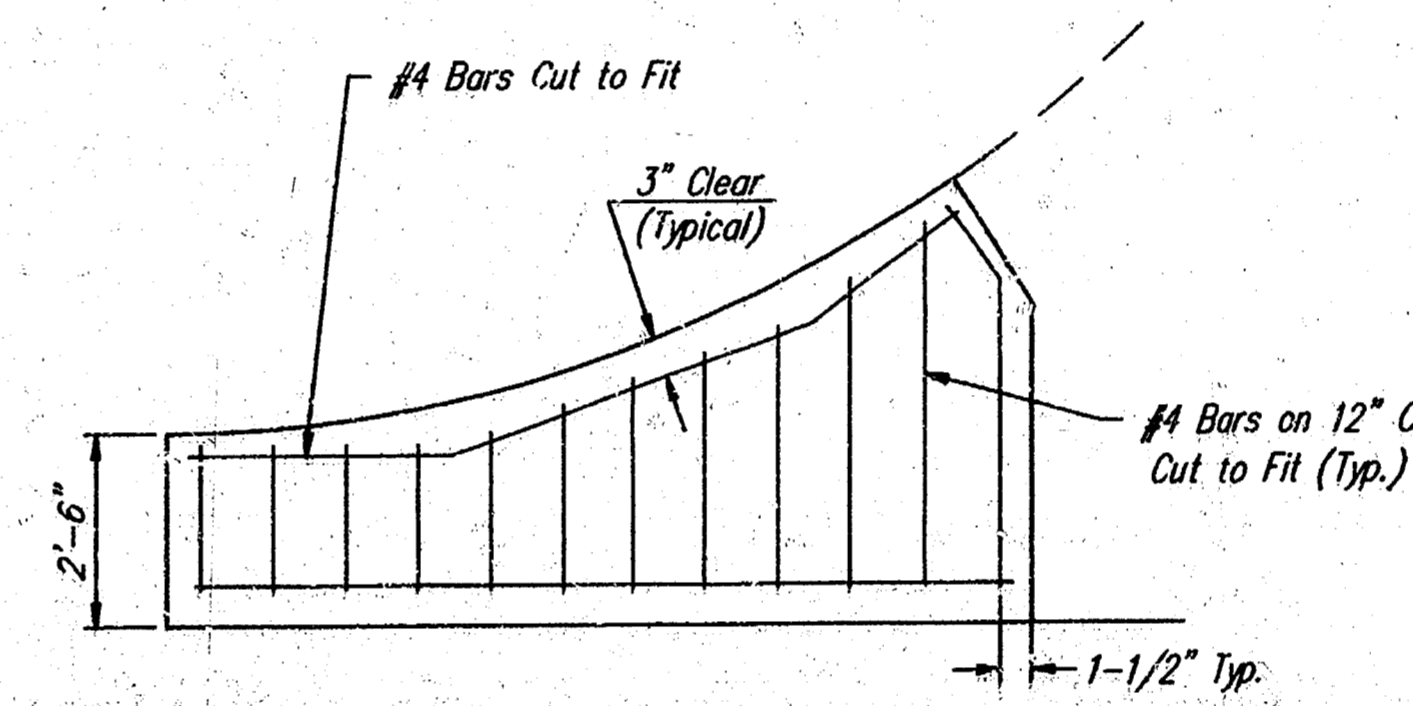
DEPRESSED CURB DETAIL

WHEELCHAIR RAMP DETAIL B

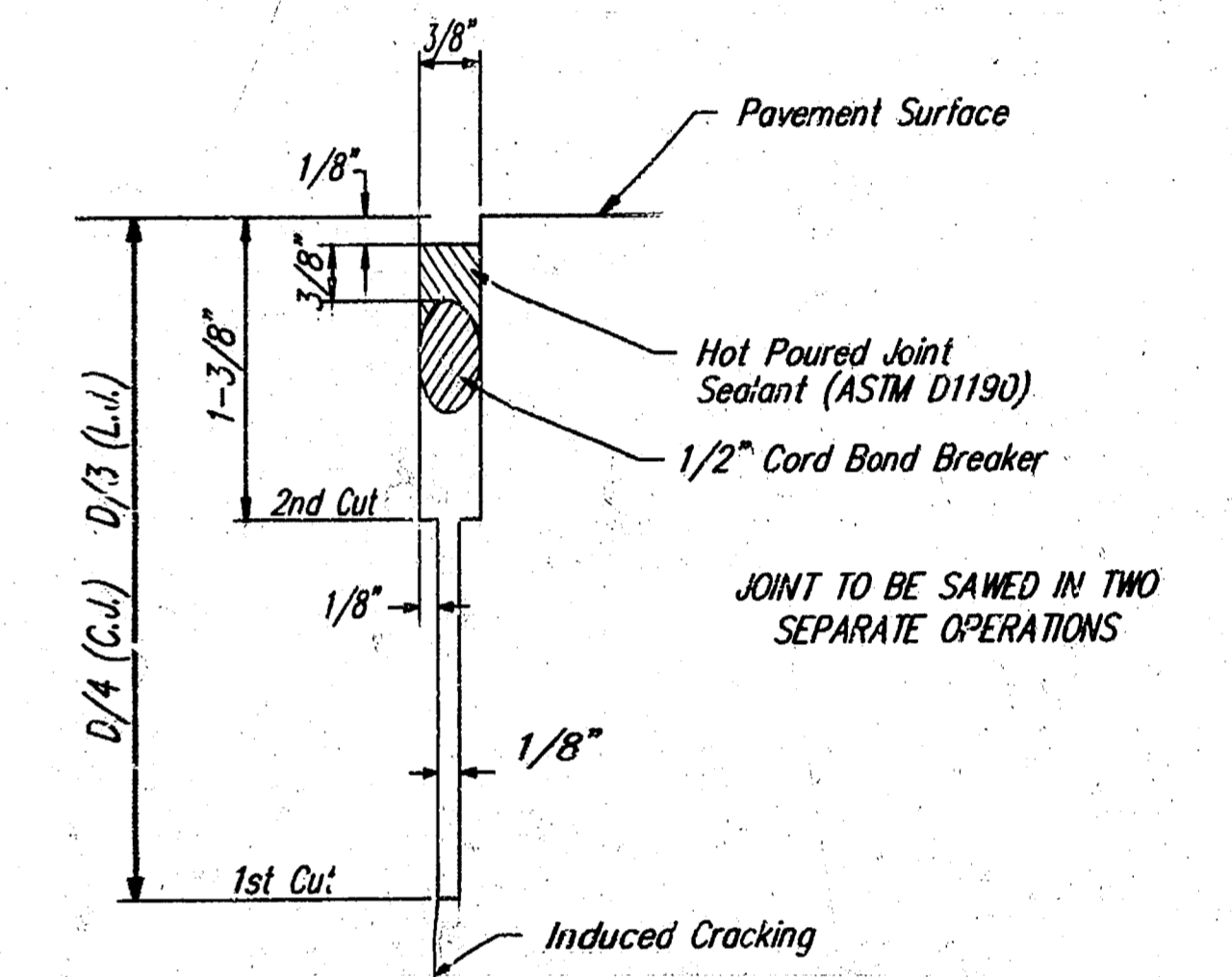


EXPANSION JOINT

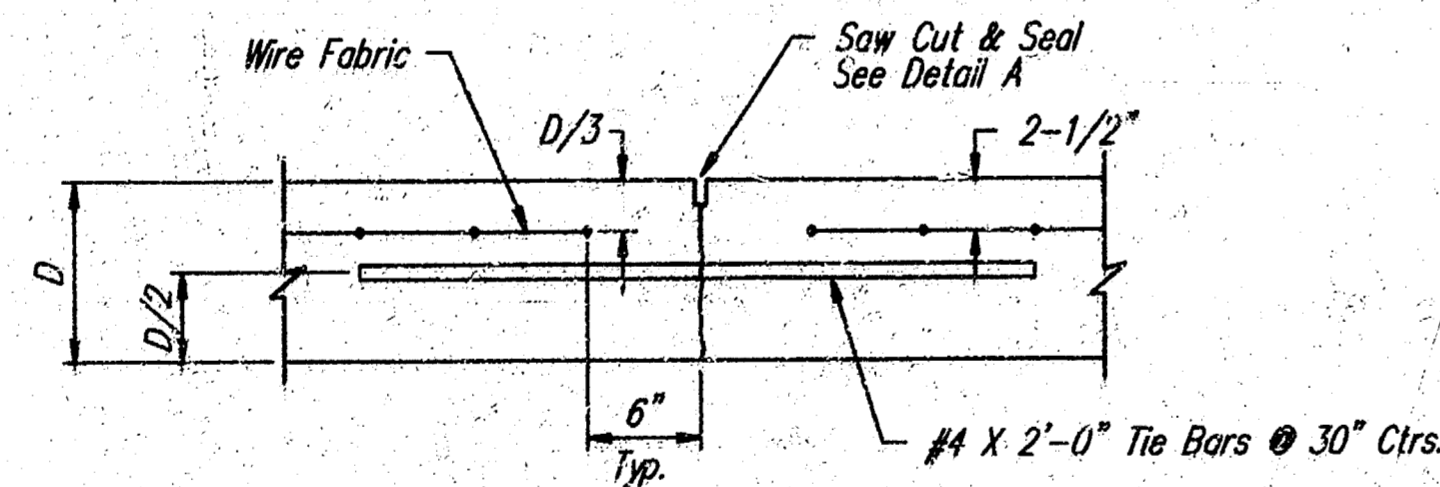
NOTE: Extra Thickness to be Subsidiary to Price of Square Yards Pavement



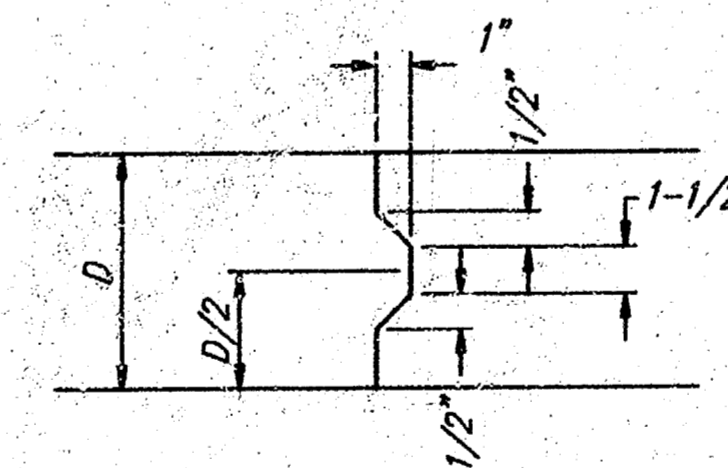
WING REINFORCING DETAIL



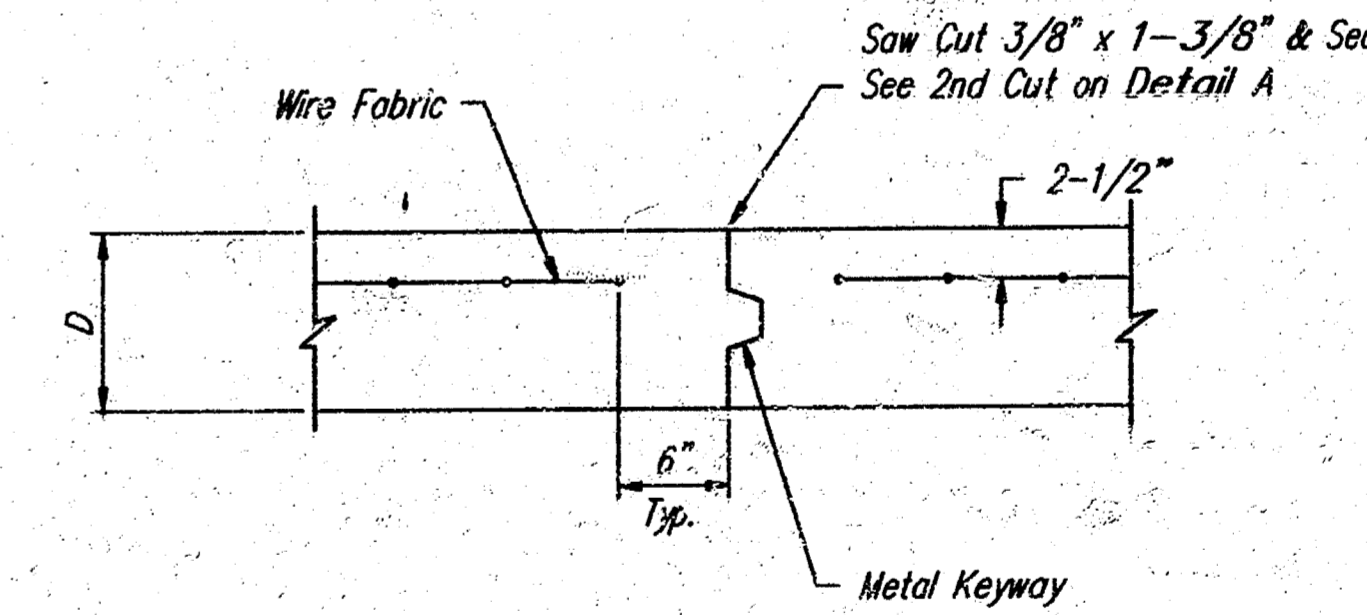
SAW JOINT DETAIL



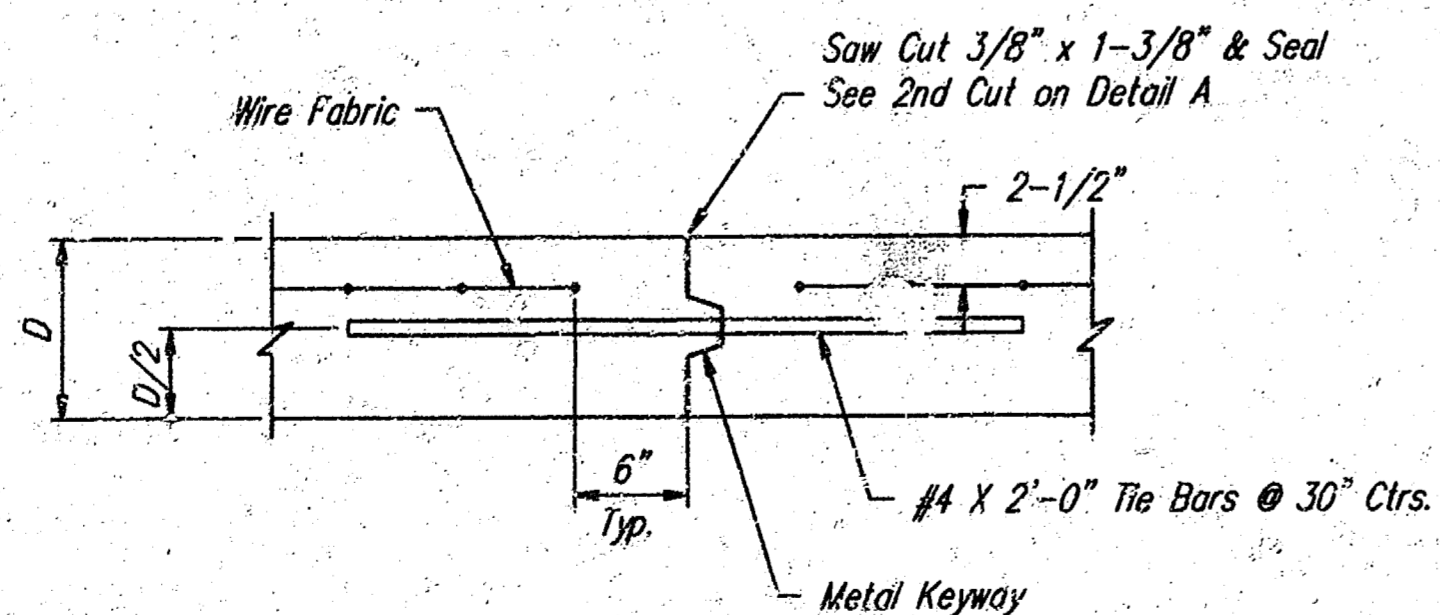
LONGITUDINAL JOINT DETAIL (L.J.)



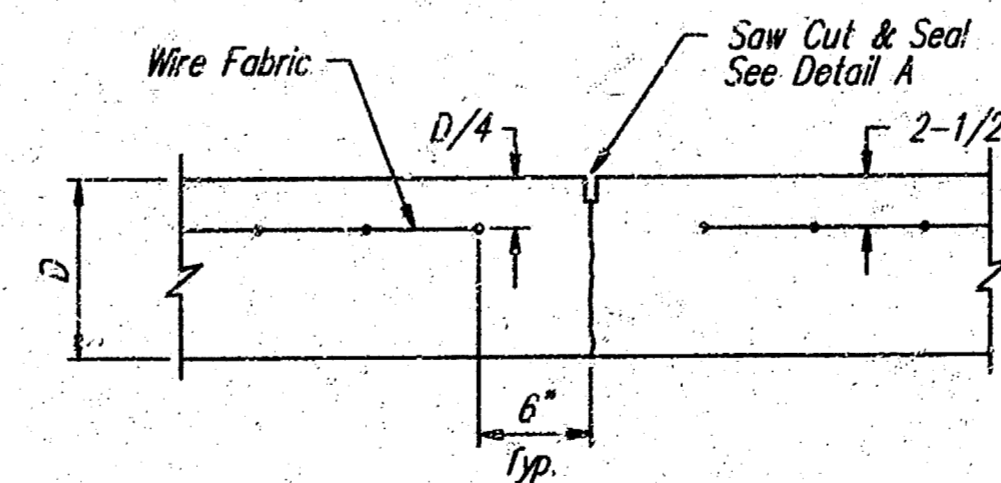
KEYWAY DETAIL



OPTIONAL CONTRACTION JOINT

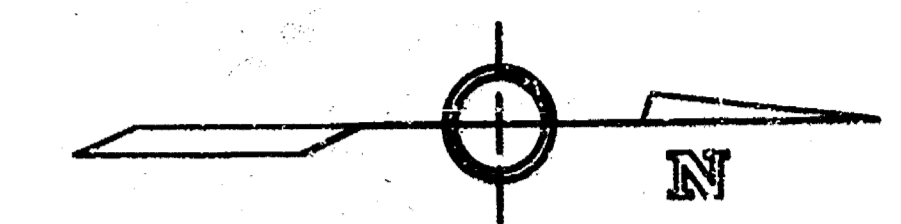


OPTIONAL LONGITUDINAL JOINT DETAIL (L.J.)



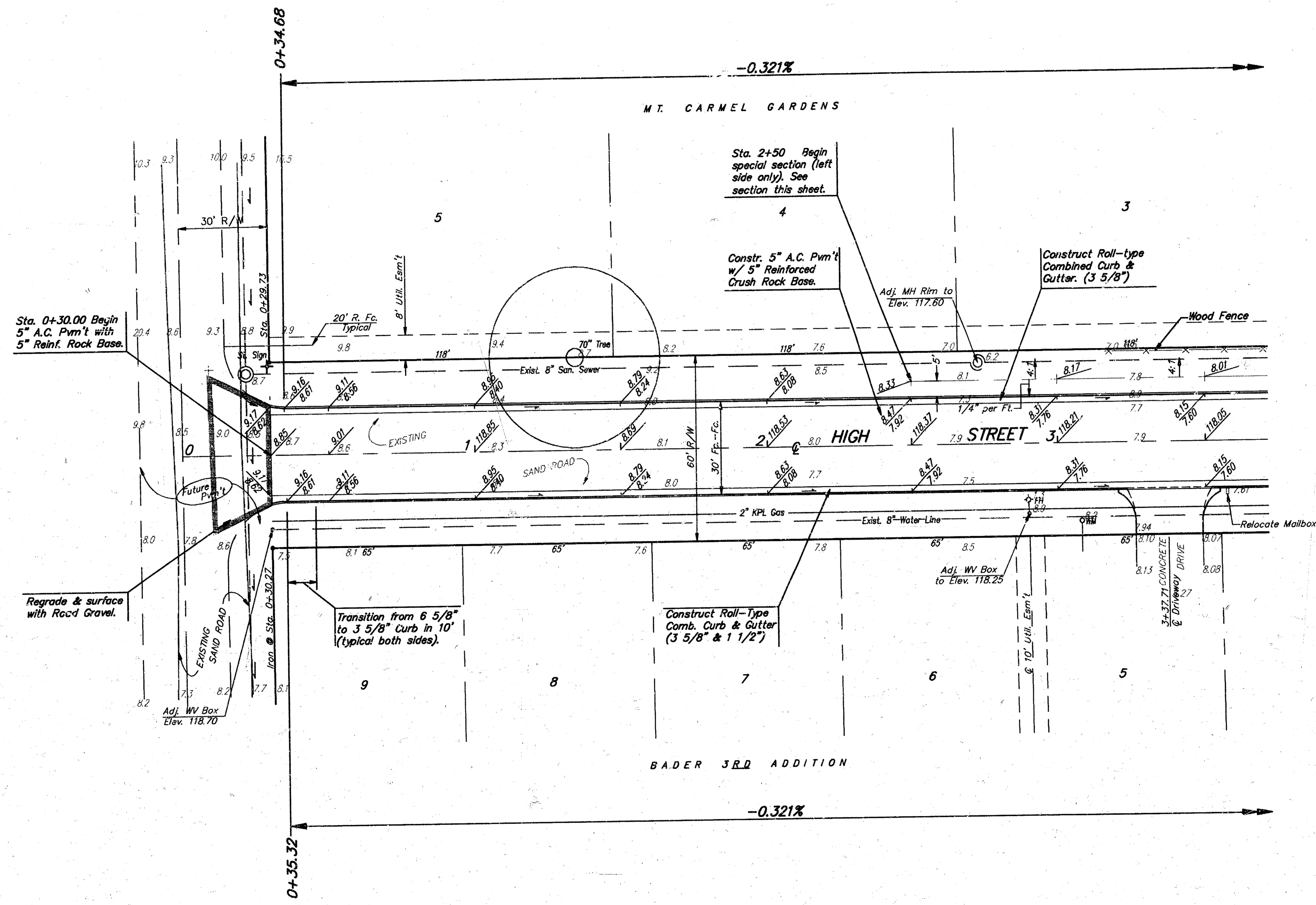
CONTRACTION JOINT DETAIL (C.J.)

VALLEY GUTTER & W.C.R. DETAILS				
BAUGHMAN COMPANY P. A. ENGINEERING & SURVEYING 316/261-7271 • 315 ELLIS • WICHITA, KANSAS 67211				REV.
PROJECT NUMBER				SHEET
472-76-245-B1739-000-000-001				4
DESIGN	DRAWN	APPROVED	DATE	SCALE
CMB/TCR	J. Long		June 4, 1992	No Scale
				OF
				9



SCALE:
1"=20'-0"

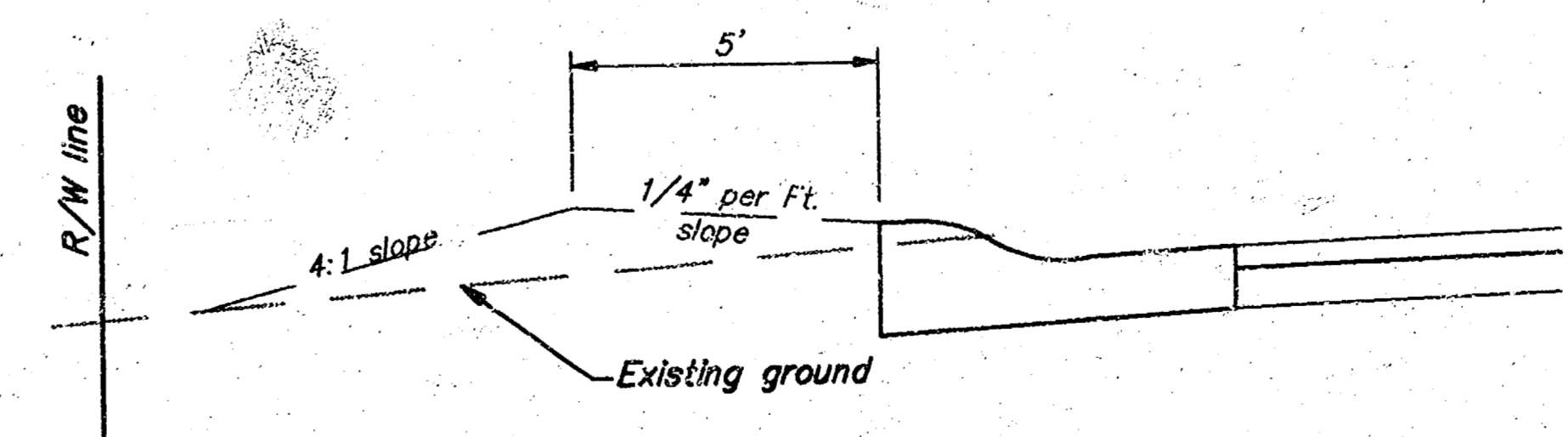
NOTE:
Roll-Type Curb and
Gutter to be Constructed
on this project.



Water Valve Box Table

Station	Location	Existing	Finished
0+30	24' Rt.	118.85	118.70
2+90	23' Rt.	118.87	118.25

BENCH MARK:
R.R. Spike South Face of Power Pole,
24' East of East Line High Street on
South Side 2nd St.; Elevation 118.35.



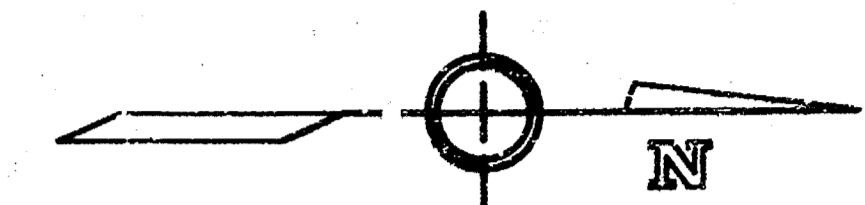
SPECIAL SECTION (L.T. SIDE ONLY)
Sta. 2+50 to 6+15

**BADER 3rd ADDITION
HIGH STREET**

BAUGHMAN COMPANY F. A.
ENGINEERING & SURVEYING
316/282-7271 • 315 ELLIS • WICHITA, KANSAS 67211

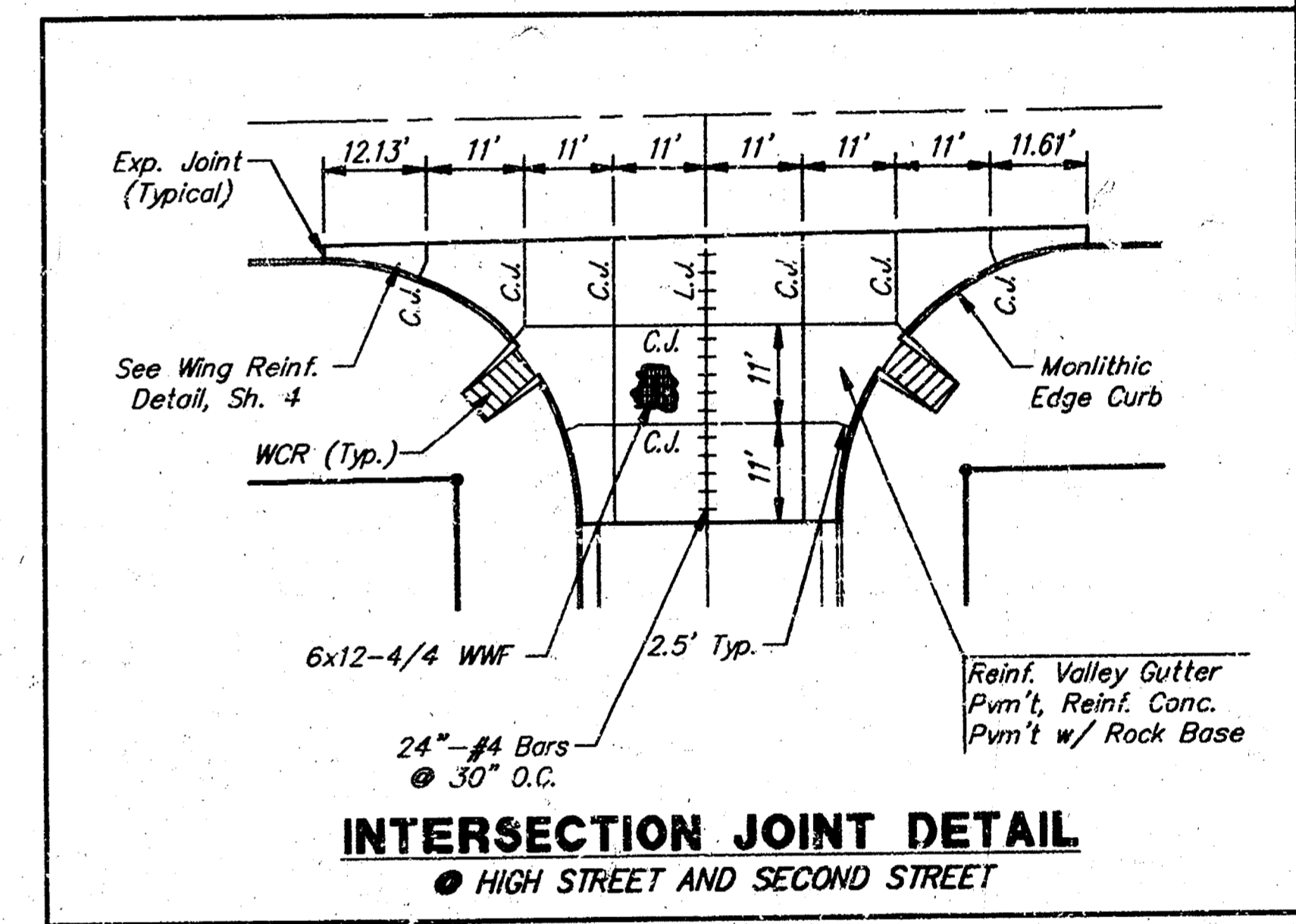
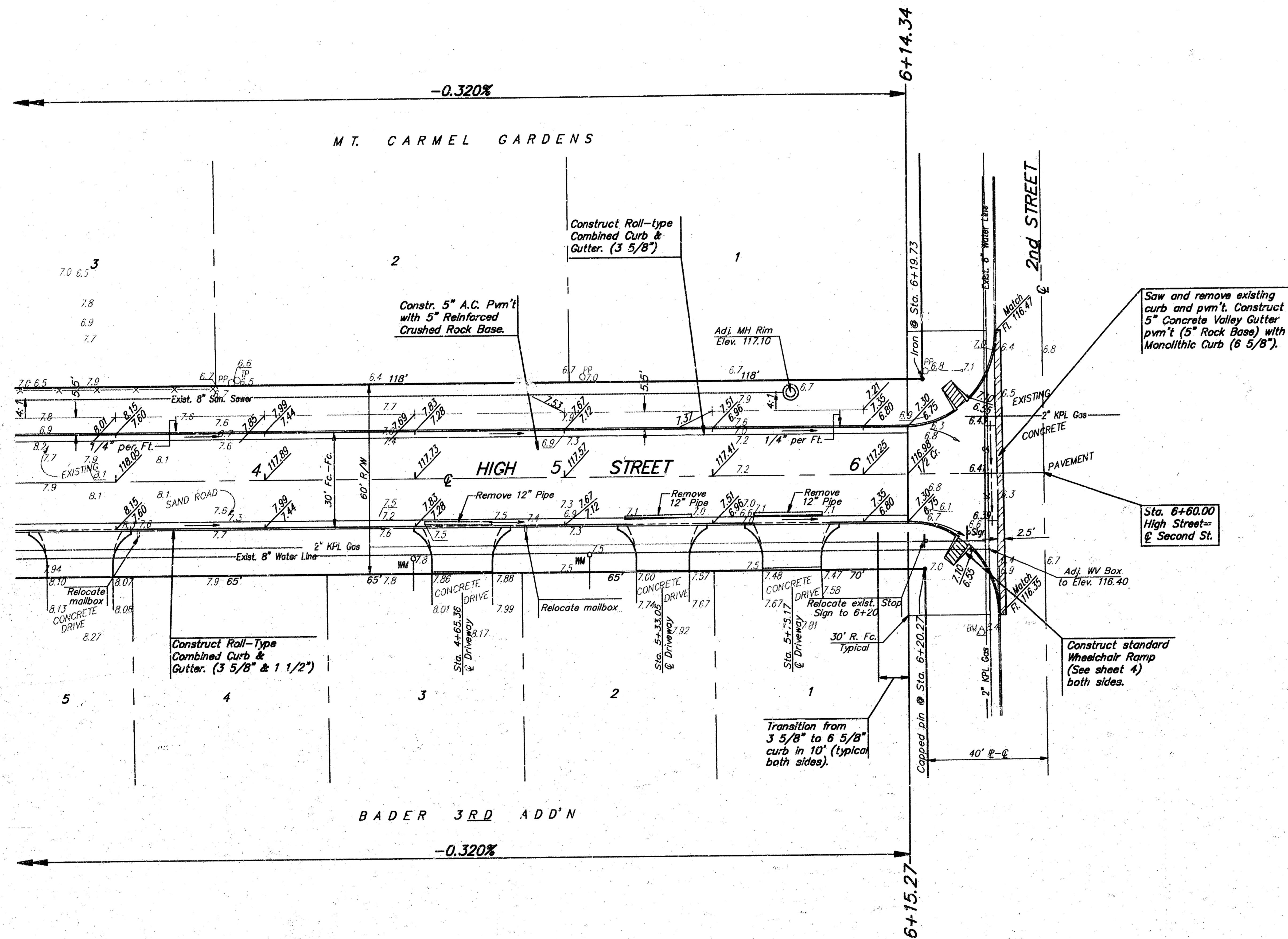
PROJECT NUMBER
472-75-243-81739-000-000-001

DESIGN T.C.R.	DRAWN J. Long	UTIL. CHECK'D T.C.R.	DATE 9-21-92	SCALE 1"=20'	SHEET 5 OF 9
------------------	------------------	-------------------------	-----------------	-----------------	-----------------------



SCALE:
1"=20'-0"

NOTE:
Roll-Type Curb & Gutter
to be constructed on
this project.



INTERSECTION JOINT DETAIL
● HIGH STREET AND SECOND STREET

Water Valve Box Table

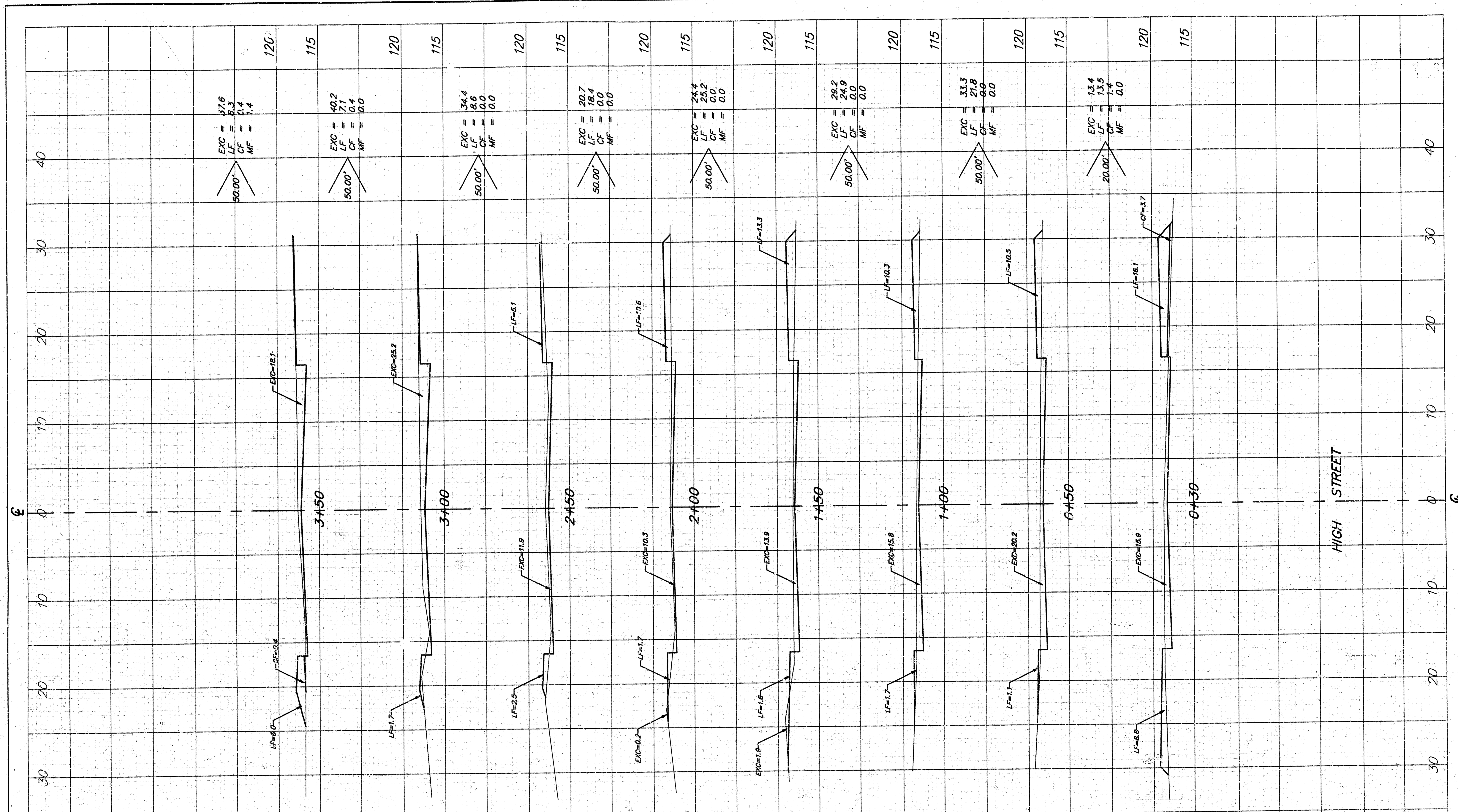
Station	Location	Existing	Finished
6+42	24' Rt.	116.88	116.40

BENCH MARK:
R.R. Spike South Face of Power Pole,
24' East of East Line High Street on
South Side 2nd St.; Elevation 118.35.

**BADER 3rd ADDITION
HIGH STREET**

BAUGHMAN COMPANY P. A.
ENGINEERING & SURVEYING
316/262-7271 • 315 ELLIS • WICHITA, KANSAS 67211

PROJECT NUMBER 472-76-245-81739-000-000-001		SHEET 6
DESIGN T.C.R.	DRAWN J. Long	DATE 9-21-92
UTIL. CHECK'D T.C.R.	SCALE 1"=20'	OF 9



EXC = 57.6
LF = 6.3
CF = 0.4
MF = 1.4

EXC = 40.2
LF = 7.1
CF = 0.4
MF = 0.0

EXC = 34.4
LF = 8.6
CF = 0.0
MF = 0.0

EXC = 20.7
LF = 18.4
CF = 0.0
MF = 0.0

EXC = 24.4
LF = 25.2
CF = 0.0
MF = 0.0

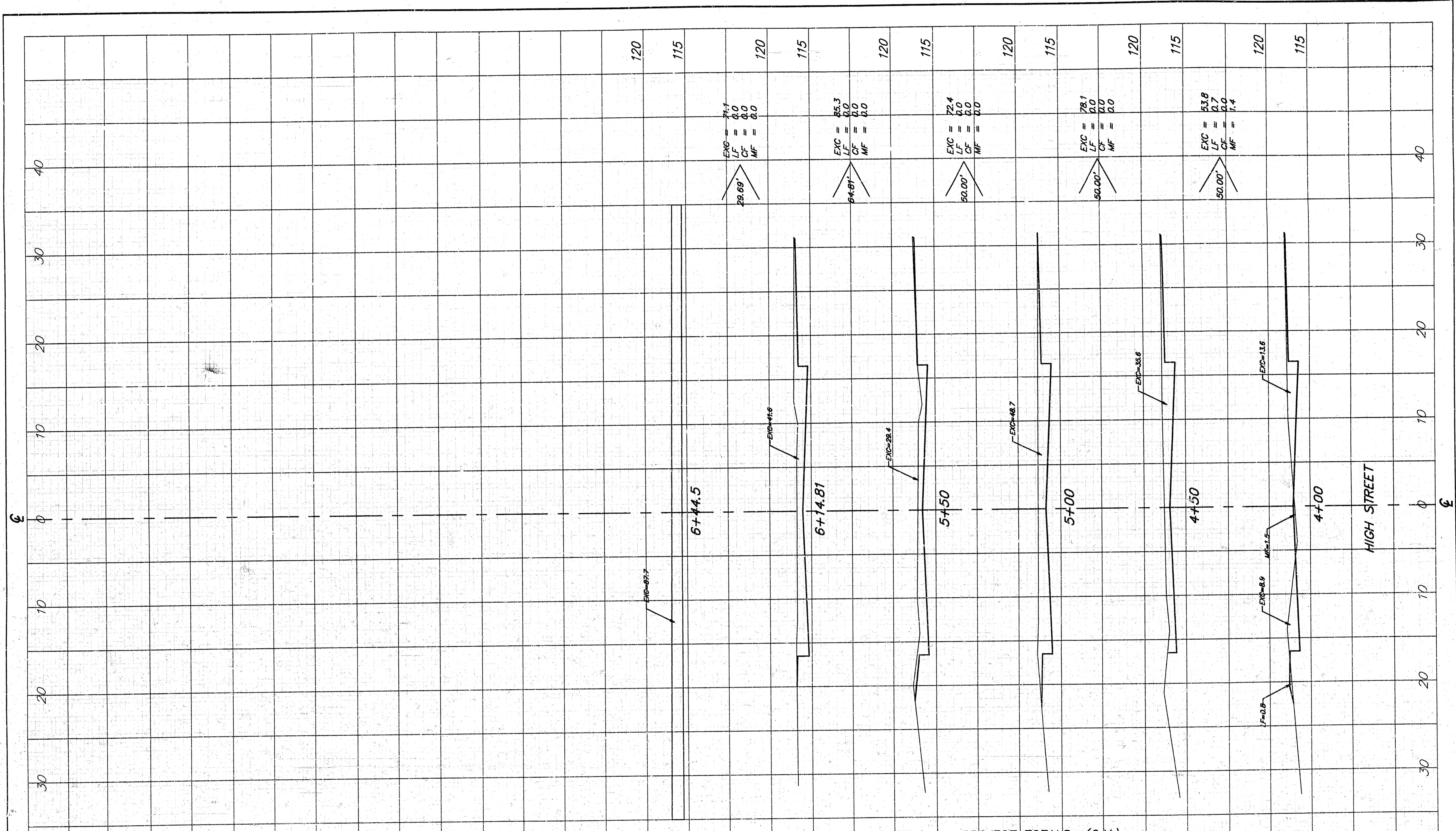
EXC = 29.2
LF = 24.9
CF = 0.0
MF = 0.0

EXC = 33.3
LF = 21.8
CF = 0.0
MF = 0.0

EXC = 13.4
LF = 13.5
CF = 1.4
MF = 0.0

SHEET TOTALS (CUBIC YARDS)
EXCAVATION = 233.1
LOOSE FILL = 125.8
COMPACTED FILL = 2.1
MANIPULATED FILL = 1.4

	BAUGHMAN COMPANY P. A. ENGINEERING & SURVEYING 310/282-7271 • 315 ELLIS • WICHITA, KANSAS 67211	REV.
	PROJECT NUMBER 472-76-246-81739-000-000-001	SHEET 7/9



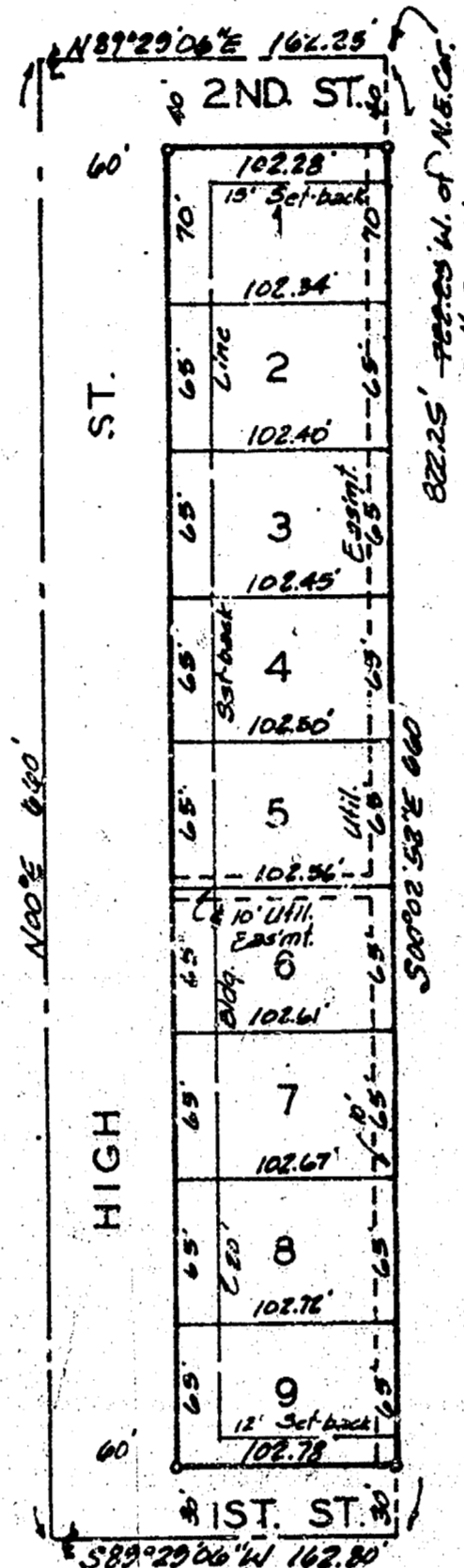
SHEET TOTALS (C.Y.)
 EXCAVATION = 360.6
 LOOSE FILL = 0.7
 MANIPULATED FILL = 1.4

PROJECT TOTALS (C.Y.)
 EXCAVATION = 593.7
 LOOSE FILL = 126.5
 COMPACTED FILL = 2.1
 MANIPULATED FILL = 2.8

B	BAUGHMAN COMPANY P. A.		REV.
	ENGINEERING & SURVEYING		
	316/262-7271 • 315 ELLIS • WICHITA, KANSAS 67211		
PROJECT NUMBER			SHEET
472-76-246-81733-000-001			8/9

BADER 3RD. ADDITION

WICHITA, KANSAS.



State of Kansas, Sedwick County, ss. We, Baughman Company, P.A., Surveyors in aforesaid County and State do hereby certify that we have surveyed and platted "BADER 3RD. ADDITION", Wichita, Kansas and that the accompanying plat is a true and correct exhibit of the property surveyed, described as the W/2 of a tract described as beginning 660 feet W. of the N.E. Corner of the SW/4 of Sec. 24, Twp. 27 S., R. 1-W of the 6th P.M., Sedwick County, Kansas; thence west 324.7 feet (324.5 feet measured); thence south 660 feet; thence east 325.5 feet (325.6 feet measured); thence north 660 feet to beginning.

9-28-87
Date Caullia F. Sullivan Surveyor
Caullia F. Sullivan

Know all men by these presents that we, the undersigned, have caused the land described in the surveyors certificate to be platted into lots and streets to be known as "BADER 3RD. ADDITION", Wichita, Kansas. The utility easements are hereby granted for the construction and maintenance of all public utilities. The streets are hereby dedicated to and for the use of the public.

Gerald K. Bader Fay M. Bader
Gerald K. Bader Fay M. Bader

This plat of "BADER 3RD. ADDITION", Wichita, Kansas, has been submitted to and approved by the Wichita-Sedwick County Metropolitan Area Planning Commission, Wichita, Kansas. Dated this 6th day of August, 1987.

Wichita-Sedwick County Metropolitan Area Planning Commission
John Terry Hargis Chairman
Marvin S. Reed Secretary

This plat approved and all dedications shown hereon approved by the Board of Commissioners of the City of Wichita, Kansas, this 16th day of 1987.

Robert S. Knight Mayor
Don E. Pea Deputy City Clerk

Entered on transfer record, this 18th day of December, 1987.
Alvin Wright County Clerk

State of Kansas, ss. The foregoing instrument acknowledged before me, this 2nd day of October, 1987, by Gerald K. Bader and Fay M. Bader, his wife.

My Appt. Exp. 12 May 1988
Mark A. Staley Notary Public

We, the undersigned, holders of a mortgage on the above described property do hereby consent to this plat of "BADER 3RD. ADDITION", Wichita, Kansas.

John H. Baker
Terry C. Baker
John H. Baker
Terry C. Baker

State of Kansas, ss. The foregoing instrument acknowledged before me, this 19th day of October, 1987, by John H. Baker and Terry C. Baker.

My Appt. Exp. 12 May 1988
Mark A. Staley Notary Public

State of Kansas, ss. This is to certify that this plat has been filed for record in the office of the Register of Deeds, this 17th day of December, 1987, at 10:40 o'clock P.M.; and is duly recorded.

Ed Risa Register of Deeds
Ed Risa Deputy

D 3-28

D 3-28