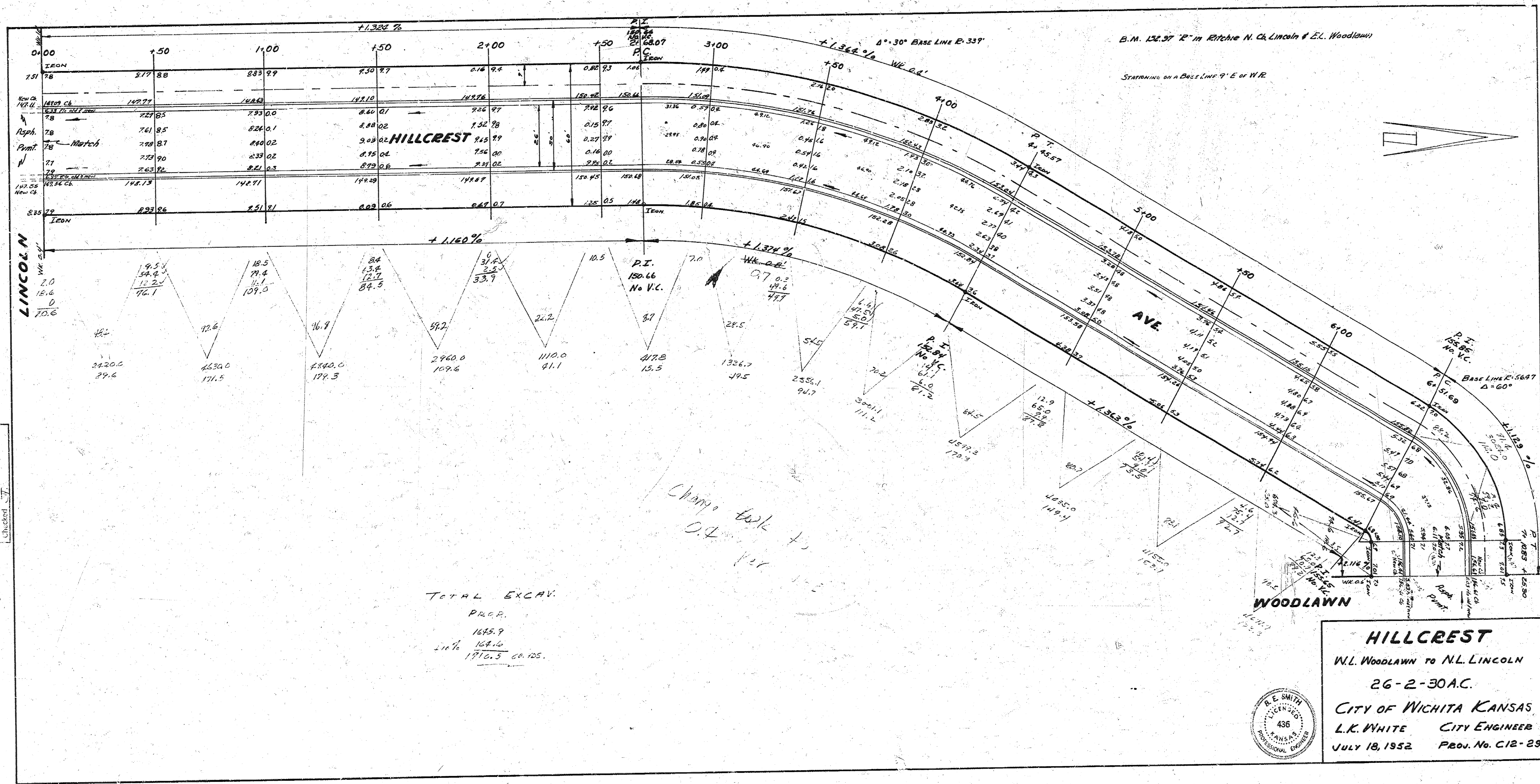


S-6



Survey Section BK S-6
Plan
L.K. WHITE
CITY ENGINEER

TOTAL EXCAV.
PROP.
1685.9
2 1/4"
1716.3 CA. 125.

Change back to
0.4 per 100

HILLCREST
W.L. WOODLAWN TO N.L. LINCOLN
26-2-30 A.C.
CITY OF WICHITA KANSAS
L.K. WHITE CITY ENGINEER
JULY 18, 1952 PROJ. NO. C12-29

