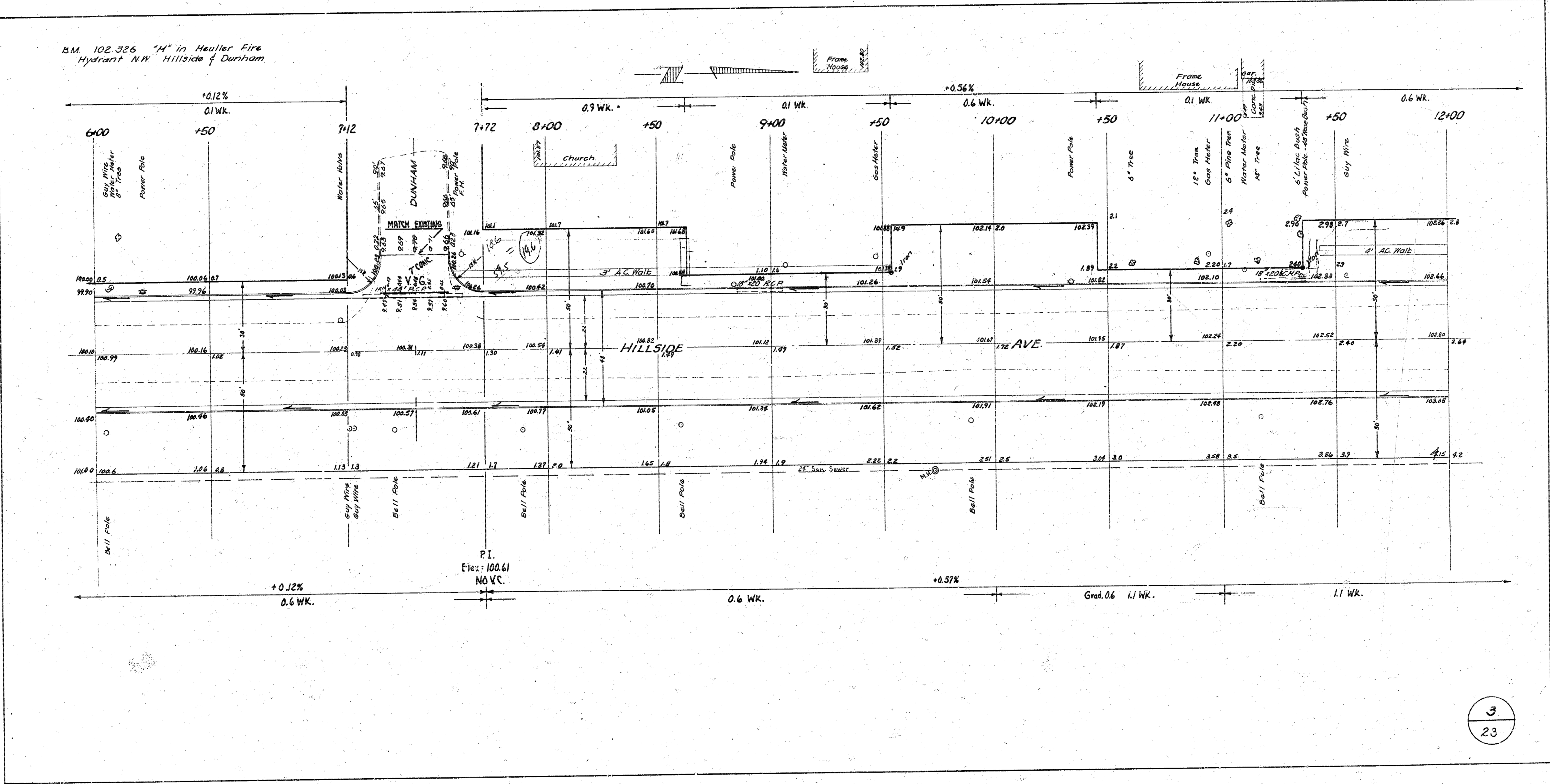
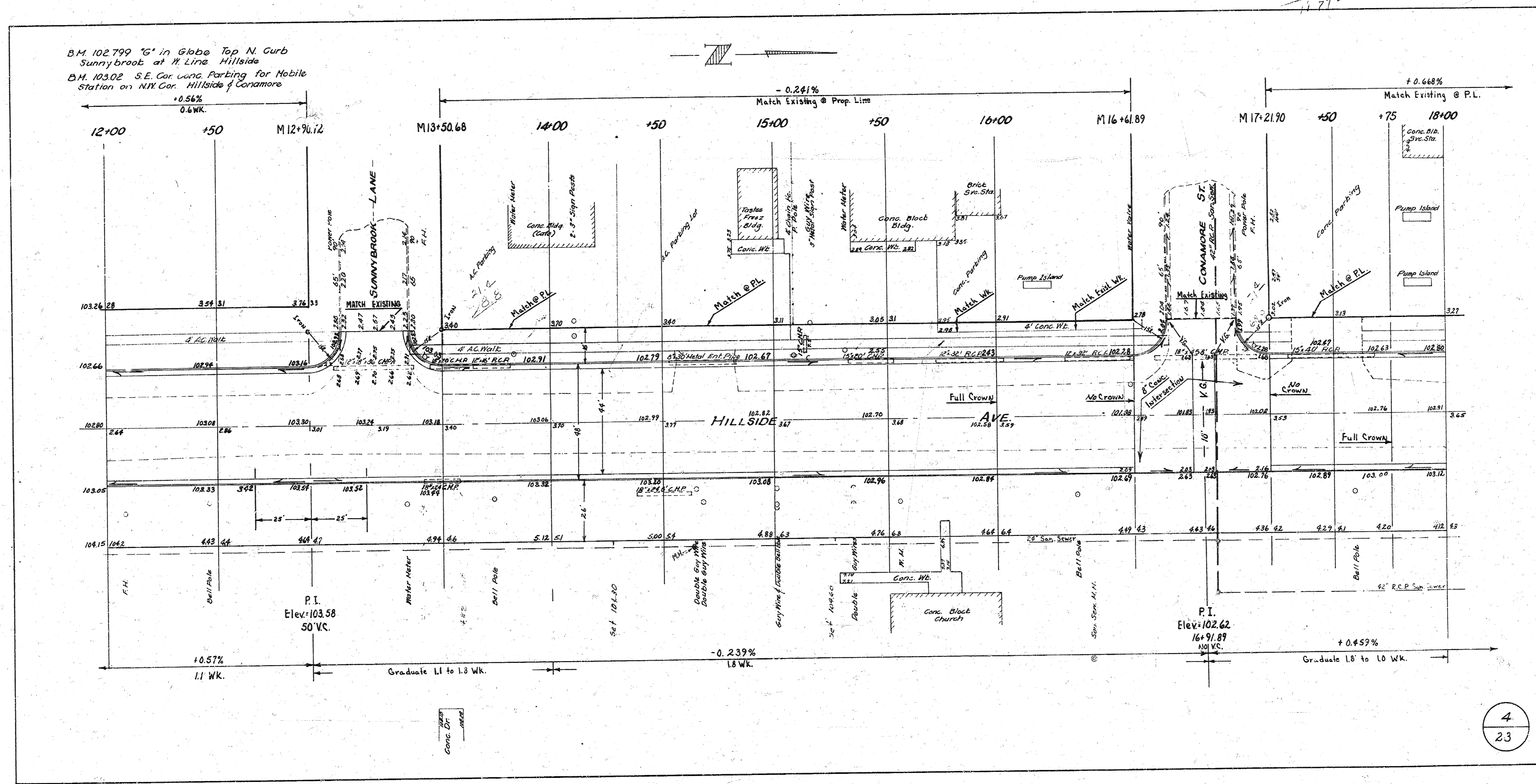


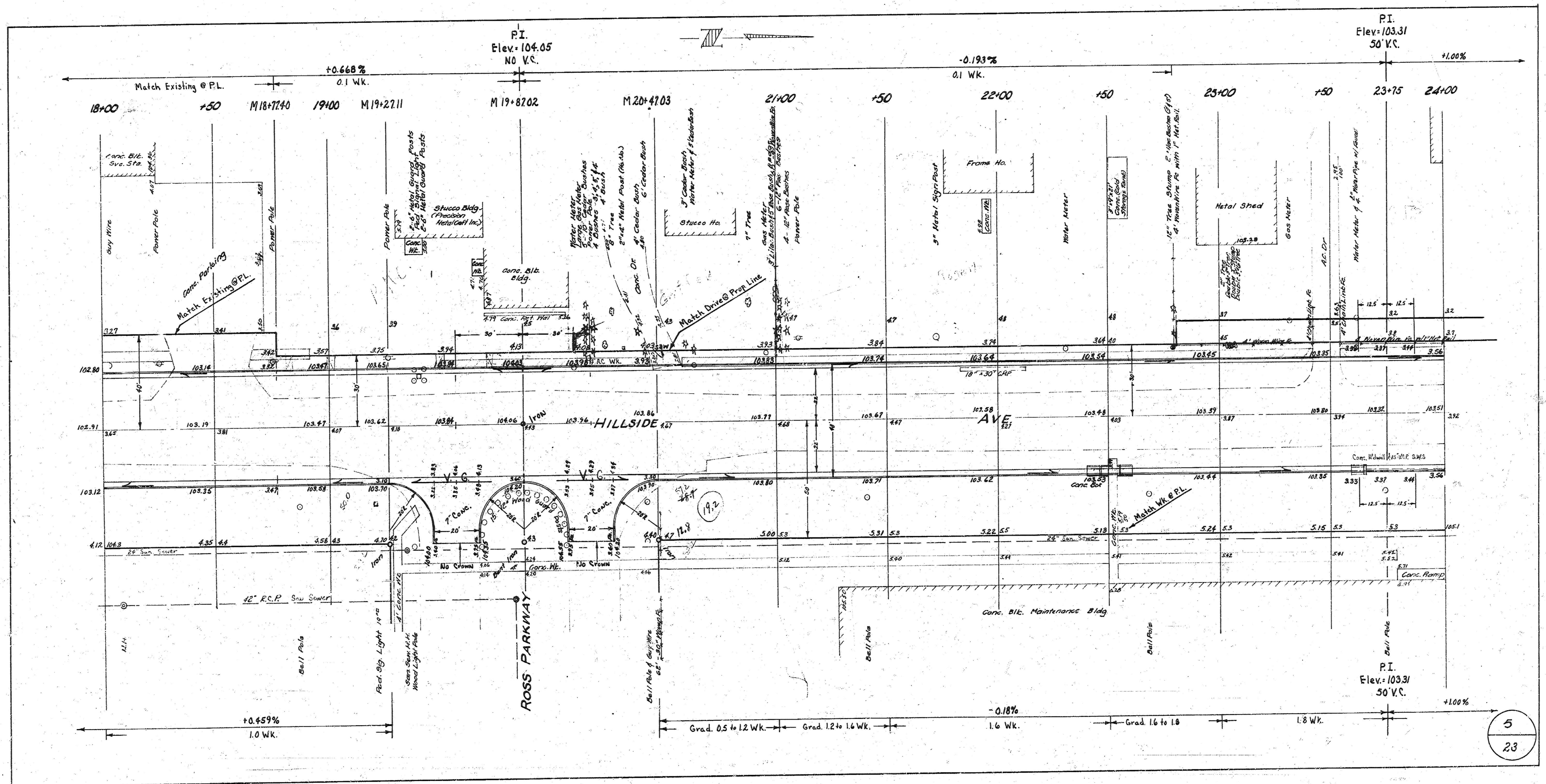
B.M. 102.326 "H" in Heuller Fire Hydrant NW Hillside & Dunham



B.M. 102.799 "G" in Globe Top N. Gurb
 Sunnybrook at M. Line Hillside
 B.M. 103.02 S.E. Cor. Conc. Parking for Mobile
 Station on N.W. Cor. Hillside of Conamore



1721
 155
 177



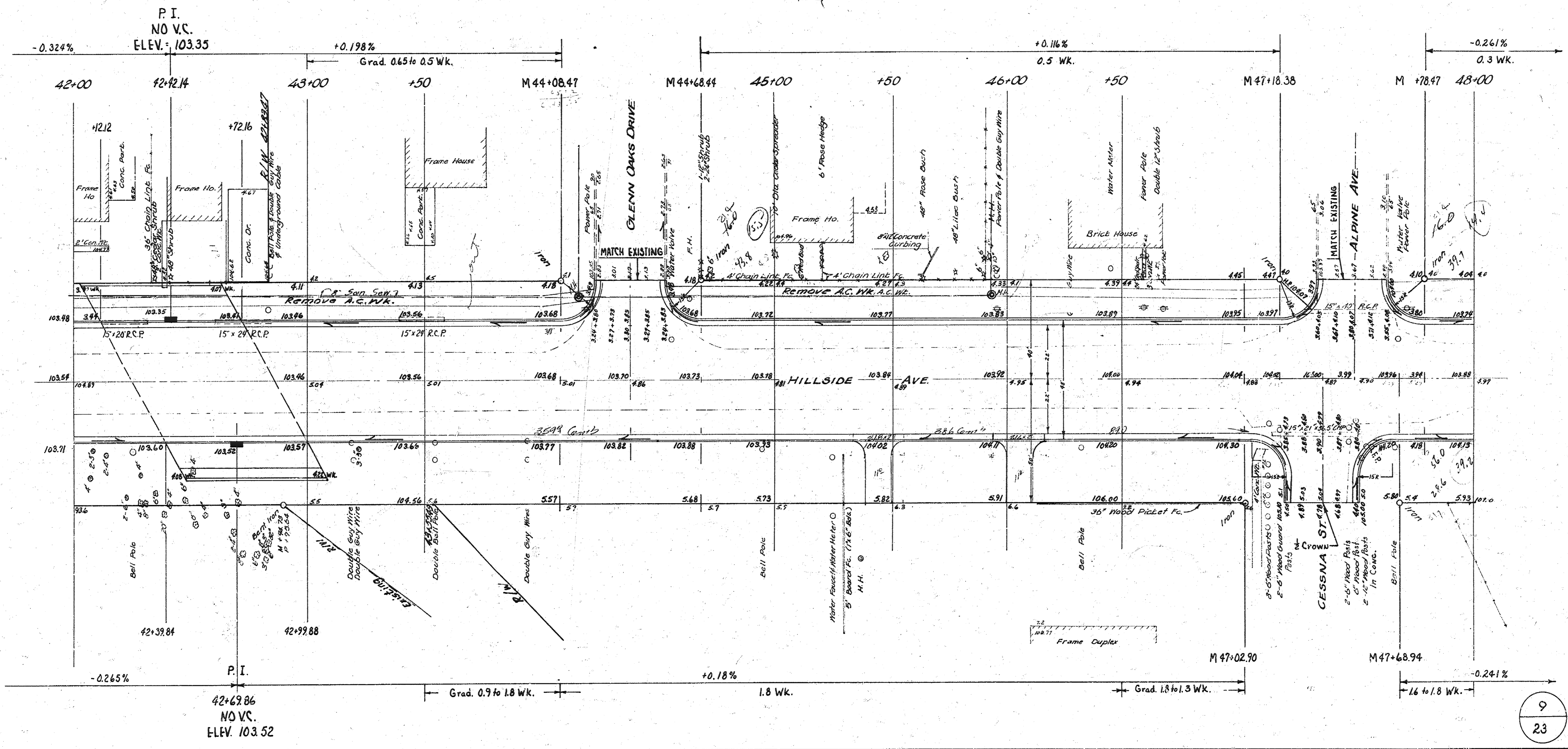
P.I.
 Elev. 104.05
 NO V.C.

P.I.
 Elev. 103.31
 50' V.C.

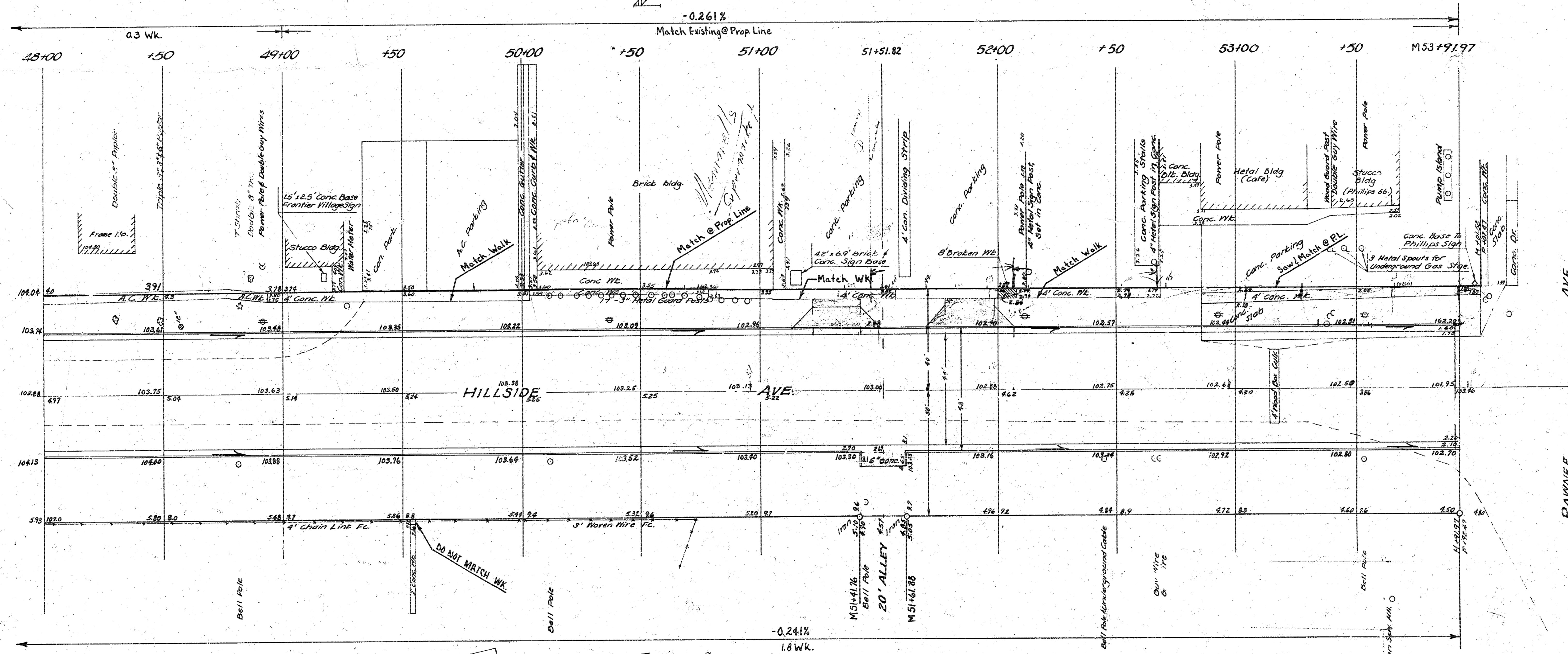
P.I.
 Elev. 103.31
 50' V.C.

5
 23

B.M. 105.96 "M" in Weller Top Fire Hydrant N.W. Cor. Hillside & Glenn Oaks Drive
 B.M. 103.92 "X" cut Top South Curb Alpine @ N.L. Hillside



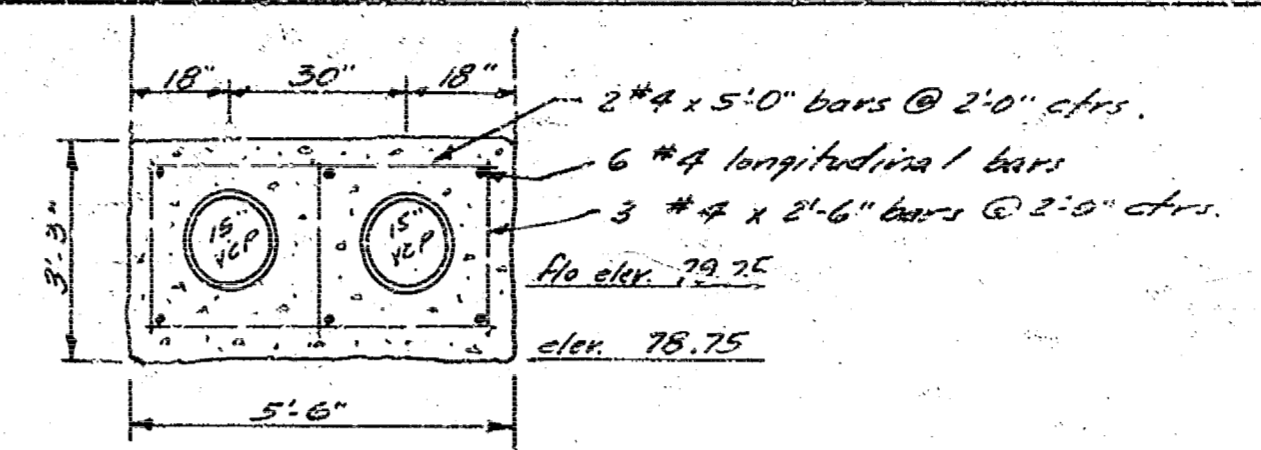
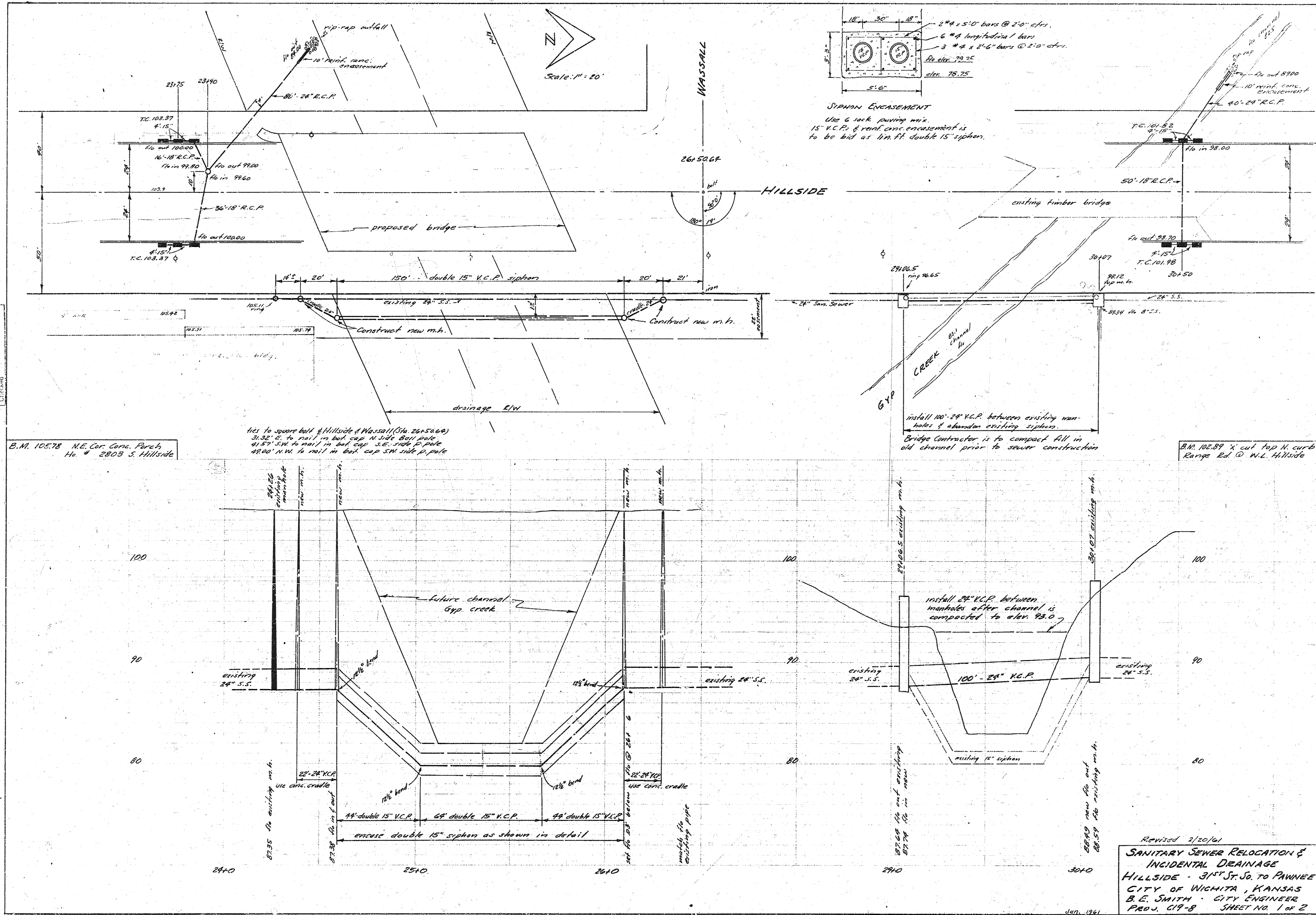
S.U. 103.478 City Std. N.E. Cor. Hillside & Pawnee, 2.5' E. Guy Pole & 2.4' N. of "X" on Curb



NOTE:
 FIELD ENGINEER TO DETERMINE
 AMOUNT OF ASPH REMOVAL NECESSARY
 FOR HOOK-UP @ PAWNEE.
 CHECK WITH OFFICE BEFORE REMOVAL.

Ties to Iron @ Hillside & Pawnee
 54.57 SW 1" Cut in N.E. Cor. Conc. Wt. West
 76.13 NW 1" Nail in Dot Cap 3/4" Side P. Pole
 72.76 N.E. to "X" Cut in S.W. Cor. Conc. Wt. (in drive)

10
 28



SIPHON ENCLOSURE
 Use 6 inch paving mix.
 15" V.C.P. & manhole enclosure is to be bid as lin. ft. double 15" siphon.

10/25/61
 B.E. SMITH
 CIVIL ENGINEER
 WICHITA, KANSAS

B.M. 105.78 N.E. Cor. Conc. Pave. Ho. # 2803 S. Hillside

165' to square post @ Hillside & Warsaw (Sta. 26+50.00)
 30.32' S. to nail in but cap N side 8" dia.
 41.57' SW to nail in but cap S.E. side 6" dia.
 48.00' NW to nail in but cap SW side 6" dia.

install 100'-24" V.C.P. between existing manholes & abandon existing siphon.
 Bridge contractor is to compact fill in old channel prior to sewer construction

B.M. 105.89 1/2 cut top N curb Range Ed @ W.L. Hillside

Revised 2/20/61
SANITARY SEWER RELOCATION & INCIDENTAL DRAINAGE
 HILLSIDE - 31ST ST. SO. TO PAWNEE
 CITY OF WICHITA, KANSAS
 B. E. SMITH - CITY ENGINEER
 PROJ. C19-8 SHEET NO. 1 OF 2

