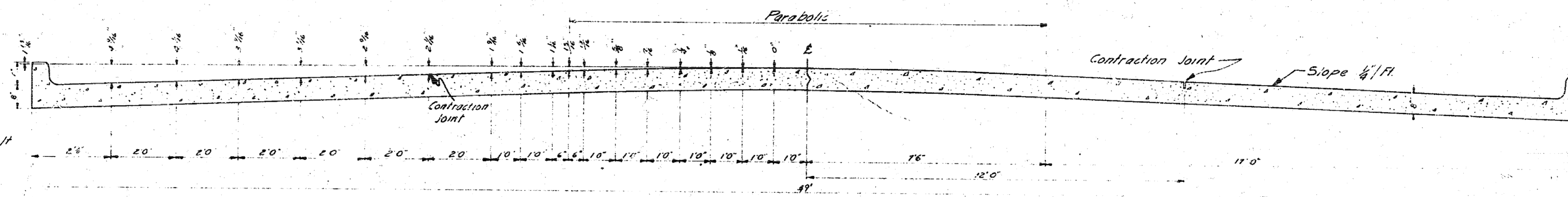
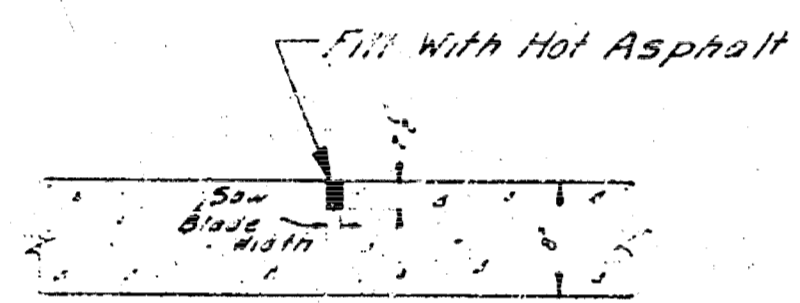
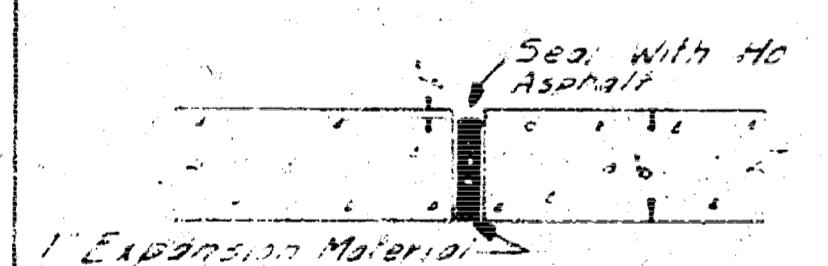


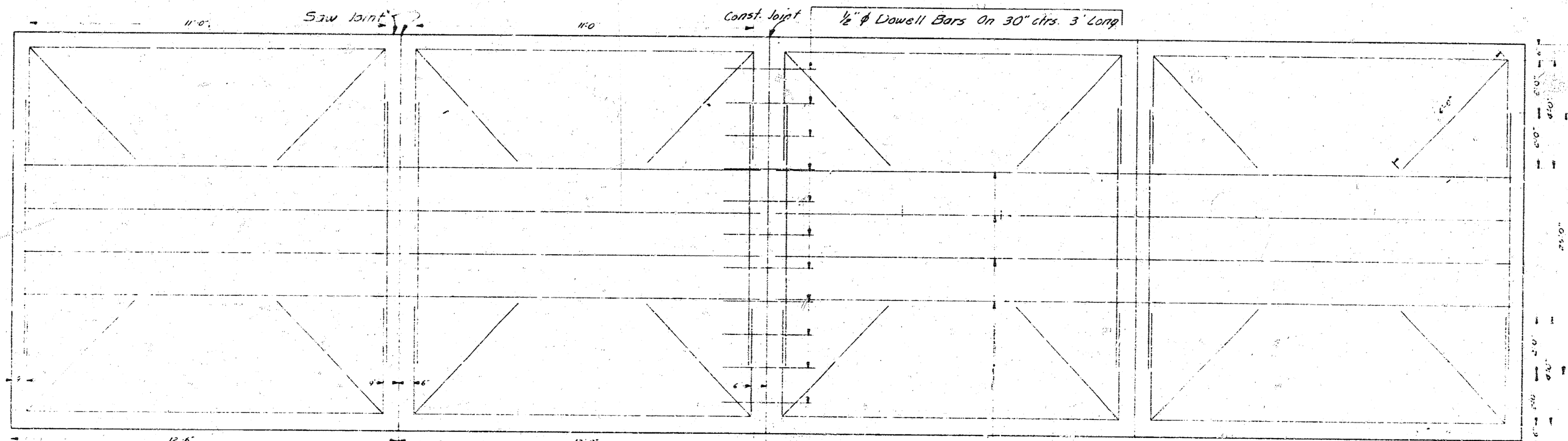
HILLSIDE AVENUE
N.L. DOUGLAS TO 200' SOUTH S.L. CENTRAL AVE.
PROJECT No. C15-52



TYPICAL SECTION
No Scale

Fill With Hot Asphalt

CONTRACTION JOINT
No Scale
 To Be Used At 30' Intervals
 Except Where An Expansion
 Joint is Used

Seal With Hot Asphalt

EXPANSION JOINT
No Scale
 To Be Used At 20' Intervals

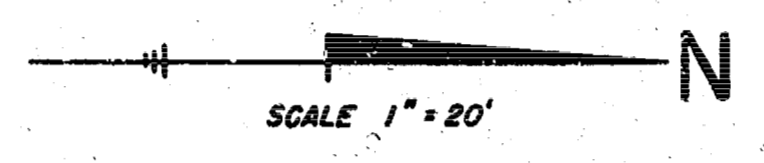


STEEL PATTERN
No Scale
 Use $\frac{3}{8}$ " Bars Unless Otherwise Specified

4 - 3/4" Bars Equally Spaced 24'-0" Long

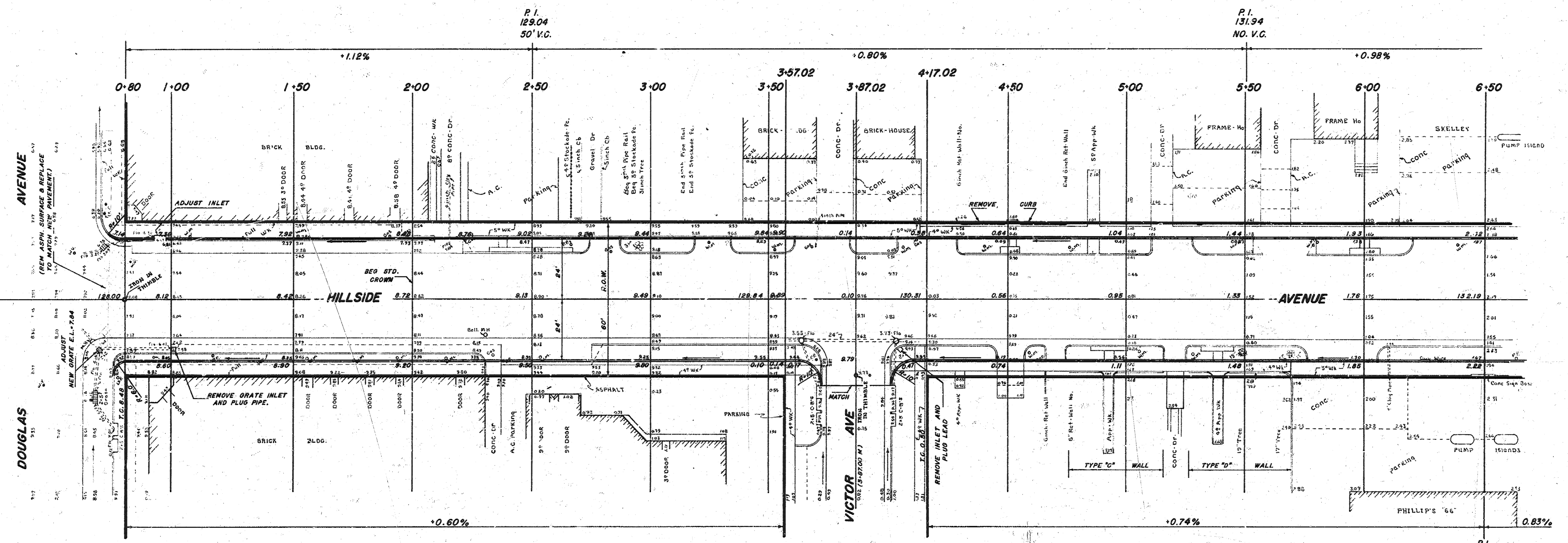


B.M.=127.41 S.E. COR METAL BASE TO BLDG COR POST, ON N.W. COR HILLSIDE & DOUGLAS
 B.M.=133.47 N.E. COR CONG BASE TO SKELLEY SIGN, ON S.W. COR HILLSIDE @ 1ST STREET
 B.M.=135.23 "X" CUT TOP 6" CONG RET WALL ON S.E. COR HILLSIDE @ END 6.5' S. OF BK WK E. ON END
 B.M.=139.23 R.R. SPIKE E. SIDE LARGE HEDGE TREE ON N.W. COR HILLSIDE @ 3RD STREET
 B.M.=144.02 S.E. COR CONG BASE TO CONOCO SIGN ON S.W. COR HILLSIDE @ CENTRAL



BASE LINES ARE 27.0' E. & W. OF C

CONSTRUCTION SCHEDULE: Intersections at 1st and 2nd St. are to have one half paved and opened to East and West traffic prior to removing other one half.



NOTE: TO FIELD ENGINEER: USE IRONS AT 0+80, 7+44, 14+07.13, 21+50.88, AND 27+34.77 FOR ALIGNMENT.

NOTE TO CONTRACTOR
 THE ITEM TIE DISPOSAL - PROVIDES FOR THE DISPOSING OF TIES ONLY (LUMP SUM).
 REMOVAL OF TIES TO BE SUBSIDIARY TO THE ITEM PAVEMENT REMOVED.

BORROW MATERIAL WILL BE PAID AS CUBIC YARDS EXCAVATION. DETERMINED BY CROSS-SECTIONS AT BORROW MATERIAL SITE, WHICH WILL BE LOCATED BY CONTRACTOR. OVERHAUL WILL BE PAID FROM SITE TO PROJECT.



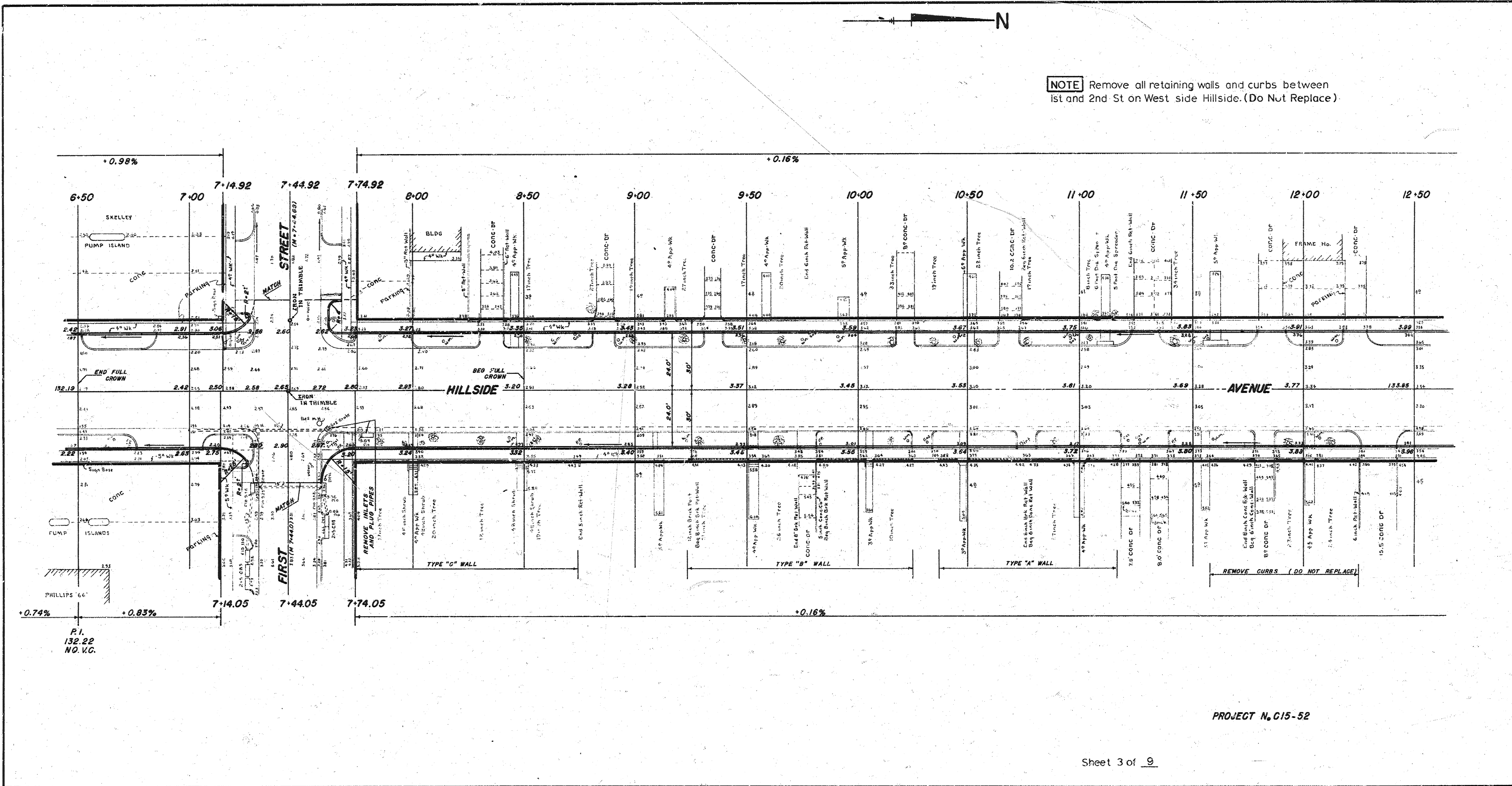
Comp	Fill
1,250.1	cu yds
+10% 128.0	" "
Total	1,408.1 cu yds

Excavation	Borrow
877.3	cu yds
+10% 87.7	" "
965.0	cu yds
+600.0	" "
Total	1,565.0 cu yds

HILLSIDE AVENUE
 FROM N.L. DOUGLAS AVENUE TO 200' SOUTH OF S.L. CENTRAL AVENUE.
48'-8" CONG & INT. CURB
 B.E. SMITH CITY ENGINEER
 CITY OF WICHITA, KANSAS
 DATE: SEPT. 1945 PROJECT No. C15-52

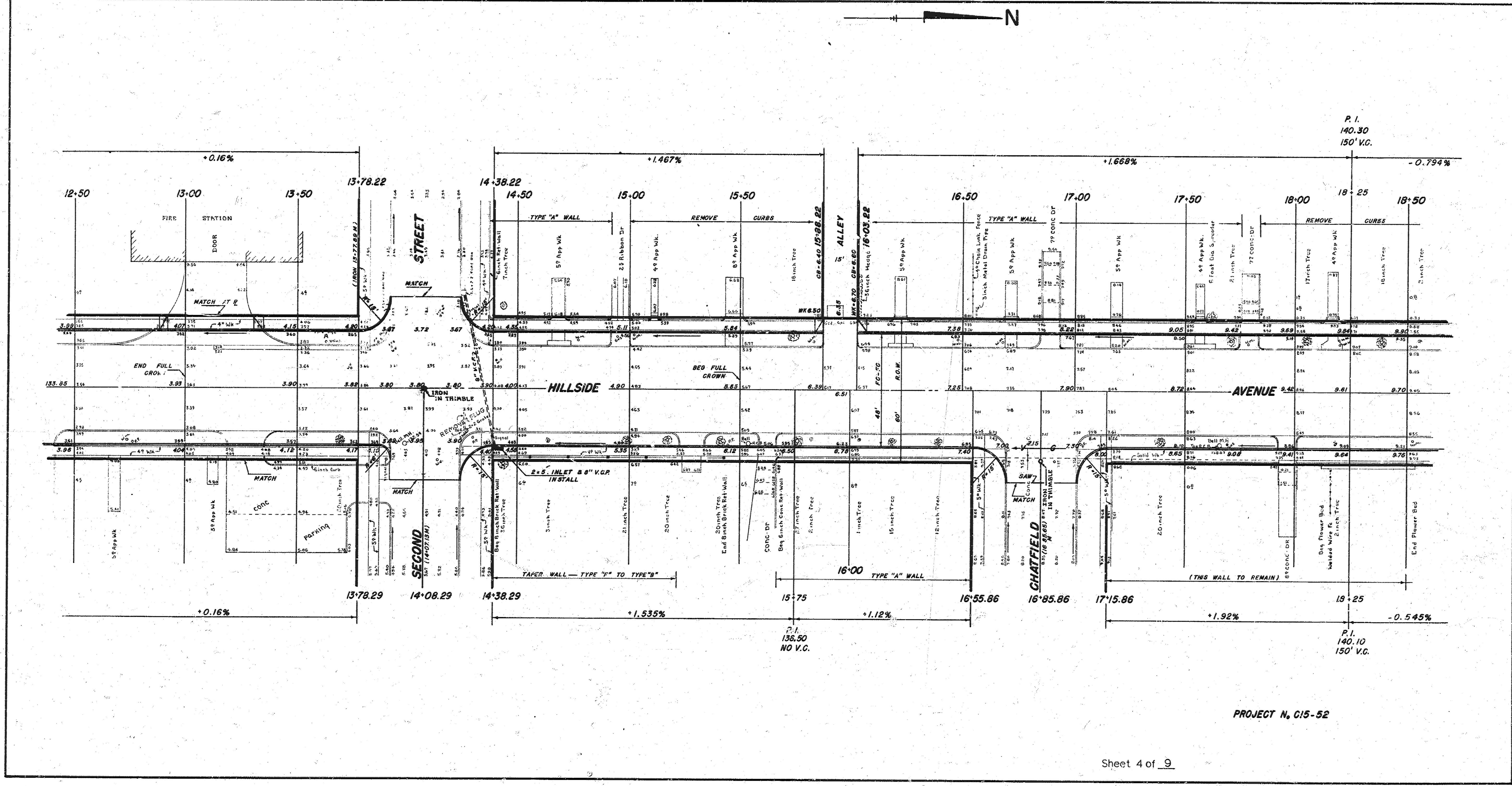


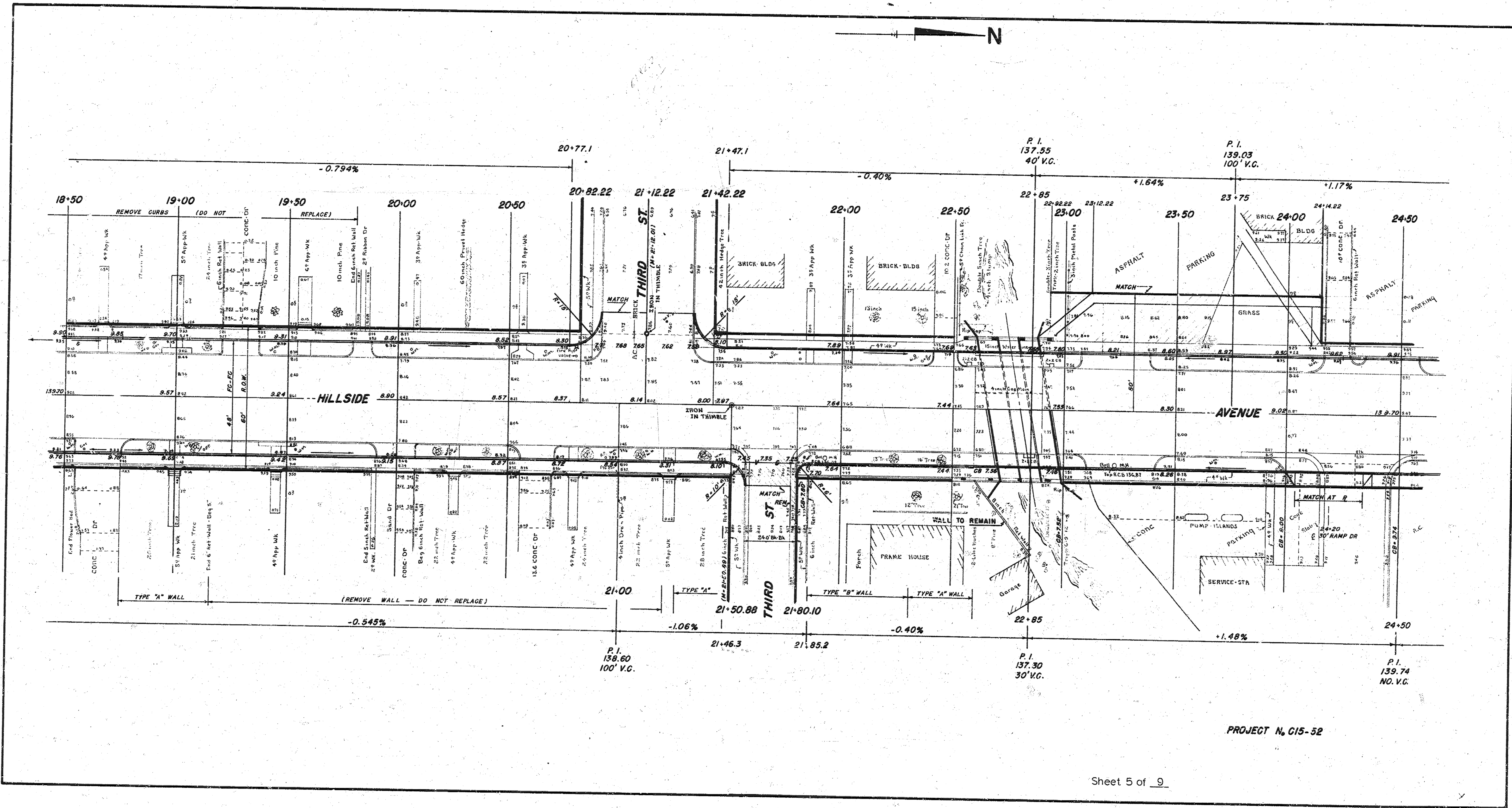
NOTE Remove all retaining walls and curbs between 1st and 2nd St on West side Hillside. (Do Not Replace)



Sheet #121
Sheet #132
Sheet #22

PROJECT No. C15-52





PROJECT No. C15-32

NOTE: ALIGNMENT CHANGE BETWEEN
25+00 - 25+43.2 WEST SIDE. &
25+00 - 26+04.7 EAST SIDE.

