

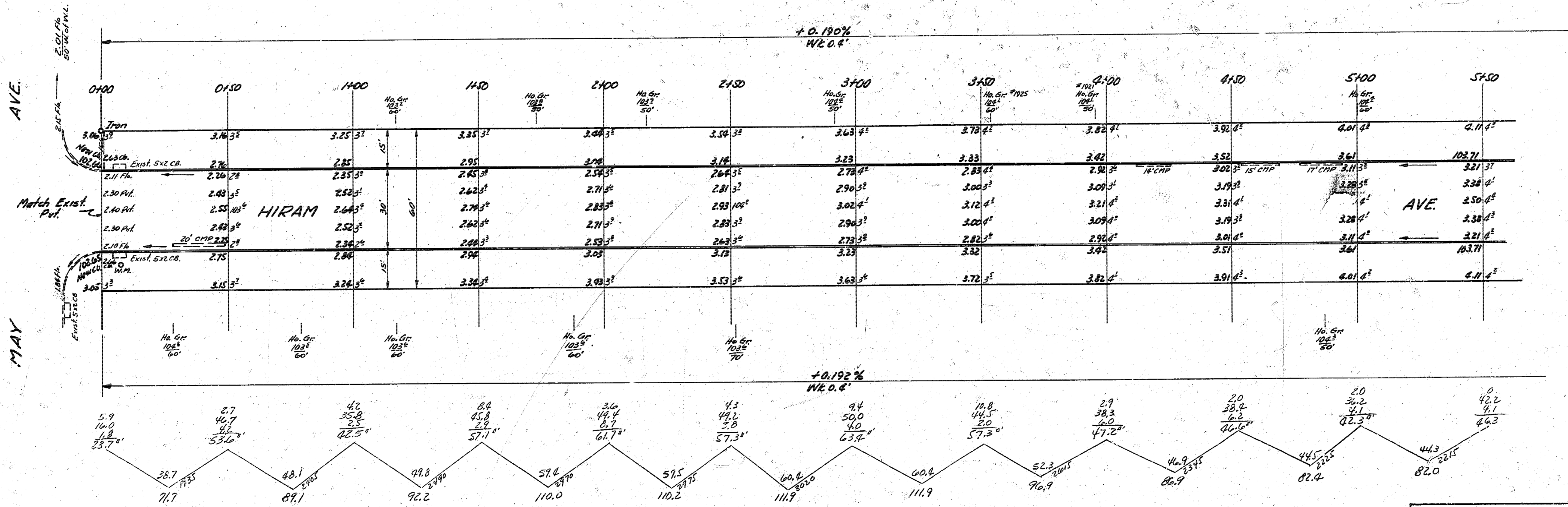
B.M. 108.112 Standard S.E. Cor. Glenn & May  
 B.M. 102.64 "6" in Globe W. Co. Hiram, N.L. May  
 B.M. 108.10 Double Spike, E.S. Tol. Pole, S.W. Cor. Hiram & Orient Blvd.

Base Line - E Hiram

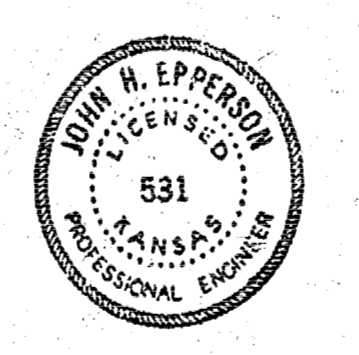


Grand Total Excav		Excav	
Prop.	CITY	Prop.	CITY
104.57	163.2	104.57	163.2
930.1	92.0	930.1	92.0
674.9	260.2	674.9	260.2
8630.2	26.0	8630.2	26.0
233.9	26.0	233.9	26.0
Total 2715.2 cu. yds.	Total 286.2 cu. yds.	Total 2715.2 cu. yds.	Total 286.2 cu. yds.

NOTE:  
 Field Eng. is to re-X-Section  
 prior to Excavation.



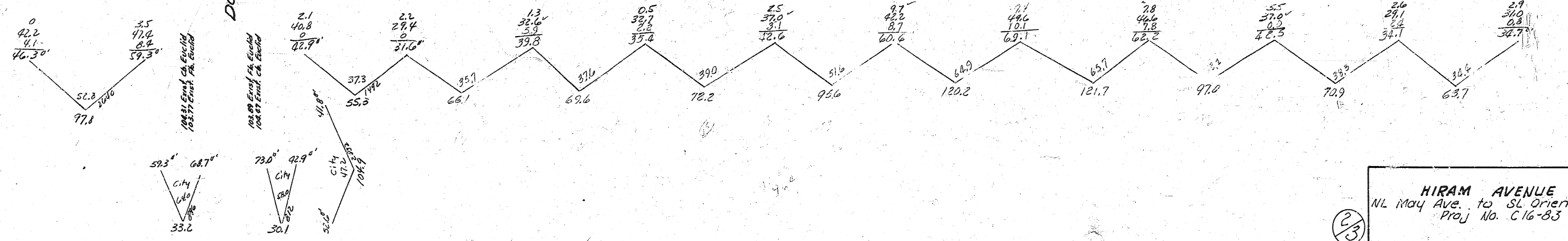
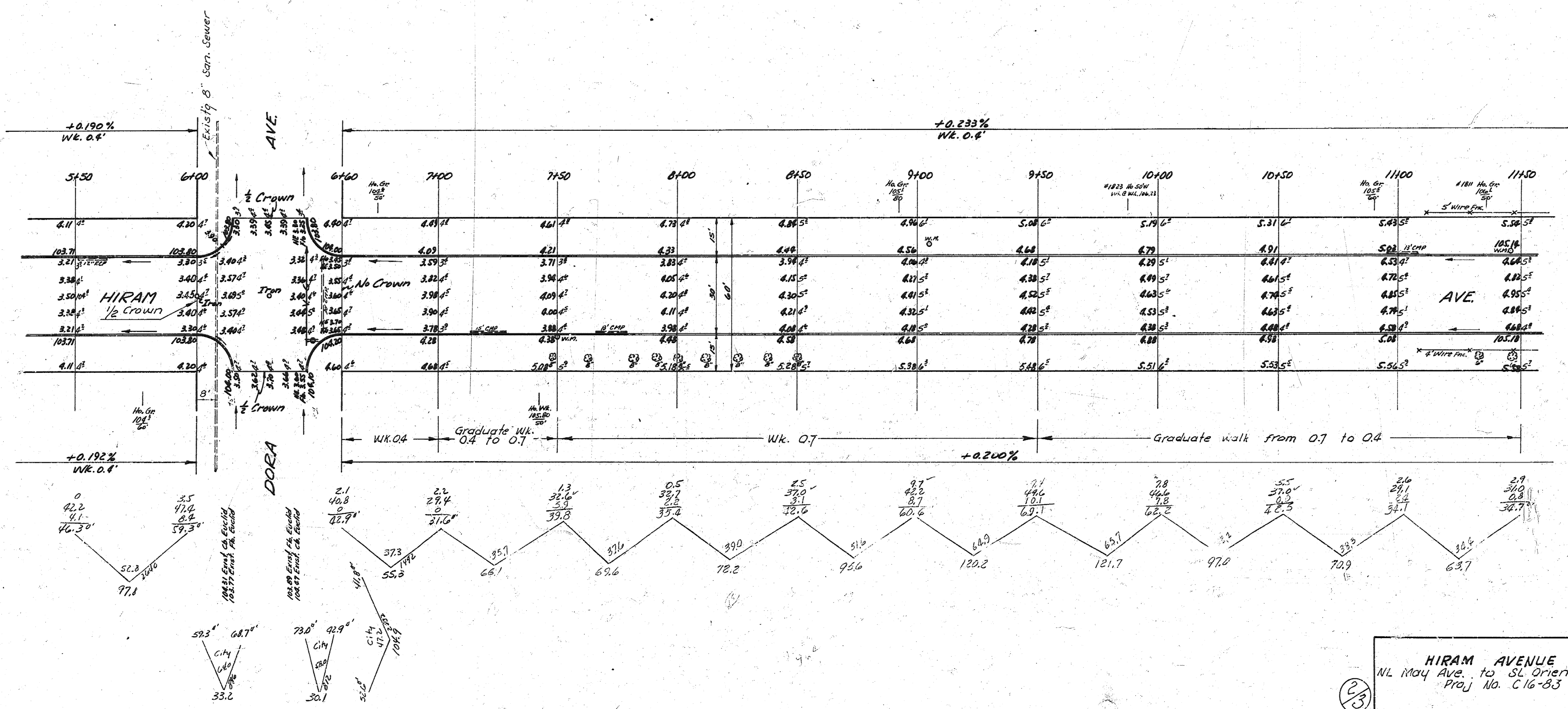
Survey CNA  
 H. J. C. W. W.  
 E. J. C. W. W.  
 Sheet 57



HIRAM AVE.  
 N.L. MAY TO S.L. ORIENT  
 30' CONC. & CB.  
 CITY OF WICHITA, KANSAS  
 B.E. SMITH CITY ENGINEER  
 JULY 1960 Proj. No. C16-83

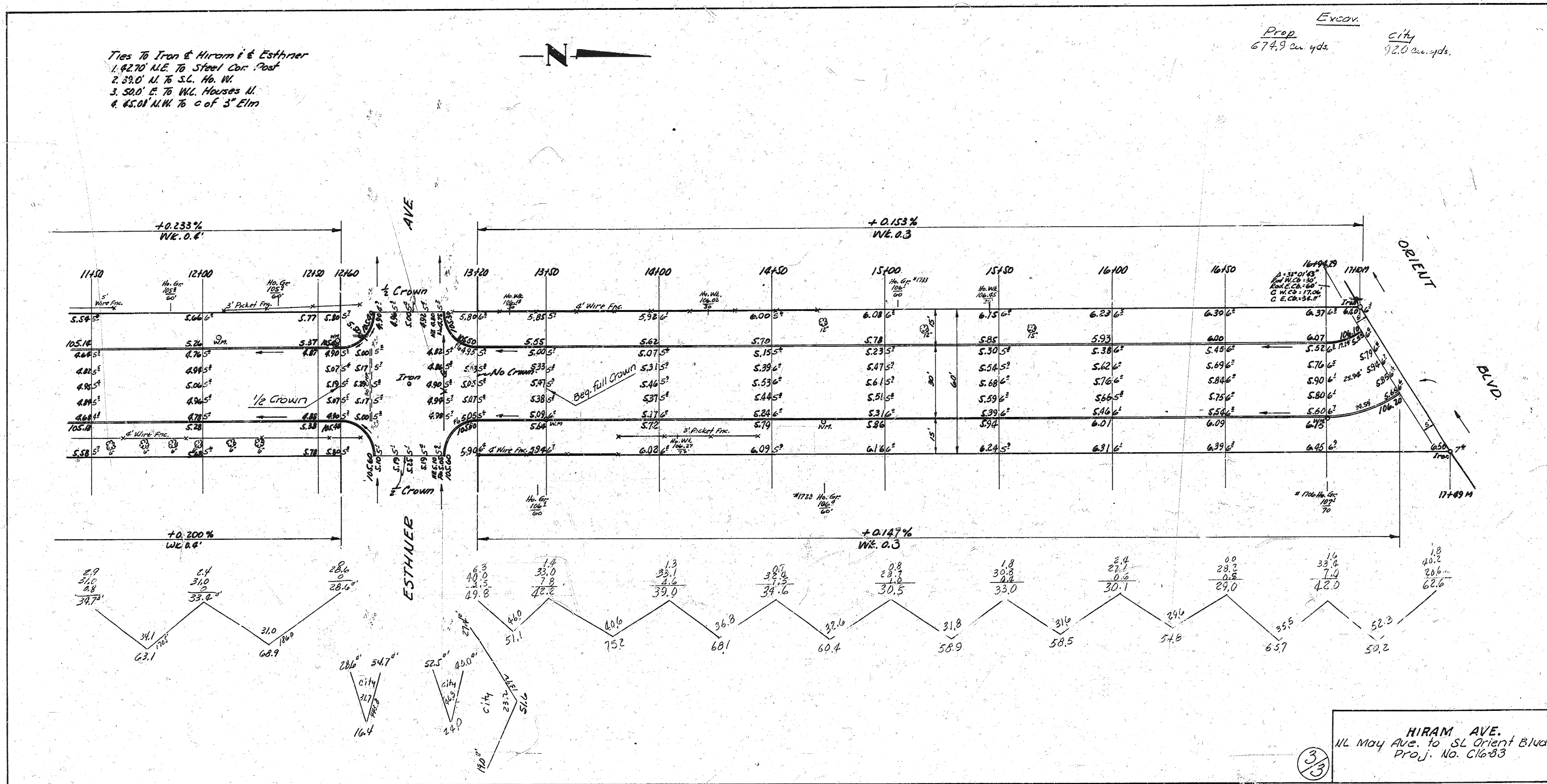
Ties To Iron & Hiram f S.C. Dora  
 1. 400' E.S.E. to NW Cor. Ho.  
 2. 51.15' N.E. to face Tol. Pole.  
 3. 30.0' N. to Iron

Prop 730.1 cu. yds. City 168.2 cu. yds.  
 Excav



Ties to Iron & Hiram & Esthler  
 1. 42.70' N.E. to Steel Cor. Post  
 2. 39.0' N. to S.L. Ho. W.  
 3. 50.0' E. to W.L. Houses N.  
 4. 45.01' N.W. to c of 3" Elm

Prop. 674.9 ac. yds. City 920 ac. yds.



HIRAM AVE.  
 N.L. May Ave. to S.L. Orient Blvd.  
 Proj. No. C16-83

39