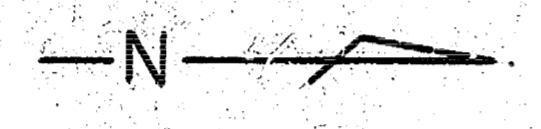


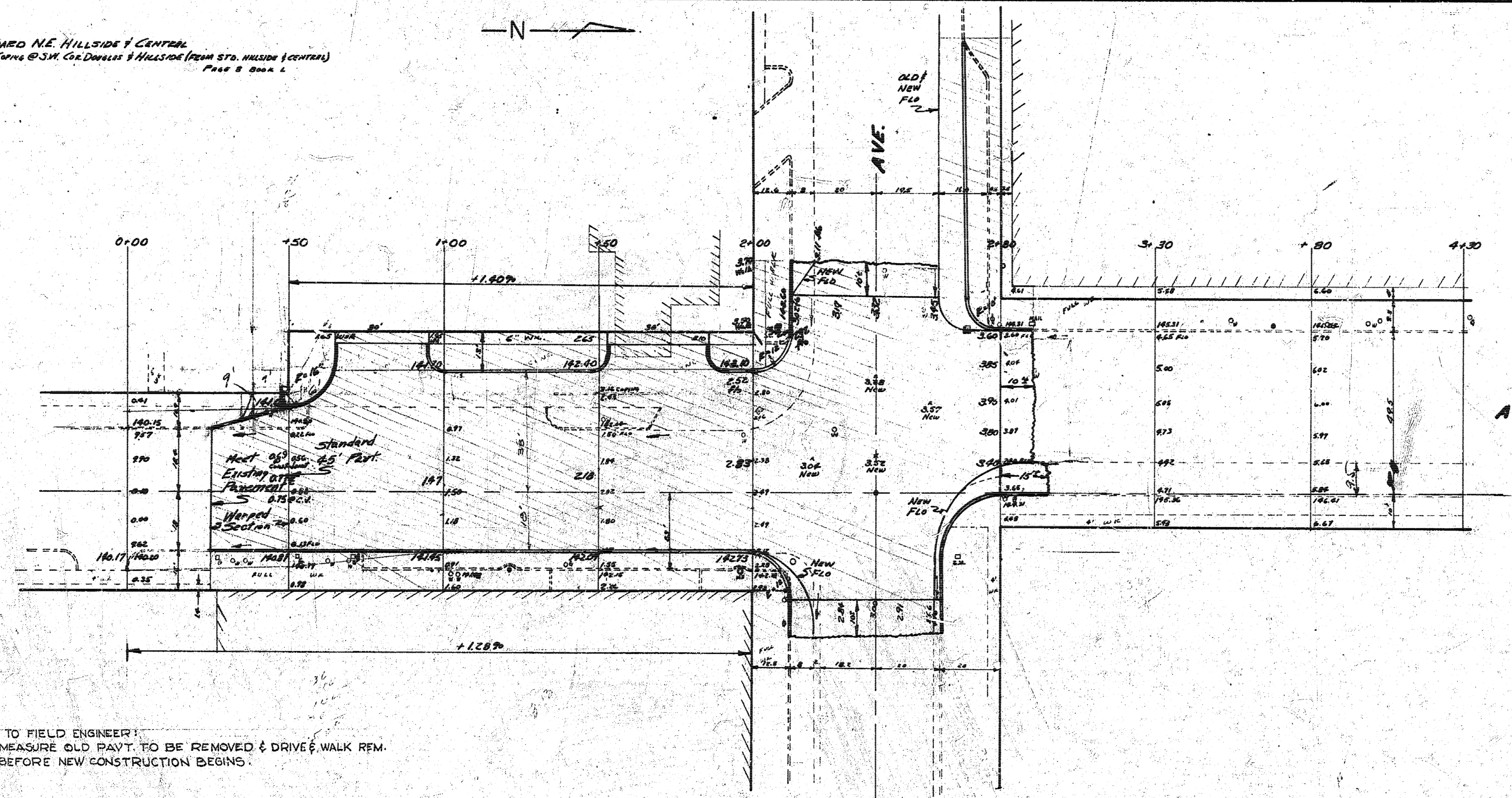
B.M. 14323 STANDARD N.E. HILLSIDE & CENTRAL  
 B.M. 12737 Top of Curve @ SW Cor. DOWNS & HILLSIDE (FROM STA. HILLSIDE & CENTRAL)  
 PAGE 2 OF 2



HILLSIDE

CENTRAL

AVE.



NOTE TO FIELD ENGINEER:  
 MEASURE OLD PAVT. TO BE REMOVED & DRIVE & WALK REM.  
 BEFORE NEW CONSTRUCTION BEGINS.



**HILLSIDE**  
 200'S. SL. CENTRAL TO NL. CENTRAL  
 44"-8" CONC. & CURB  
 CITY OF WICHITA KANSAS  
 B.E. SMITH CITY ENGINEER  
 MAY 1953 PROJ. NO. C13-96

1 0 5 0